



L E X I N G T O N  
I N T E R N A T I O N A L P L A Z A

N E W Y O R K , N Y

exclusively leased by

**BA** BRADFORD  
ALLEN



# EXCEPTIONAL VALUE IN THE PLAZA DISTRICT

Floor-to-ceiling windows offer abundant natural light and great views in every direction.

- Excellent location in the Plaza District
- Convenient accessibility, retail, and dining
- Prestigious lobby, attended 24/7
- Located directly above the East 59th Street subway station



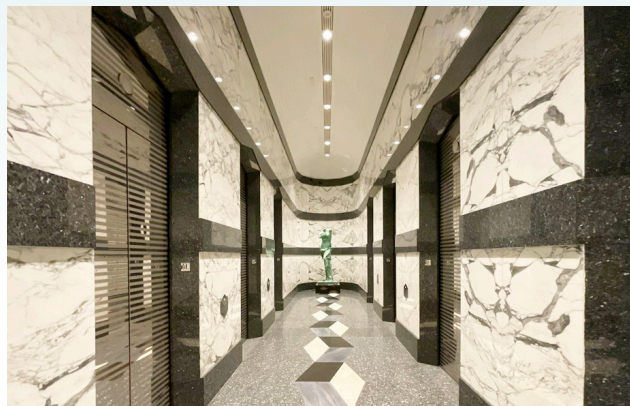
NEAR BLOOMBERG,  
CANTOR FITZGERALD,  
CITADEL, ESTEE LAUDER,  
& BLACKSTONE



CLOSE PROXIMITY TO  
4, 5, 6, N, R, W  
TRAINS

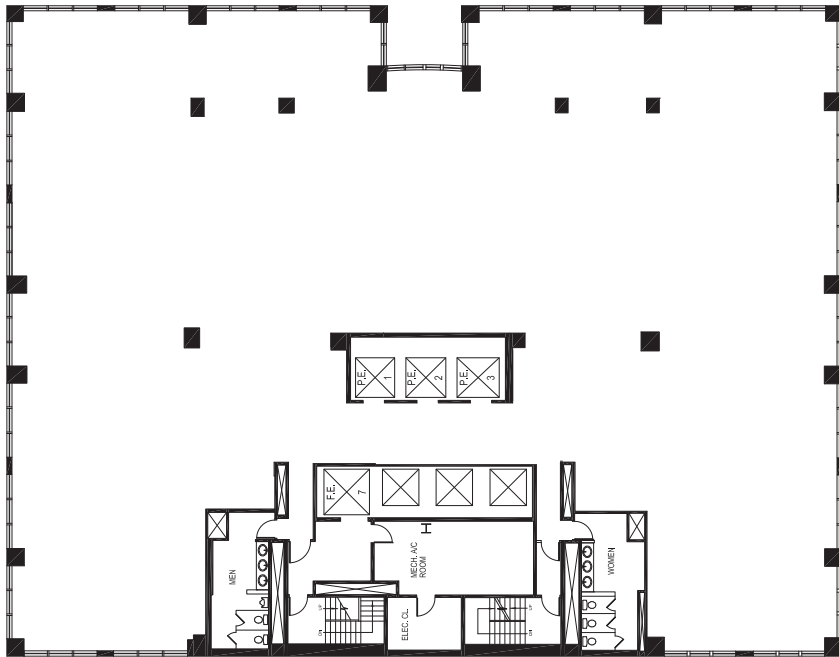


TENANT  
IMPROVEMENT  
**WORK AVAILABLE**



# AVAILABILITIES

FLOOR	SUITE	RSF	TERM	RATE	POSSESSION
Entire 15th	1500	6,307-12,283 <i>(divisible)</i>	5-10 Years	Upon Request	Immediate
Entire 11th	1100	13,500	5-10 Years	Upon Request	Immediate
Entire 10th	1000	18,246	7-10 Years	Upon Request	Immediate

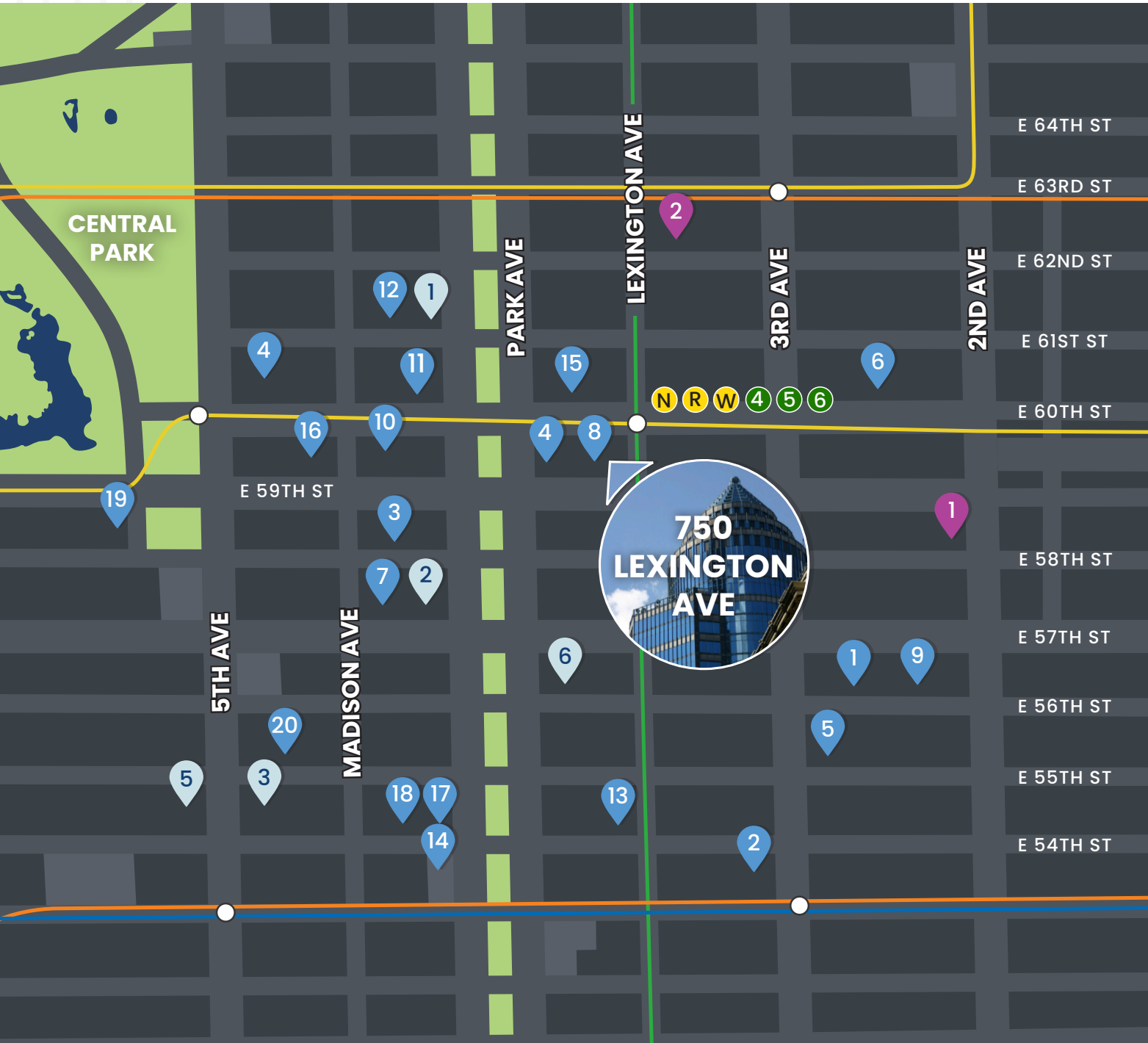


TYPICAL FLOOR PLAN  
(10TH FLOOR CORE & SHELL)



ENTIRE 10TH FLOOR  
(TEST FIT)

# NEIGHBORHOOD



## RESTAURANTS

1. Amata
2. Hillstone
3. LAVO
4. Piccola Cucina Uptown
5. PJ Clarke's
6. Serendipity
7. TAO
8. TBar
9. Whole Foods
10. Le Bilboquet
11. Il Mulino
12. Serafina
13. Bobby Van's
14. Casa Lever
15. The Bar Room
16. Avra Madison Estiatorio
17. Cellini
18. Nerai
19. Nobu
20. The Polo Bar



## HOTELS

1. Loews Regency
2. Four Seasons Hotel
3. The St. Regis
4. The Pierre
5. The Peninsula
6. The Lombardy



## GYMS

1. Crunch Fitness
2. Equinox (63rd)



LEXINGTON  
INTERNATIONAL PLAZA

FOR MORE INFORMATION OR TO ARRANGE A TOUR, PLEASE CONTACT:

**GLENN ISAACSON**

President, New York Region  
gisaacson@bradfordallen.com  
+1 212 593 7105

**TONY BUILDER**

Senior Associate, Realty Services  
tbuilder@bradfordallen.com  
+1 212 593 7106

exclusively leased by

**BA** BRADFORD  
ALLEN

© 2025 Bradford Allen Realty Services. All rights reserved. The information contained herein was obtained from sources deemed reliable; however, it has not been independently verified, and no warranties, express or implied, are made as to the accuracy thereof.

[bradfordallen.com](http://bradfordallen.com)