



C Town Plaza, Stratford, Ct Ground Lease 320 Boston Avenue



Located at Stratford-Bridgeport City Line

- Anchored by C Town Supermarket and Aaron's Appliance Store. Other businesses include Dunkin Donuts, Polish Deli, & phone store
- Potential drive-thru.
- Very Large Pole Signage and Ample Parking!
- Strong traffic count – Boston Post Rd (Rte. 1)

**\$85,000/yr NNN
ground lease**

Call Steve 203-260-1369 for more information

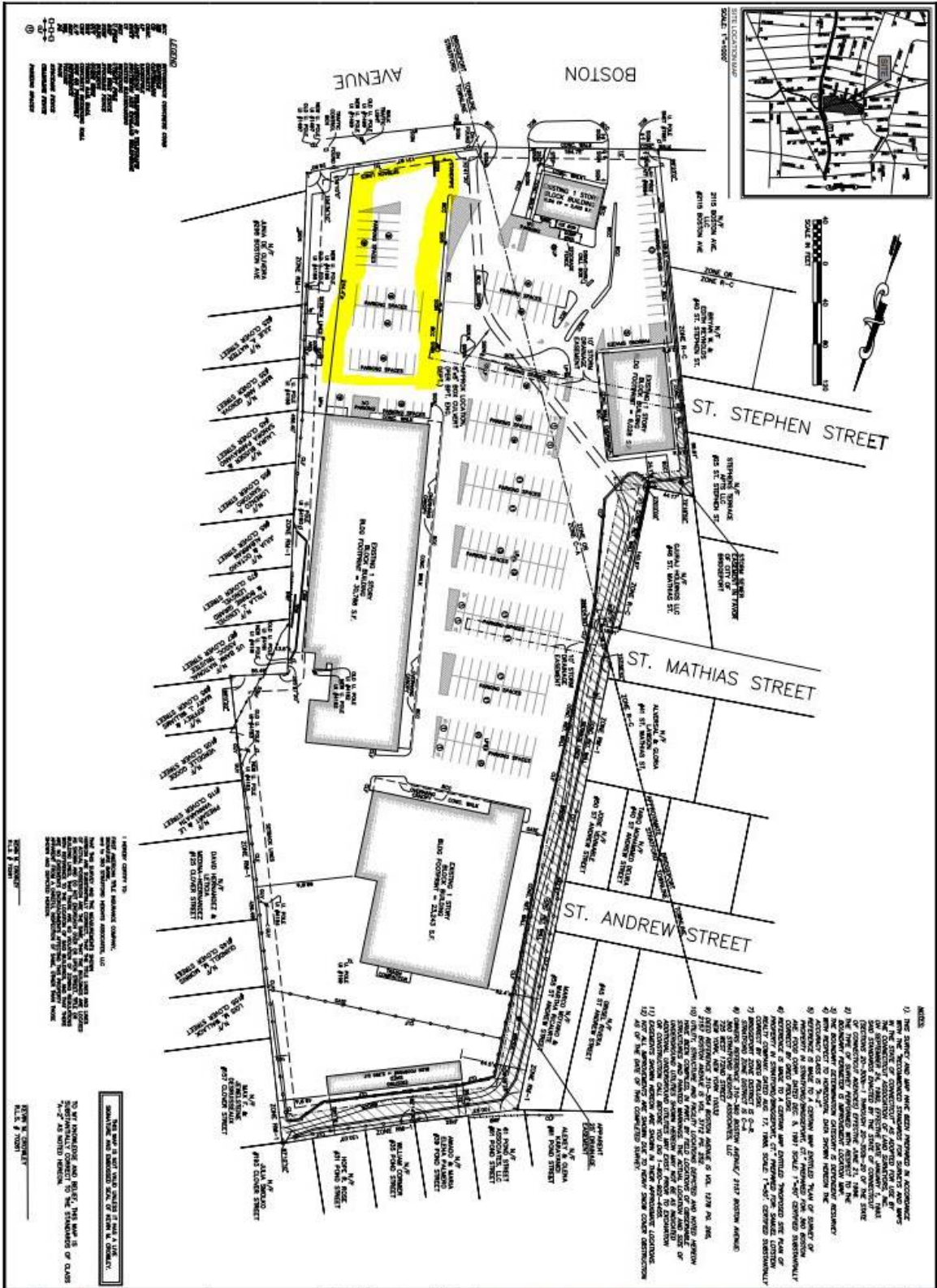
The information above has been obtained from sources believed reliable. While we do not doubt its accuracy we have not verified it and make no guarantee, warranty or representation about it.



Steve Hodson/Hodson Realty, Inc.
6515 Main St., Trumbull, Ct. 06611
Ph: 203-268-7743
Fax: 203-452-0920
Steve@HodsonRealty.com
www.HodsonCommercial.com

Integrity. Quality. Experience. Service.





LEGEND

1. PROPERTY BOUNDARIES
 2. EXISTING BUILDING FOOTPRINTS
 3. PROPOSED IMPROVEMENT LOCATION
 4. EASEMENTS
 5. SETBACKS
 6. UTILITY LINES
 7. STREETS
 8. ADJACENT PROPERTIES

NOTES

1. THE SURVEY AND MAP HAVE BEEN PREPARED IN ACCORDANCE WITH THE STANDARDS AND PRACTICES OF THE PROFESSION OF SURVEYING AS SET FORTH IN THE REGULATIONS OF THE BOARD OF SURVEYING AND MAPPING, STATE OF CONNECTICUT, AND THE STANDARDS AND PRACTICES OF THE PROFESSION OF SURVEYING AS SET FORTH IN THE REGULATIONS OF THE BOARD OF SURVEYING AND MAPPING, STATE OF CONNECTICUT.
2. THE SURVEY AND MAP HAVE BEEN PREPARED IN ACCORDANCE WITH THE STANDARDS AND PRACTICES OF THE PROFESSION OF SURVEYING AS SET FORTH IN THE REGULATIONS OF THE BOARD OF SURVEYING AND MAPPING, STATE OF CONNECTICUT, AND THE STANDARDS AND PRACTICES OF THE PROFESSION OF SURVEYING AS SET FORTH IN THE REGULATIONS OF THE BOARD OF SURVEYING AND MAPPING, STATE OF CONNECTICUT.
3. THE SURVEY AND MAP HAVE BEEN PREPARED IN ACCORDANCE WITH THE STANDARDS AND PRACTICES OF THE PROFESSION OF SURVEYING AS SET FORTH IN THE REGULATIONS OF THE BOARD OF SURVEYING AND MAPPING, STATE OF CONNECTICUT, AND THE STANDARDS AND PRACTICES OF THE PROFESSION OF SURVEYING AS SET FORTH IN THE REGULATIONS OF THE BOARD OF SURVEYING AND MAPPING, STATE OF CONNECTICUT.

DATE: 11/15/2011
SCALE: 1" = 100'
PROJECT NO.: 1111111111

Revisions	
No.	Description

IMPROVEMENT LOCATION PLAN
 OF PROPERTY LOCATED AT
360 BOSTON AVENUE
 BRIDGEPORT/STRATFORD, CT.
 PREPARED FOR:
360 STRATFORD HEIGHTS ASSOCIATES LLC

Copyright: 2011
 All rights reserved. No part of this publication may be reproduced, stored in a retrieval system, or transmitted, in any form or by any means, electronic, mechanical, photocopying, recording, or by any information storage and retrieval system, without the prior written permission of the publisher.