



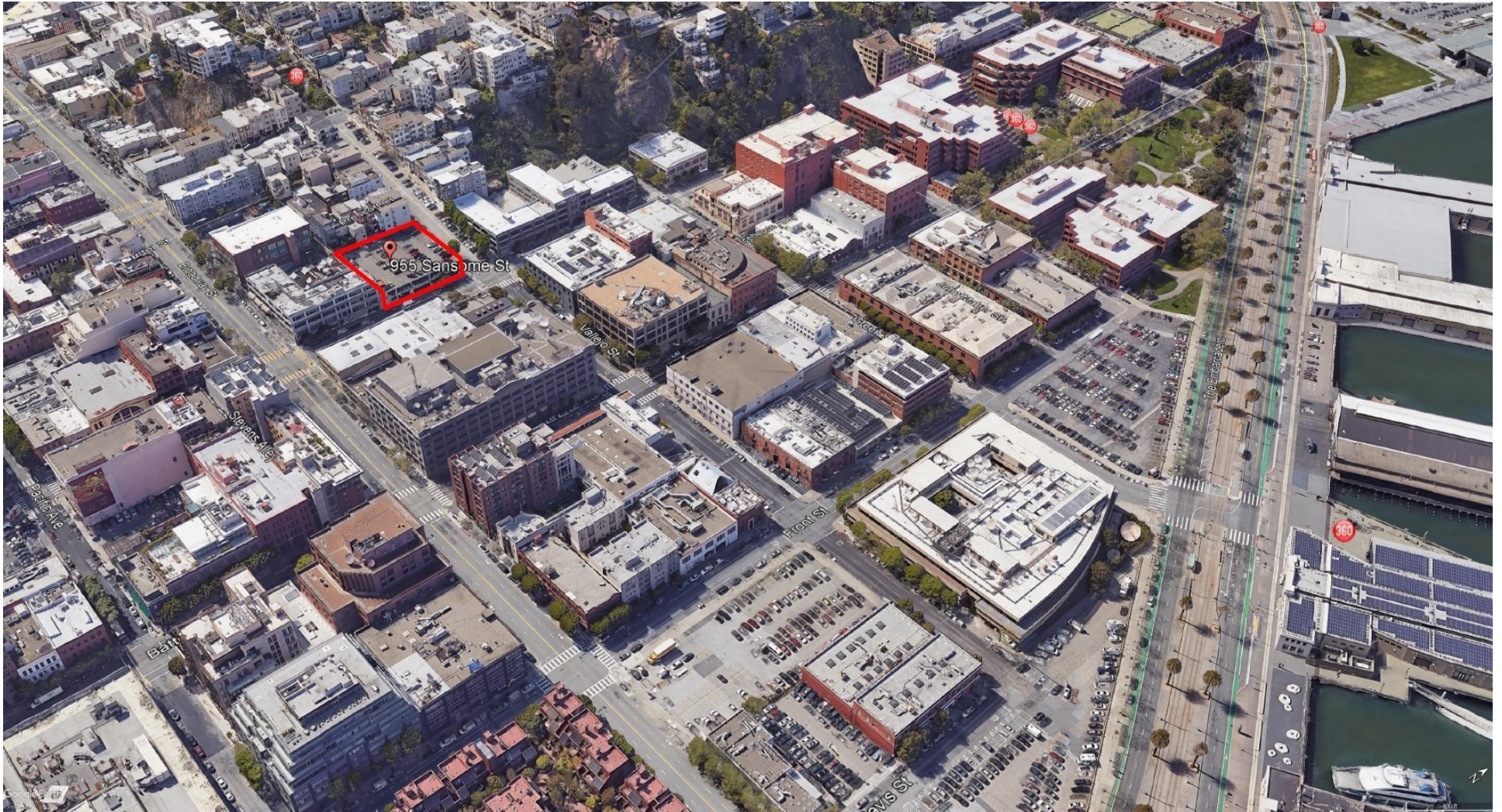
Overview — 955 Sansome, San Francisco

Parking Garage in San Francisco's Jackson Square/North Waterfront

[PREPARED BY]

David Noravian, Beckett Capital

Beckett



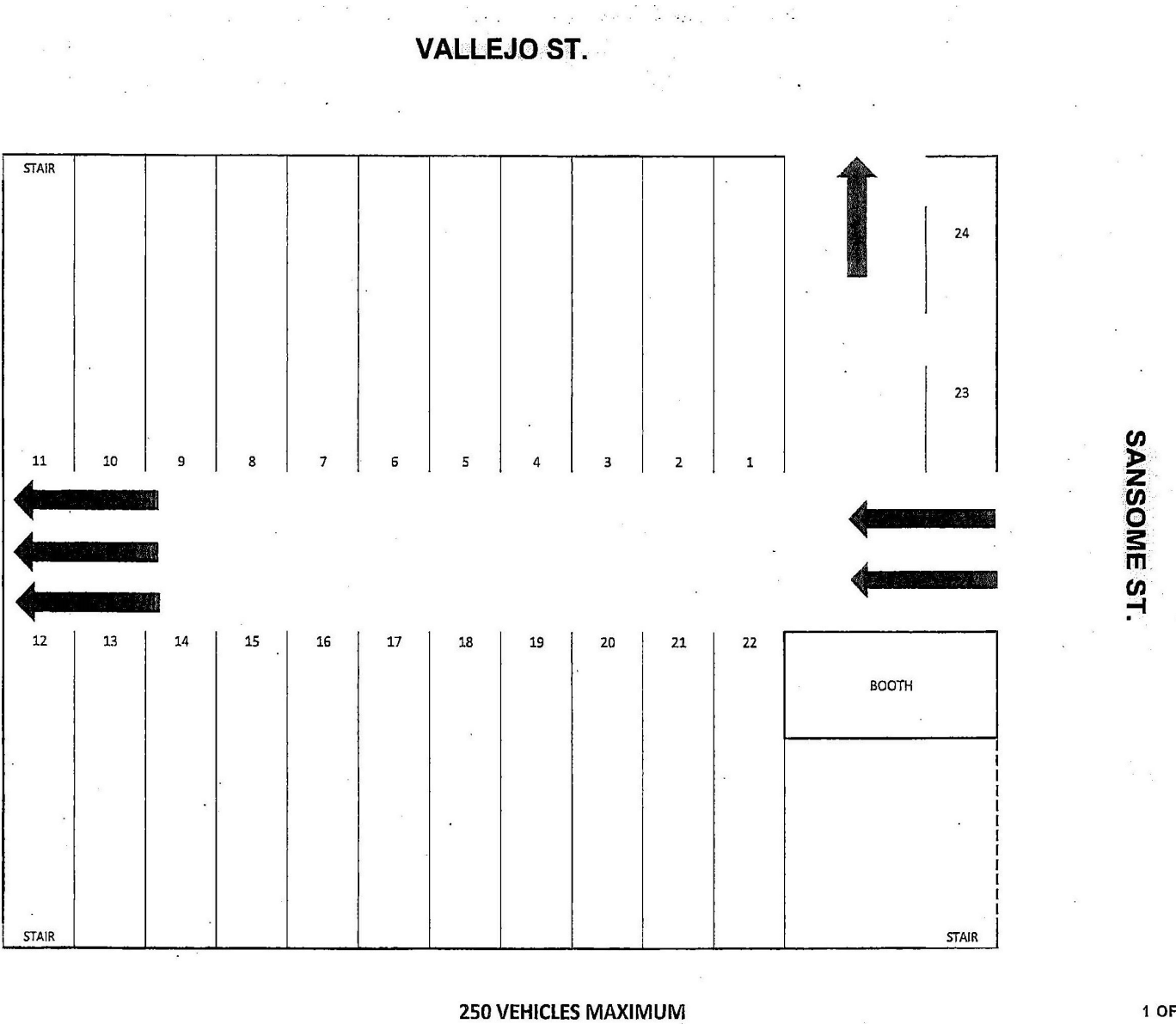
Disclaimer

The information contained herein has been obtained from sources deemed reliable but has not been verified and no guarantee, warranty or representation, either expressed or implied is made with respect to such information.

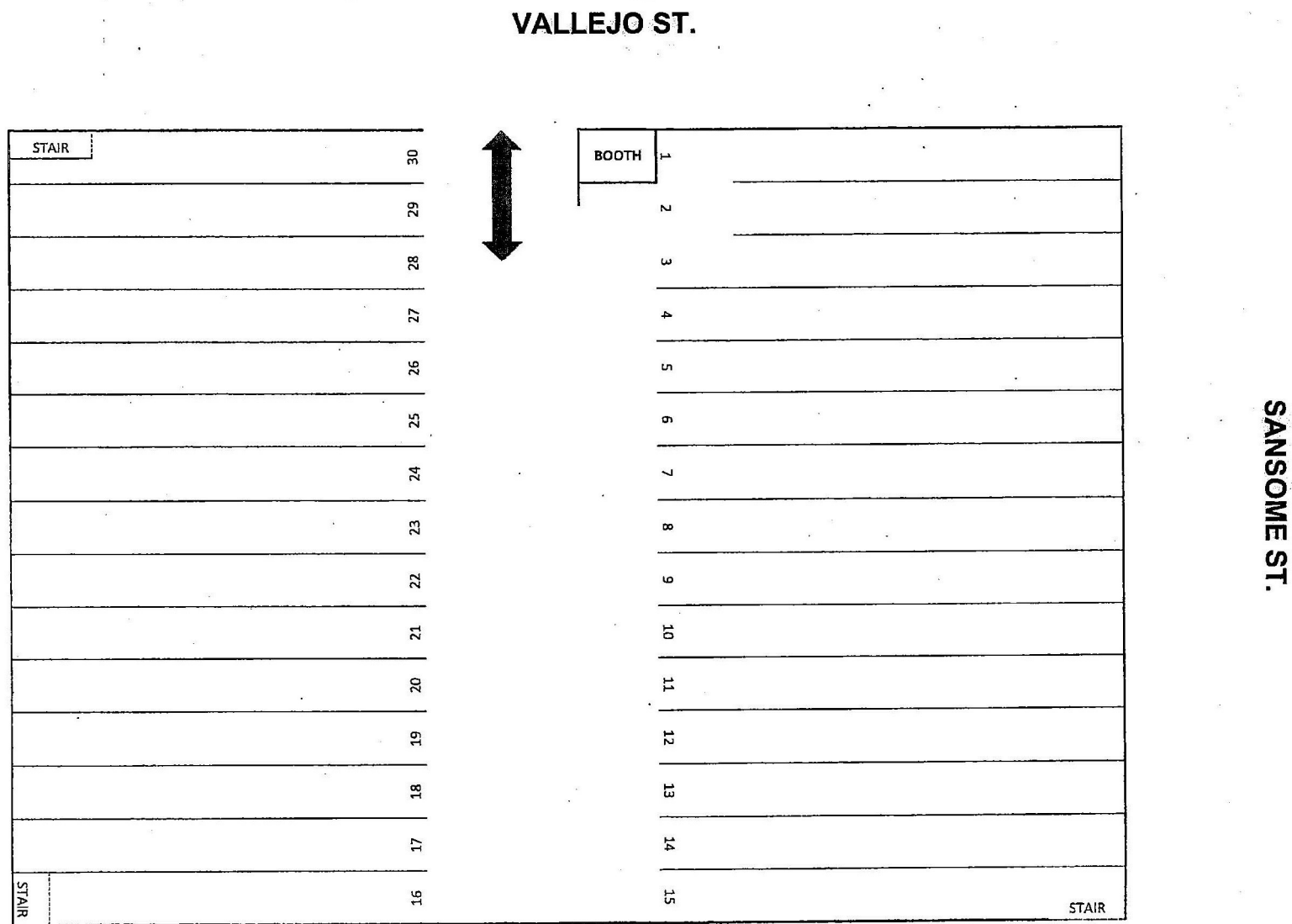
955 SANSOME — PROPERTY OVERVIEW

Address	955 Sansome Street
Cross Street	Vallejo Street
Building Area	52,180 sf (per public records)
Parcel Area	18,906 sf (per public records)
Capacity	Approximately 250 car capacity with valet 234 striped stalls as follows: Ground Floor: 75 stalls Second Floor: 89 stalls Roof Level: 70 stalls
Levels	Two above grade plus roof parking
Clear Height	Ground Floor: 11' 7" Second Floor: 9' 7"
Entrances	Two entrances on Sansome Street One entrance on Vallejo to ground floor One entrance on Vallejo to second floor One entrance on Vallejo to roof level
Year Built	1953
Construction Type	Poured-in-place concrete

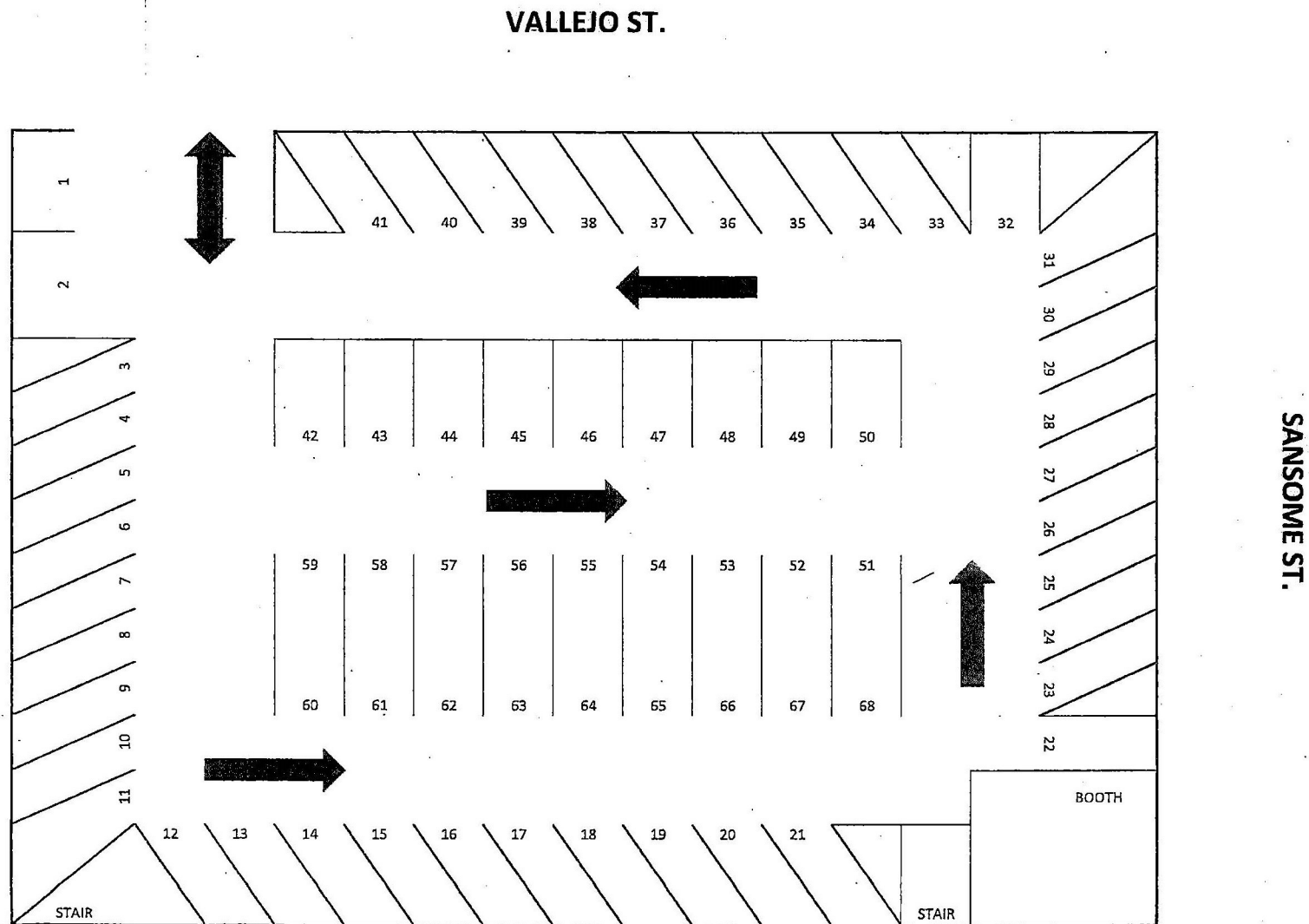
955 SANSOME — FLOOR PLANS | 1ST FLOOR



955 SANSOME — FLOOR PLANS | 2ND FLOOR

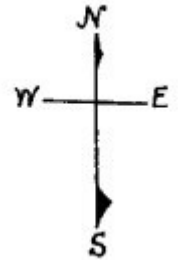
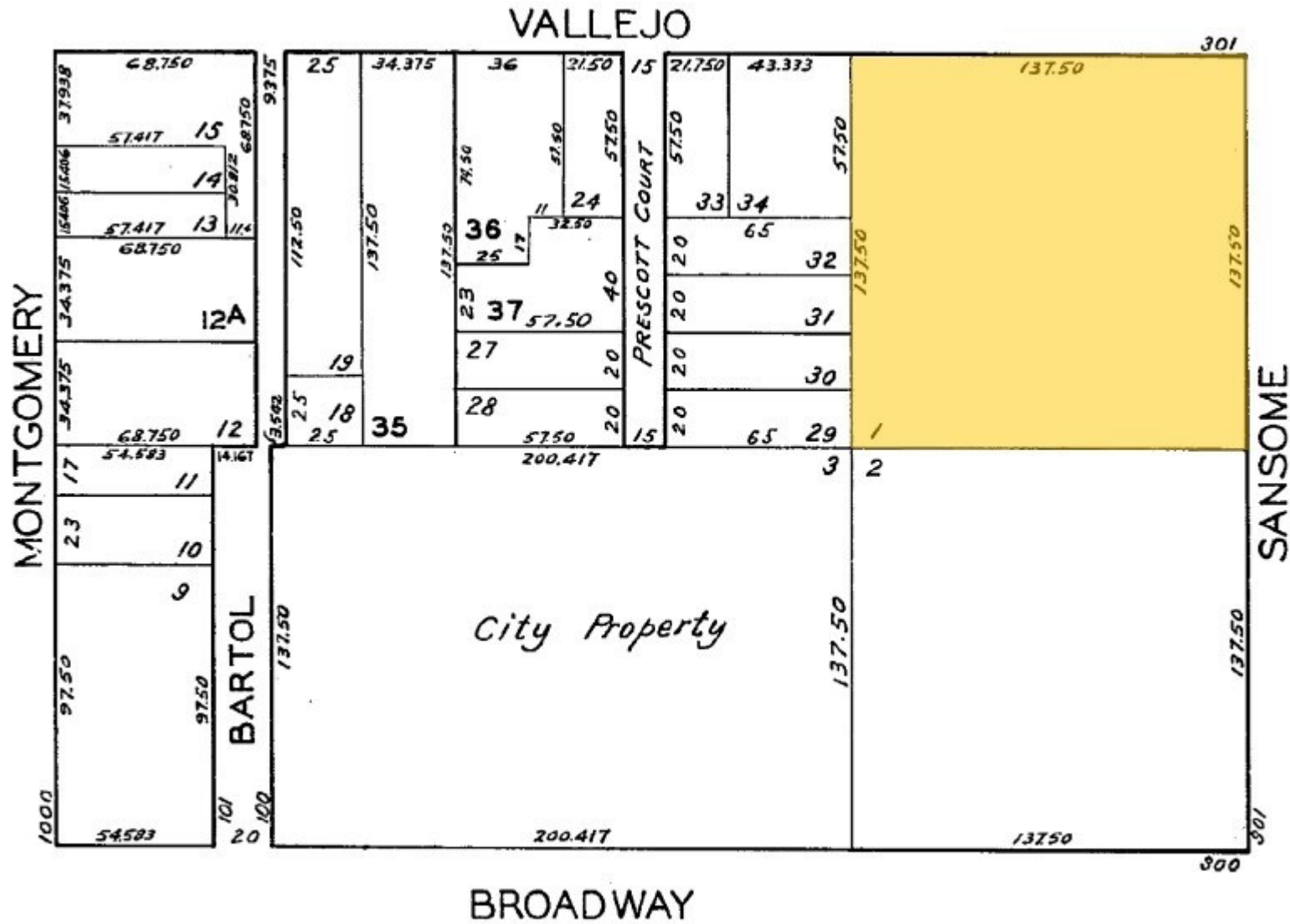


955 SANSOME — FLOOR PLANS | 3RD FLOOR (ROOF LEVEL)



3 OF 3

955 SANSOME — PARCEL MAP



An aerial photograph of San Francisco, California, showing the city's dense urban landscape, the San Francisco Bay, and the Golden Gate Bridge in the distance. The city's skyline is prominent, with numerous skyscrapers and buildings. The bay is a deep blue, and the bridge is a white suspension bridge. The surrounding hills are visible in the background.

Beckett

For more information, please contact:

Beckett Capital Inc | David Noravian

Lic. 01419471

+1 415 627 8364

david@beckettcapital.com