

# FOR LEASE

## 10,335 SF INDUSTRIAL WAREHOUSE / SHOWROOM

275 AIRPORT PULLING ROAD N, NAPLES, FL 34104



**AVAILABLE IMMEDIATELY!**

- **SIZE:** 10,335 SF
- **RATE:** \$24.00 / SF NNN
- **CAM:** \$6.29 / SF

### PROPERTY FEATURES

- 15.5' Warehouse Clear Height
- 13' Showroom Clear Height
- Two Drive-In Doors (16' x 12')
- Truckwell with Dock Leveler & Awning
- Situated on 1.11 Acres
- Zoned C-5 (Heavy Commercial)  
*click [here](#) for uses*



Please Contact:

**Jerry Messonnier, SIOR**  
Principal

**239.210.7610**   
jmessonnier@lee-associates.com

**Frank Martone**  
Vice President

**239.210.7605**   
fmartone@lee-associates.com

All information furnished regarding property for sale, rental or financing is from sources deemed reliable, but no warranty or representation is made to the accuracy thereof and same is subject to errors, omissions, change of price, or other conditions prior to sale, lease or financing or withdrawal without notice. No liability of any kind is to be imposed on the broker herein.

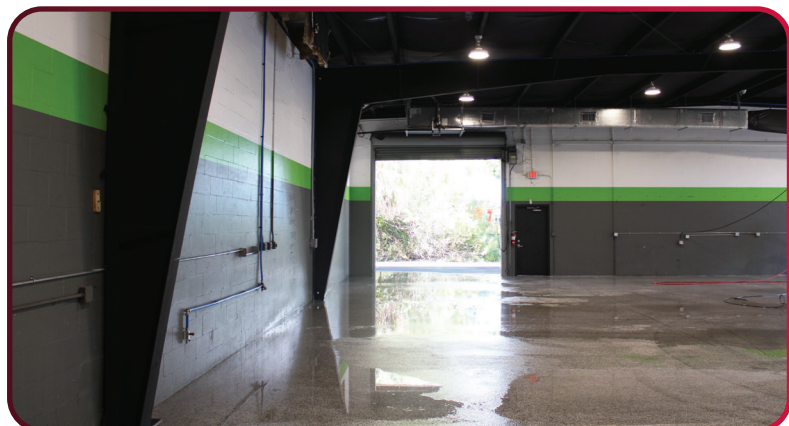


**FOR LEASE**

**10,335 SF INDUSTRIAL WAREHOUSE / SHOWROOM**

275 AIRPORT PULLING ROAD N, NAPLES, FL 34104

**LEE & ASSOCIATES**  
COMMERCIAL REAL ESTATE SERVICES



YOUR LOCAL MARKET **EXPERT**

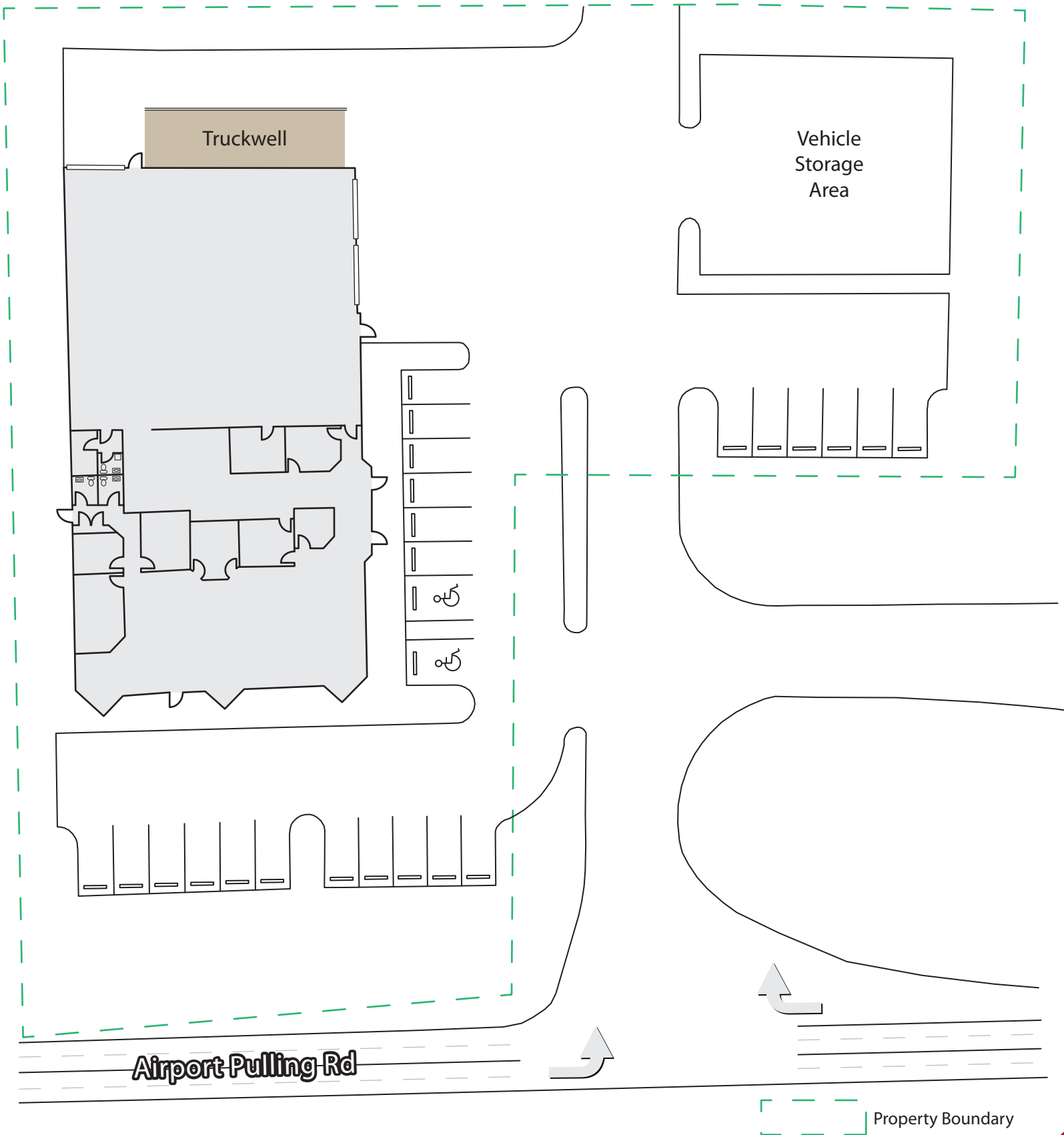
9979 Gulf Logistics Drive, Suite 210 | Fort Myers, Florida 33913 | Lee-FL.com



# FOR LEASE

10,335 SF INDUSTRIAL WAREHOUSE / SHOWROOM

275 AIRPORT PULLING ROAD N, NAPLES, FL 34104



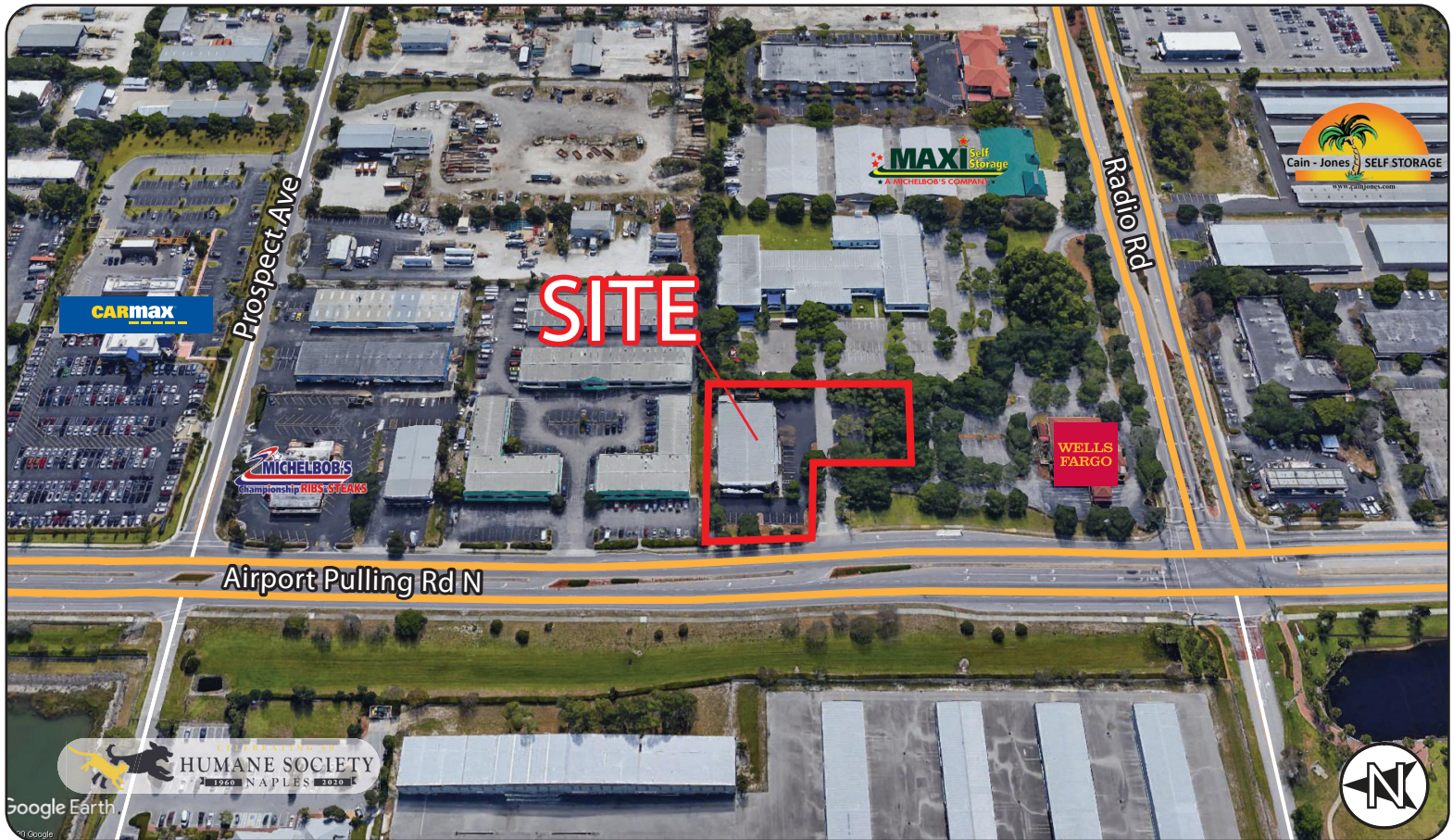


# FOR LEASE

## 10,335 SF INDUSTRIAL WAREHOUSE / SHOWROOM

275 AIRPORT PULLING ROAD N, NAPLES, FL 34104

**LEE & ASSOCIATES**  
COMMERCIAL REAL ESTATE SERVICES



Two Drive-In Doors (16' x 12')

Truckwell with Leveler & Awning

YOUR LOCAL MARKET **EXPERT**  
9979 Gulf Logistics Drive, Suite 210 | Fort Myers, Florida 33913 | Lee-FL.com

X @ in f