

LAYDOWN FOR LEASE

34544
HIGHWAY 30

GEISMAR, LOUISIANA

TALON

CBRE

PROPERTY OVERVIEW

HIGHLIGHTS

- ±24 Acres of Stabilized Yard Available for Lease, All or Part
- Proximity to a Variety of Major Petrochemical Facilities Along the Mississippi River
- Well Positioned to Serve as Staging Area or Off-Site Yard for Local Industrial Service Providers
- Zoned Light Industrial
- Owner Agent(s)

3 – 24

ACREAGE

\$2,900 / ACRE / MONTH

LEASE RATE

FENCED & GATED

SECURITY

AUG 1, 2025

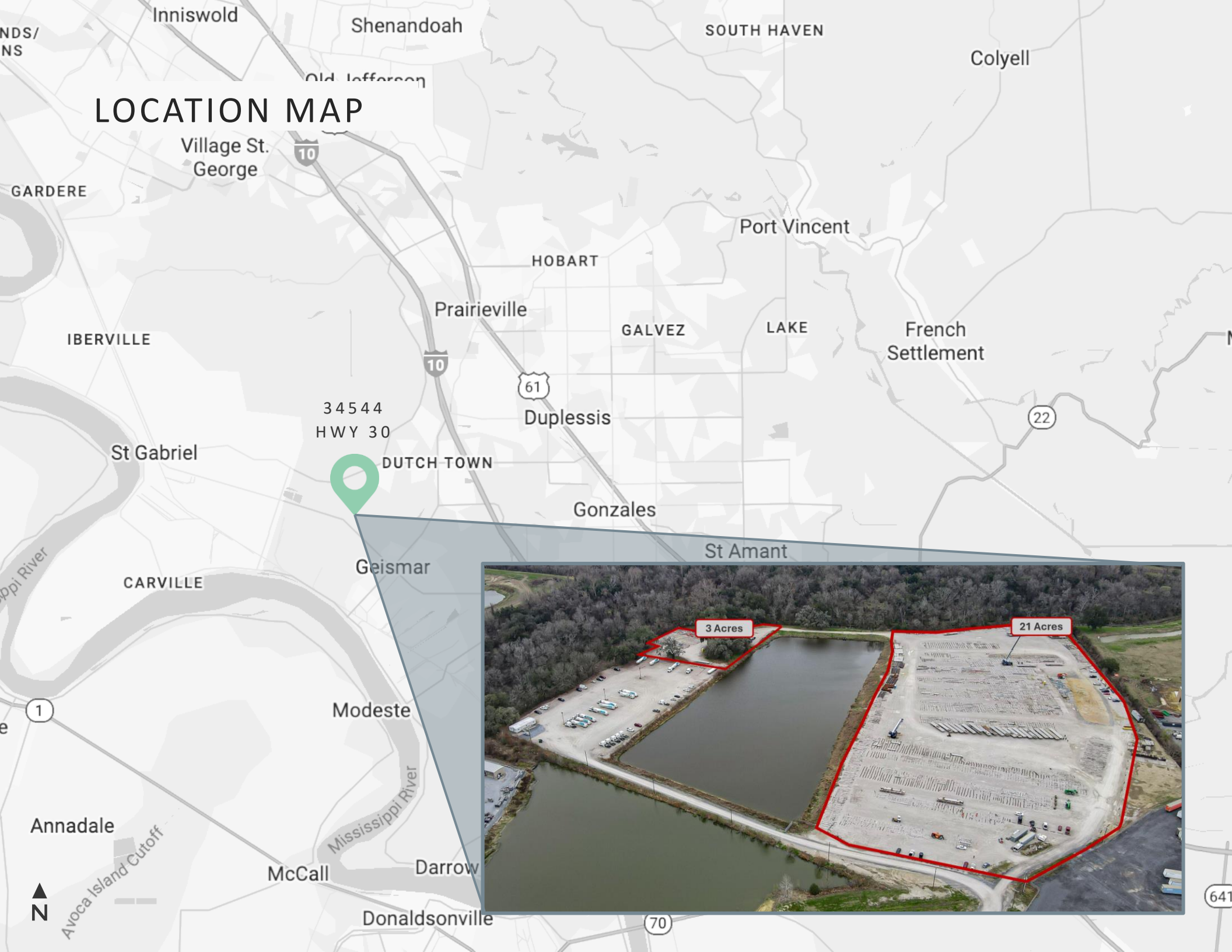
AVAILABLE



SITE AERIAL



LOCATION MAP

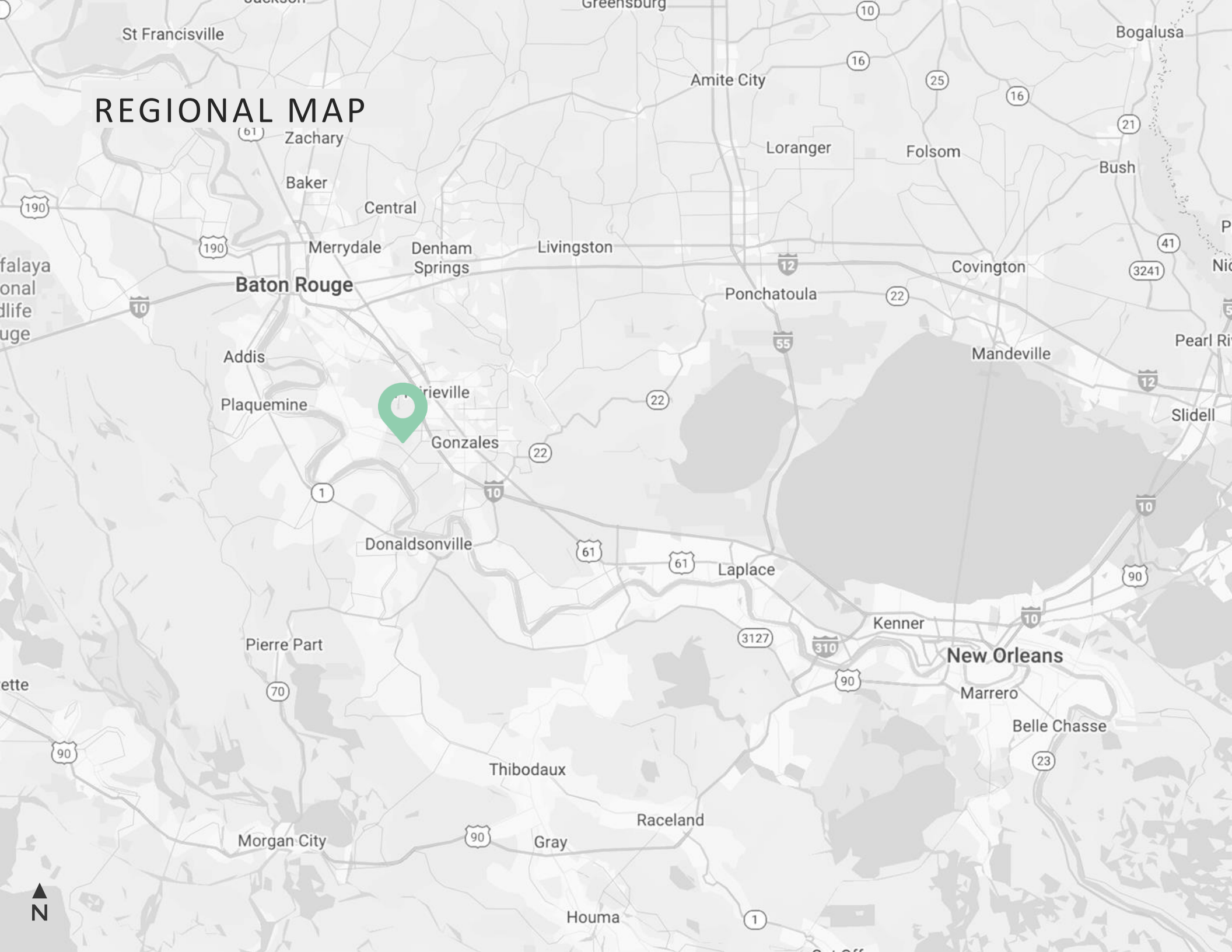


34544
HWY 30

DUTCH TOWN



REGIONAL MAP





3 4 5 4 4 H I G H W A Y 3 0

3 - 24 ACRES
LAYDOWN FOR LEASE

GEISMAR, LOUISIANA

MICHAEL CASHIO, SIOR, CCIM
Senior Vice President

+1 225 247 9812
michael.cashio@cbre.com

ALEX MCCOLLAM
Associate

+1 832 584 9162
alex.mccollam@cbre.com



© 2025 CBRE, Inc. All rights reserved. This information has been obtained from sources believed reliable but has not been verified for accuracy or completeness. CBRE, Inc. makes no guarantee, representation or warranty and accepts no responsibility or liability as to the accuracy, completeness, or reliability of the information contained herein. You should conduct a careful, independent investigation of the property and verify all information. Any reliance on this information is solely at your own risk. CBRE and the CBRE logo are service marks of CBRE, Inc. All other marks displayed on this document are the property of their respective owners, and the use of such marks does not imply any affiliation with or endorsement of CBRE. Photos herein are the property of their respective owners. Use of these images without the express written consent of the owner is prohibited.