



# 5,010 SF AVAILABLE FOR SUBLEASE



23 Fontana Lane, Rosedale, MD 21237  
Suite 107

JLL INDUSTRIAL

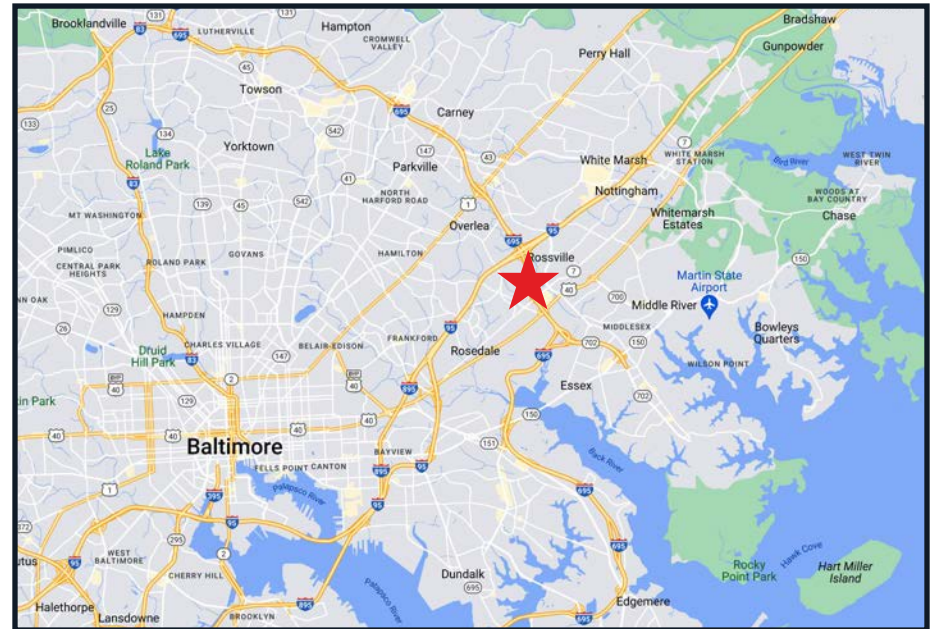
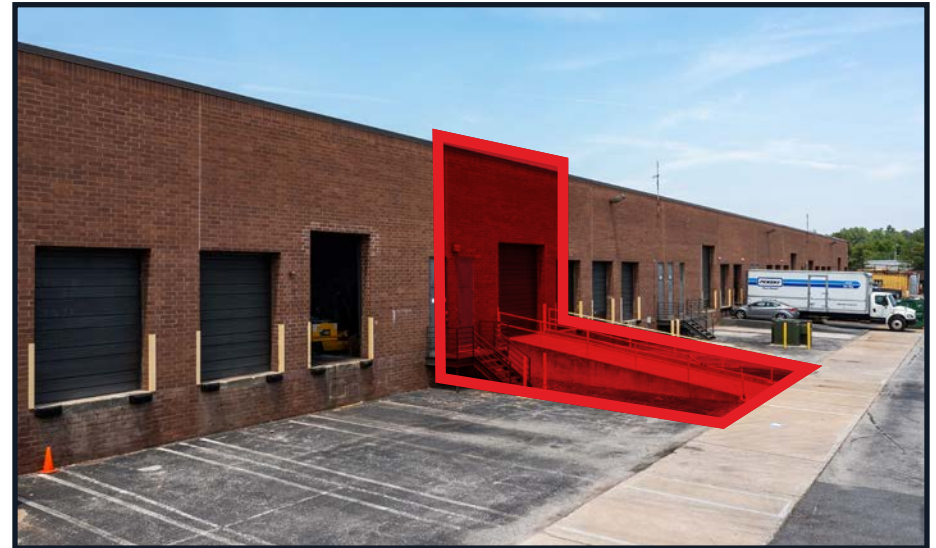
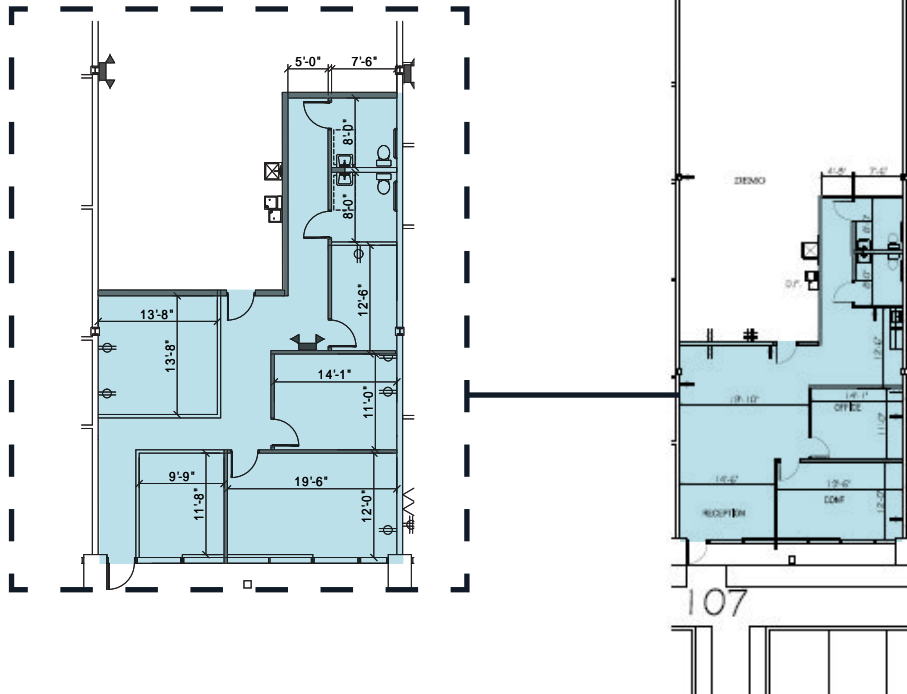
GREG FERRARO

443 451 2618

GREG.FERRARO@JLL.COM

# PROPERTY SPECS

- 5,010 SF
- LEASE EXP 2/28/26
- BASE RENT OF \$10.50/SF



23 Fontana Lane, Rosedale, MD 21237  
Suite 107



**FOR MORE LEASING INFORMATION, PLEASE CONTACT:**

**GREG FERRARO**

**443 451 2618**

**[GREG.FERRARO@JLL.COM](mailto:GREG.FERRARO@JLL.COM)**

Although information has been obtained from sources deemed reliable, JLL does not make any guarantees, warranties or representations, express or implied, as to the completeness or accuracy as to the information contained herein. Any projections, opinions, assumptions or estimates used are for example only. There may be differences between projected and actual results, and those differences may be material. JLL does not accept any liability for any loss or damage suffered by any party resulting from reliance on this information. If the recipient of this information has signed a confidentiality agreement with JLL regarding this matter, this information is subject to the terms of that agreement.  
©2024. Jones Lang LaSalle IP, Inc. All rights reserved.