

Industrial Space | For Lease

1500 Industrial Blvd, Jacksonville, Florida 32254

CBRE



32,134 SF Available Immediately

+ **Suite 1500:** 22,252 SF

+ **Suite 1526:** 9,881 SF

OPEX: \$2.22/ SF

Asking Rate: Please Inquire

For More Information, Please Contact:

Kyle Fisher

First Vice President

+1 864 540 5926

kyle.fisher@cbre.com

Kyle Murphy

Associate

+1 845 416 3890

kyle.murphy@cbre.com

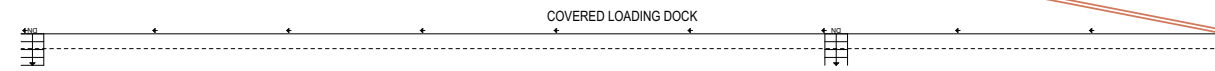
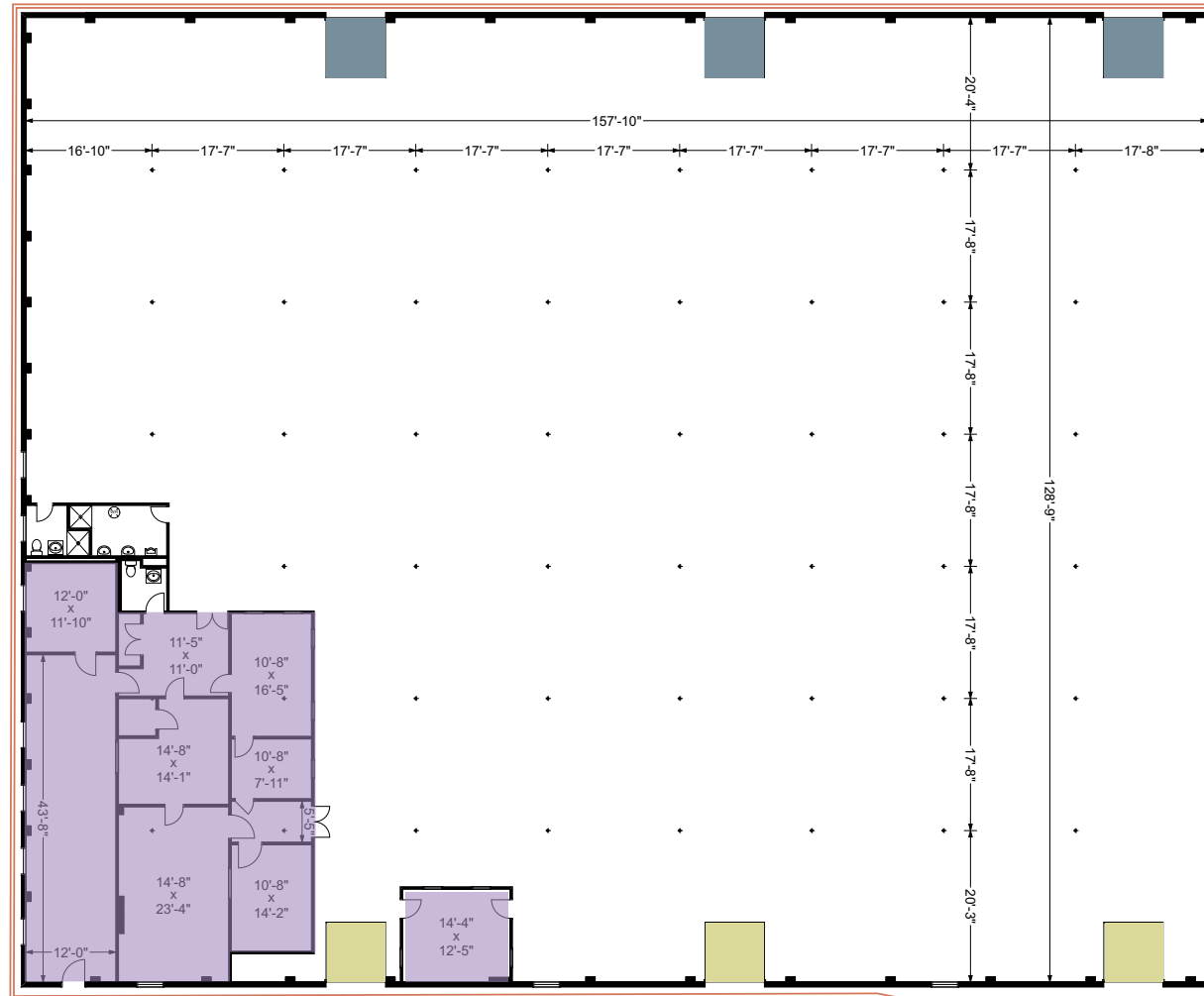
Industrial Space | For Lease

1500 Industrial Blvd, Jacksonville, Florida 32254

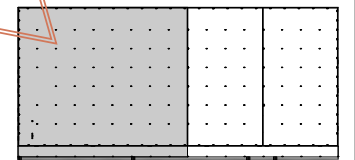


Suite 1500: 22,252 SF Available

Premises Size	22,252 SF
Office Space	±1,500 SF
Dock Doors	3 Dock High Doors
Rail Door	3
Load Configuration	Front Load
Zoning	Light Industrial (IL)
Clear Height	15'
Warehouse Lighting	LED
Fire Suppression	Wet Pipe
Truck Court	130'
Auto Parking	1/2,000 SF



- Rail Doors
- Dock High Doors
- Office Space



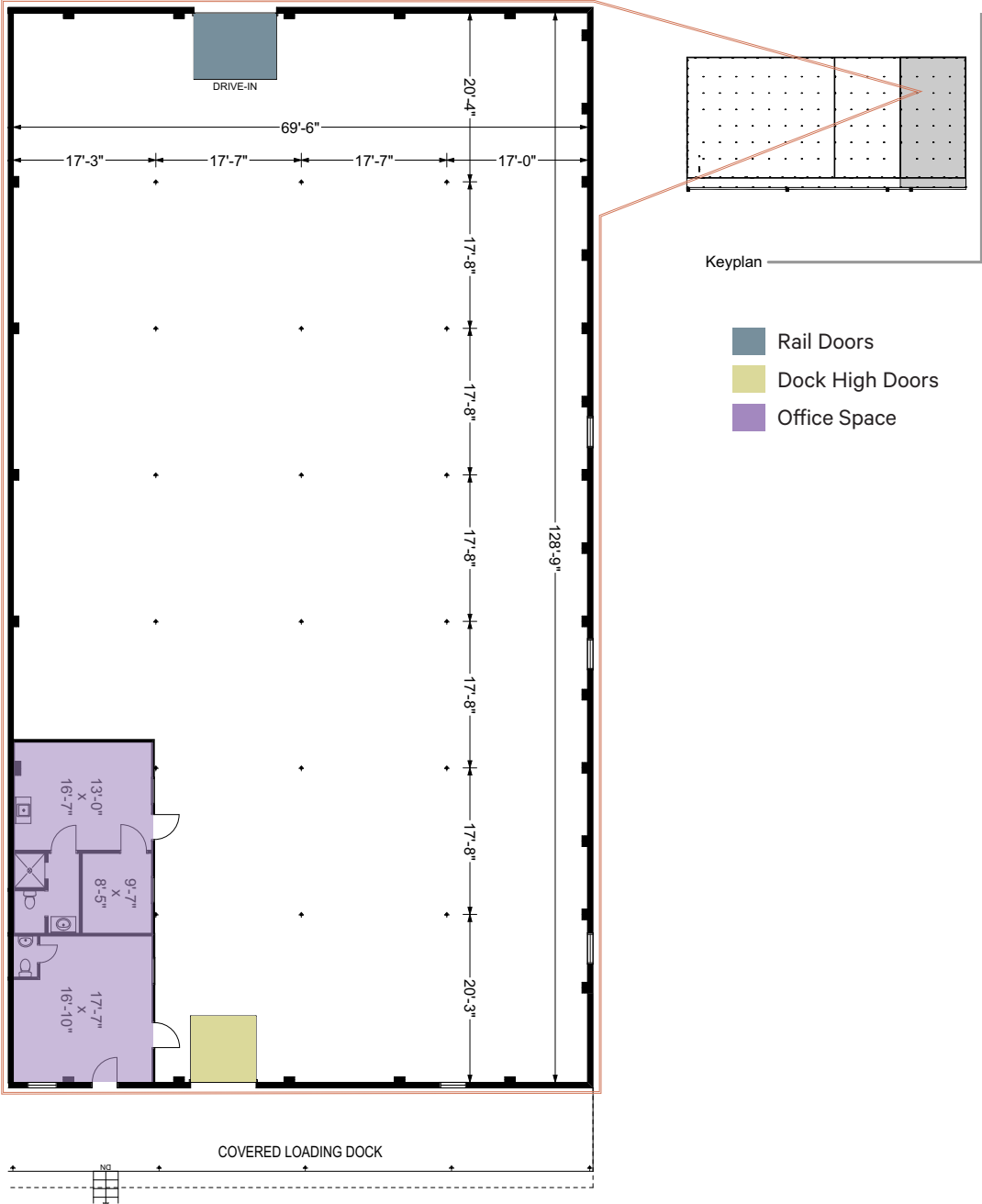
Keyplan

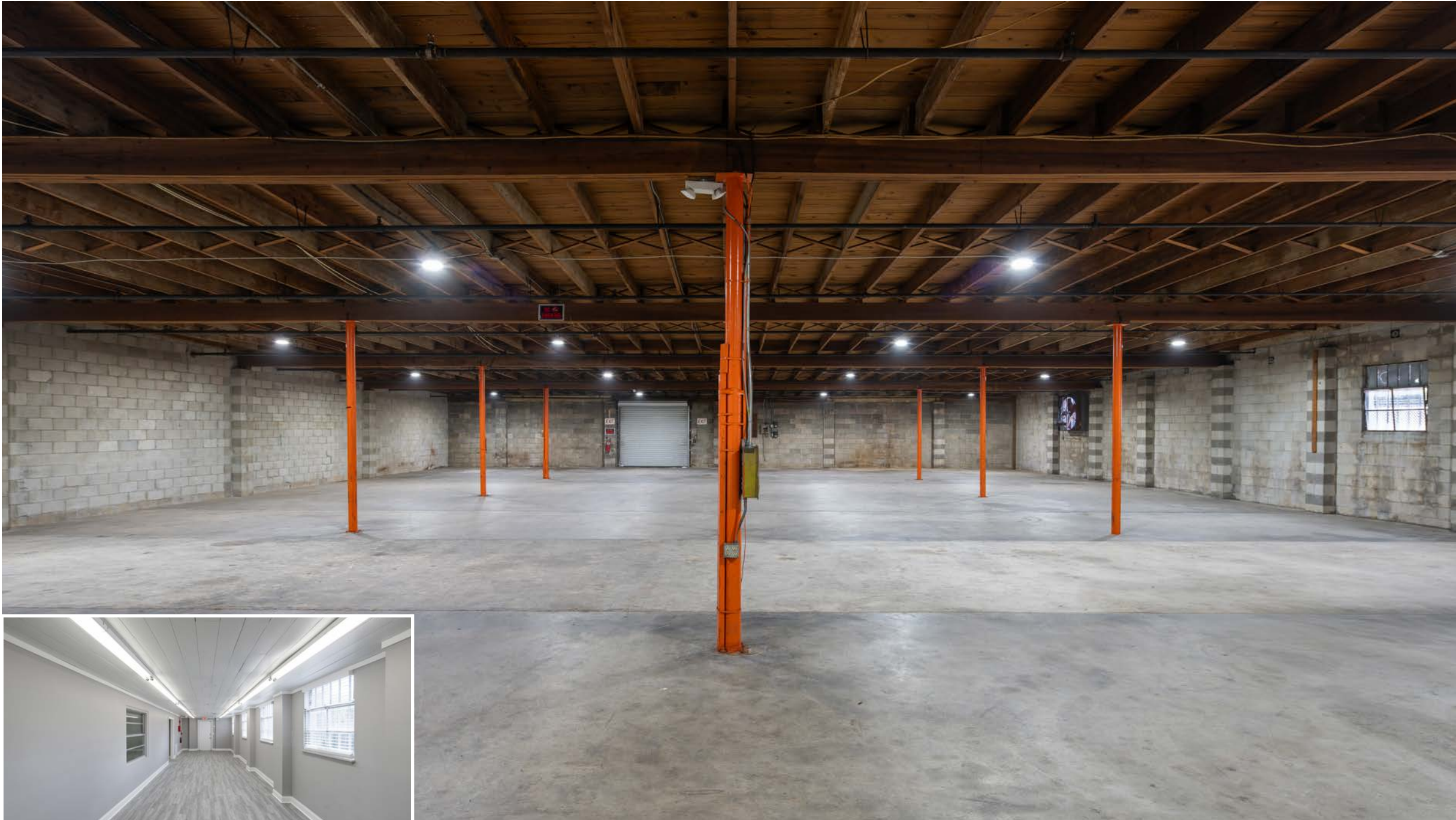


Interior Office

Suite 1526: 9,881 SF Available

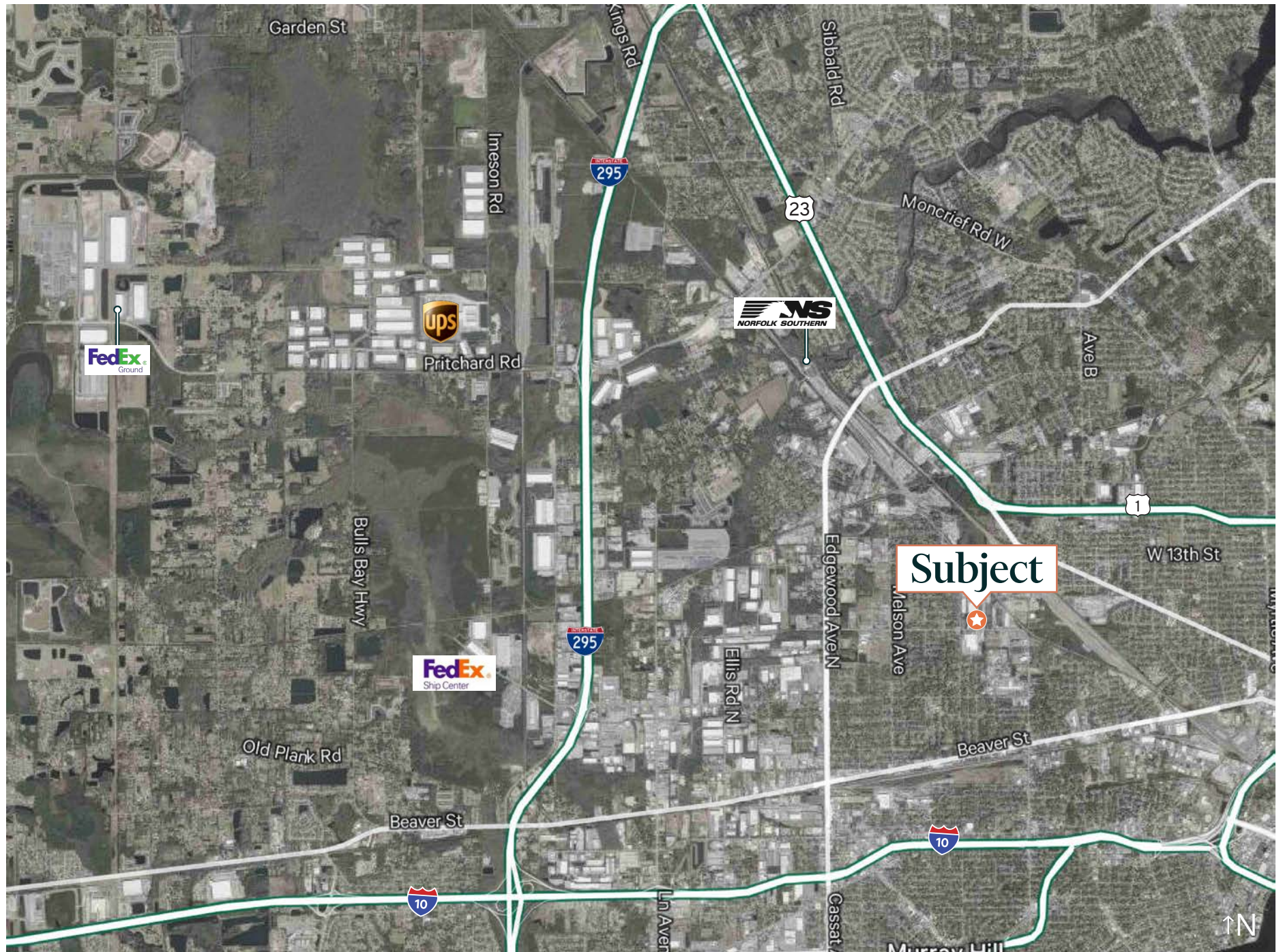
Premises Size	9,881 SF
Office Space	600 SF
Dock Doors	1 Dock High
Load Configuration	Front
Rail Door	1
Zoning	IL
Clear Height	15'
Warehouse Lighting	LED
Fire Suppression	Wet Pipe
Truck Court	130'
Auto Parking	1/2,000 SF

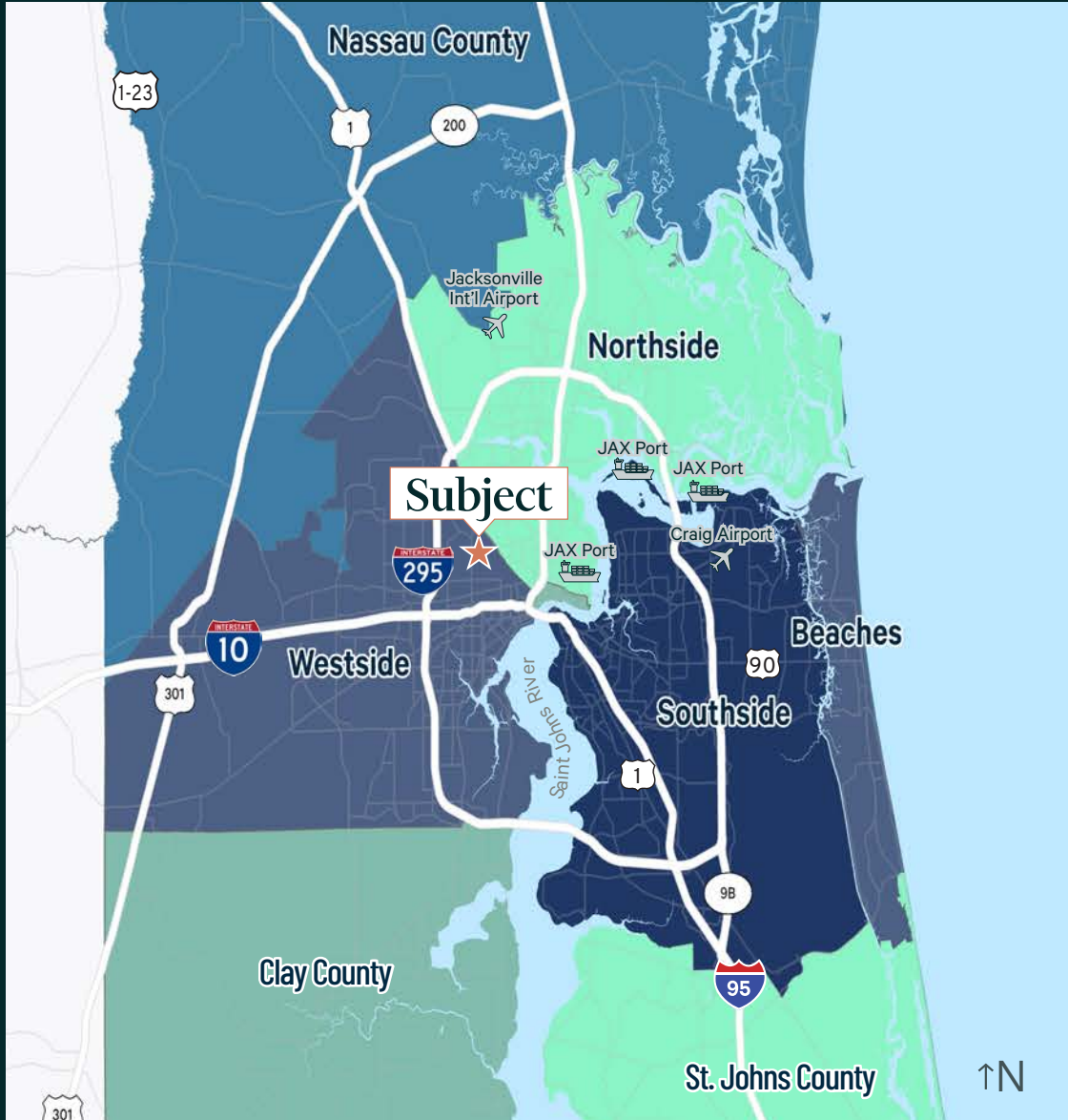




Interior Office

1500 Industrial Blvd, Jacksonville, Florida





Points of Interest	Distance
Interstate 295	1 mile
US-1	1.1 miles
Interstate 95	2.5 miles
US-10	3.1 miles
CSX Intermodal Facility	5.1 miles
Norfolk Southern Intermodal Facility	5.2 miles
JAXPORT Talleyrand	9.6 miles
FEC Intermodal Facility	12.2 miles
Jacksonville Int'l Airport	15.8 miles
JAXPORT Dames Point	22.7 miles
JAXPORT Blount Island	22.7 miles
Port of Savannah	145 miles
Port of Tampa	196 miles
Port of Charleston	244 miles

For More Information, Please Contact:

Kyle Fisher

First Vice President

+1 864 540 5926

kyle.fisher@cbre.com

Kyle Murphy

Associate

+1 845 416 3890

kyle.murphy@cbre.com