





OFFICE FOR SUBLEASE

- ±6,476 SF Two -Story Office Space
- 1 Large Conference Room
- 12 Private Offices
- 4 Restrooms
- Freeway Visible
- West Corona Location
- Immediate Access to  &  Freeway



GARRET GILLILAND
Vice President
714.267.0051
GGilliland@voitco.com
Lic#02075196

RYAN MOORE
Senior Vice President | Partner
909.545.8011
RMoore@voitco.com
Lic#01821438

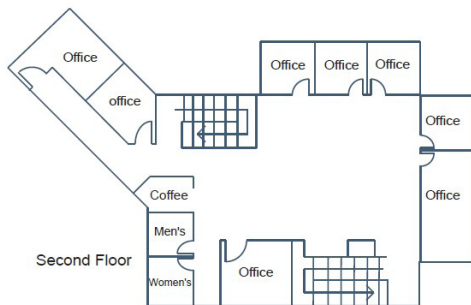
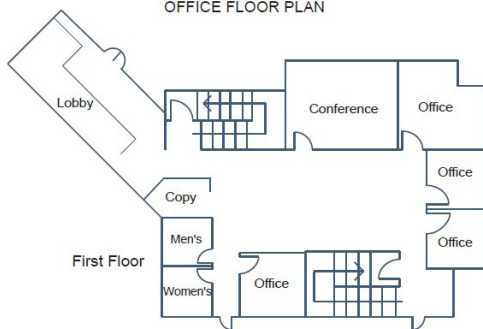
Voit
REAL ESTATE SERVICES

OFFICE FOR SUBLEASE - ±6,476 SF

2755 WARDLOW ROAD, CORONA, CA



OFFICE FLOOR PLAN



GARRET GILLILAND

Vice President

714.267.0051

GGilliland@voitco.com

Lic#02075196

RYAN MOORE

Senior Vice President | Partner

909.545.8011

RMoore@voitco.com

Lic#01821438

Voit

REAL ESTATE SERVICES