

High Quality Office/Warehouse Space in Northeast Fresno, CA
 Industrial For Lease | 2695 N Fowler Ave #106 Fresno, CA 93727



**CENTRAL CA
 COMMERCIAL**



Lease Rate	\$0.85 SF/MONTH (NNN)
------------	--------------------------------------

OFFERING SUMMARY

Building Size:	29,759 SF
NNN's:	\$0.15/SF
Available SF:	9,000 SF
Lot Size:	2.32 Acres
Year Built:	2006
Zoning:	IL: Light Industrial
Market:	Fresno
Submarket:	Northeast Fresno
Cross Streets:	Fowler & Princeton Ave
APN:	496-193-02

PROPERTY HIGHLIGHTS

- ±9,000 SF of Clear-Space Industrial Space Near Airport
- ±2,700 SF Office Space & ±6,300 SF Open Warehouse Space
- (5) Private Offices, Large Reception, Bull Pen Area, & Conference
- 14' Clear Height | Heavy Duty Reinforced Concrete Construction
- Parking On All Sides Of The Building on ±3.23 Acres
- (2) 12' x 12' Ground Level Roll Up Doors | Flexible Industrial Zoning
- Building Equipped With HVAC In Office | ESFR Sprinklers | LED Lighting
- 200 Amps, 120/280, 3-Phase Power | Semi Access Available
- Multiple Access Points | Gated Private Parking Lot
- Close Proximity to Fresno Yosemite International Airport
- Huge Daytime Population Base (± within 3 Miles)
- Separately Metered | Prime Alternative to New Construction
- Convenient Location w/ Access to CA-180, CA-41, & CA-168
- Located Within Minutes From Corporate Neighbors

Jared Ennis
 Executive Vice President
 CalDRE #01945284
 jared@centralcacommercial.com
 559.705.1000

Kevin Land
 Executive Managing Director
 CalDRE #01516541
 kevin@centralcacommercial.com
 559.705.1000

Central CA Commercial
 Investments | Industrial | Office
 Multifamily | Retail | Land | Specialty
CentralCaCommercial.com

We obtained the information above from sources we believe to be reliable. However, we have not verified its accuracy and make no guarantee, warranty or representation about it. It is submitted subject to the possibility of errors, omissions, change of price, rental or other conditions, prior sale, lease or financing, or withdrawal without notice. We include projections, opinions, assumptions or estimates for example only, and they may not represent current or future performance of the property. You and your tax and legal advisors should conduct your own investigation of the property and transaction.

High Quality Office/Warehouse Space in Northeast Fresno, CA
Industrial For Lease | 2695 N Fowler Ave #106 Fresno, CA 93727



**CENTRAL CA
COMMERCIAL**

PROPERTY DESCRIPTION

±9,000 SF of office/warehouse located in Northeast Fresno, CA just 2 miles from Fresno Yosemite International Airport. Move-in ready space that includes an open warehouse, private office space, & private restrooms. Suite #106 of ±9,000 SF consists of ±2,700 SF of office space & ±6,300 SF of warehouse. The private office area features (5) private offices, a large reception, large bull pen area, & conference room. This fully insulated building features metal roof, two roll up doors in the warehouse, 14' clear height clear-span warehouse, 120/280 3-phase power 200 amps separately metered, LED lighting throughout & fire sprinklers. The complex offers ample parking; ratio exceeds 4 stalls per 1,000 SF. Just east of the airport with nearby CA-180 access via Fowler Ave leading to CA-99, CA-41, and I-5. Flexible industrial zoning allows for many uses allowed in this centrally located Industrial area. Thrifty and expedient alternative to new construction by avoiding a lengthy construction time delay, land acquisition/fees, and high construction costs.

LOCATION DESCRIPTION

Property is located near CA HWY-180 and Fowler Ave creating convenient access to HWY-168 & HWY-41 interchanges. Located on the Southwest corner of N Fowler Ave and E Princeton Ave. Subject property is located North of E Clinton Ave, South of N Shields Ave, East of N Clovis Ave & West of N Armstrong Ave. National surrounding tenants include McDonald's, Starbucks, Jack In The Box, Taco Bell, Vons, Panda Express, Arsenios, Little Caesars, Mountain Mikes, Subway, Dollar Tree, Wing Stop, & many others.

Fresno is a major city in the San Joaquin Valley of California, United States. It is the county seat of Fresno County and the largest city in the greater Central Valley region. It covers about 115 square miles and had a population of 542,107 as of the 2020 Census, making it the fifth-most populous city in California, the most populous inland city in California, and the 33rd-most populous city in the nation.



Jared Ennis

Executive Vice President

CalDRE #01945284

jared@centralcacommercial.com

559.705.1000

Kevin Land

Executive Managing Director

CalDRE #01516541

kevin@centralcacommercial.com

559.705.1000

Central CA Commercial
*Investments | Industrial | Office
Multifamily | Retail | Land | Specialty*

CentralCaCommercial.com

We obtained the information above from sources we believe to be reliable. However, we have not verified its accuracy and make no guarantee, warranty or representation about it. It is submitted subject to the possibility of errors, omissions, change of price, rental or other conditions, prior sale, lease or financing, or withdrawal without notice. We include projections, opinions, assumptions or estimates for example only, and they may not represent current or future performance of the property. You and your tax and legal advisors should conduct your own investigation of the property and transaction.

High Quality Office/Warehouse Space in Northeast Fresno, CA
Industrial For Lease | 2695 N Fowler Ave #106 Fresno, CA 93727



**CENTRAL CA
COMMERCIAL**



AVAILABLE SPACES

SUITE	TENANT	SIZE (SF)	LEASE TYPE	LEASE RATE
#106	Available	9,000 SF	NNN's: \$0.15/SF	\$0.85 SF/month

Jared Ennis
Executive Vice President

CalDRE #01945284
jared@centralcommercial.com
559.705.1000

Kevin Land
Executive Managing Director

CalDRE #01516541
kevin@centralcommercial.com
559.705.1000

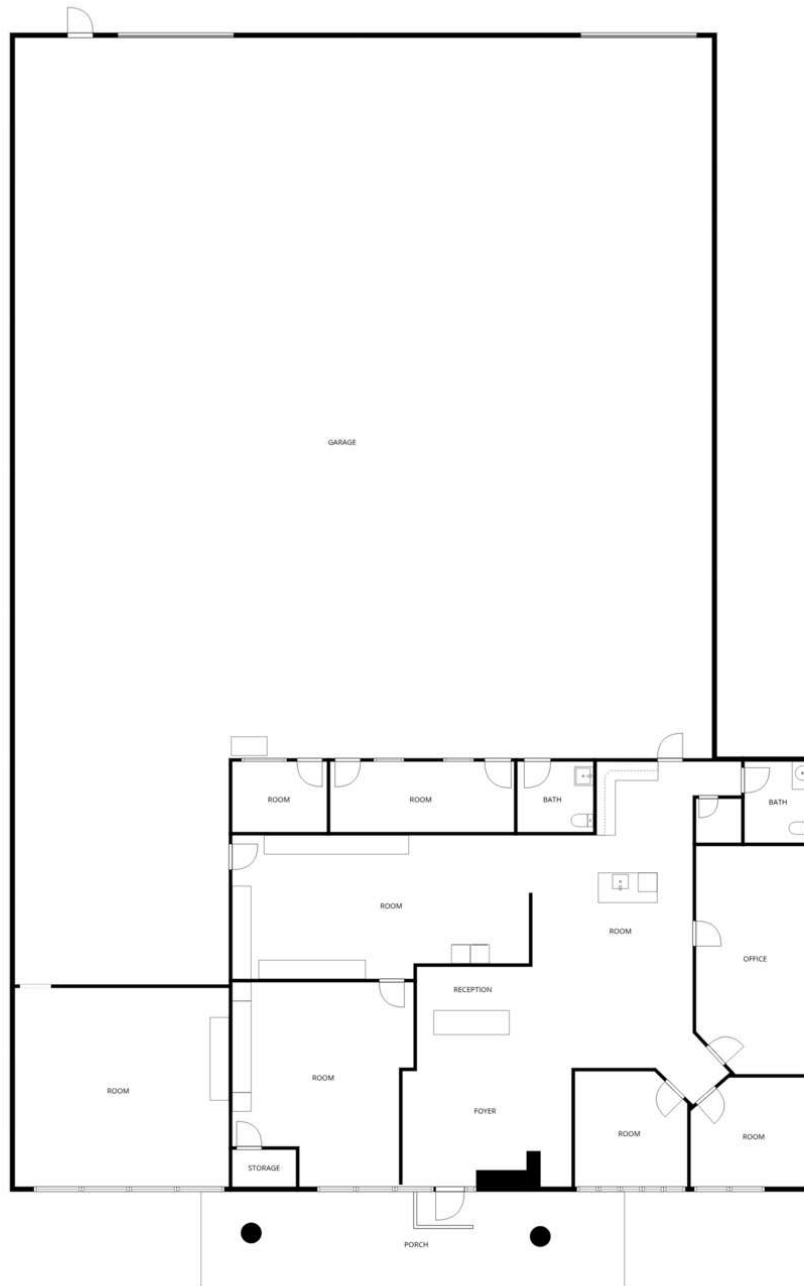
Central CA Commercial
Investments | Industrial | Office
Multifamily | Retail | Land | Specialty
CentralCaCommercial.com

We obtained the information above from sources we believe to be reliable. However, we have not verified its accuracy and make no guarantee, warranty or representation about it. It is submitted subject to the possibility of errors, omissions, change of price, rental or other conditions, prior sale, lease or financing, or withdrawal without notice. We include projections, opinions, assumptions or estimates for example only, and they may not represent current or future performance of the property. You and your tax and legal advisors should conduct your own investigation of the property and transaction.

High Quality Office/Warehouse Space in Northeast Fresno, CA
Industrial For Lease | 2695 N Fowler Ave #106 Fresno, CA 93727



**CENTRAL CA
COMMERCIAL**



MEASUREMENTS DEEMED HIGHLY RELIABLE BUT NOT GUARANTEED.

Jared Ennis
Executive Vice President

CalDRE #01945284

jared@centralcacommercial.com

559.705.1000

Kevin Land
Executive Managing Director

CalDRE #01516541

kevin@centralcacommercial.com

559.705.1000

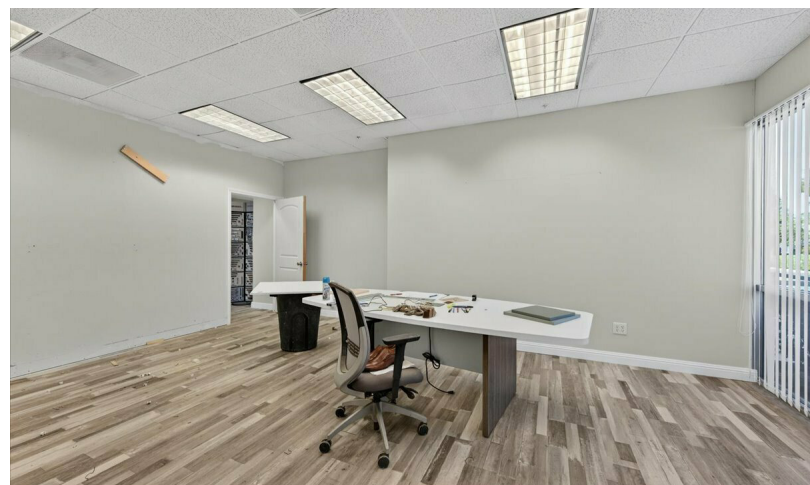
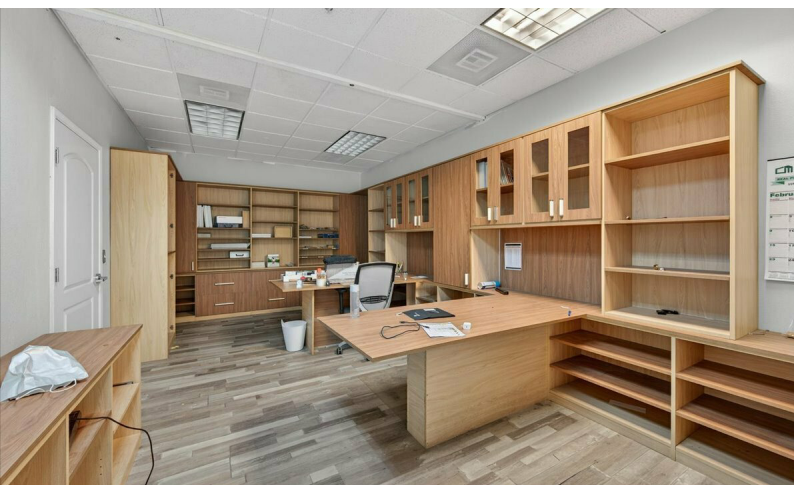
Central CA Commercial
Investments | Industrial | Office
Multifamily | Retail | Land | Specialty
CentralCaCommercial.com

We obtained the information above from sources we believe to be reliable. However, we have not verified its accuracy and make no guarantee, warranty or representation about it. It is submitted subject to the possibility of errors, omissions, change of price, rental or other conditions, prior sale, lease or financing, or withdrawal without notice. We include projections, opinions, assumptions or estimates for example only, and they may not represent current or future performance of the property. You and your tax and legal advisors should conduct your own investigation of the property and transaction.

High Quality Office/Warehouse Space in Northeast Fresno, CA
Industrial For Lease | 2695 N Fowler Ave #106 Fresno, CA 93727



**CENTRAL CA
COMMERCIAL**



Jared Ennis
Executive Vice President
CalDRE #01945284
jared@centralcacommercial.com
559.705.1000

Kevin Land
Executive Managing Director
CalDRE #01516541
kevin@centralcacommercial.com
559.705.1000

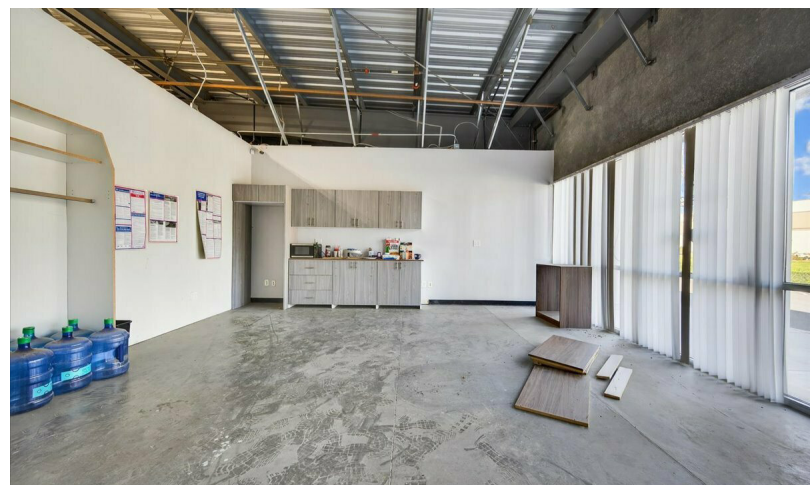
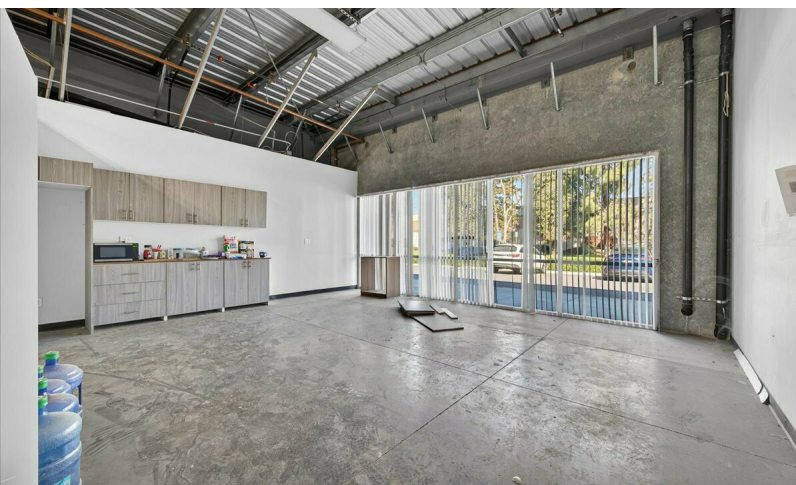
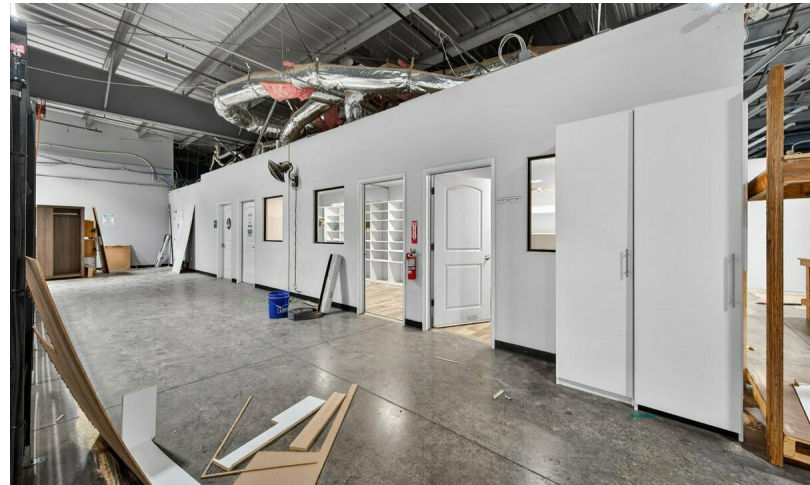
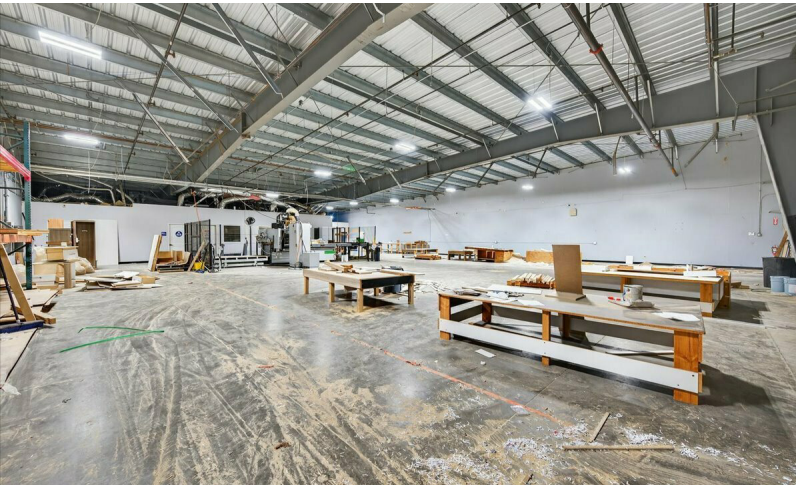
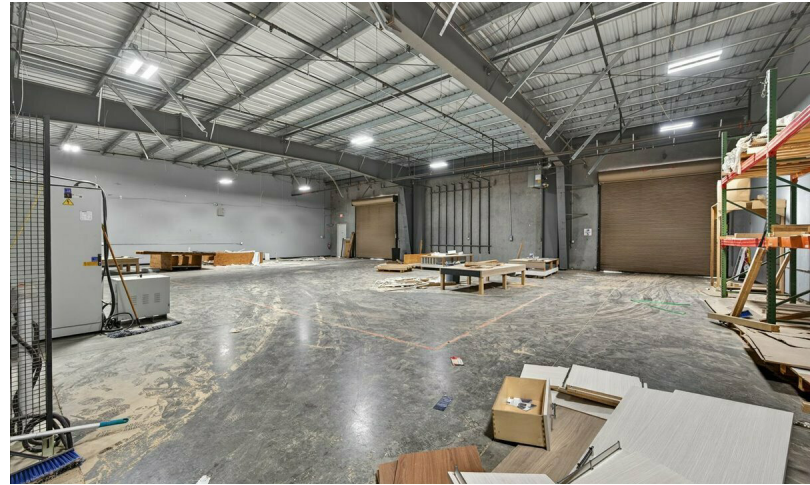
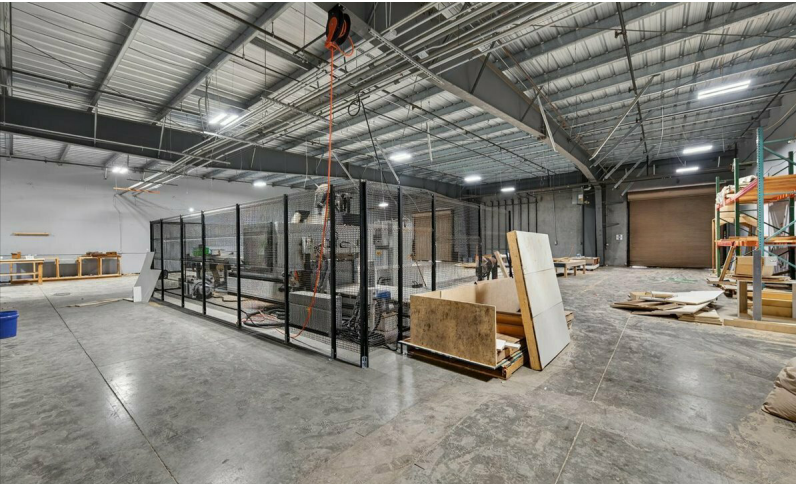
Central CA Commercial
Investments | Industrial | Office
Multifamily | Retail | Land | Specialty
CentralCaCommercial.com

We obtained the information above from sources we believe to be reliable. However, we have not verified its accuracy and make no guarantee, warranty or representation about it. It is submitted subject to the possibility of errors, omissions, change of price, rental or other conditions, prior sale, lease or financing, or withdrawal without notice. We include projections, opinions, assumptions or estimates for example only, and they may not represent current or future performance of the property. You and your tax and legal advisors should conduct your own investigation of the property and transaction.

High Quality Office/Warehouse Space in Northeast Fresno, CA
Industrial For Lease | 2695 N Fowler Ave #106 Fresno, CA 93727



**CENTRAL CA
COMMERCIAL**



Jared Ennis
Executive Vice President

CalDRE #01945284
jared@centralcacommercial.com
559.705.1000

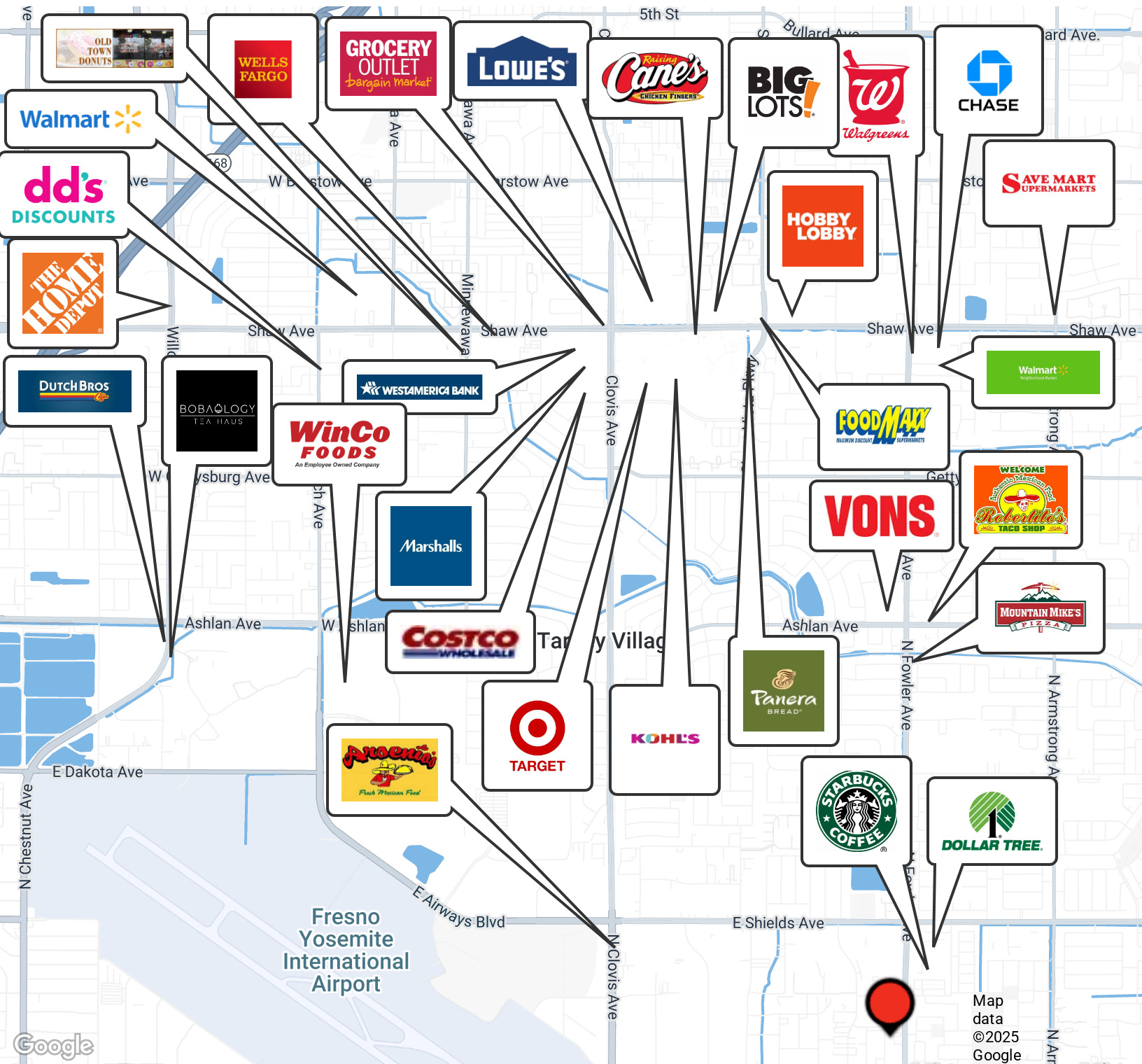
Kevin Land
Executive Managing Director

CalDRE #01516541
kevin@centralcacommercial.com
559.705.1000

Central CA Commercial
Investments | Industrial | Office
Multifamily | Retail | Land | Specialty
CentralCaCommercial.com

We obtained the information above from sources we believe to be reliable. However, we have not verified its accuracy and make no guarantee, warranty or representation about it. It is submitted subject to the possibility of errors, omissions, change of price, rental or other conditions, prior sale, lease or financing, or withdrawal without notice. We include projections, opinions, assumptions or estimates for example only, and they may not represent current or future performance of the property. You and your tax and legal advisors should conduct your own investigation of the property and transaction.

High Quality Office/Warehouse Space in Northeast Fresno, CA
Industrial For Lease | 2695 N Fowler Ave #106 Fresno, CA 93727



Jared Ennis
Executive Vice President
CalDRE #01945284
jared@centralcacommercial.com
559.705.1000

Kevin Land
Executive Managing Director
CalDRE #01516541
kevin@centralcacommercial.com
559.705.1000

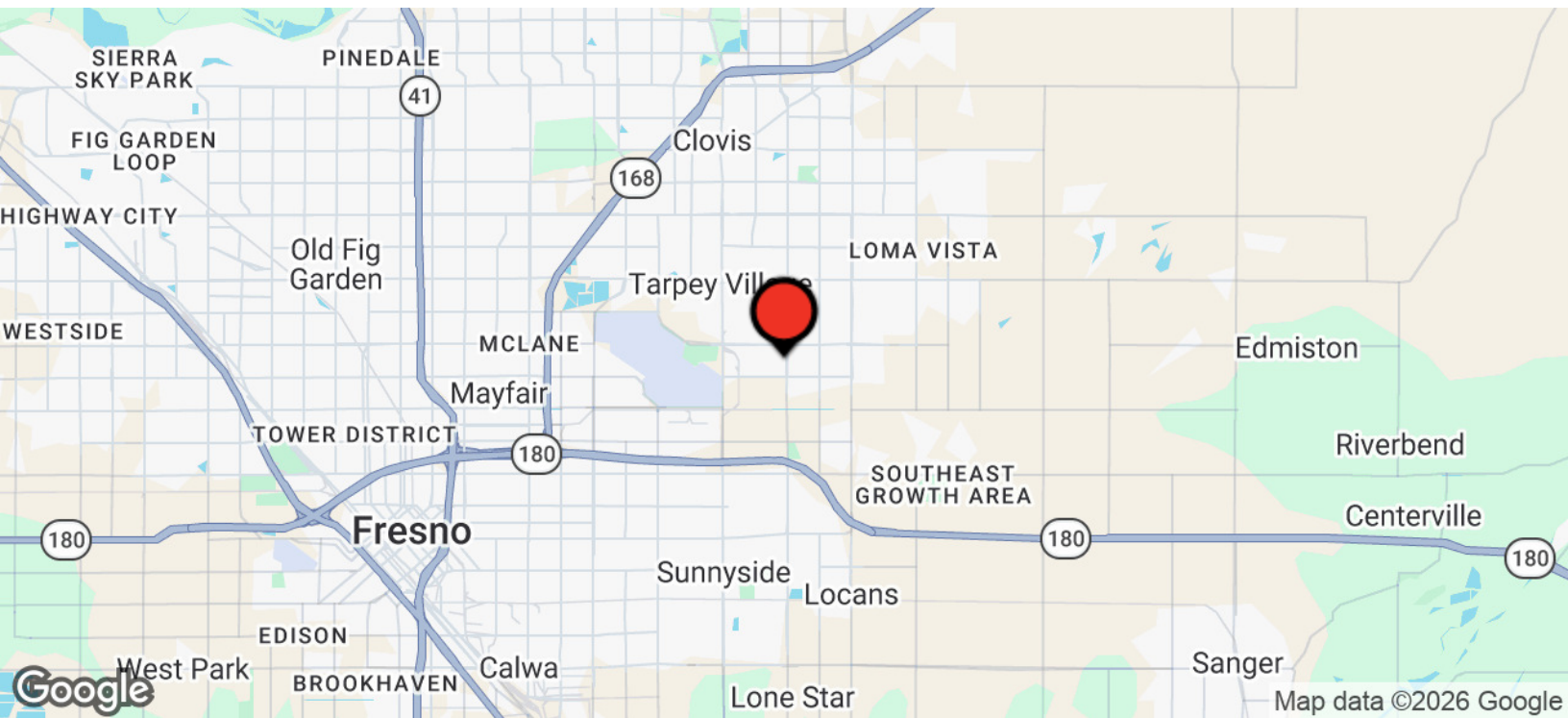
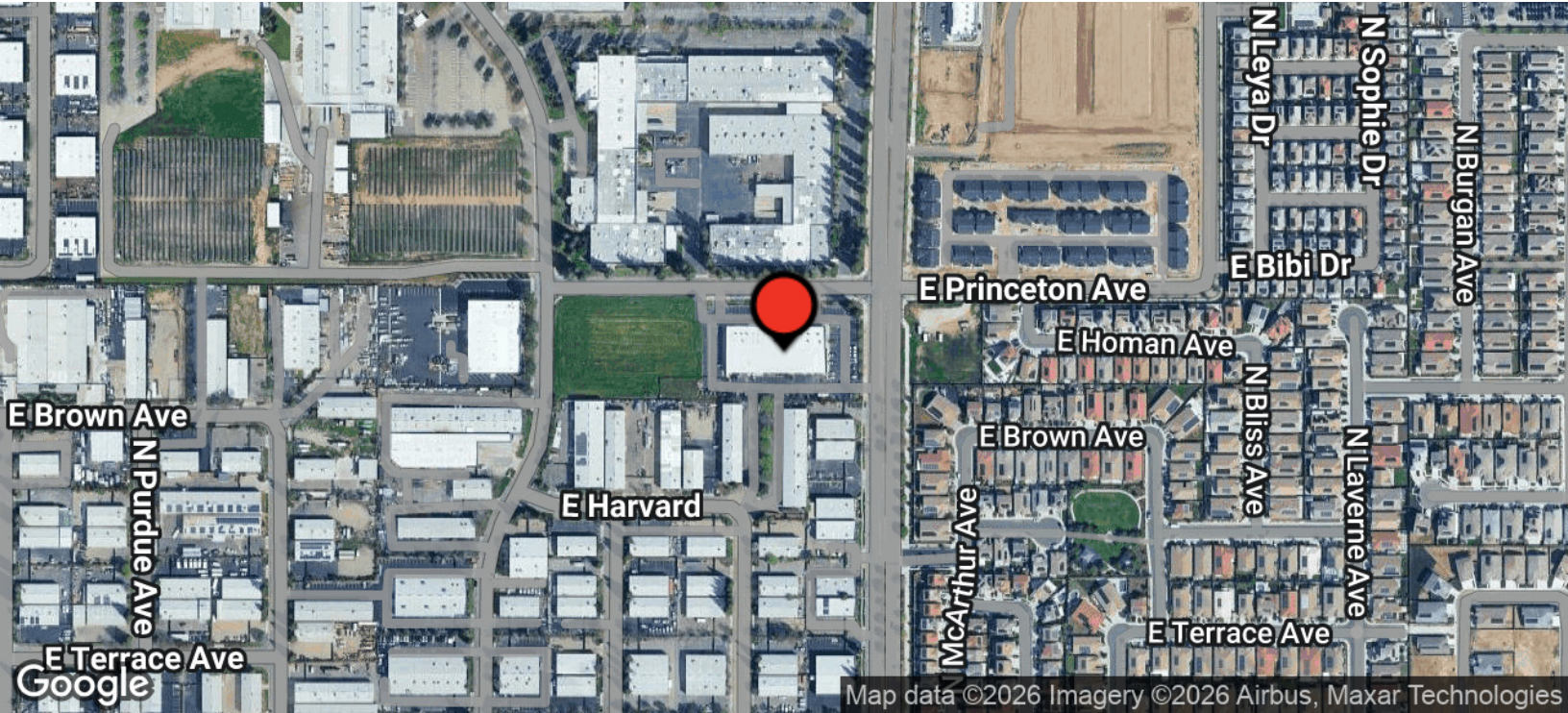
Central CA Commercial
Investments | Industrial | Office
Multifamily | Retail | Land | Specialty
CentralCaCommercial.com

We obtained the information above from sources we believe to be reliable. However, we have not verified its accuracy and make no guarantee, warranty or representation about it. It is submitted subject to the possibility of errors, omissions, change of price, rental or other conditions, prior sale, lease or financing, or withdrawal without notice. We include projections, opinions, assumptions or estimates for example only, and they may not represent current or future performance of the property. You and your tax and legal advisors should conduct your own investigation of the property and transaction.

High Quality Office/Warehouse Space in Northeast Fresno, CA
Industrial For Lease | 2695 N Fowler Ave #106 Fresno, CA 93727



**CENTRAL CA
COMMERCIAL**



Jared Ennis
Executive Vice President
CalDRE #01945284
jared@centralcacommercial.com
559.705.1000

Kevin Land
Executive Managing Director
CalDRE #01516541
kevin@centralcacommercial.com
559.705.1000

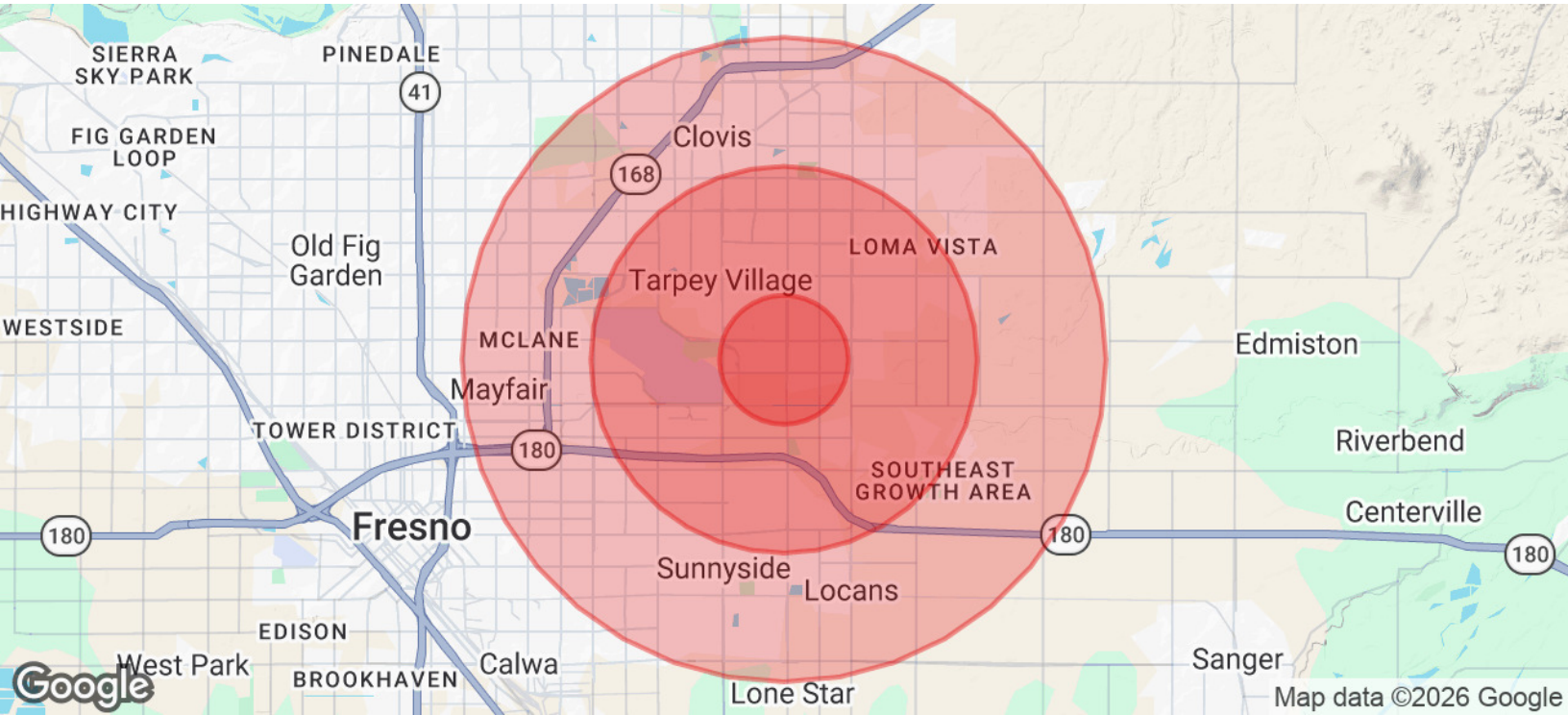
Central CA Commercial
Investments | Industrial | Office
Multifamily | Retail | Land | Specialty
CentralCaCommercial.com

We obtained the information above from sources we believe to be reliable. However, we have not verified its accuracy and make no guarantee, warranty or representation about it. It is submitted subject to the possibility of errors, omissions, change of price, rental or other conditions, prior sale, lease or financing, or withdrawal without notice. We include projections, opinions, assumptions or estimates for example only, and they may not represent current or future performance of the property. You and your tax and legal advisors should conduct your own investigation of the property and transaction.

High Quality Office/Warehouse Space in Northeast Fresno, CA
 Industrial For Lease | 2695 N Fowler Ave #106 Fresno, CA 93727



**CENTRAL CA
 COMMERCIAL**



POPULATION	1 MILE	3 MILES	5 MILES
Total Population	10,493	103,997	281,566
Average Age	35	36	36
Average Age (Male)	33	35	35
Average Age (Female)	36	37	37

HOUSEHOLDS & INCOME	1 MILE	3 MILES	5 MILES
Total Households	3,122	33,543	90,218
# of Persons per HH	3.4	3.1	3.1
Average HH Income	\$131,367	\$106,530	\$97,297
Average House Value	\$522,146	\$440,978	\$394,292

ETHNICITY (%)	1 MILE	3 MILES	5 MILES
Hispanic	39.4%	42.3%	48.7%

Jared Ennis
 Executive Vice President
 CalDRE #01945284
 jared@centralcacommercial.com
 559.705.1000

Kevin Land
 Executive Managing Director
 CalDRE #01516541
 kevin@centralcacommercial.com
 559.705.1000

Central CA Commercial
 Investments | Industrial | Office
 Multifamily | Retail | Land | Specialty
CentralCaCommercial.com

We obtained the information above from sources we believe to be reliable. However, we have not verified its accuracy and make no guarantee, warranty or representation about it. It is submitted subject to the possibility of errors, omissions, change of price, rental or other conditions, prior sale, lease or financing, or withdrawal without notice. We include projections, opinions, assumptions or estimates for example only, and they may not represent current or future performance of the property. You and your tax and legal advisors should conduct your own investigation of the property and transaction.