

FOR SALE

490 POST ST., SUITE 1650

PRICE REDUCED TO LOWEST
IN UNION SQUARE

San Francisco, CA 94102

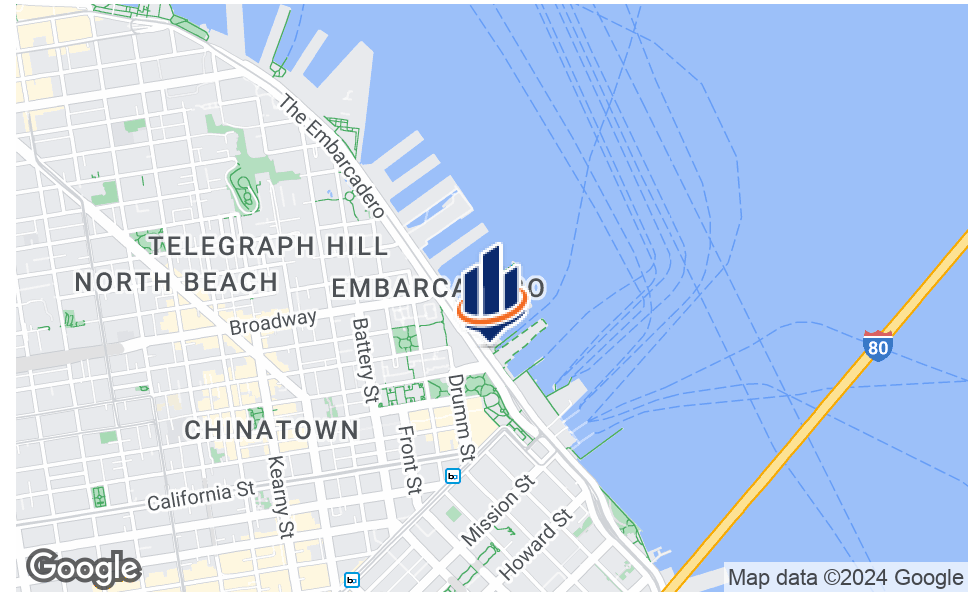
PRESENTED BY:

CATHERINE HOUSE, CRE, CCIM,
FRICS

catherineh@svn.com

CalDRE #01327824





OFFERING SUMMARY

SALE PRICE:	\$410,000
AVAILABLE SF:	547 SF
PRICE / PSF:	\$750
YEAR BUILT:	1925
RENOVATED:	2009
ZONING:	C-3-G
MARKET:	San Francisco
SUBMARKET:	Union Square
APN:	0296-139

PROPERTY OVERVIEW

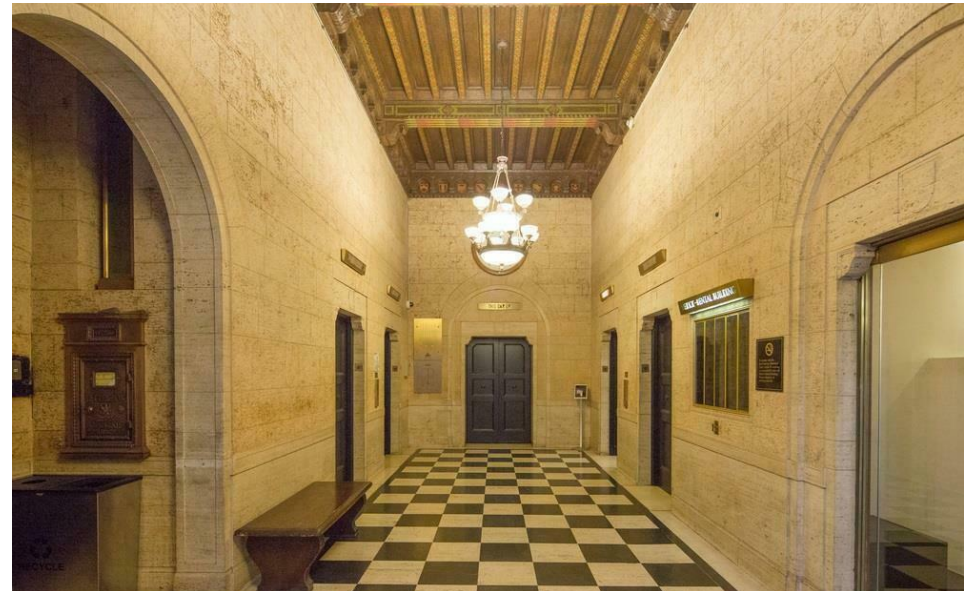
Medical office and professional office uses are permitted. Operable windows with lots of natural light. This is a commercial condominium in the rarely available 490 Post Street building.

PROPERTY HIGHLIGHTS

- Open 24/7 with building security
- Easy management of Owners Association expenses through a professional management company
- 490 Post is one of the main medical/dental buildings in San Francisco
- Great transportation links, BART and Muni
- Monthly/daily/hourly paid parking available in the building
- Multiple parking garages within a block

CATHERINE HOUSE, CRE, CCIM, FRICS

catherineh@svn.com
CalDRE #01327824



CATHERINE HOUSE, CRE, CCIM, FRICS

catherineh@svn.com

CalDRE #01327824

FOR SALE: MEDICAL OFFICE SPACE IN UNION SQ., SAN FRANCISCO - 490 POST, SUITE 1650 490 Post Street, Suite 1650 San Francisco, CA 94102

SVN | CAPITAL WEST PARTNERS 3



Operable Windows



Lots of Natural Light



View From Window



Main Room with Door

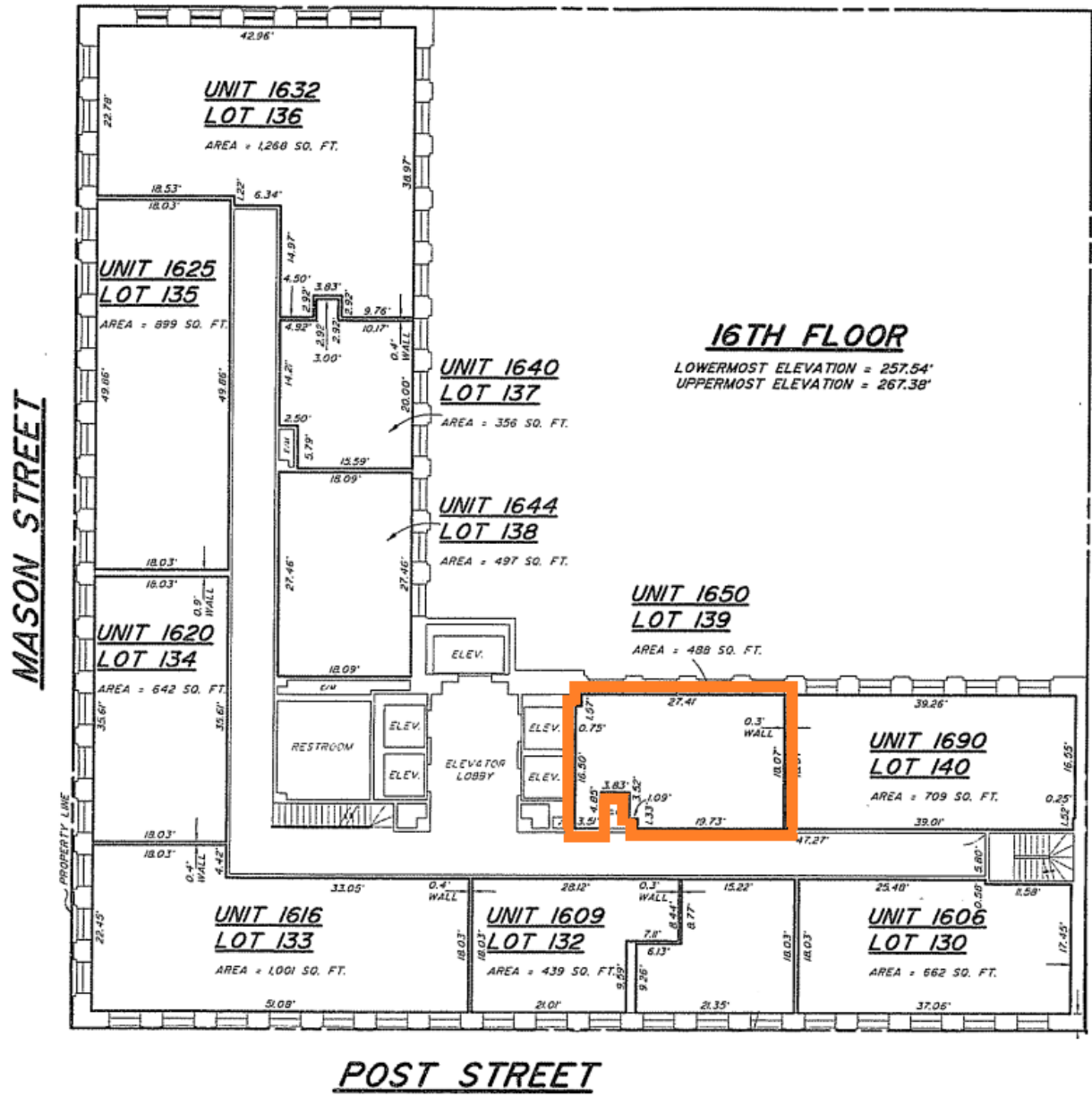


Waiting Room with Door

CATHERINE HOUSE, CRE, CCIM, FRICS

catherineh@svn.com

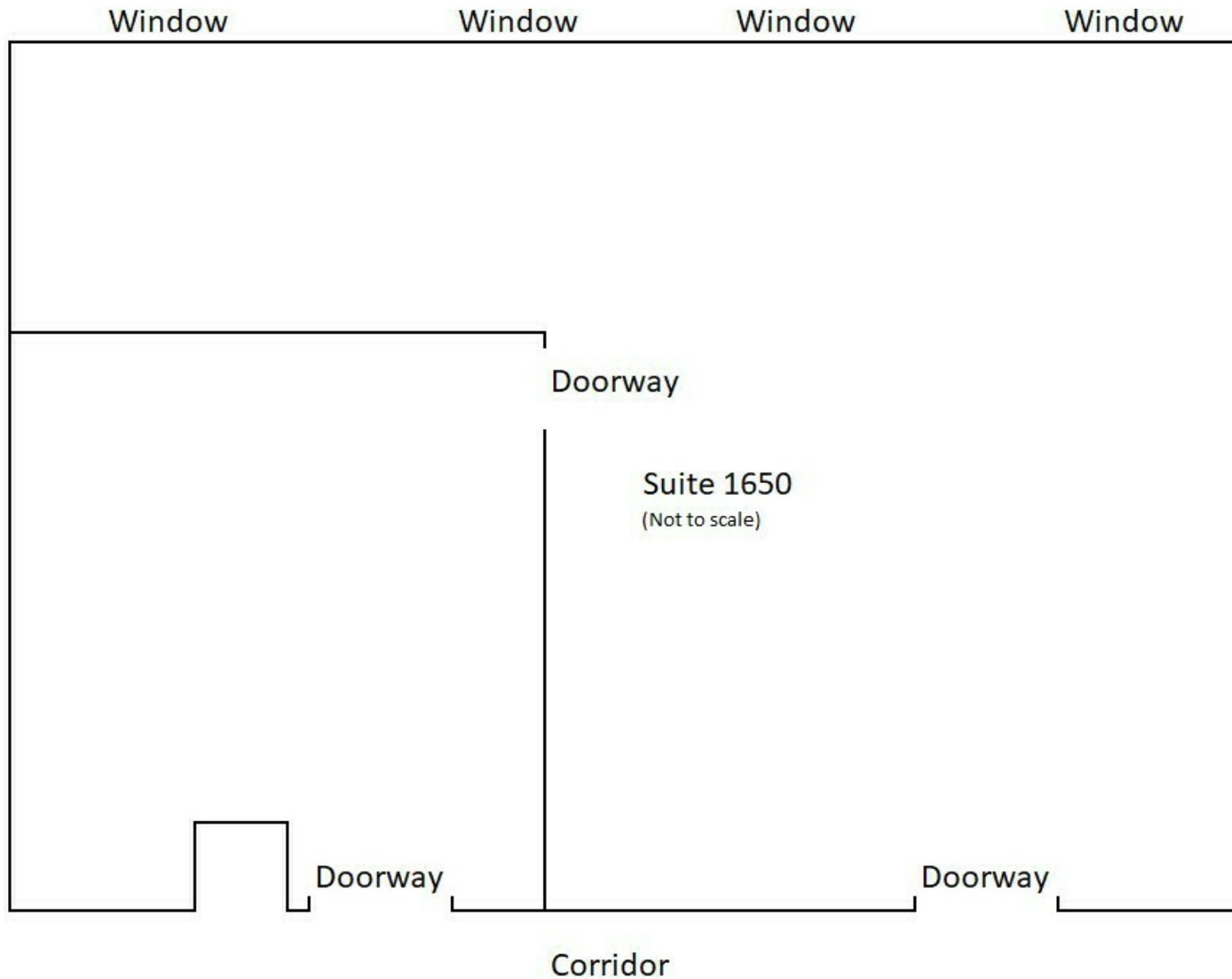
CalDRE #01327824



CATHERINE HOUSE, CRE, CCIM, FRICS

catherineh@svn.com

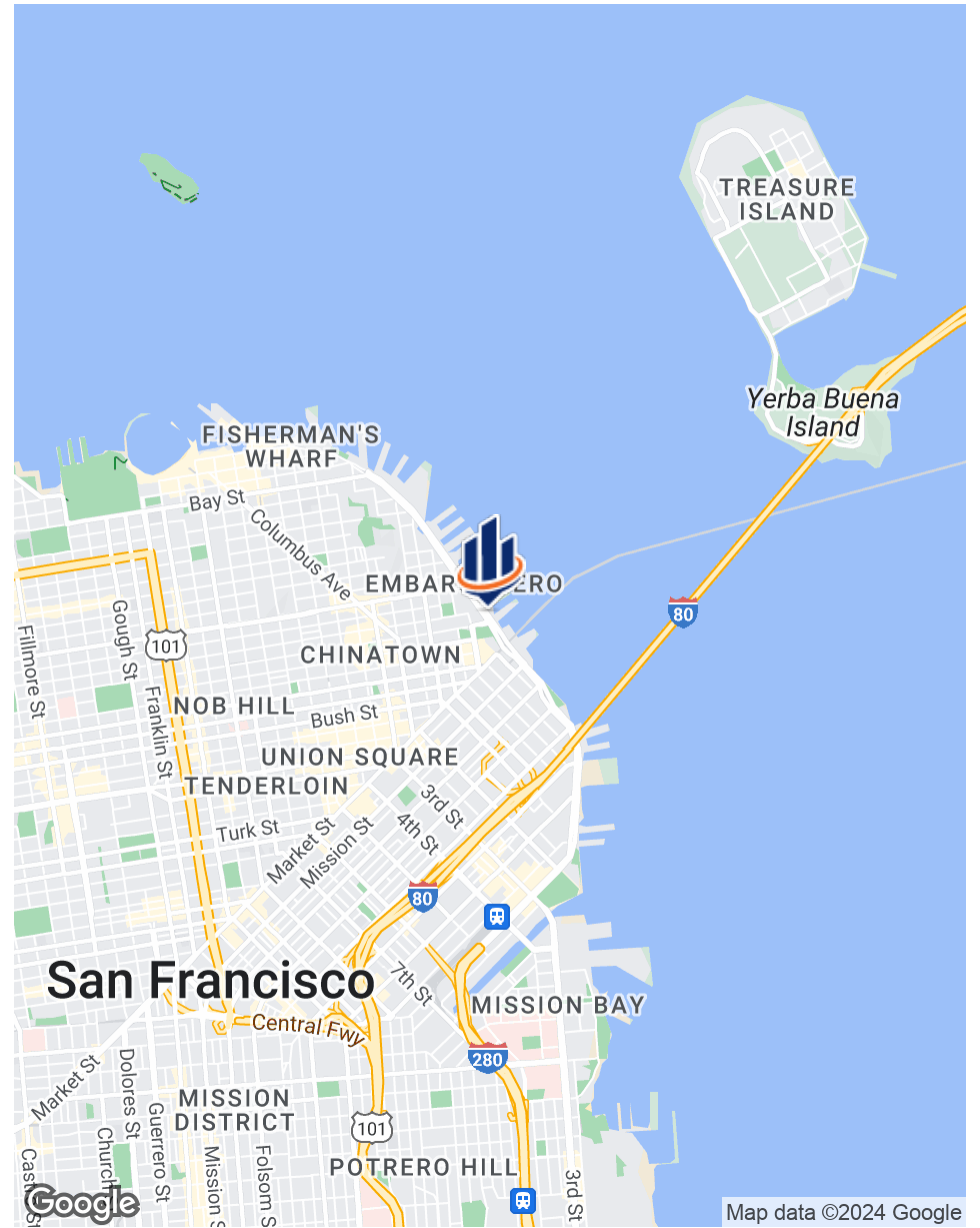
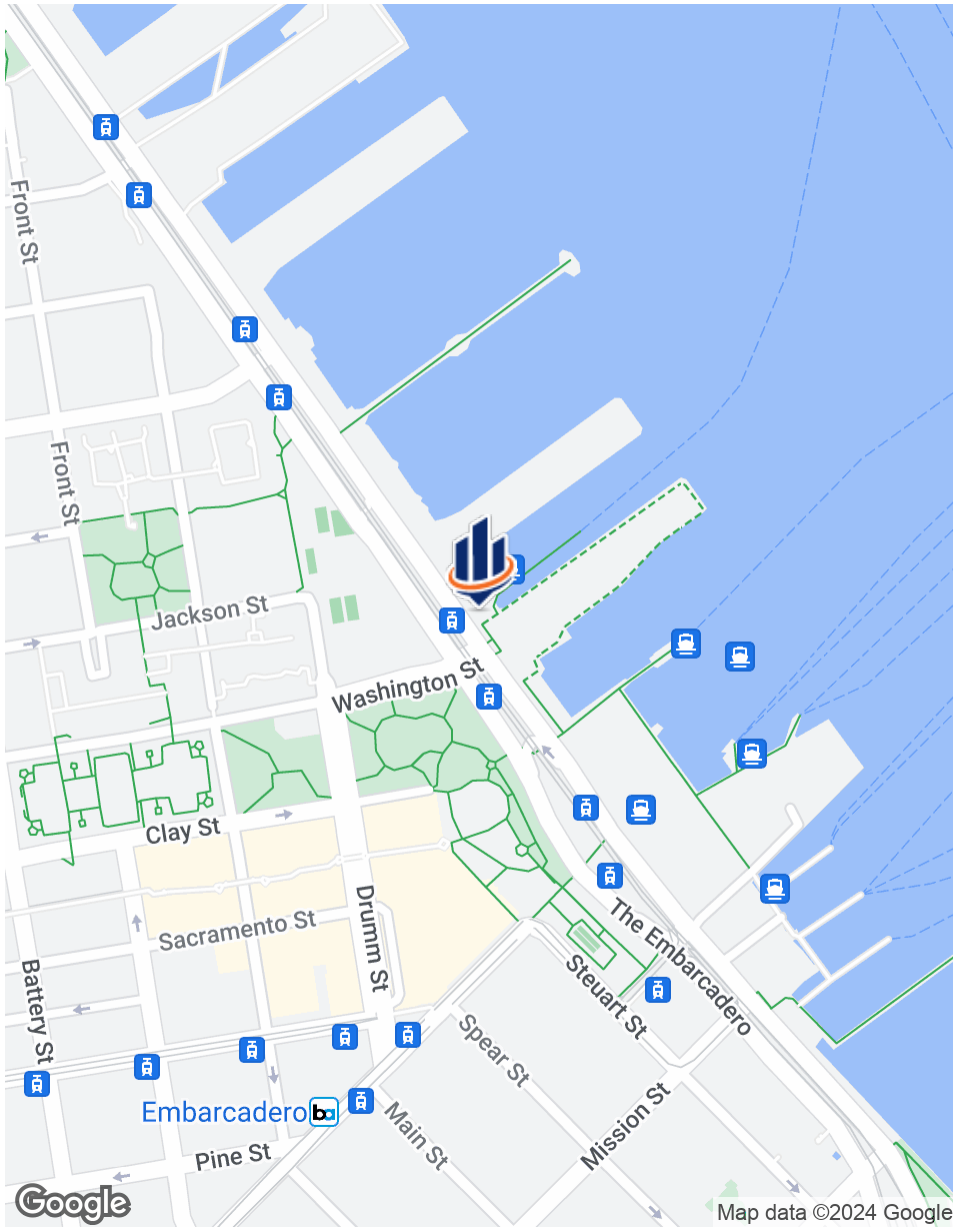
CalDRE #01327824



CATHERINE HOUSE, CRE, CCIM, FRICS

catherineh@svn.com

CalDRE #01327824



CATHERINE HOUSE, CRE, CCIM, FRICS

catherineh@svn.com

CalDRE #01327824