

FOR SALE

3838 S HWY 287, WAXAHACHIE, TX 75165



Property Highlights

Property Located in Waxahachie Tx

Net Income of 122,460

CAP Rate 7.225%

Phase Power III

Building was built in 2000

Current tenant lease expires Oct. 2026

Offering Summary

PRICE: \$1,695,000

Building Sq Ft: 11,625 SQ FT

CONTACT US

+972-342-0369

oscarehiviewrealestate.com

www.hiviewrealestate.com

HI VIEW
REAL ESTATE

3838 S HWY 287, WAXAHACHIE, TX 75165

PROPERTY HIGHLIGHTS



LOCATION INFORMATION

Street Address	3838 S Hwy 287
City, State, Zip	Waxahachie, TX 75165
County	Ellis

BUILDING INFORMATION

Tenancy	Occupied
Ceiling Height	15'
Year Built	2000
Construction Status	Completed
Condition	GOOD

PROPERTY HIGHLIGHTS


Property located in Ellis County
Warehouses close to Highway 287
Building was built in 2000
Great location with high traffic counts and visibility



HI VIEW
REAL ESTATE

www.hiviewrealestate.com

CONTACT US

 +972-342-0369

 oscar@hiviewrealestate.com

3838 S HWY 287, WAXAHACHIE, TX 75165


PROPERTY AERIAL



HI VIEW
REAL ESTATE

www.hiviewrealestate.com

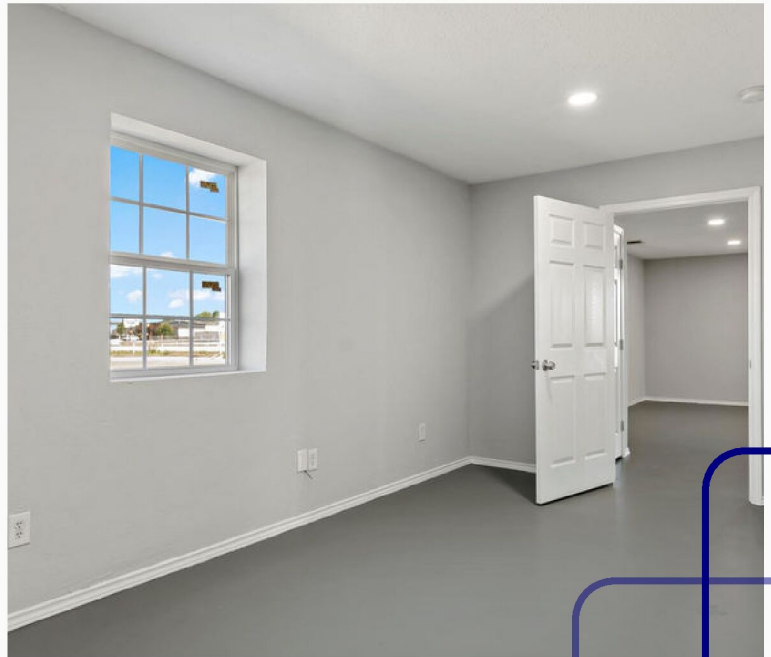
CONTACT US

 +972-342-0369

 oscar@hiviewrealestate.com

3838 S HWY 287, WAXAHACHIE, TX 75165


INTERIOR PHOTOS



HI VIEW
REAL ESTATE

www.hiviewrealestate.com

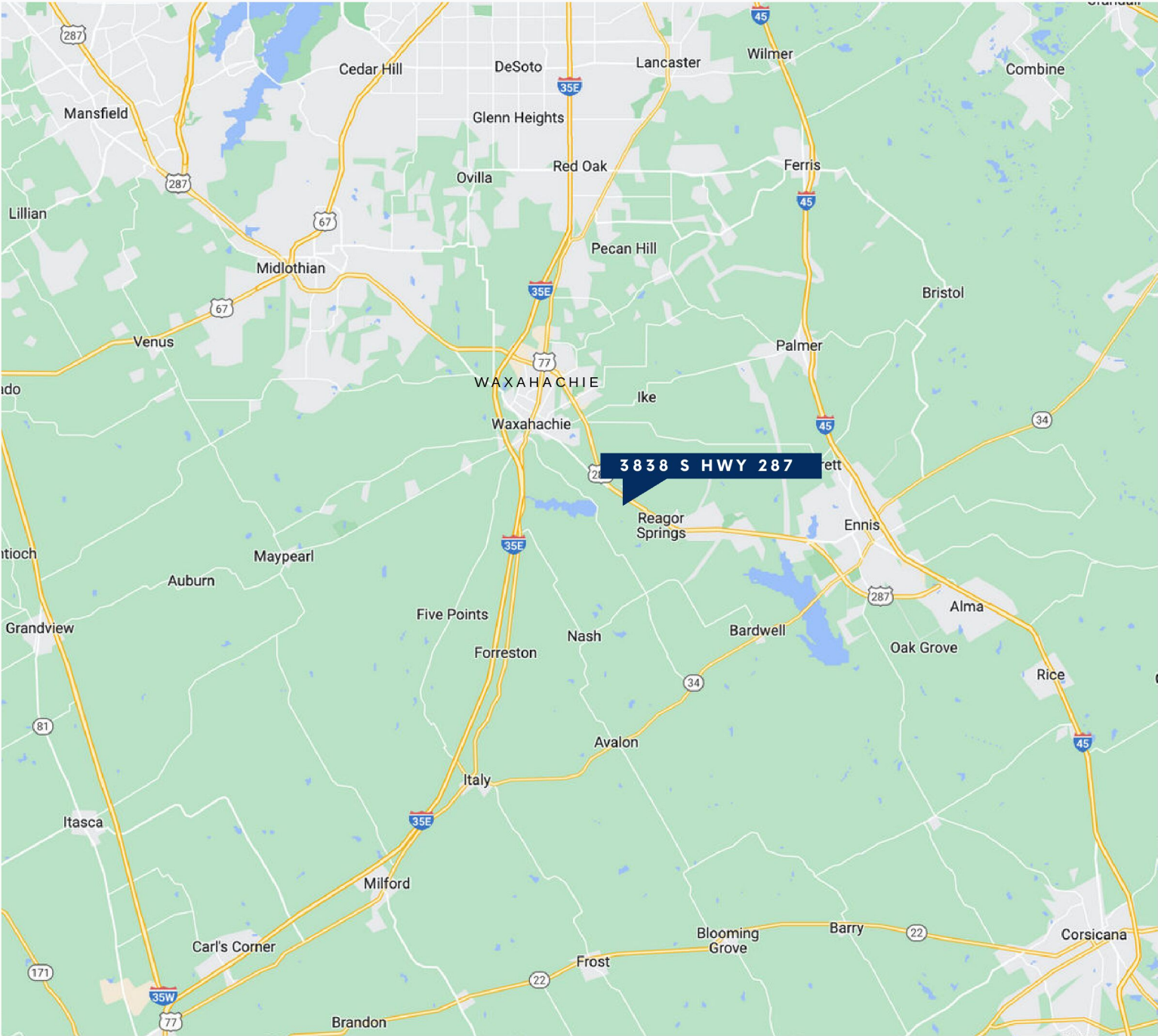
CONTACT US

 +972-342-0369

 oscar@hiviewrealestate.com

3838 S HWY 287, WAXAHACHIE, TX 75165

LOCATION MAP



HI VIEW
REAL ESTATE

www.hiviewrealestate.com

CONTACT US

+972-342-0369

oscar@hiviewrealestate.com