

FOR SALE

400 Cumberland Avenue, Bays 1 & 2

Portsmouth, VA 23707



TOM DANA, OWNER / AGENT

Vice President

757 499 2894

tom.dana@thalhimer.com



PRICE REDUCED

AUTOMOTIVE / WAREHOUSE
±6,800 SF

Independently Owned and Operated / A Member of the Cushman & Wakefield Alliance

Cushman Wakefield | Thalhimer ©2025. No warranty or representation, express or implied, is made to the accuracy or completeness of the information contained herein, and same is submitted subject to errors, omissions, change of price, rental or other conditions, withdrawal without notice, and to any special listing conditions, imposed by the property owner(s). As applicable, we make no representation as to the condition of the property (or properties) in question.

PROPERTY HIGHLIGHTS

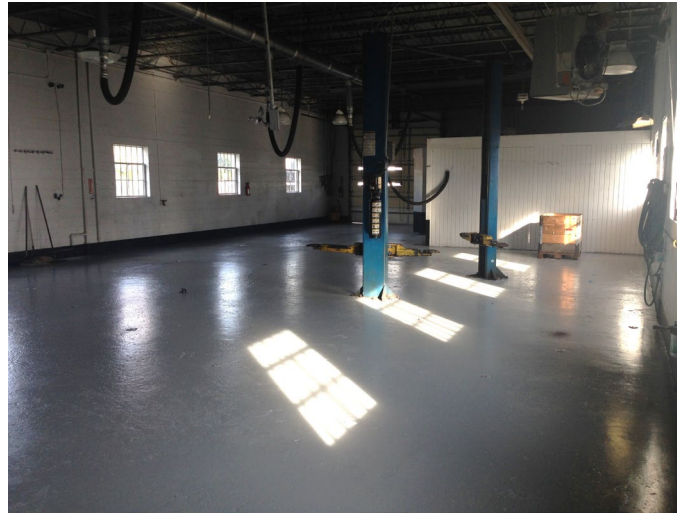
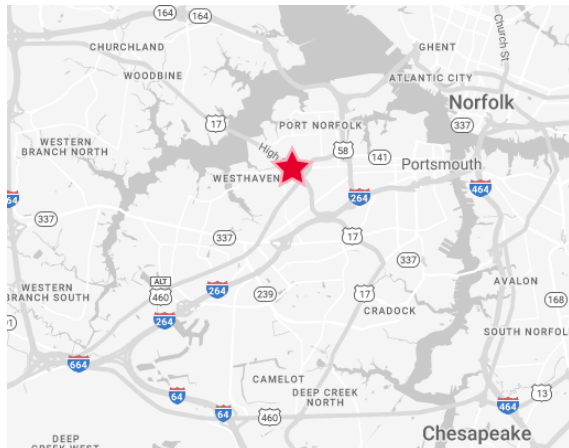


THALHIMER

Property Features

- $\pm 6,800$ SF automotive or warehouse space
- Visibility from High Street with 21,000 vehicles per day
- Close to Maryview Hospital
- Zoned GMU for variety of uses
- Grade level door on front, 12' x 12'
- (Bay 1)
- Two (2) grade level doors on side
- (Bay 2)
- Includes fenced yard across Queen Street (± 0.17 acres)
- Asking Price: ~~\$600,000.00~~

\$550,000.00 New Price



An aerial map of Portsmouth, New Hampshire, and surrounding areas. A red pin with a white triangle points to a location on a road, with a red rectangular label '400 CUMBERLAND AVE' placed over it. The map shows a dense network of roads, including major highways like I-264 (I-93) and I-93 (I-264), and local roads like US-1, US-58, and NH-141. Various neighborhoods are labeled, including Westhaven, Midtown, Port Norfolk, West Park View, Park View, Swimming Point, Portsmouth, and Olde Towne. The Elizabeth River is visible on the left and right sides of the map. Other nearby locations like Atlantic City, Norfolk, and TIDE GA are also visible. The map is overlaid with a dark blue banner in the top left corner containing the text 'PROPERTY AERIAL MAP' in white.