

30165 S. Hill Road

New Hudson, MI

49,963 - 55,971 SF Available



Comments

- + Sublease Rate: \$6.50/SF NNN
- + Available Space: 49,963 - 55,971 Square Feet
- + Six (6) Dock Doors
- + Two (2) Grade Level Doors
- + Ceiling Height: 30' feet clear
- + ESFR Fire Suppression System
- + Great I-96 Access via Milford Road or Wixom Road Interchanges

Property Features

\$6.50/NNNN

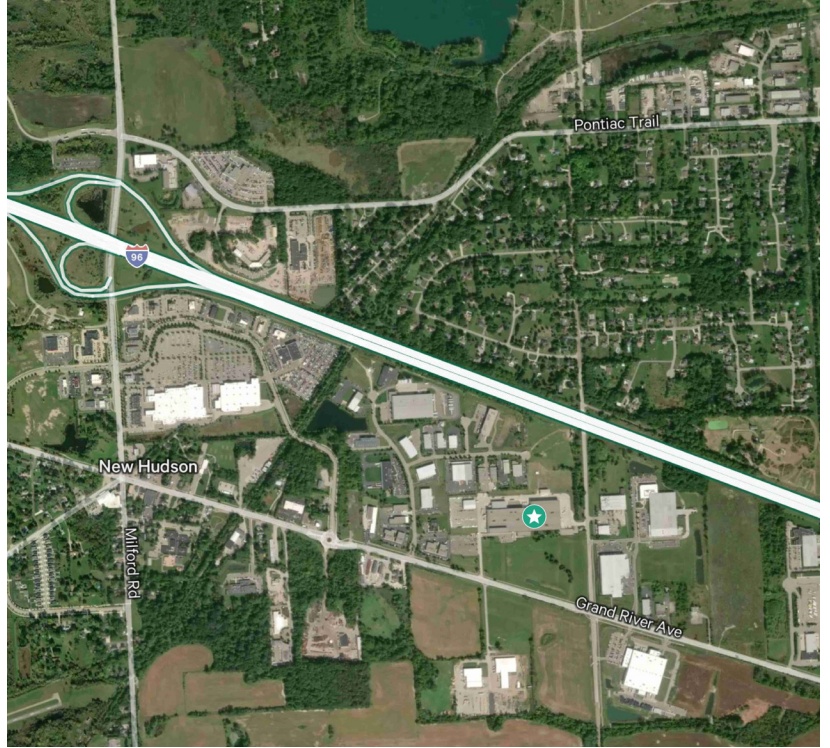
Lease Rate

M-1

Zoning

Oakland

County



Total Available: 49,963 - 55,971 SF

HVAC: Tube Radiant

Divisible: No

Power: 1,500 - 2,000a/277 - 480v 3-phase

Construction: Steel/Metal Siding

Ceiling Height: 30'

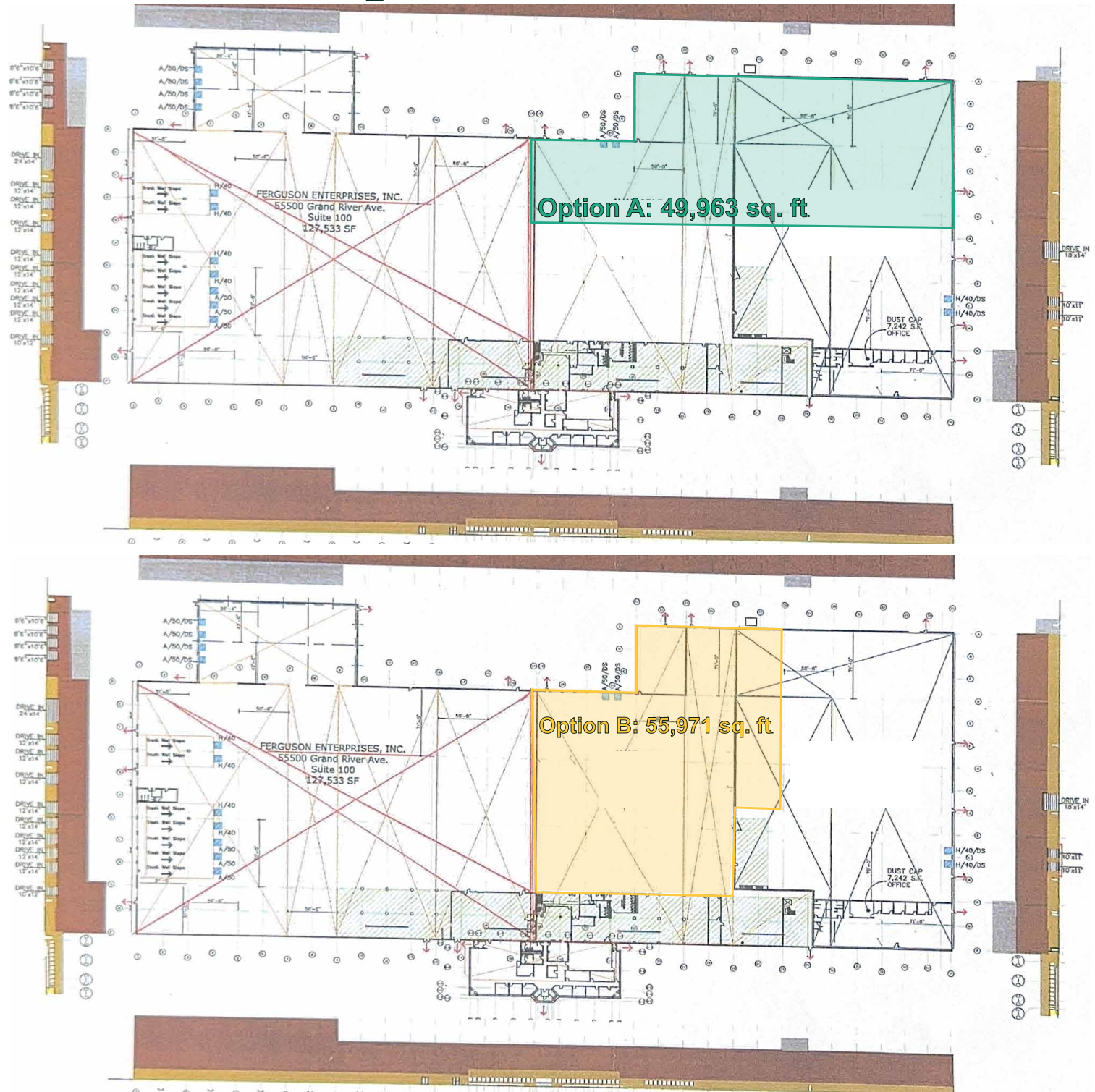
Sprinklers: ESFR

Grade Level Doors: Two (2) 12' x 14'

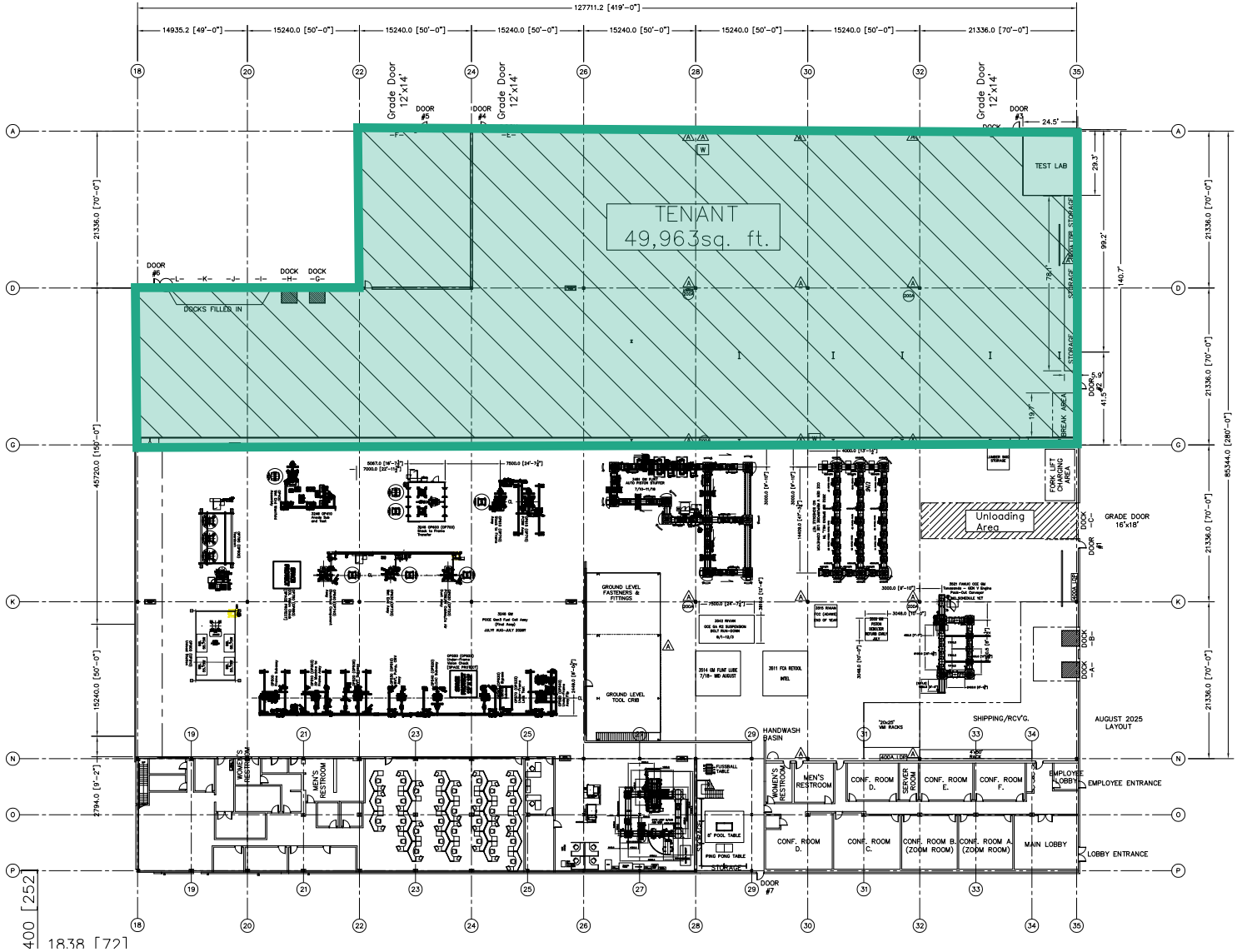
Truckwells / Docks: Six (6) Docks

Rail: No

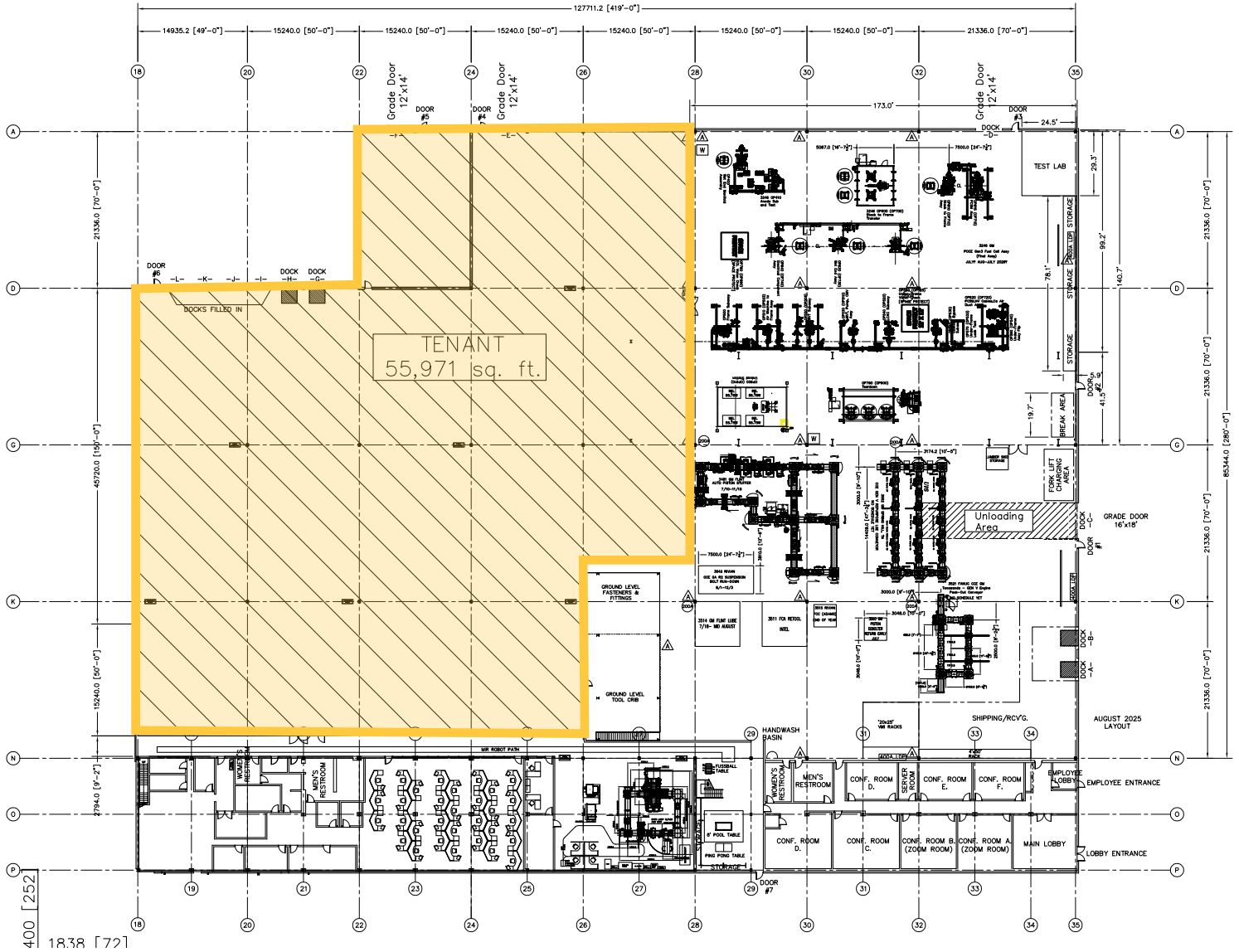
Floor Plan Option Outlines



Floor Plan - Option A



Floor Plan - Option B



Contact Us

Charles M. Ginster
Senior Vice President
+1 248 351 2063
chuck.ginster@cbre.com

Jake Ginster, SIOR
Senior Associate
+1 248 633 6119
Jake.Ginster@cbre.com