



# LAND FOR SALE

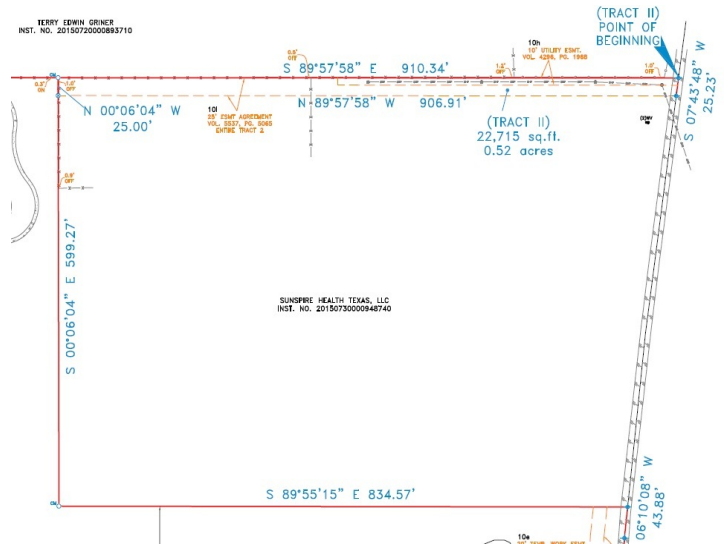
3646 County Road 444

Princeton, Texas 75407



## Property Highlights

- Asking Price: \$950,000
- Commercial Land
- Frontage 652' on County Road 444
- Parcels R-6890-003-1170-1
- Princeton, Texas is one of the fastest growing cities in the state. Prime opportunity for development.



For more information, please contact:

**Preston Knowlton**  
 Director  
 214.697.4273  
[Preston.Knowlton@cushwake.com](mailto:Preston.Knowlton@cushwake.com)

2021 McKinney Avenue  
 Suite 900  
 Dallas, TX 75201

[cushmanwakefield.com](http://cushmanwakefield.com)