



**GENESEE
COMMERCIAL
GROUP, LLC**

FOR SALE

RETAIL / OFFICE
CONDO

27886 MEADOW DRIVE
Evergreen, Colorado 80439

FOR SALE



PROPERTY HIGHLIGHTS

- Retail or Office Condo in move-in condition
- Excellent location on Meadow Drive near Colorado Highway 74
- Layout consists of large open area, four private rooms, large storage room with shelving, kitchenette and restroom
- Well maintained by owner/user
- Free parking in front
- Roof less than one year old

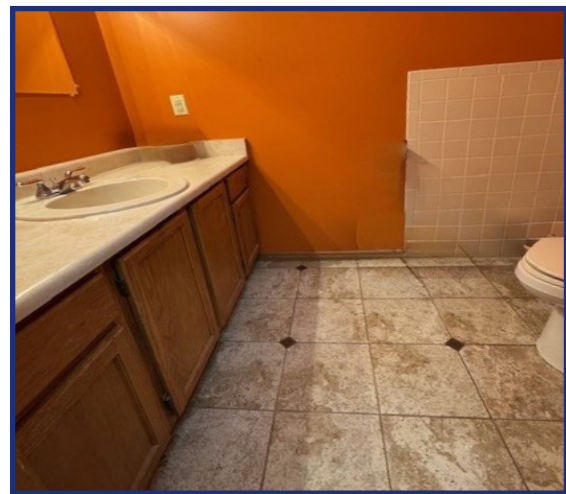
BUILDING SPECIFICATIONS

Available:	1,817 SF
Sale Price:	\$400,000
Condo Association Dues:	\$245/month
2024 Property Taxes:	\$10,433.38
Zoning: (Unincorporated Jefferson County)	C-1

FOR MORE INFORMATION CONTACT:

RENÉE SPICER

rspicer@gcgcre.com | 720.476.5226



FOR MORE INFORMATION CONTACT:

RENÉE SPICER

rspicer@gcgcre.com | 720.476.5226

GENESEE COMMERCIAL GROUP, LLC | 710 KIPLING STREET, SUITE 403 | LAKEWOOD, COLORADO 80215 | WWW.GCGCRE.COM

No warranty or representation is made as to the accuracy of the foregoing information. Terms of sale or lease and availability are subject to change or withdrawal without notice.