

Land For Sale

Colliers

Phase 2
167 Acres

15

SOLD

Available

SOLD

Available

Available

Available

Phase 1
10.16 Acres
Available Immediately

Brigham City Land

70 North 1200 West
Brigham City, Utah 84302

Phase 1:

10.16 Acres
Remaining

Phase 2:

167 Acres



Phase 1:
26.2 Acres
of Improved
Industrial Sites



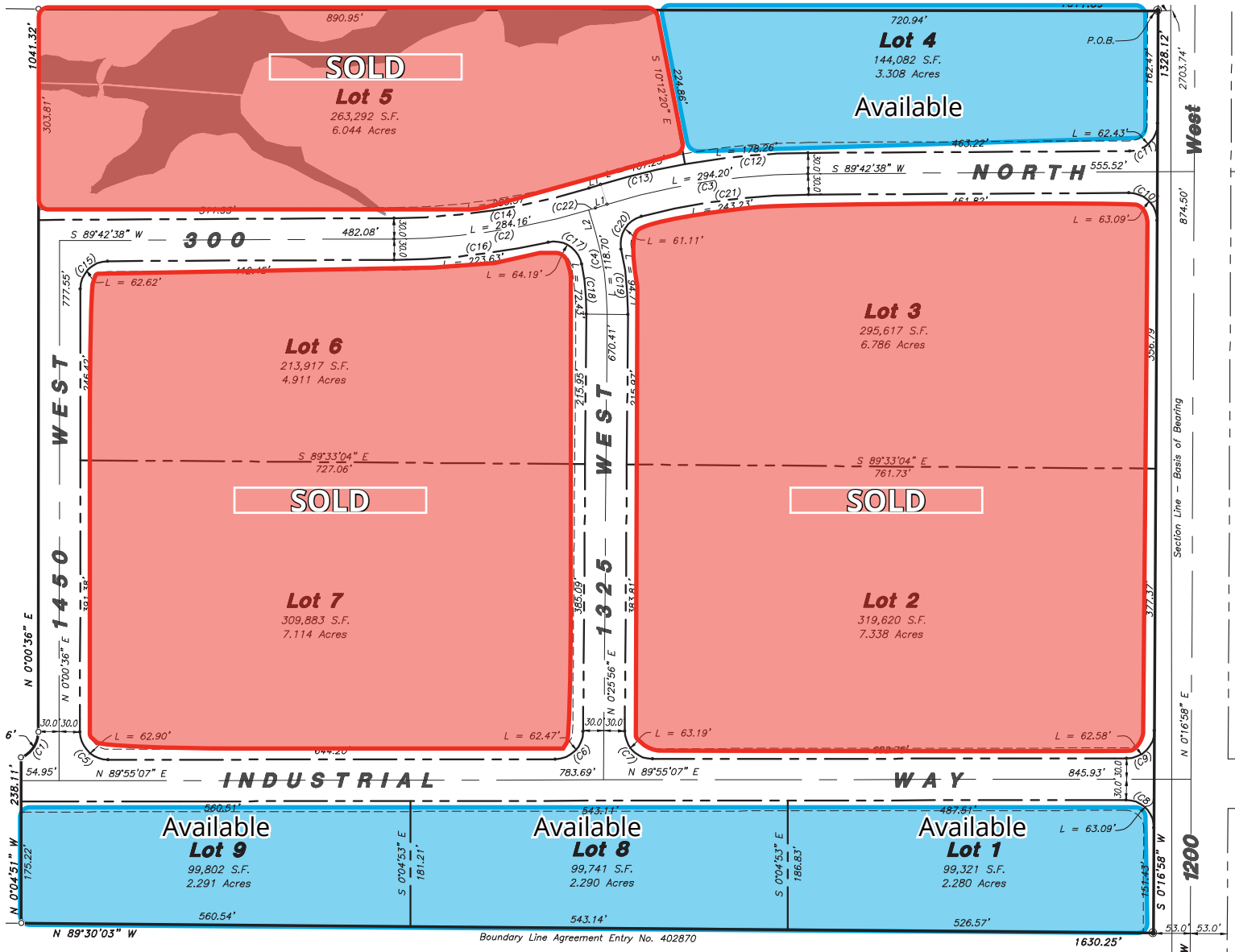
\$5.50 - \$8.50
PSF

Rusty Bollow, SIOR, CCIM, MRED
Executive Vice President
+1 801 633 4800
rusty.bollow@colliers.com

Bobby Stevens, SIOR
Senior Vice President
+1 801 696 9617
bobby.stevens@colliers.com

Accelerating success.

Phase 1 Site Plan



Phase 1 Information

- Phase 1 of a 209 Acre Master Planned Industrial Park
- Improved Industrial Lots with utilities stubbed in to the Site

70 North 1200 West | For Sale

Photo Gallery



Location & Access



Brigham City
Fast Food, QSR, Restaurants

Brigham City
Industrial Tenants

Brigham City
Major Tenants

Drive Time
Brigham City to Ogden

15 Minutes
19.8 miles

Ogden
Industrial Tenants

INDICATORS	Aggregating US
Population	1,100,000
2017 Total Population	1,100,000
2016 Total Population	1,090,000
2015 Total Population	1,080,000
2014 Total Population	1,070,000
2013 Total Population	1,060,000
2012 Total Population	1,050,000
2011 Total Population	1,040,000
2010 Total Population	1,030,000
2009 Total Population	1,020,000
2008 Total Population	1,010,000
2007 Total Population	1,000,000
2006 Total Population	990,000
2005 Total Population	980,000
2004 Total Population	970,000
2003 Total Population	960,000
2002 Total Population	950,000
2001 Total Population	940,000
2000 Total Population	930,000
1999 Total Population	920,000
1998 Total Population	910,000
1997 Total Population	900,000
1996 Total Population	890,000
1995 Total Population	880,000
1994 Total Population	870,000
1993 Total Population	860,000
1992 Total Population	850,000
1991 Total Population	840,000
1990 Total Population	830,000
1989 Total Population	820,000
1988 Total Population	810,000
1987 Total Population	800,000
1986 Total Population	790,000
1985 Total Population	780,000
1984 Total Population	770,000
1983 Total Population	760,000
1982 Total Population	750,000
1981 Total Population	740,000
1980 Total Population	730,000
1979 Total Population	720,000
1978 Total Population	710,000
1977 Total Population	700,000
1976 Total Population	690,000
1975 Total Population	680,000
1974 Total Population	670,000
1973 Total Population	660,000
1972 Total Population	650,000
1971 Total Population	640,000
1970 Total Population	630,000
1969 Total Population	620,000
1968 Total Population	610,000
1967 Total Population	600,000
1966 Total Population	590,000
1965 Total Population	580,000
1964 Total Population	570,000
1963 Total Population	560,000
1962 Total Population	550,000
1961 Total Population	540,000
1960 Total Population	530,000
1959 Total Population	520,000
1958 Total Population	510,000
1957 Total Population	500,000
1956 Total Population	490,000
1955 Total Population	480,000
1954 Total Population	470,000
1953 Total Population	460,000
1952 Total Population	450,000
1951 Total Population	440,000
1950 Total Population	430,000
1949 Total Population	420,000
1948 Total Population	410,000
1947 Total Population	400,000
1946 Total Population	390,000
1945 Total Population	380,000
1944 Total Population	370,000
1943 Total Population	360,000
1942 Total Population	350,000
1941 Total Population	340,000
1940 Total Population	330,000
1939 Total Population	320,000
1938 Total Population	310,000
1937 Total Population	300,000
1936 Total Population	290,000
1935 Total Population	280,000
1934 Total Population	270,000
1933 Total Population	260,000
1932 Total Population	250,000
1931 Total Population	240,000
1930 Total Population	230,000
1929 Total Population	220,000
1928 Total Population	210,000
1927 Total Population	200,000
1926 Total Population	190,000
1925 Total Population	180,000
1924 Total Population	170,000
1923 Total Population	160,000
1922 Total Population	150,000
1921 Total Population	140,000
1920 Total Population	130,000
1919 Total Population	120,000
1918 Total Population	110,000
1917 Total Population	100,000
1916 Total Population	90,000
1915 Total Population	80,000
1914 Total Population	70,000
1913 Total Population	60,000
1912 Total Population	50,000
1911 Total Population	40,000
1910 Total Population	30,000
1909 Total Population	20,000
1908 Total Population	10,000
1907 Total Population	0



Phase 2
167 Acres

Phase 1
10.16 Acres
remaining

**~55 Minutes to Salt Lake
International Airport and
Downtown Salt Lake City**



Colliers

6440 S. Millrock Dr., Suite 500
Salt Lake City, UT 84121
Main: +1 801 947 8300
colliers.com

Rusty Bollow, SIOR, CCIM, MRED
Executive Vice President
+1 801 633 4800
rusty.bollow@colliers.com

Bobby Stevens, SIOR
Senior Vice President
+1 801 696 9617
bobby.stevens@colliers.com