

FOR LEASE



## NORTHPARK II

11640 Northpark Drive | Wake Forest, NC 27587



CAPITAL  
ASSOCIATES®

# NORTHPARK II

11640 Northpark Drive | Wake Forest, NC

<b>PROPERTY TYPE</b>	Medical Office
<b>BUILDING SIZE</b>	52,236 SF
<b>LEASING RATE</b>	\$28.50/SF
<b>LEASE TYPE</b>	Full Service
<b>YEAR BUILT</b>	2008
<b>COUNTY</b>	Wake
<b>LOCATION</b>	Wake Forest, NC
<b>FLOORS</b>	3
<b>PARKING</b>	4/1000 SF

**BRET MULLER**  
919.523.4200  
bmuller@capitalassociates.com

**WES JOHNSON**  
919.422.4853  
wjohnson@capitalassociates.com



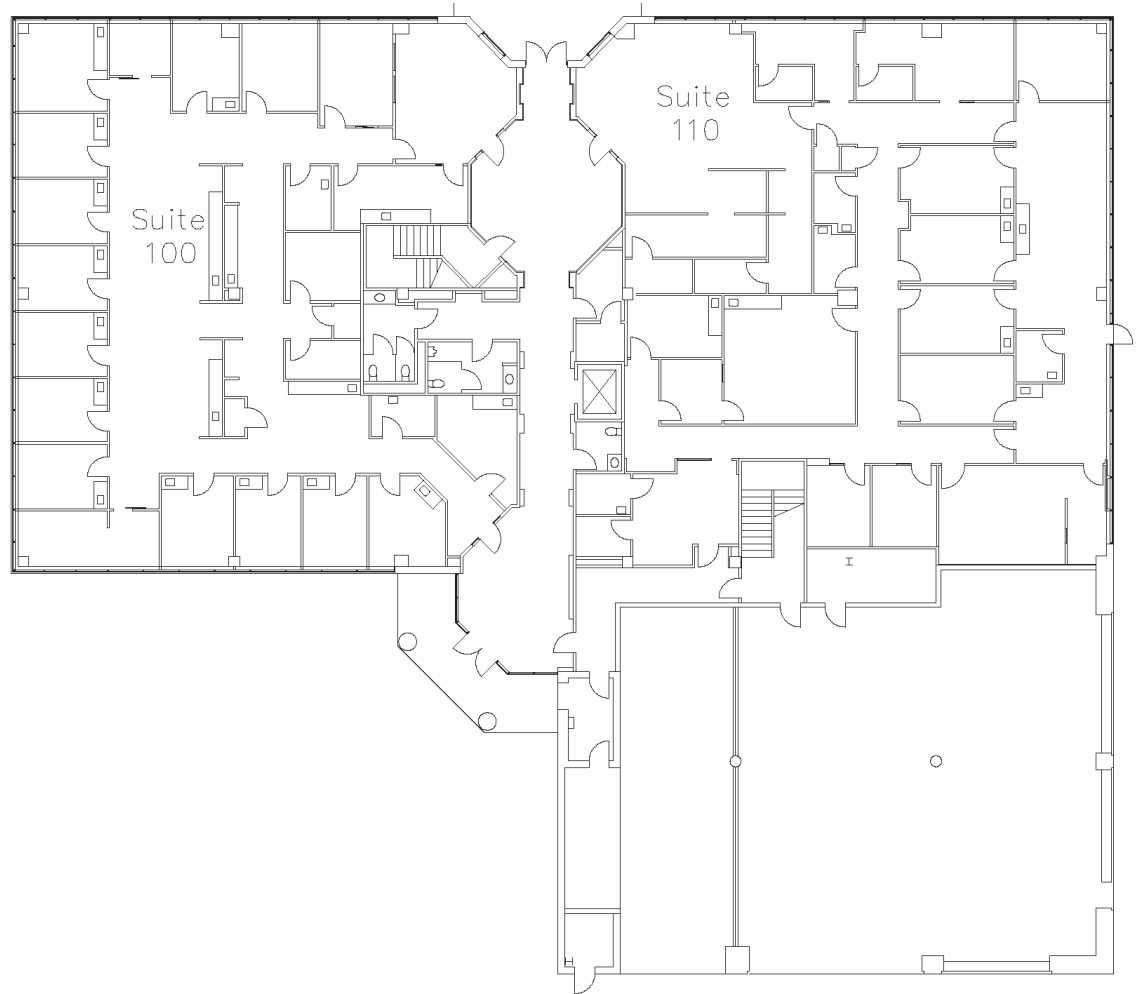
# NORTHPARK II

11640 Northpark Drive | Wake Forest, NC

**AVAILABLE**  
**12/01/2024**

First Floor  
Suite 100

6,316 SF



**BRET MULLER**

919.523.4200

[bmuller@capitalassociates.com](mailto:bmuller@capitalassociates.com)

**WES JOHNSON**

919.422.4853

[wjohnson@capitalassociates.com](mailto:wjohnson@capitalassociates.com)

# NORTHPARK II

11640 Northpark Drive | Wake Forest, NC

## PROPERTY HIGHLIGHTS

Northpark II is a brick, window-lined 52,236 square foot three-story medical office building located in Wake Forest, NC.

- Conveniently located near the intersection of Hwy 98 Bypass and Hwy 1 (Capital Boulevard) and easily accessible from Wake Forest and surrounding areas.
- Within 2 miles of Rex Healthcare of Wakefield and many other medical providers.

**BRET MULLER**

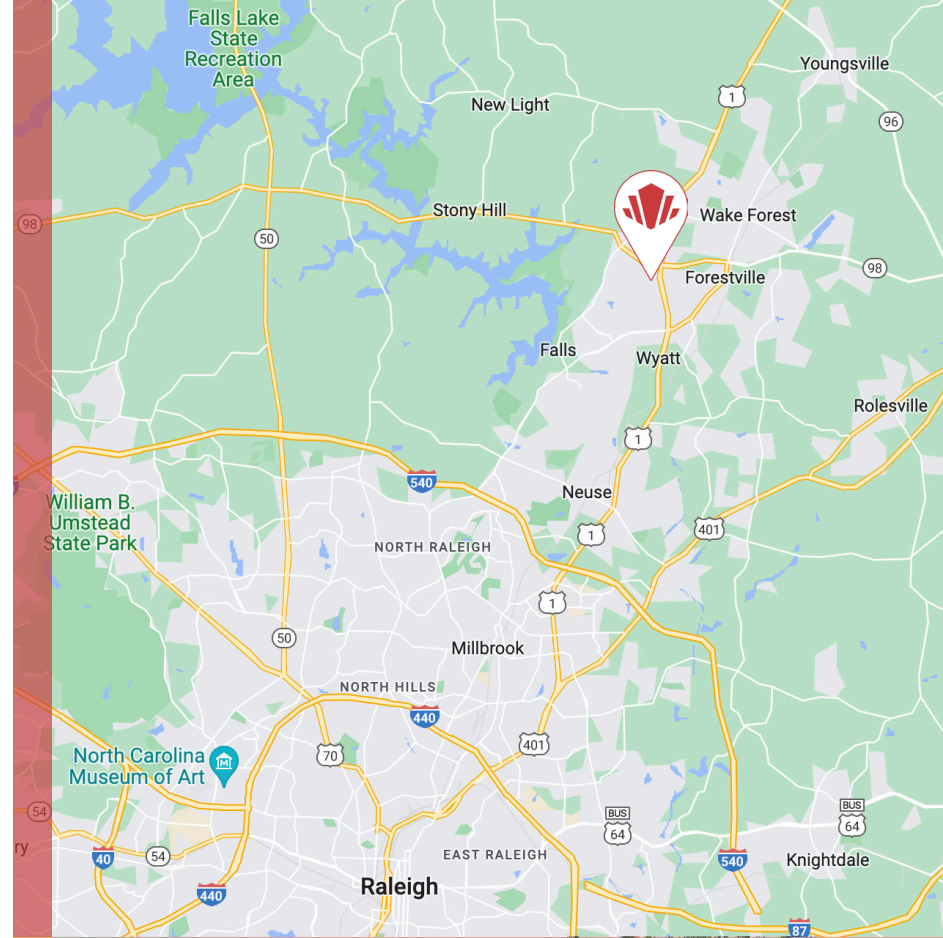
919.523.4200

[bmuller@capitalassociates.com](mailto:bmuller@capitalassociates.com)

**WES JOHNSON**

919.422.4853

[wjohnson@capitalassociates.com](mailto:wjohnson@capitalassociates.com)



2 MILES FROM  
REX HEALTHCARE OF  
WAKEFIELD