

# OFFICE SUITE FOR LEASE

## 60-72 SHREWSBURY STREET

*Worcester, Massachusetts*



**JAMES COZZA**

508.450.4271

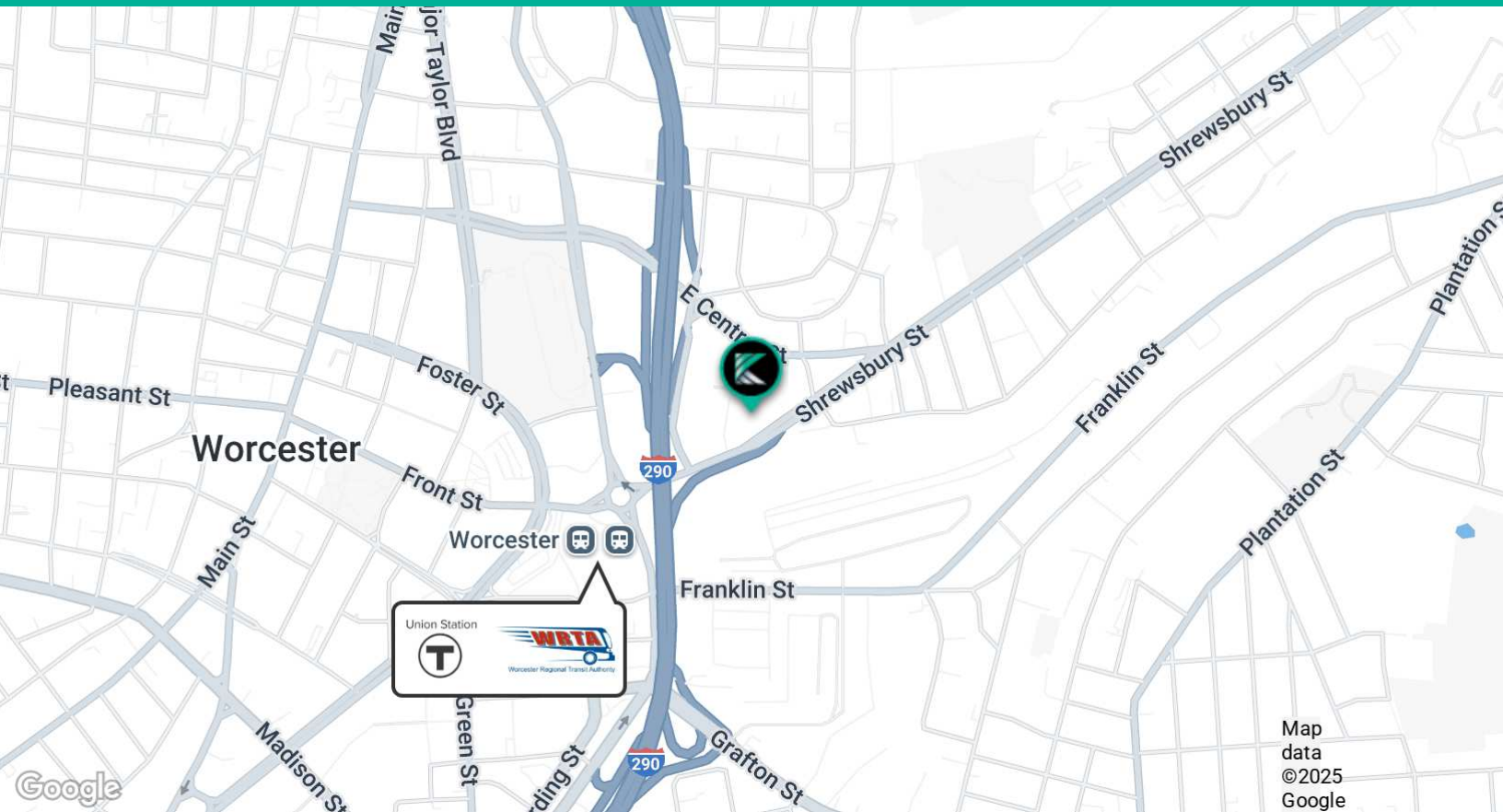
cozza@kelleher-sadowsky.com

**PAUL MATT**

508.846.8800

pmatt@kelleher-sadowsky.com





PROPERTY DESCRIPTION

Kelleher & Sadowsky Associates is pleased to present up to 9,500 square feet of professional office space available in the heart of Worcester, MA. Currently offering 6,200 square feet with the ability to expand, this opportunity provides flexibility for tenants seeking a premier Shrewsbury Street presence with exterior building signage.

Located just steps from Union Station and the MBTA commuter rail, the property offers unmatched convenience for both employees and clients. Positioned along Worcester’s vibrant Restaurant Row, the building is surrounded by established amenities and destinations including Carbonneau Bridal & Formal, Volturmo Pizza Napoletana, and Wormtown Brewery, creating an energetic and dynamic environment for business and lifestyle.

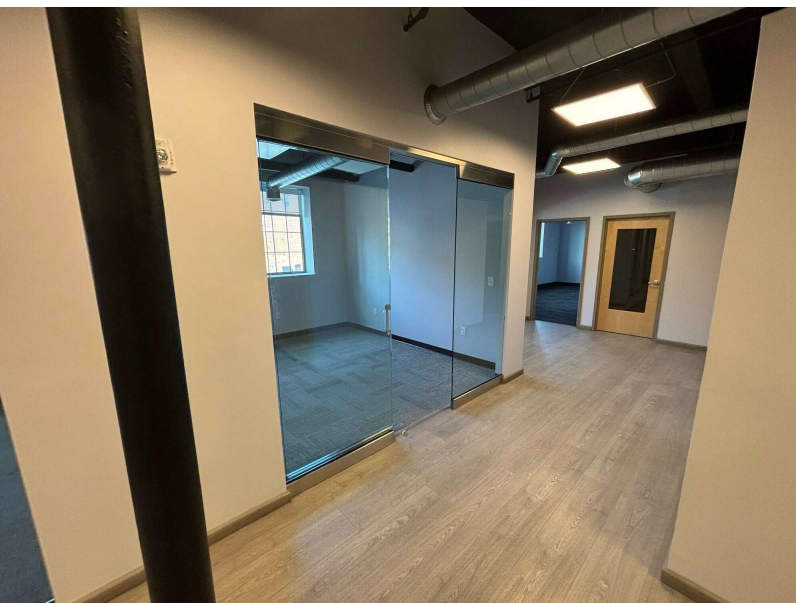
With direct access to I-290, I-190, Route 146, and the Massachusetts Turnpike, commuting is seamless whether by car or public transit. The adaptable layout allows for customized build-out to suit a variety of professional users, making this space an ideal choice for law firms, accounting practices, marketing agencies, tech companies, and other professional service firms seeking a highly visible Worcester location.

OFFERING SUMMARY

Available SF:	6,200 SF - 9,500 SF
Private Offices:	±15
Conference Room	One (1)
Training Room	One (1)
In-suite Amenities:	Full kitchen & break room
Build Out	Professional Office
Elevator	Passenger elevator
Lease Rate:	Negotiable

DEMOGRAPHICS	3 MILES	5 MILES	10 MILES
Total Households	65,834	101,723	159,451
Total Population	171,363	262,912	416,381
Average HH Income	\$86,738	\$100,534	\$125,565







# FOR LEASE • 60-72 SHREWSBURY STREET

Restaurant Row



Map data  
©2025  
Google