

NEWBURGH, NY - LAND

17K AT RACQUET ROAD, NEWBURGH, NY 12250



OFFERING SUMMARY

Sale Price:	Call for Details
Available SF:	3.5 Acres
Lease Rate:	Call for Details
Price / SF:	-

PROPERTY OVERVIEW

Available Immediately: Land for sale, ground lease, or build to suit located in Newburgh, NY.

NEIGHBORING TENANTS



PROPERTY HIGHLIGHTS

- Available Immediately: 3.5 Acres
- Excellent Exposure:
- Heavy Traffic Area
- Corner Property With Double Road Frontage
- Rapid Growth Area – Splendid Location for Office, Hotel, Self-Storage, QSR, Assisted Living
- Sale, Ground Lease Or Build To Suit
- 1/2 Mile From Interstate 84 and near Stewart Airport

FOR MORE INFORMATION CONTACT:

SCOTT MILICH

201.703.9700 x139
smilich@thegoldsteingroup.com

Licensed Real Estate Broker | 45 EISENHOWER DRIVE | SUITE 246 | PARAMUS, NJ 07652

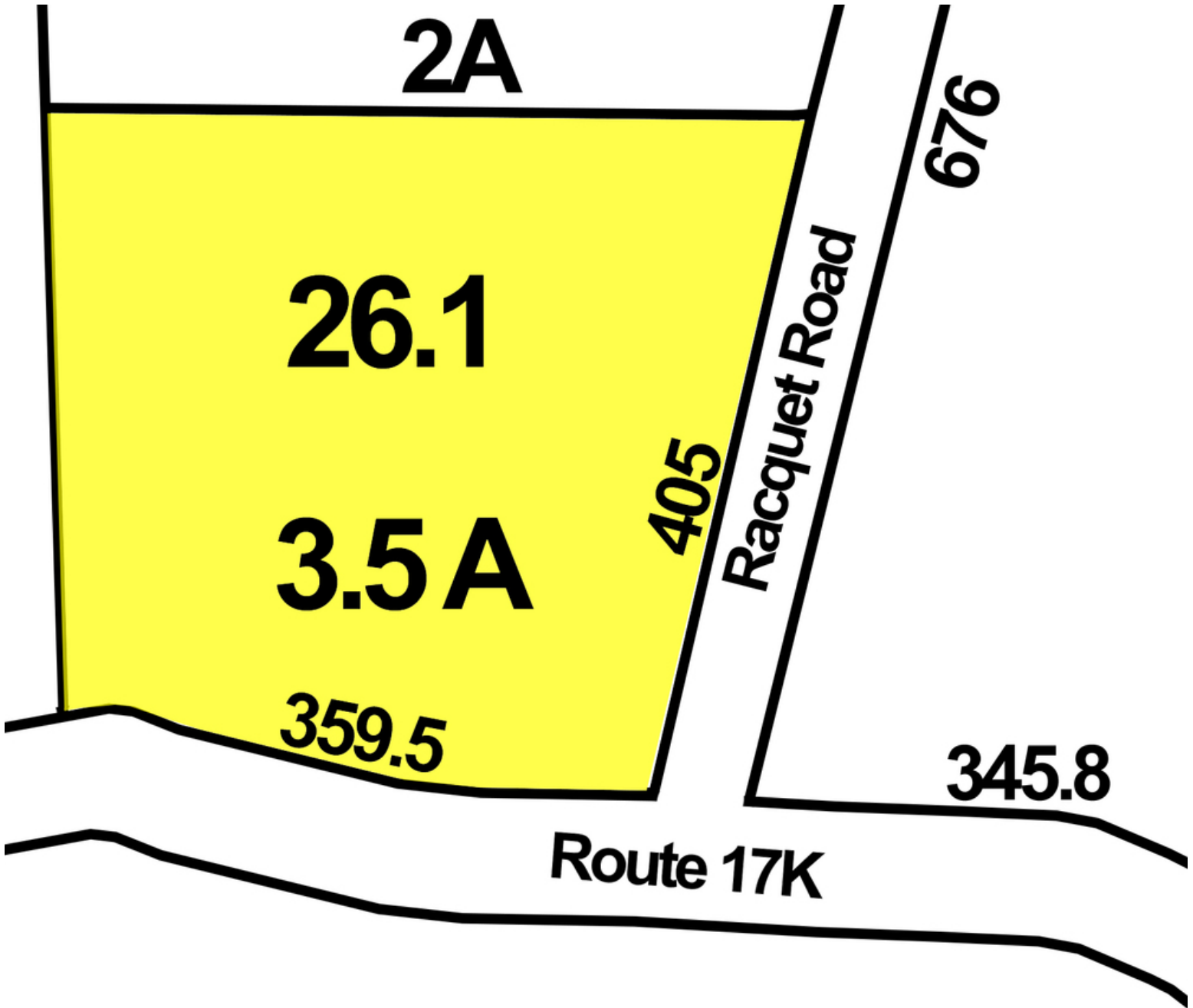
All information is from sources deemed reliable and is submitted subject to errors, omissions, change of price, terms, rental, prior sale and withdrawal without notice.



THEGOLDSTEINGROUP.COM

NEWBURGH, NY - LAND

17K AT RACQUET ROAD, NEWBURGH, NY 12250



Site Map: 17K at Racquet Road, Newburgh, NY

FOR MORE INFORMATION CONTACT:

SCOTT MILICH
201.703.9700 x139
smilich@thegoldsteingroup.com

Licensed Real Estate Broker | 45 EISENHOWER DRIVE | SUITE 246 | PARAMUS, NJ 07652

All information is from sources deemed reliable and is submitted subject to errors, omissions, change of price, terms, rental, prior sale and withdrawal without notice.



THEGOLDSTEINGROUP.COM

NEWBURGH, NY - LAND

17K AT RACQUET ROAD, NEWBURGH, NY 12250



FOR MORE INFORMATION CONTACT:

SCOTT MILICH
201.703.9700 x139
smilich@thegoldsteingroup.com

Licensed Real Estate Broker | 45 EISENHOWER DRIVE | SUITE 246 | PARAMUS, NJ 07652

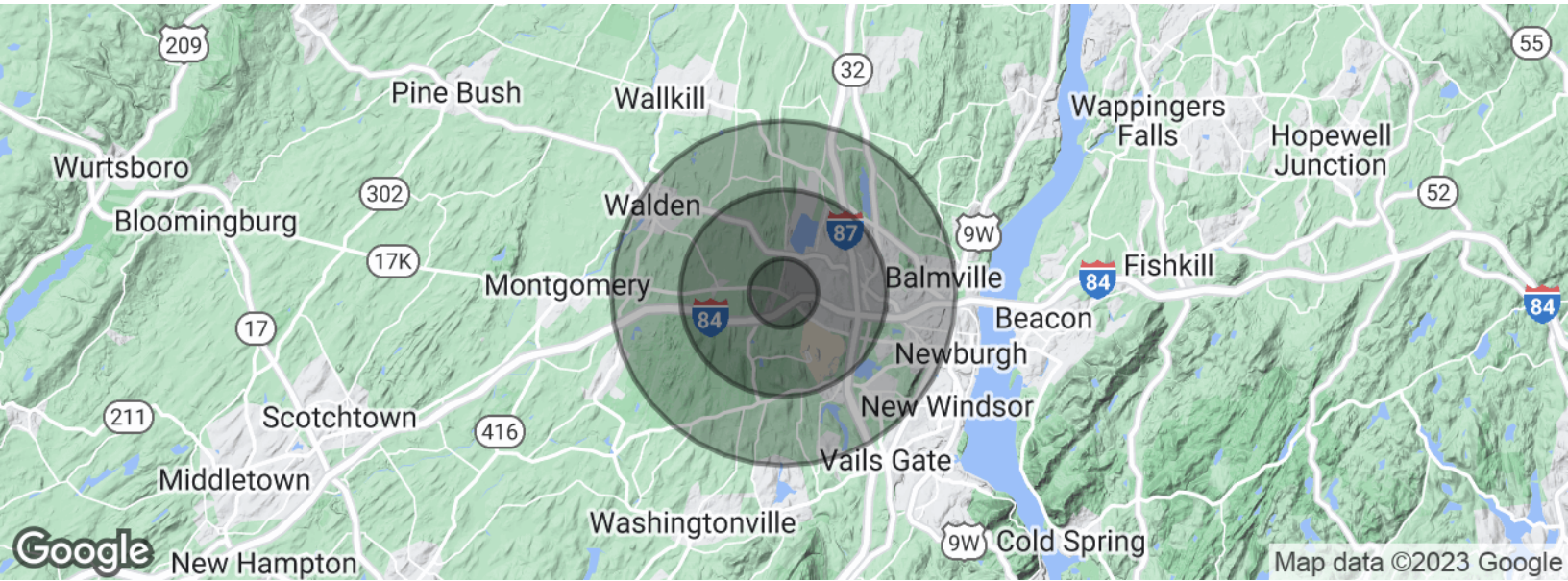
All information is from sources deemed reliable and is submitted subject to errors, omissions, change of price, terms, rental, prior sale and withdrawal without notice.



THEGOLDSTEINGROUP.COM

NEWBURGH, NY - LAND

17K AT RACQUET ROAD, NEWBURGH, NY 12250



POPULATION	1 MILE	3 MILES	5 MILES
Total population	2,915	16,004	40,663
Median age	43.2	41.4	39.9
Median age (Male)	42.8	41.1	38.9
Median age (Female)	43.7	41.7	40.6
HOUSEHOLDS & INCOME	1 MILE	3 MILES	5 MILES
Total households	1,043	5,534	14,219
# of persons per HH	2.8	2.9	2.9
Average HH income	\$96,125	\$93,922	\$86,950
Average house value	\$390,857	\$372,678	\$335,513

* Demographic data derived from 2020 ACS - US Census

FOR MORE INFORMATION CONTACT:

SCOTT MILICH
201.703.9700 x139
smilich@thegoldsteingroup.com



Licensed Real Estate Broker | 45 EISENHOWER DRIVE | SUITE 246 | PARAMUS, NJ 07652

THEGOLDSTEINGROUP.COM

All information is from sources deemed reliable and is submitted subject to errors, omissions, change of price, terms, rental, prior sale and withdrawal without notice.