



## **312 E Illinois Ave**

312 E Illinois Ave, Midland, TX 79701

**Laura Ferguson**

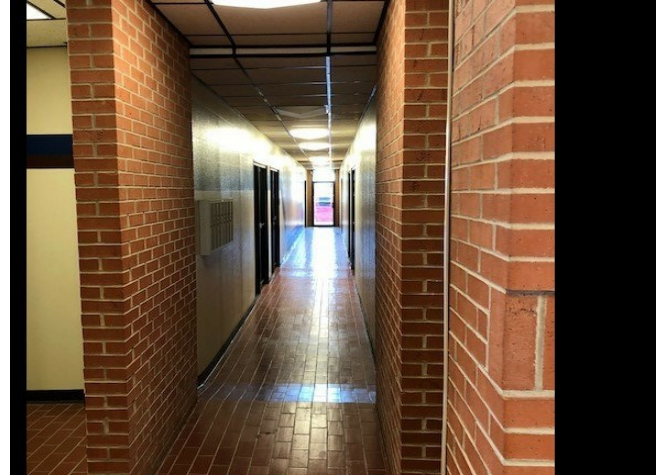
Midland Yacht Club  
312 E Illinois Ave, Midland, TX 79701  
[Lferguson@patchenergyllc.com](mailto:Lferguson@patchenergyllc.com)  
(432) 684-7995



# 312 E Illinois Ave

\$19.28 - \$28.94 /SF/YR

- All suites are outfitted with plug-in ready wi-fi and phone capabilities, and covered parking included in rent.



Rental Rate:	\$19.28 - \$28.94 /SF/YR
Property Type:	Office
Building Class:	B
Rentable Building Area:	7,500 SF
Year Built:	1981
Walk Score ®:	66 (Somewhat Walkable)
Rental Rate Mo:	\$2.41 /SF/MO

### 1st Floor Ste 3

Space Available	456 SF	\$1100 per month
Rental Rate	\$28.94 /SF/YR	
Date Available	Now	
Service Type	Full Service	
Built Out As	Professional Services	
Space Type	Relet	
Space Use	Office	
Lease Term	1 - 3 Years	

1

### 1st Floor Ste 4

Space Available	943 SF	\$1700 per month
Rental Rate	\$21.63 /SF/YR	
Date Available	Now	
Service Type	Full Service	
Built Out As	Professional Services	
Space Type	Relet	
Space Use	Office	
Lease Term	1 - 3 Years	

2

### 1st Floor Ste 6

Space Available	840 SF	\$1350 per month
Rental Rate	\$19.28 /SF/YR	
Date Available	Now	
Service Type	Full Service	
Built Out As	Professional Services	
Space Type	Relet	
Space Use	Office	
Lease Term	1 - 3 Years	

3

### 1st Floor Ste 7

Space Available	609 SF	\$1350 per month
Rental Rate	\$23.64 /SF/YR	
Date Available	Now	
Service Type	Full Service	
Built Out As	Professional Services	
Space Type	Relet	
Space Use	Office	
Lease Term	1 - 3 Years	

4

---

## Major Tenant Information

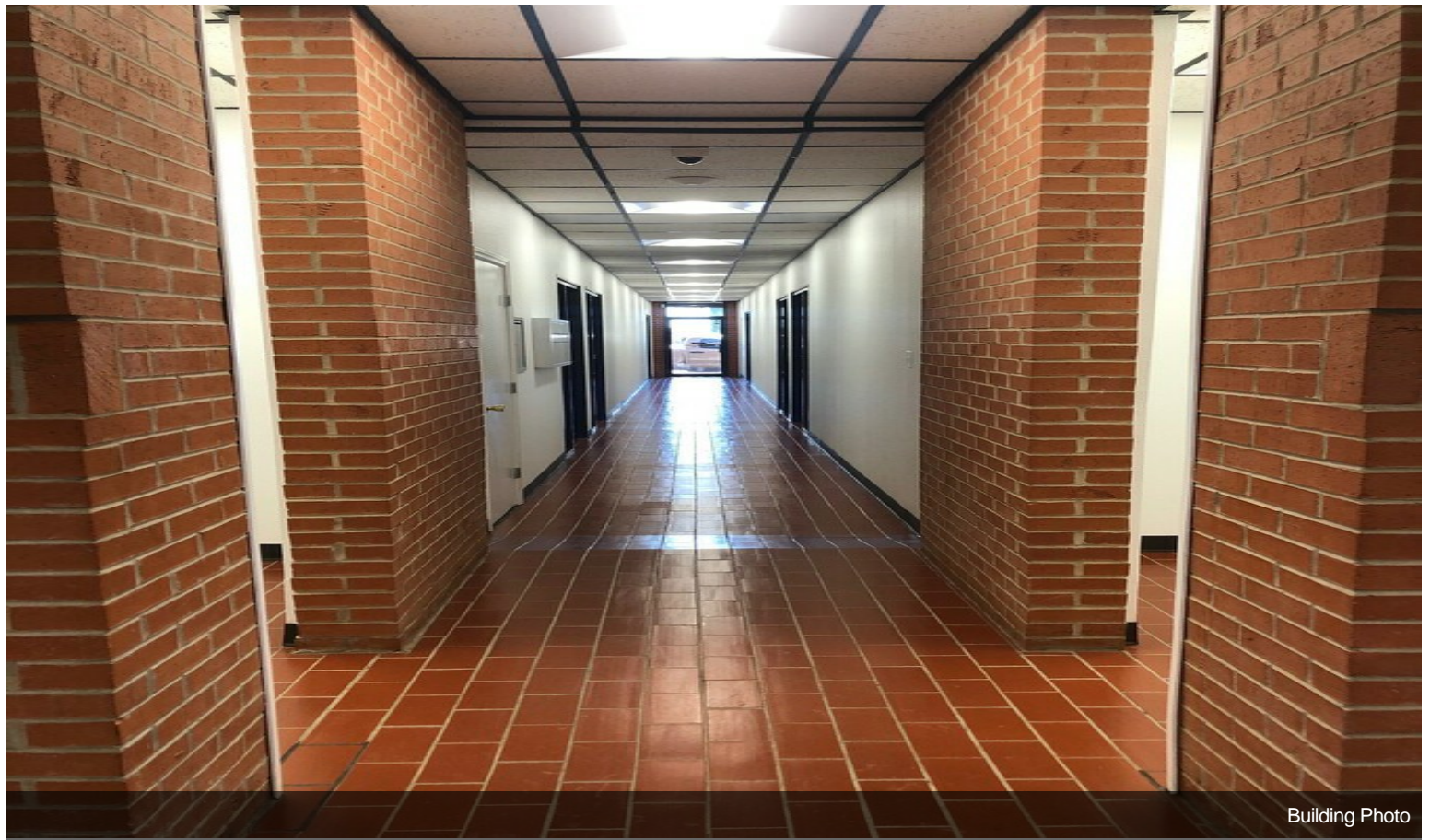
---

Tenant	SF Occupied	Lease Expired
Candlewood Resources, LLC	-	
McPat Oil Company, LLC	-	
Patch Energy LLC	-	



**312 E Illinois Ave, Midland, TX 79701**

# Property Photos



Building Photo

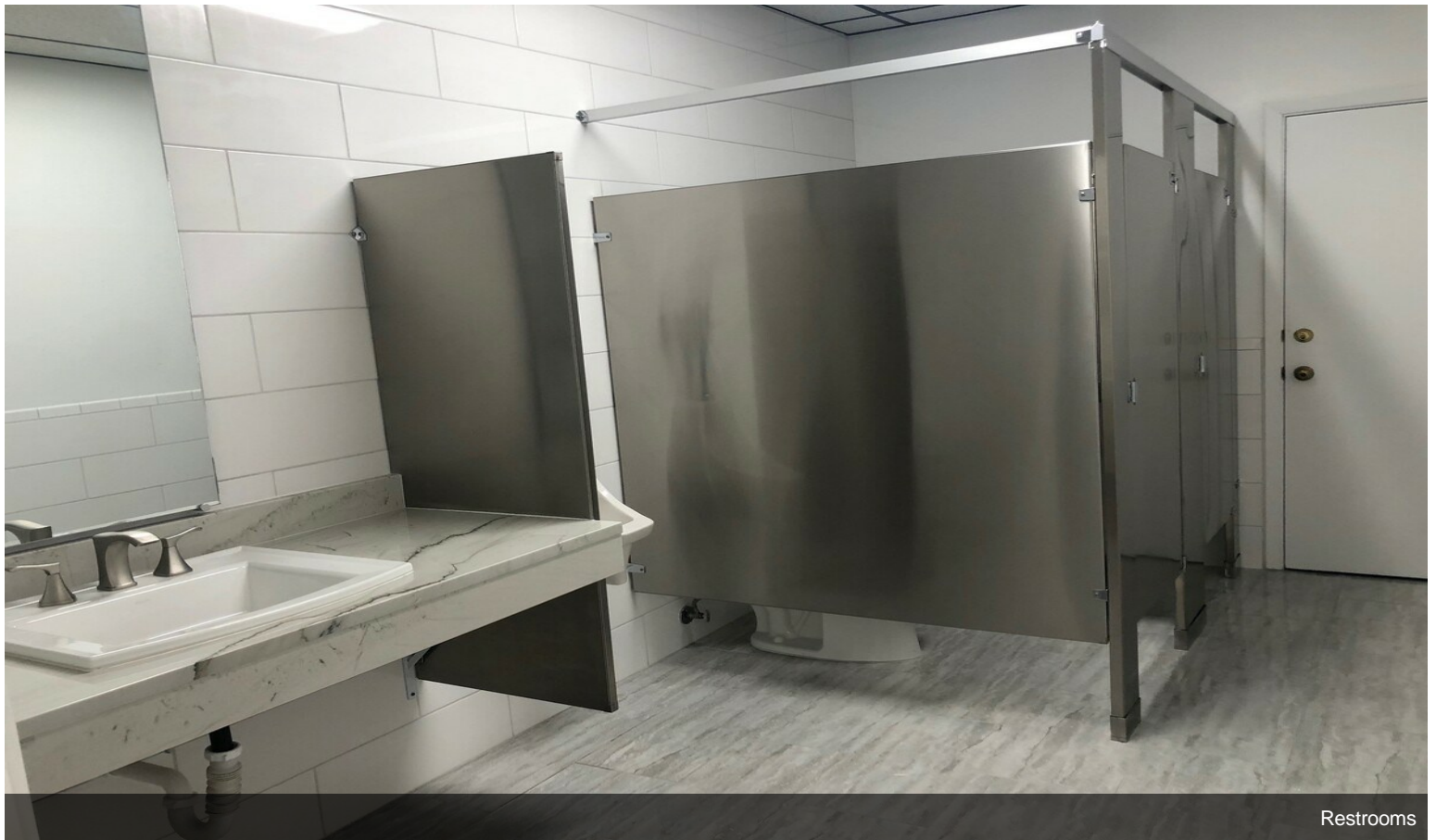


Lobby

## Property Photos

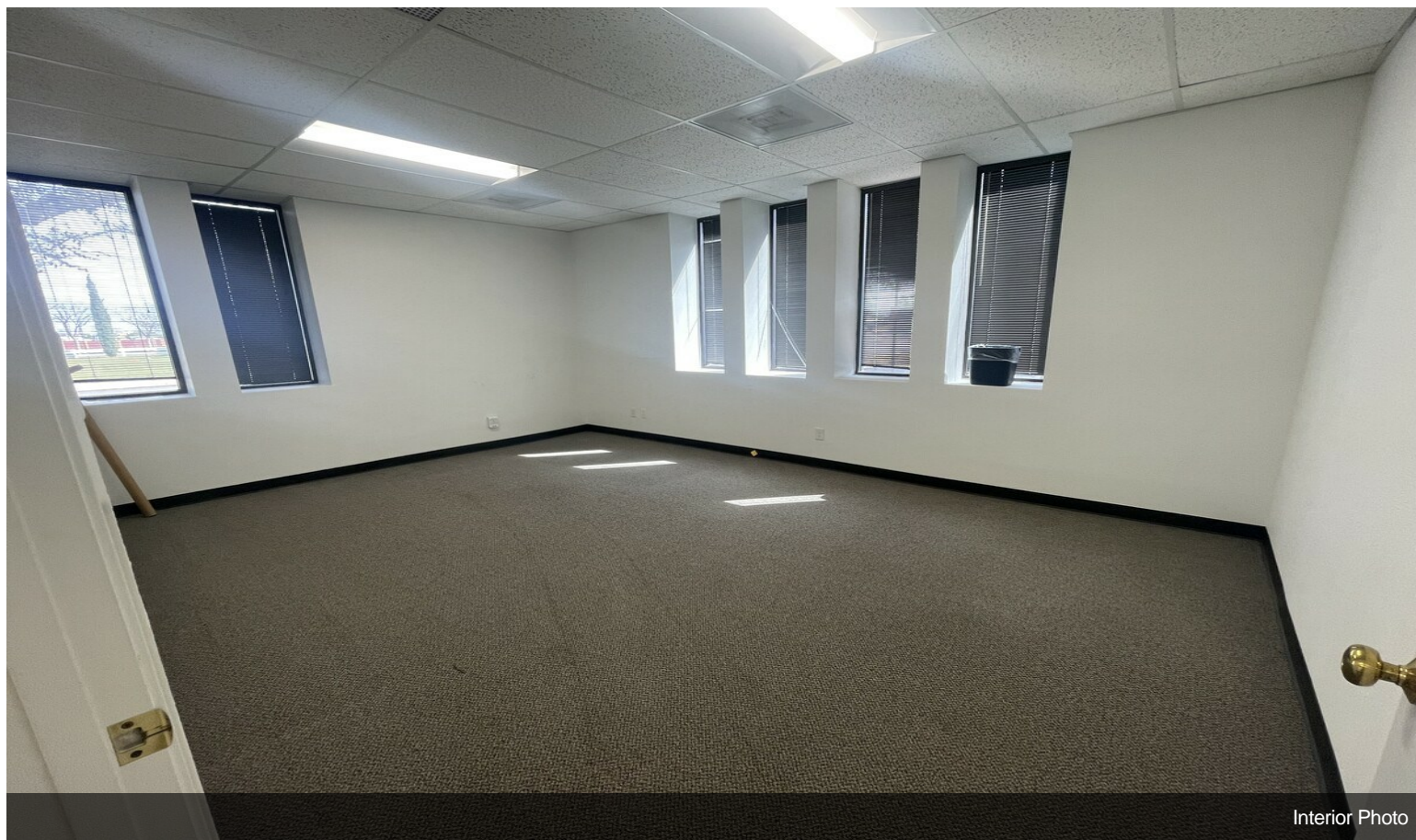


Building Photo

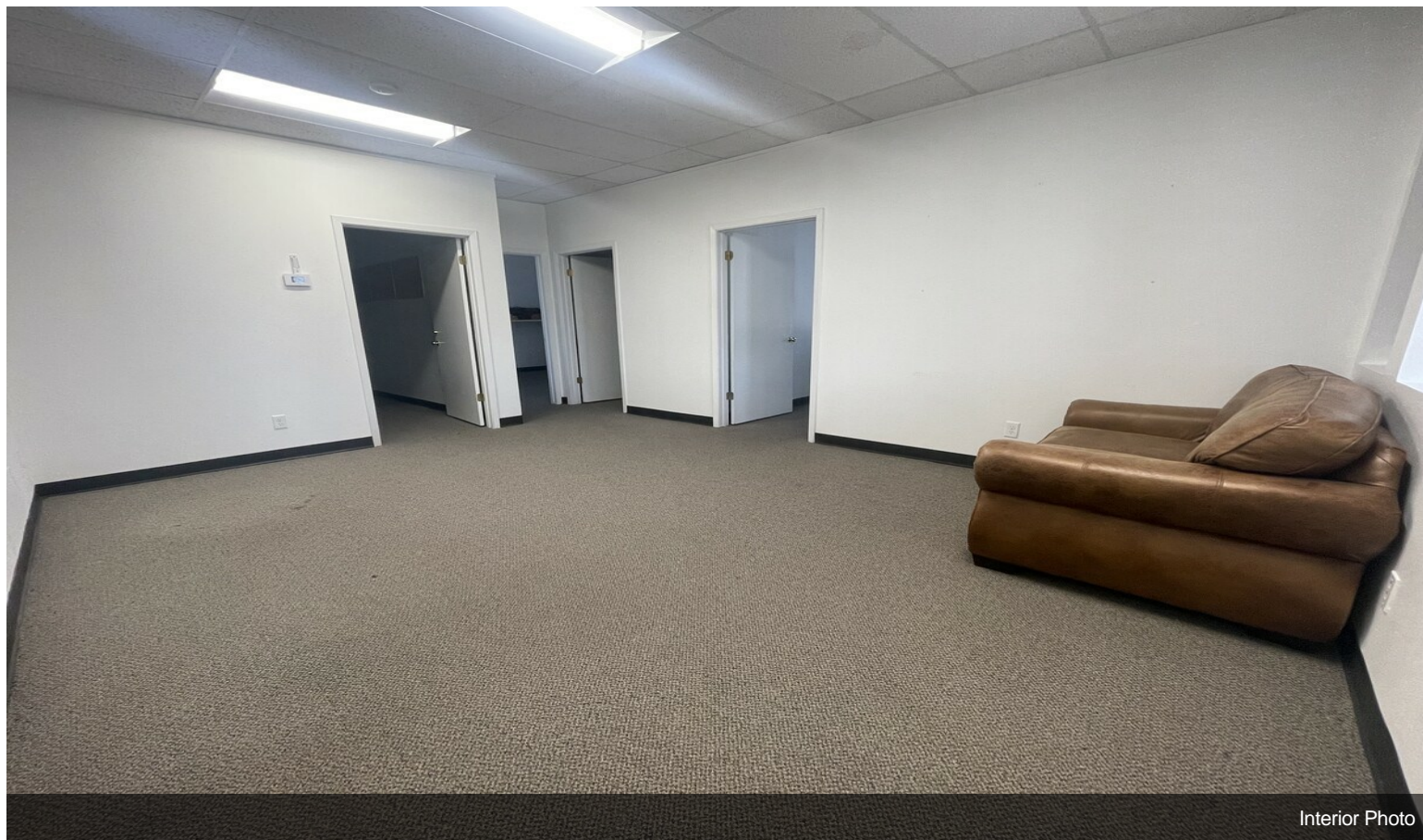


Restrooms

# Property Photos



Interior Photo



Interior Photo



# Property Photos



Conference/Breakroom area in Suite 4

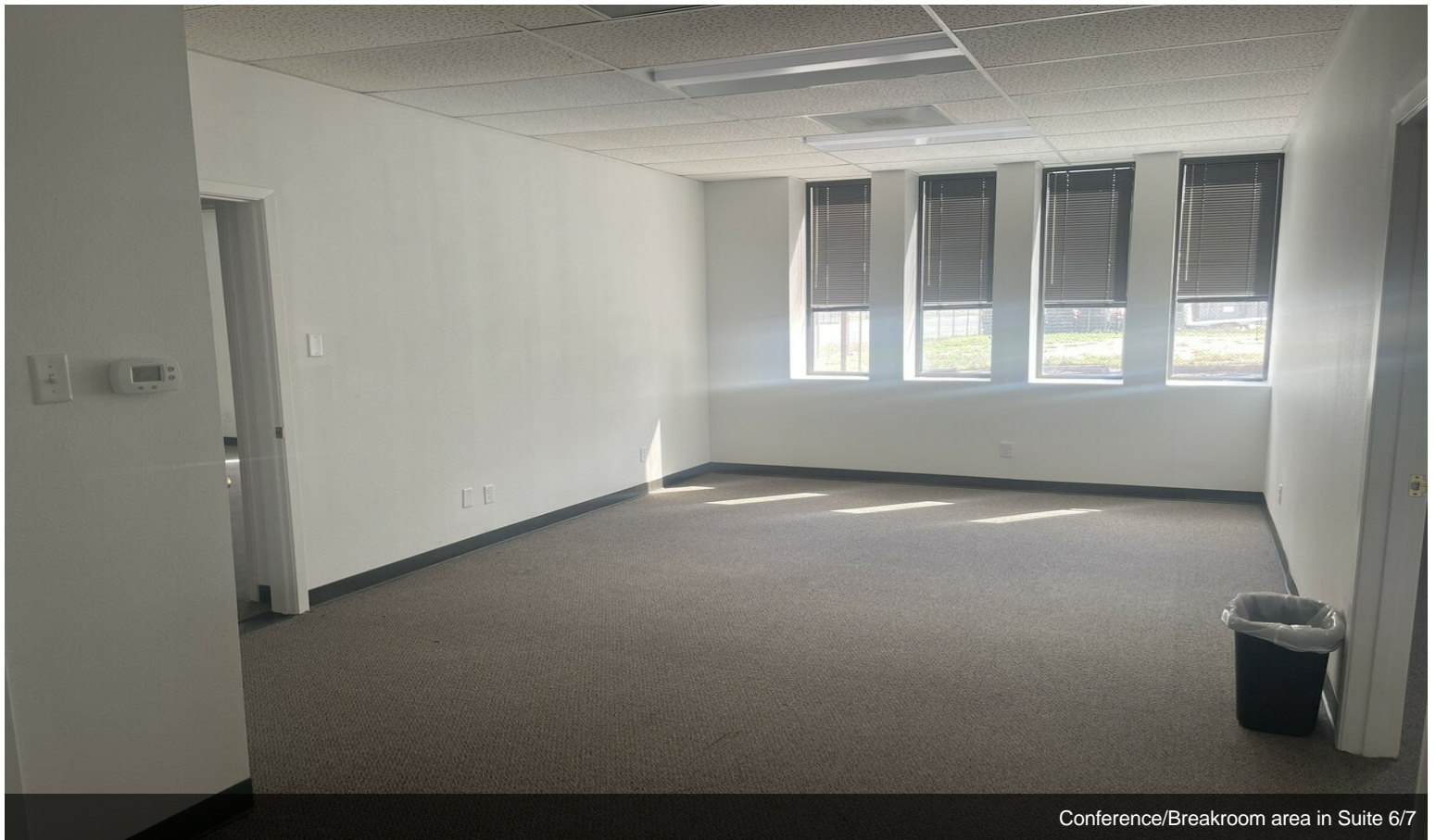


Building Photo

# Property Photos



Conference/Breakroom Area in Suite 6/7



Conference/Breakroom area in Suite 6/7

## Property Photos



Building Photo