



# For Lease

1680 Park Centre Place  
Nampa, ID 83651



*Available June 2026*



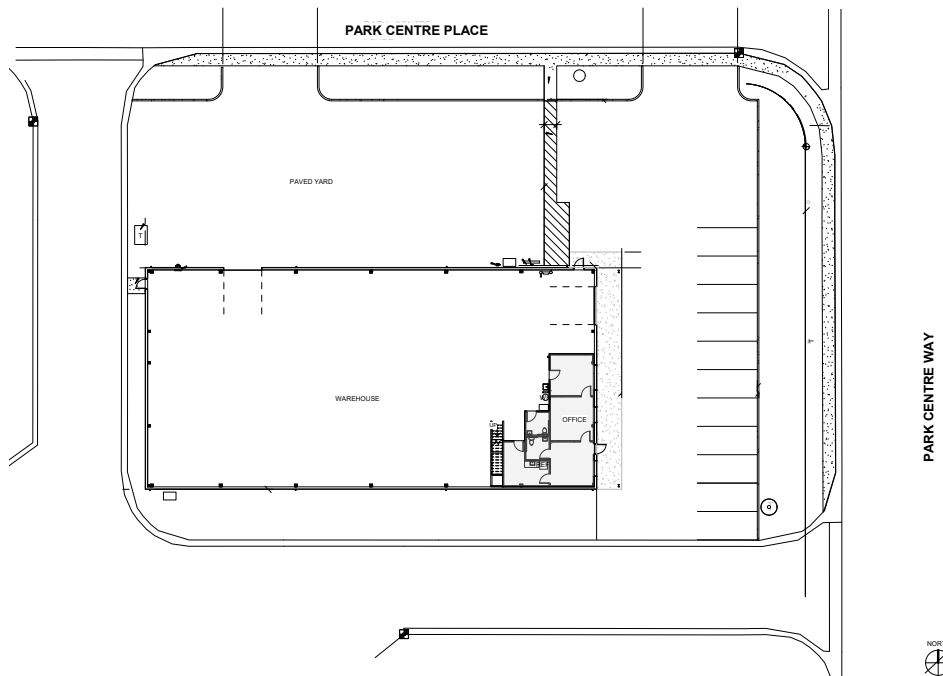
Accelerating success.

**Bryant Jones**  
+1 208 472 1663  
bryant.jones@colliers.com

# Property Overview

Property Type	Industrial
Total Building Size	10,922 SF (see right for breakdown)
Land Size	0.86 Acres
Yard	~8,000 SF paved & fenced yard
Zoning	IP
Year Built	2022
Construction Type	Metal
Ceiling Height	18 ft clear height
Grade Level Drive-In Doors	2 - 12' x 14' Doors
Heating & Cooling	Warehouse and offices temperature controlled
Lighting	LED and skylights
Power	3 Phase 400 amps

## Site Plan



## Space Available

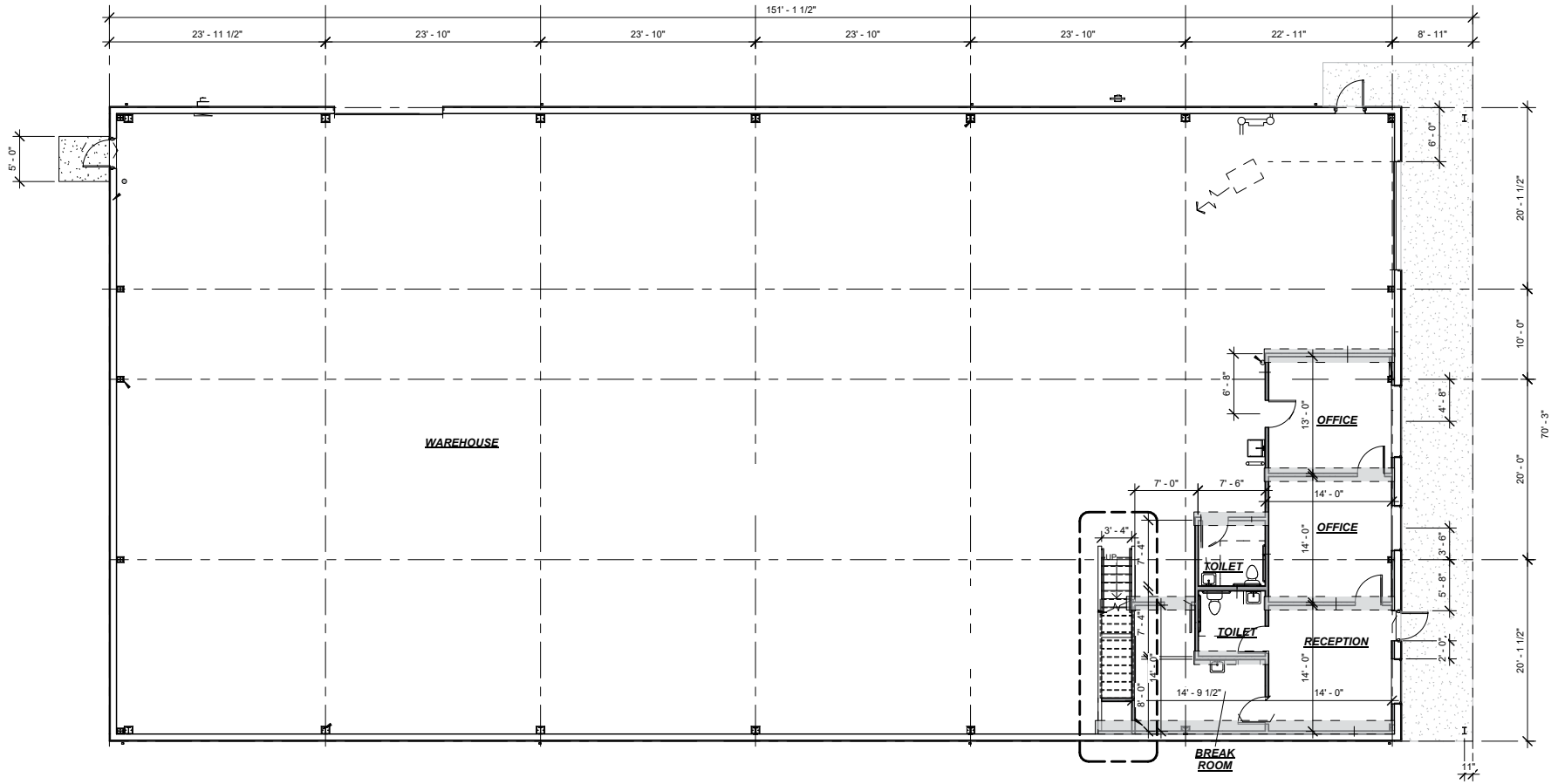
Suite	Size	Rate
Warehouse	9,132 SF	
Office	895 SF	
Mezzanine	895 SF	
Fenced, Paved Yard	~8,000 SF	
<b>Total</b>	<b>10,922 SF</b>	<b>\$11,250 NNN</b>

NNN fees ± \$0.20 PSF (\$2,185)

## Key Highlights

- Available June 2026
- Right off two freeway entrances
- Located in industrial hub area
- 2 Restrooms
- HVAC in warehouse
- Paved & fenced yard
- Fully sprinkled

# Floor Plan



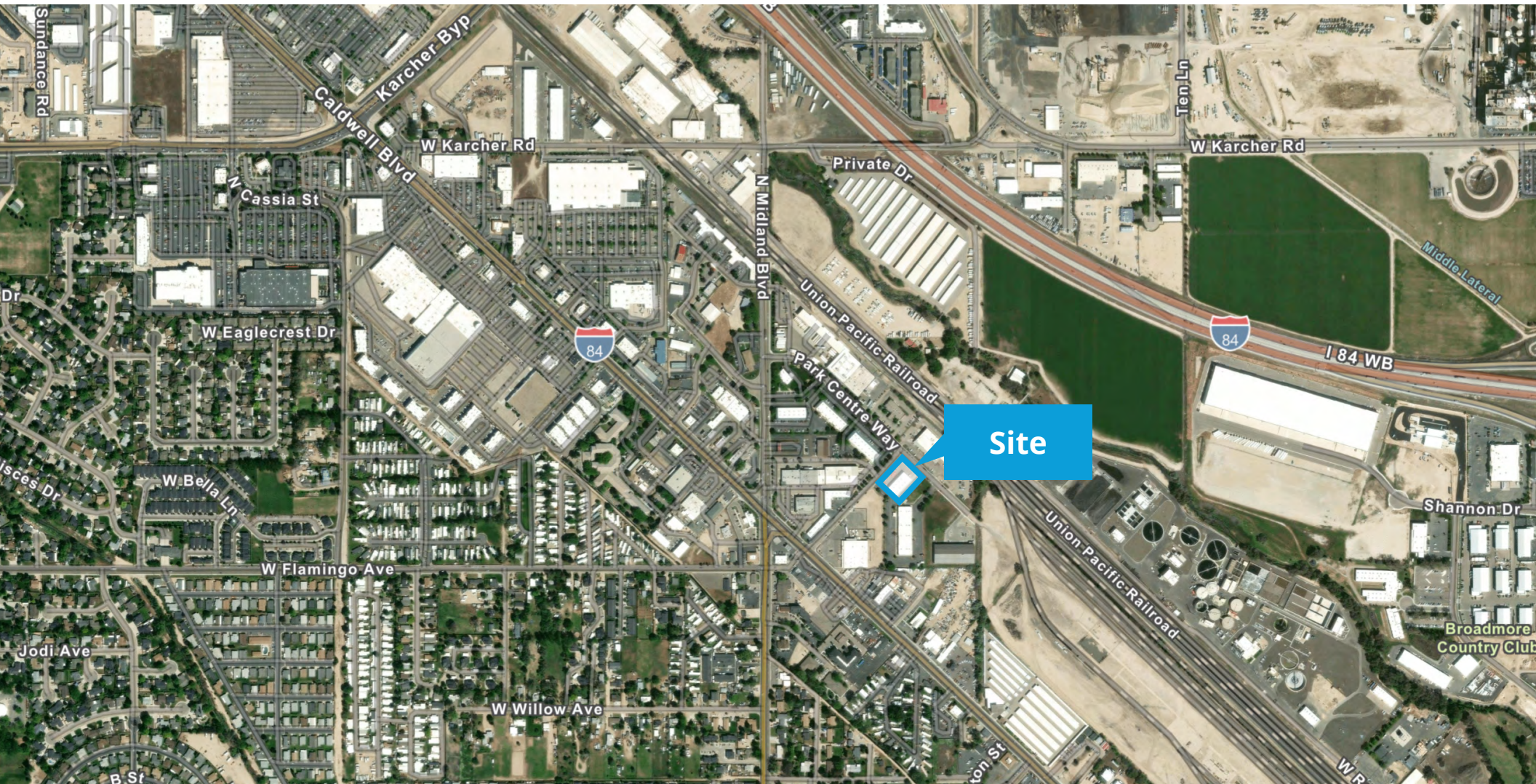
# Property Gallery



# Location

 [Google Map](#)

 [Street View](#)



5700 E Franklin Road, Suite 100  
Nampa, Idaho 83687  
+1 208 472 1660  
[colliers.com/idaho](https://colliers.com/idaho)

This document has been prepared by Colliers for advertising and general information only. Colliers makes no guarantees, representations or warranties of any kind, expressed or implied, regarding the information including, but not limited to, warranties of content, accuracy and reliability. Any interested party should undertake their own inquiries as to the accuracy of the information. Colliers excludes unequivocally all inferred or implied terms, conditions and warranties arising out of this document and excludes all liability for loss and damages arising there from. This publication is the copyrighted property of Colliers and/or its licensor(s). © 2026. All rights reserved. This communication is not intended to cause or induce breach of an existing listing agreement. Colliers Treasure Valley, LLC.