

112-8028 128 Street Surrey, BC

Highlights

- ▶ 1,082 SF Ground Floor Retail showroom
- ▶ Two Private Offices
- ▶ Reception Area
- ▶ Kitchenette
- ▶ Ample Parking

Gary Haukeland*
Senior Vice President
604 691 6693
ghaukeland@naicommercial.ca
*Personal Real Estate Corporation

J-D Murray
Senior Associate
604 691 6664
jdmurray@naicommercial.ca

NAI Commercial
1075 W Georgia St, Suite 1300
Vancouver, BC V6E 3C9
+1 604 683 7535
naicommercial.ca



112-8028 128 Street
Surrey, BC

The Opportunity

The property represents an opportunity to purchase a 1,082 SF ground floor retail strata showroom constructed in 2016, with two private offices, reception area, kitchenette, and bathroom. The strata complex, known as Little India Plaza, is improved with two, two-storey buildings and three single storey buildings containing a total of 73 strata units. The monthly strata fees are approximately \$316.33. The property is zoned CD (Comprehensive Development) with general retail use and has ample parking. The City of Surrey's Official Community Plan designates the existing use for the property as "Mixed Employment."

Location

The property is located on the northeast corner of 128th Street and 80th Avenue in The City of Surrey's West Newton/Queen Mary Park area. The property has easy access to either 80th Avenue or 128th Street, all amenities, the rest of the Greater Vancouver and the Lower Mainland.

Gary Haukeland*
Senior Vice President
604 691 6693
ghaukeland@naicommercial.ca

*Personal Real Estate Corporation

J-D Murray
Senior Associate
604 691 6664
jdmurray@naicommercial.ca

Property Details

Civic Address

112 8028 128th Street
Surrey, BC V3W 4E94

Legal Description

Strata Lot 13 Section 29 Township 2
New Westminster District Strata Plan
EPS3657
Together With An Interest In The
Common Property In Proportion To The
Unit Entitlement Of The Strata Lot As
Shown On Form V

PID

029-888-964

Property Taxes

\$13,103.10 (2025)

Zoning & OCP Designation

CD (Comprehensive Development -
18142)

Price

\$1,550,000

NAI Commercial

NAI Commercial

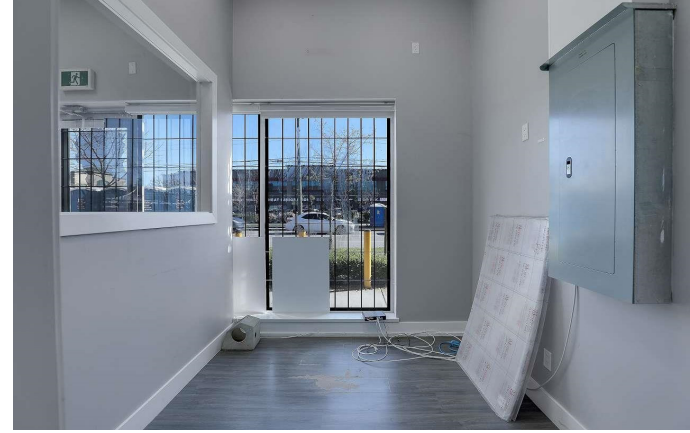
1075 W Georgia St, Suite 1300

Vancouver, BC V6E 3C9

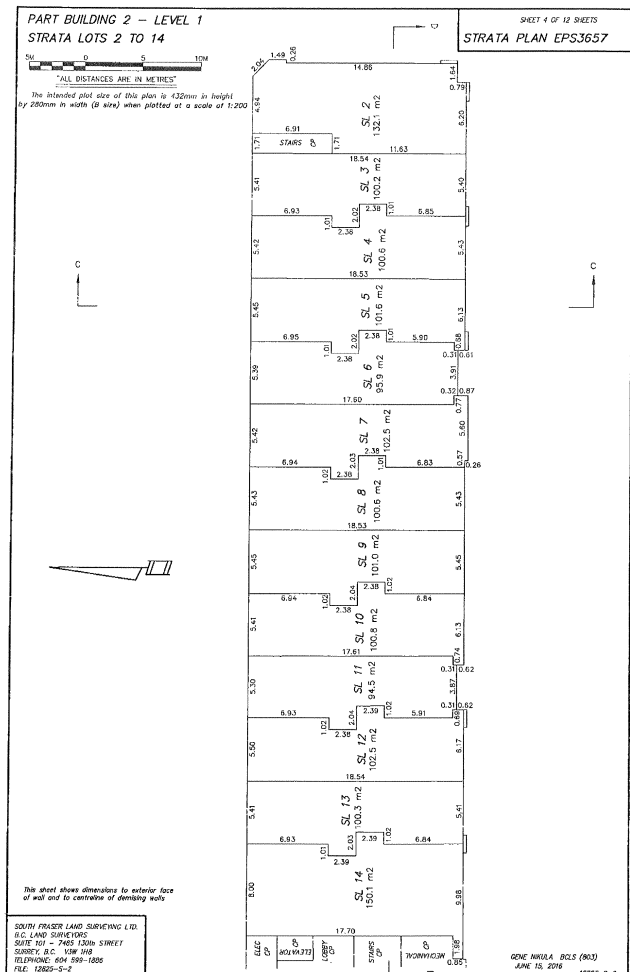
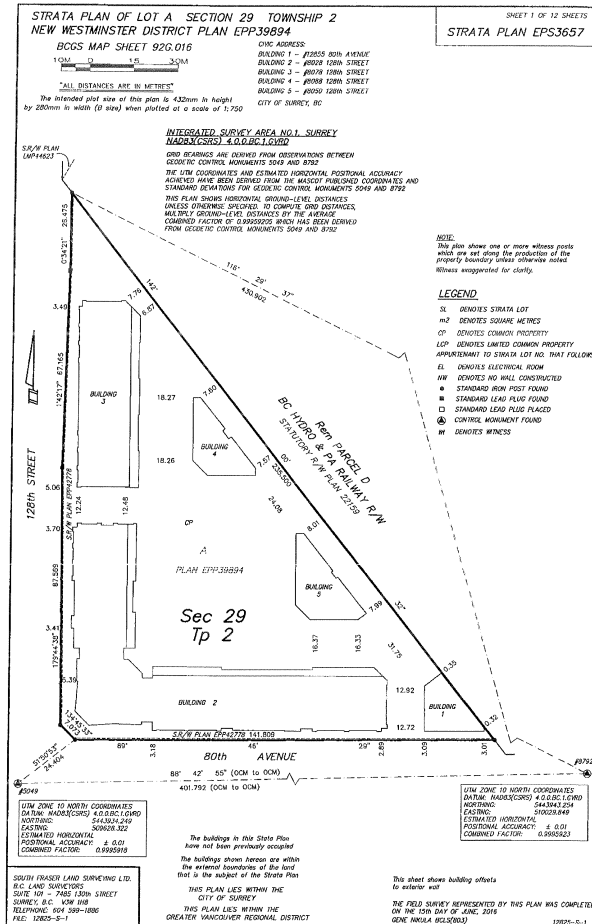
+1 604 683 7535

naicommercial.ca

No warranty or representation, express or implied, is made as to the accuracy of the information contained herein, and the same is submitted subject to errors, omissions, change of price, rental or other conditions, prior sale, lease or financing, or withdrawal without notice, and of any special listing conditions imposed by our principals no warranties or representations are made as to the condition of the property or any hazards contained therein are any to be implied. Aerial image(s) courtesy of Google, Landsat/Copernicus



Floor Plan





Gary Haukeland*, Senior Vice President
604 691 6693 | ghaukeland@naicommercial.ca
*Personal Real Estate Corporation

J-D Murray, Senior Associate
604 691 6664 | jdmurray@naicommercial.ca

NAI Commercial

No warranty or representation, express or implied, is made as to the accuracy of the information contained herein, and the same is submitted subject to errors, omissions, change of price, rental or other conditions, prior sale, lease or financing, or withdrawal without notice, and of any special listing conditions imposed by our principals no warranties or representations are made as to the condition of the property or any hazards contained therein are any to be implied. Aerial image(s) courtesy of Google, Landsat/Copernicus

NAI Commercial
1075 W Georgia St, Suite 1300
Vancouver, BC V6E 3C9
+1 604 683 7535
naicommercial.ca