



# J. Gruber Properties

Representing the Best of Texas



## FOR SALE

56 ± Acres, St. Hedwig, Texas

Tract 1: 15.254 Acres

Tract 2: 16.871 Acres

Tract 3: 13.756 Acres

Tract 4: 10.100 Acres

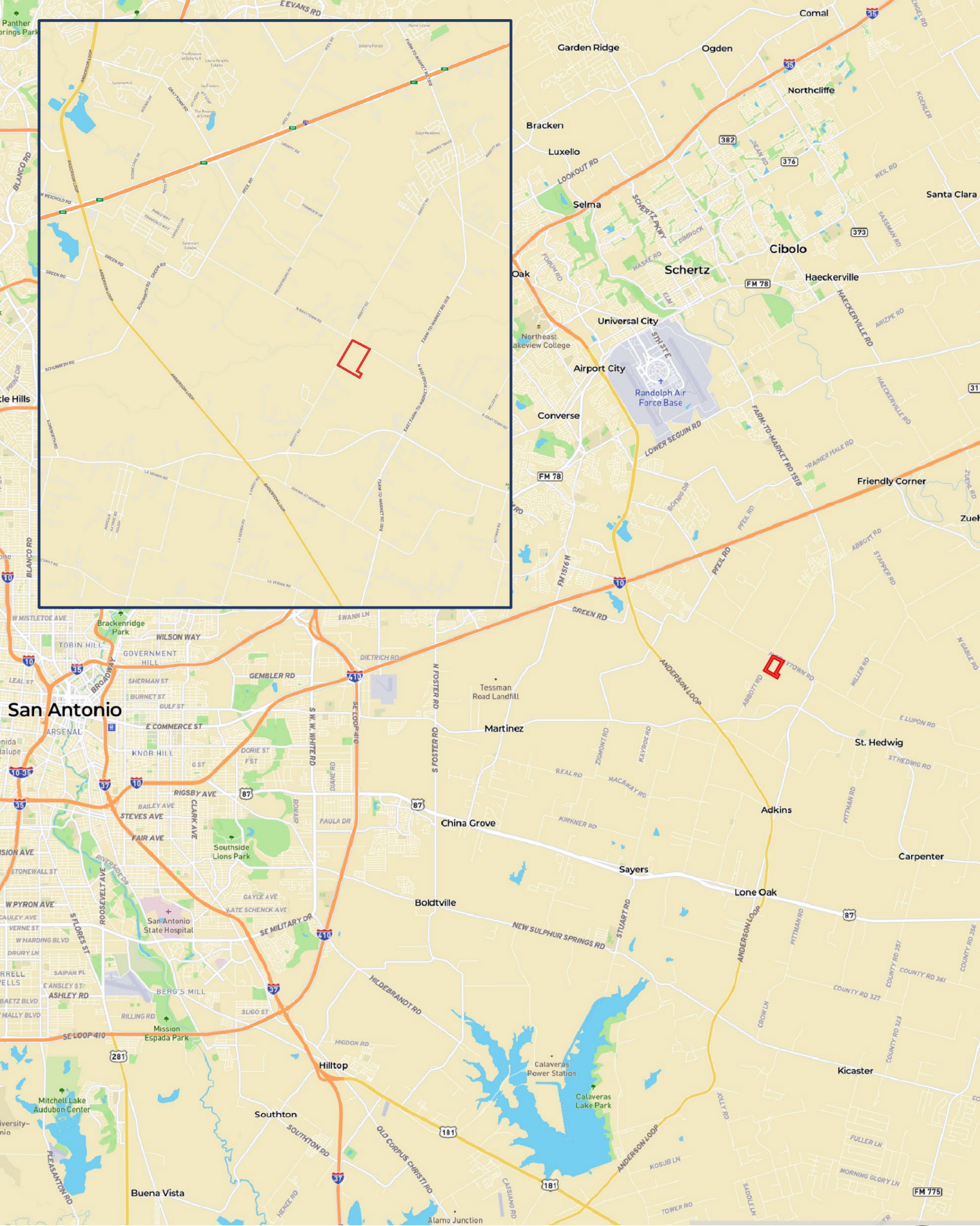


## PROPERTY FEATURES

High Growth Area

East Central ISD

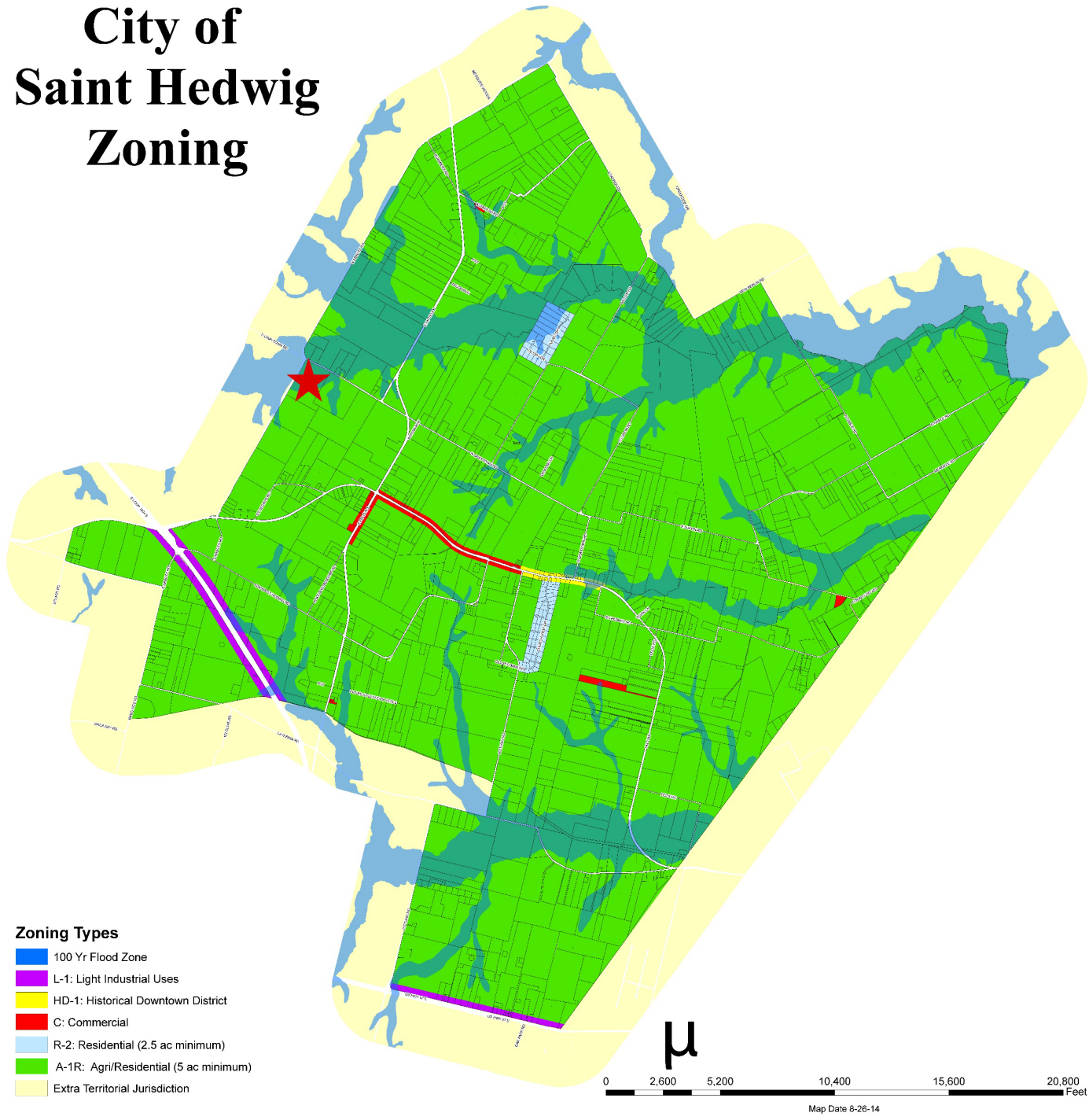
Frontage on Abbott and N Graytown Rd



Street View



# City of Saint Hedwig Zoning



## PROPERTY FACTS

Land Size: 56 ± acres; 4 Separate Tracts

Parcel Number: 328782

Road Frontage: Abbott and N Graytown Road

Property use Description: Potential Development

St. Hedwig is located in one of the fastest growth areas of Bexar County. With easy access to San Antonio and the surrounding areas, great school districts, and over 1,800 feet of frontage on Abbott Rd and 1,200 feet of frontage on N Graytown Rd, makes the property an ideal investment. This beautiful 56 ± acres is mostly level with higher elevation towards the southeast corner.



Abbott Road



N Graytown Road





West



North



