

# Shawnee West Medical Condo

21624 Midland Dr,  
Shawnee, KS 66218

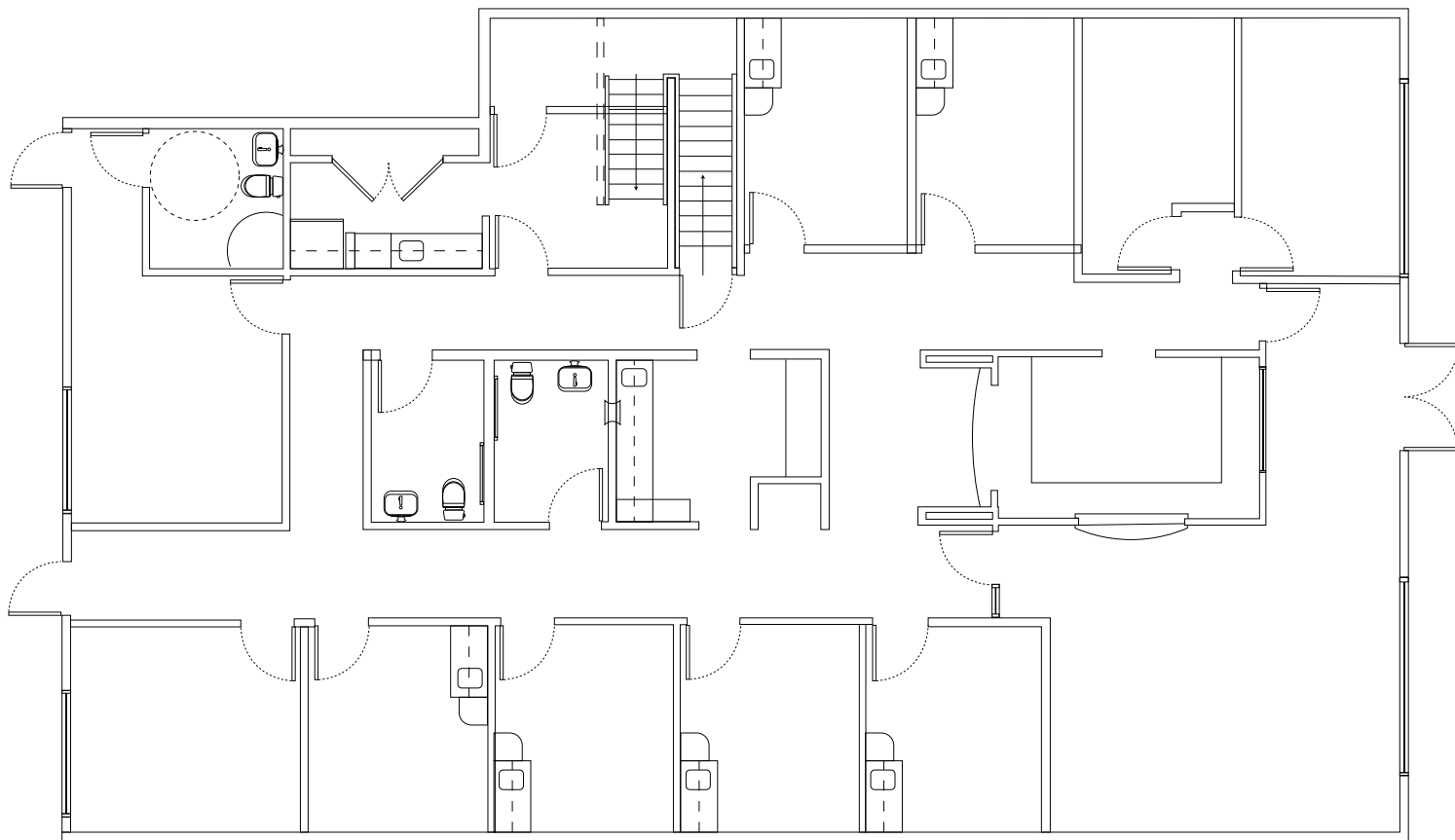


## Shawnee West Medical Condo

21624 Midland Dr | Shawnee, KS 66218

# Building Highlights:

- 3,315 SF medical office condo
- Current Layout:
  - 6 exam rooms
  - 4 offices
  - Waiting/Reception area & counter
  - Nurses station
  - 3 restrooms
  - Break room
- Upgraded HVAC units
- New roof installed in 2018
- Sale Price: \$750,000
- Lease Rate: \$25.00/SF Full Service





For Sale/Lease

# Photos:

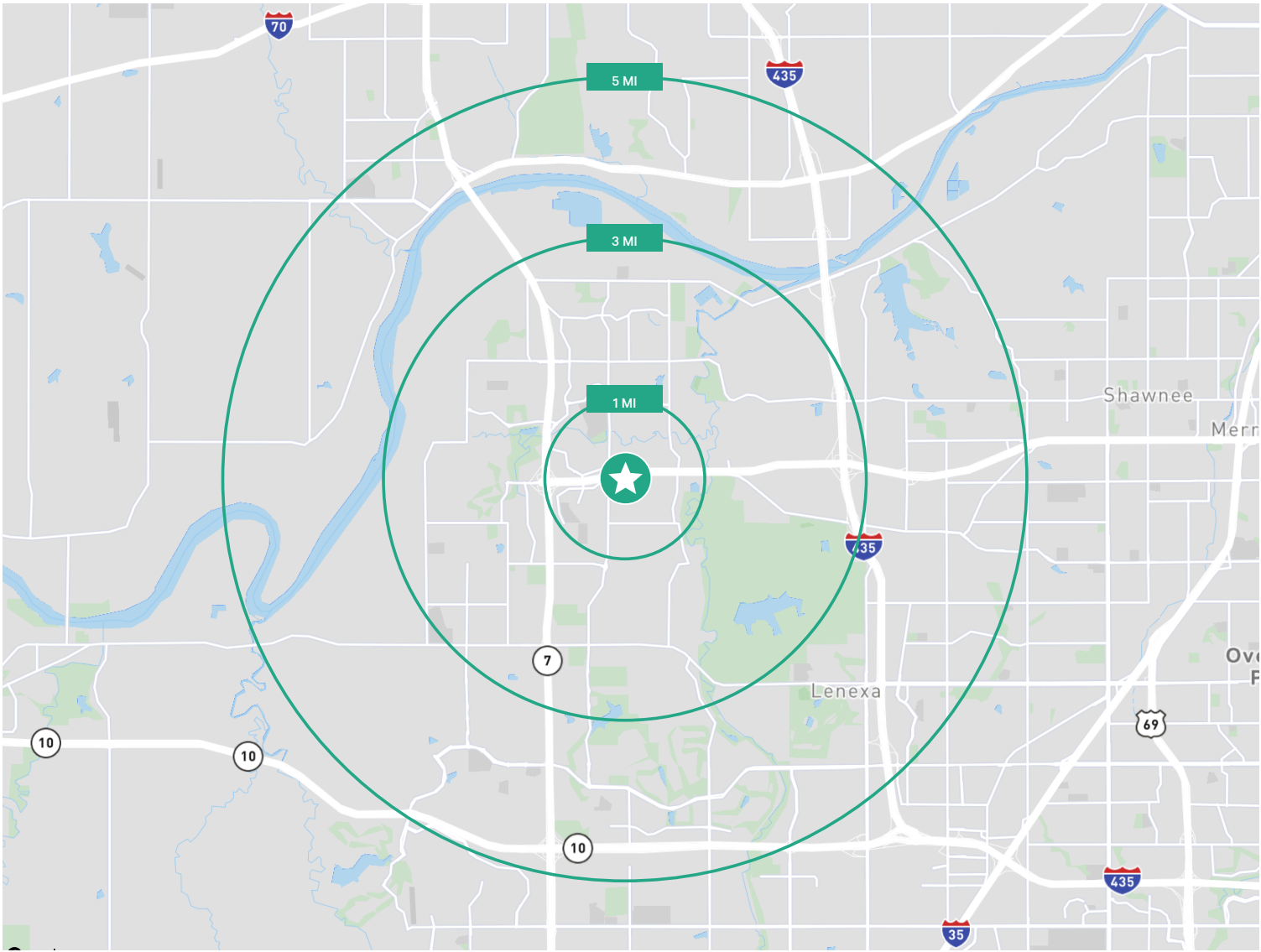




# Amenity map:



# Demographics:



Demographics	1 Mile	3 miles	5 miles
Population	5,482	31,449	82,648
Households	1,836	10,682	31,459
Household Income	\$180,875	\$182,848	\$164,563
Housing Units	1,902	10,986	32,929
Education	3,410	20,118	56,020
Businesses	197	797	2,306
Employees	2,059	8,618	28,553





## Contact Us

**Primary Contact**

**Brice Shamberger**

Senior Associate

+1 816 968 5810

[brice.shamberger@cbre.com](mailto:brice.shamberger@cbre.com)

**Keith Baker, CCIM**

First Vice President

+1 816 968 5883

[keith.baker@cbre.com](mailto:keith.baker@cbre.com)

© 2025 CBRE, Inc. All rights reserved. This information has been obtained from sources believed reliable, but has not been verified for accuracy or completeness. You should conduct a careful, independent investigation of the property and verify all information. Any reliance on this information is solely at your own risk. CBRE and the CBRE logo are service marks of CBRE, Inc. All other marks displayed on this document are the property of their respective owners, and the use of such logos does not imply any affiliation with or endorsement of CBRE. Photos herein are the property of their respective owners. Use of these images without the express written consent of the owner is prohibited.