

For Lease

CBRE

7020 Douglas Ave

Neighborhood Center

Urbandale, IA 50322 | www.cbre.com/desmoines



Retail

Property Overview

Located in the heart of Urbandale, the retail center offers a prime location with excellent visibility and access. The center faces Douglas Avenue, making it an ideal spot for businesses looking to attract local customers. With flexible lease terms, this property is perfect for retail or office use.

Available Space

- + Suite J: 1,227 SF

Lease Rate

- + \$10.00 PSF NNN
- + OPEX : \$6.50 PSF

Building Features

- + Located off Douglas Ave and nearby the Merle Hay Rd Retail Corridor
- + Exterior Building Signage
- + Co-Tenants include Micky Finn's Pub, Best Fit Tailors, Kathy Nails, American Family Insurance, M&M Beauty Supply, Douglas Hair & Inteliroute Technologies, The Diamond Dog Pet Grooming.

7020 Douglas Ave
Urbandale, IA 50322

For Lease

Available Space



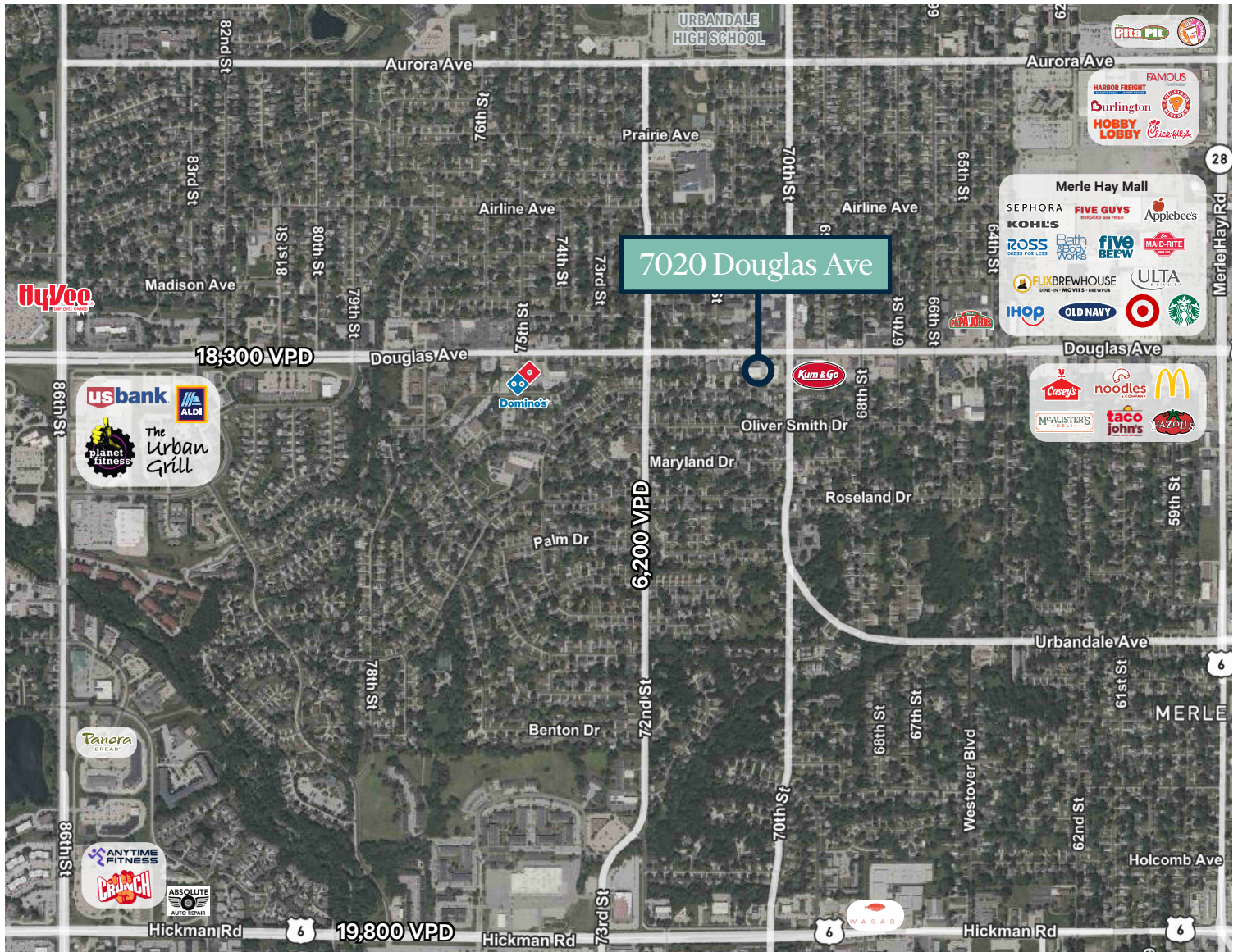
Suite J

- + 1,227 SF
- + 4 private offices
- + Reception area
- + Restroom
- + Storage Space

Site Plan



Location



Contact Us

Grant Wright, CCIM
Senior Vice President
+1 515 745 5113
grant.wright@cbre.com
Licensed in the State of Iowa.

Drew Rosonke
Senior Associate
+1 515 612 5494
drew.rosonke@cbre.com
Licensed in the State of Iowa.

© 2025 CBRE, Inc. All rights reserved. This information has been obtained from sources believed reliable but has not been verified for accuracy or completeness. CBRE, Inc. makes no guarantee, representation or warranty and accepts no responsibility or liability as to the accuracy, completeness, or reliability of the information contained herein. You should conduct a careful, independent investigation of the property and verify all information. Any reliance on this information is solely at your own risk. CBRE and the CBRE logo are service marks of CBRE, Inc. All other marks displayed on this document are the property of their respective owners, and the use of such marks does not imply any affiliation with or endorsement of CBRE. Photos herein are the property of their respective owners. Use of these images without the express written consent of the owner is prohibited.