



**COLDWELL BANKER
COMMERCIAL**

WORLDPORT BUSINESS CENTER

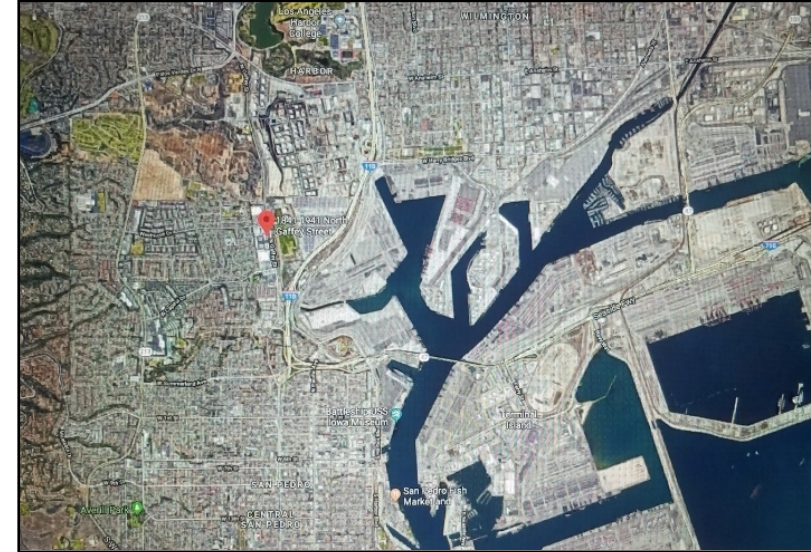
PROPERTY DESCRIPTION OVERVIEW

- Flex - Office - Retail Spaces Available
- **Close Proximity to Port of Los Angeles**
- Excellent Freeway Access
- Spaces can be Combined for Additional Square Footage
- Major Boulevard - Gaffey Street

AVAILABLE SPACE

464-3,000 SQ FT

\$1.50 - \$2.10 / SF



OFFICE	SF
1891 N Gaffey Street, Unit I	464
1891 N Gaffey Street, Suite 226	782
1891 N Gaffey Street, Suite 217	1,197
1891 N Gaffey Street, Suite 221	1,293
1891 N Gaffey Street, Suite 209	1,693
1891 N Gaffey Street, Suite 236	1,396

FLEX	SF
1941 N Gaffey Street, Unit D	920

RETAIL	SF
1931 N Gaffey Street, Suite FG	2,640
1851 N Gaffey Street, Suite C	1,320

**FOR MORE INFORMATION,
PLEASE CONTACT:**

Joel A. Mostert

Lic # 01408423

Coldwell Banker Commercial Realty

(310) 619-0219

mostey393@gmail.com



**COLDWELL BANKER
COMMERCIAL**

WORLDPORT BUSINESS CENTER

1841 - 1941 N. GAFFEY STREET, SAN PEDRO, CA 90731

