

FOR SALE

1140 SW BARBUR BLVD

PORTLAND, OR 97219

This property offers a 3,684 SF building situated on a spacious 0.35-acre lot. It features 15 parking stalls, providing ample parking.

KIDDER.COM

km Kidder
Mathews

11140 SW BARBUR BLVD



The building is ideal for business or investment, competitively priced for buyers seeking value.

ADDRESS	11140 SW Barbur Blvd Portland, OR
BUILDING SIZE	3,684 SF
LOT SIZE	0.35 AC
YEAR BUILT	1985
ZONING	C2
PARKING	15 stalls
SALE PRICE	\$500,000

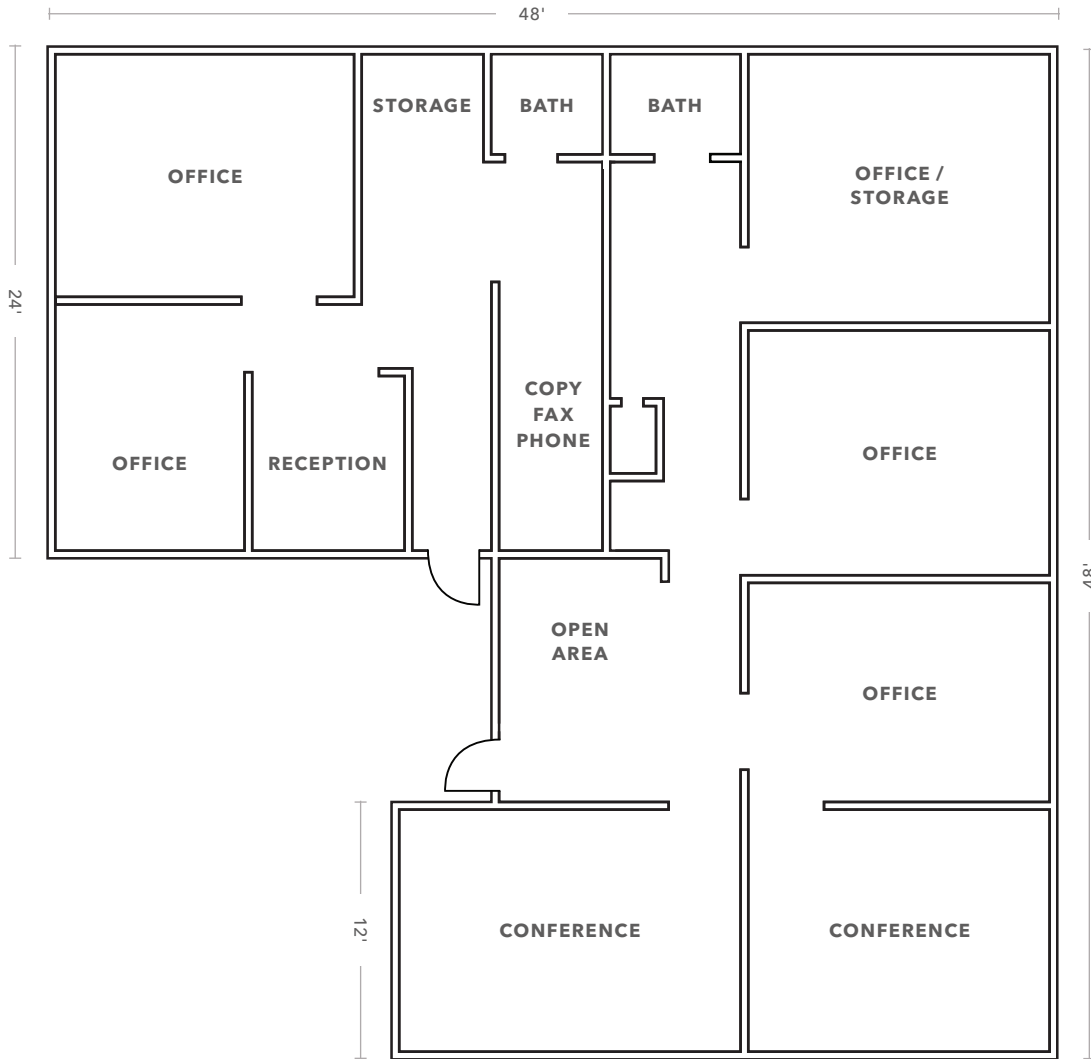
3,684 SF

AVAILABLE

\$500K

SALE PRICE

FIRST FLOOR PLAN



3,684 SF

BUILDING SIZE

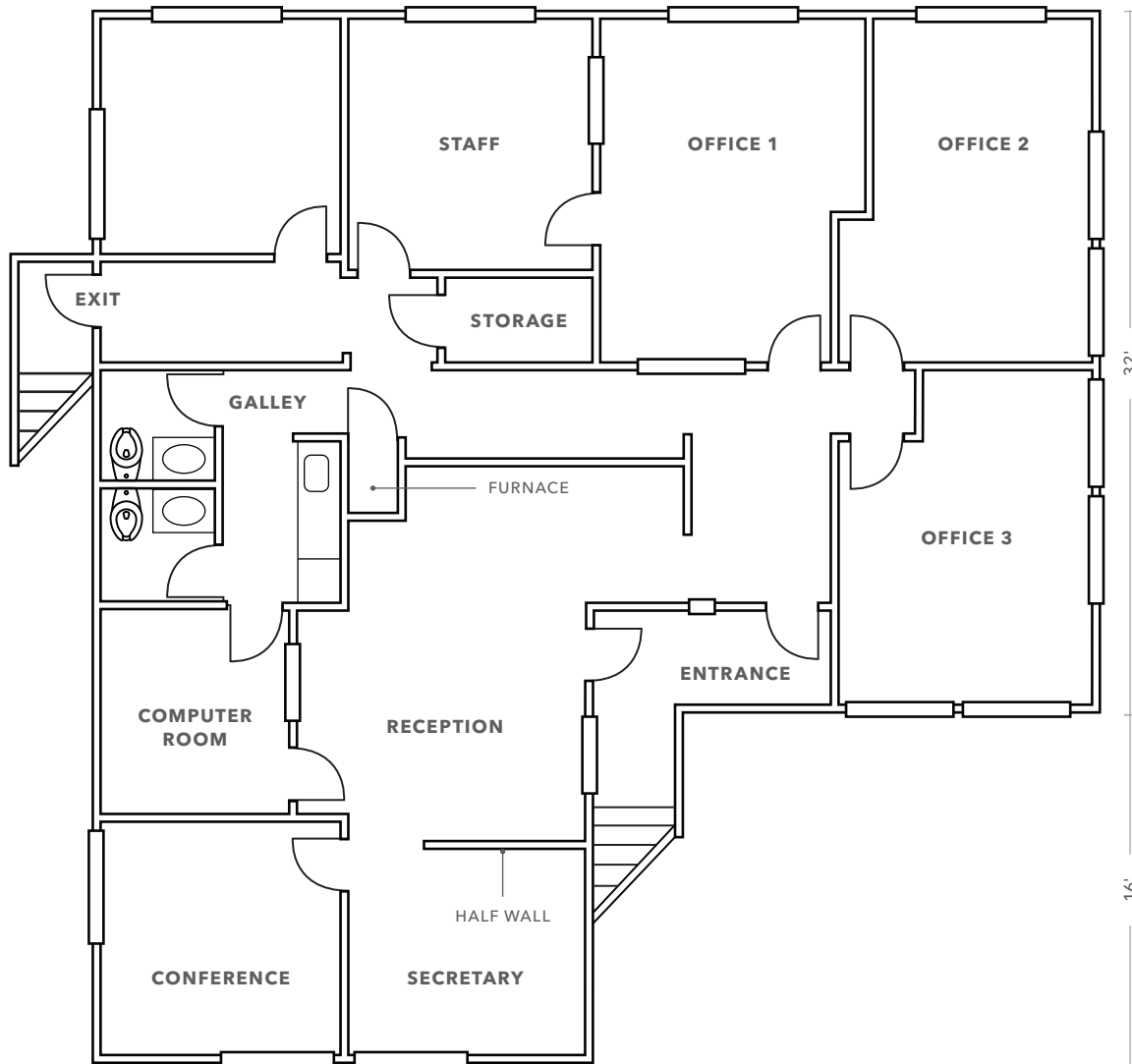
\$500K

SALE PRICE

NOW

AVAILABLE

SECOND FLOOR PLAN



3,684 SF

BUILDING SIZE

\$500K

SALE PRICE

NOW

AVAILABLE



11140 SW BARBUR BLVD

For more information on this property, please contact

CARTER MCFARLAND
 Senior Vice President
 503.721.2726
 carter.mcfarland@kidder.com

JOE DEJAGER
 Senior Vice President
 503.221.2267
 joe.dejager@kidder.com

KIDDER.COM

This information supplied herein is from sources we deem reliable. It is provided without any representation, warranty, or guarantee, expressed or implied as to its accuracy. Prospective Buyer or Tenant should conduct an independent investigation and verification of all matters deemed to be material, including, but not limited to, statements of income and expenses. Consult your attorney, accountant, or other professional advisor.

