

# 500 GROVE STREET

Haddon Heights, NJ 08035



FOR LEASE



OFFICE



3,456+/- SF



## PROPERTY DESCRIPTION

- 3,456+/- RSF 2nd floor suite available in 31,797 SF multi-tenant building
- Kitchen in suite
- Tenant directory in lobby
- Great location right off White Horse Pike
- Elevator served
- 125 parking spaces
- Close proximity to I-295
- Under 4 miles to Route 42

## LEASE RATE:

**\$22.00 SF/YR +UTILITIES**



## FOR MORE INFORMATION

**Rebecca Ting, SIOR**

☎ 856.234.9600 x206

✉ rebecca.ting@naimertz.com

**Julie Kronfeld**

☎ 856.802.6516

✉ julie.kronfeld@naimertz.com

NAI MERTZ DISCLAIMER: NO WARRANTY OR REPRESENTATION, EXPRESS OR IMPLIED, IS MADE AS TO THE ACCURACY OF THE INFORMATION CONTAINED HEREIN, AND THE SAME IS SUBMITTED SUBJECT TO ERRORS, OMISSIONS, CHANGE OF PRICE, RENTAL OR OTHER CONDITIONS, PRIOR SALE, LEASE OR FINANCING, OR WITHDRAWAL WITHOUT NOTICE, AND OF ANY SPECIAL LISTING CONDITIONS IMPOSED BY OUR PRINCIPALS NO WARRANTIES OR REPRESENTATIONS ARE MADE AS TO THE CONDITION OF THE PROPERTY OR ANY HAZARDS CONTAINED THEREIN ARE ANY TO BE IMPLIED. OUTLINES ARE APPROXIMATE AND SHOWN ONLY TO IDENTIFY THE PARCEL IN CONSIDERATION.

# NAI Mertz



**NAI Mertz** | 21 Roland Avenue

Mount Laurel, NJ 08054

856.234.9600 | [naimertz.com](http://naimertz.com)



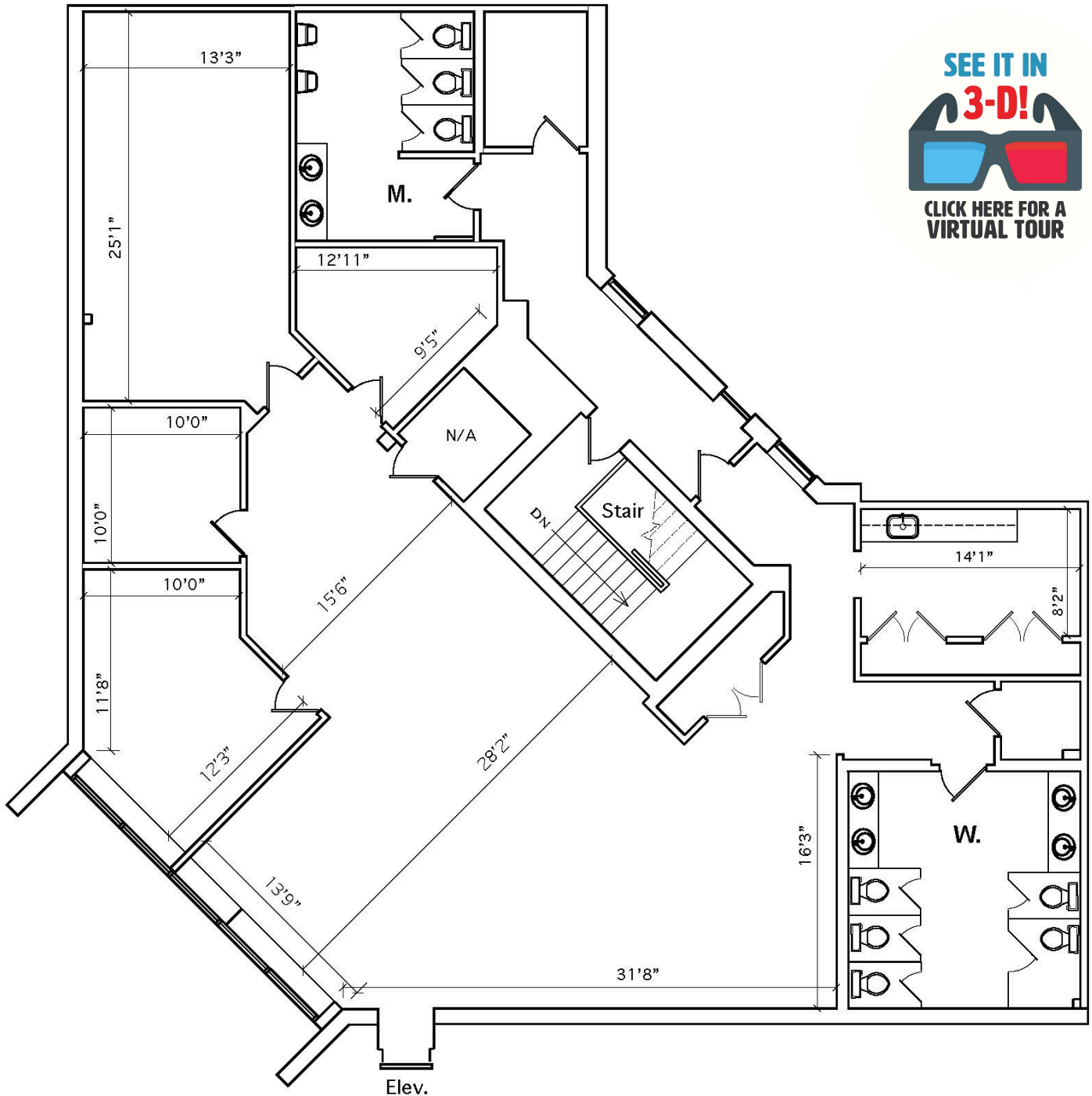
# 500 GROVE STREET

Haddon Heights, NJ 08035

 FOR LEASE

 OFFICE

 3,456+/- SF



## FOR MORE INFORMATION

**Rebecca Ting, SIOR**

 856.234.9600 x206

 rebecca.ting@naimertz.com


**Julie Kronfeld**

 856.802.6516

 julie.kronfeld@naimertz.com

NAI MERTZ DISCLAIMER: NO WARRANTY OR REPRESENTATION, EXPRESS OR IMPLIED, IS MADE AS TO THE ACCURACY OF THE INFORMATION CONTAINED HEREIN, AND THE SAME IS SUBMITTED SUBJECT TO ERRORS, OMISSIONS, CHANGE OF PRICE, RENTAL OR OTHER CONDITIONS, PRIOR SALE, LEASE OR FINANCING, OR WITHDRAWAL WITHOUT NOTICE, AND OF ANY SPECIAL LISTING CONDITIONS IMPOSED BY OUR PRINCIPALS NO WARRANTIES OR REPRESENTATIONS ARE MADE AS TO THE CONDITION OF THE PROPERTY OR ANY HAZARDS CONTAINED THEREIN ARE ANY TO BE IMPLIED. OUTLINES ARE APPROXIMATE AND SHOWN ONLY TO IDENTIFY THE PARCEL IN CONSIDERATION.

# NAIMertz

 **NAI Mertz** | 21 Roland Avenue  
Mount Laurel, NJ 08054  
856.234.9600 | [naimertz.com](http://naimertz.com)





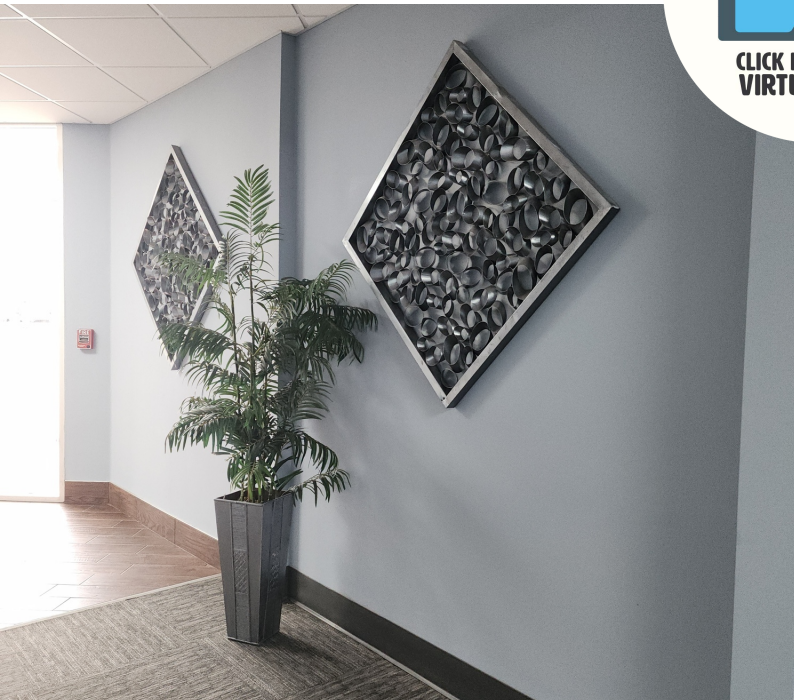
# 500 GROVE STREET

Haddon Heights, NJ 08035

 **FOR LEASE**

 **OFFICE**

 **3,456+/- SF**



## FOR MORE INFORMATION

**Rebecca Ting, SIOR**

 856.234.9600 x206

 rebecca.ting@naimertz.com


**Julie Kronfeld**

 856.802.6516

 julie.kronfeld@naimertz.com

NAI MERTZ DISCLAIMER: NO WARRANTY OR REPRESENTATION, EXPRESS OR IMPLIED, IS MADE AS TO THE ACCURACY OF THE INFORMATION CONTAINED HEREIN, AND THE SAME IS SUBMITTED SUBJECT TO ERRORS, OMISSIONS, CHANGE OF PRICE, RENTAL OR OTHER CONDITIONS, PRIOR SALE, LEASE OR FINANCING, OR WITHDRAWAL WITHOUT NOTICE, AND OF ANY SPECIAL LISTING CONDITIONS IMPOSED BY OUR PRINCIPALS NO WARRANTIES OR REPRESENTATIONS ARE MADE AS TO THE CONDITION OF THE PROPERTY OR ANY HAZARDS CONTAINED THEREIN ARE ANY TO BE IMPLIED. OUTLINES ARE APPROXIMATE AND SHOWN ONLY TO IDENTIFY THE PARCEL IN CONSIDERATION.

# NAIMertz

 **NAI Mertz** | 21 Roland Avenue  
Mount Laurel, NJ 08054  
856.234.9600 | [naimertz.com](http://naimertz.com)





# 500 GROVE STREET

Haddon Heights, NJ 08035



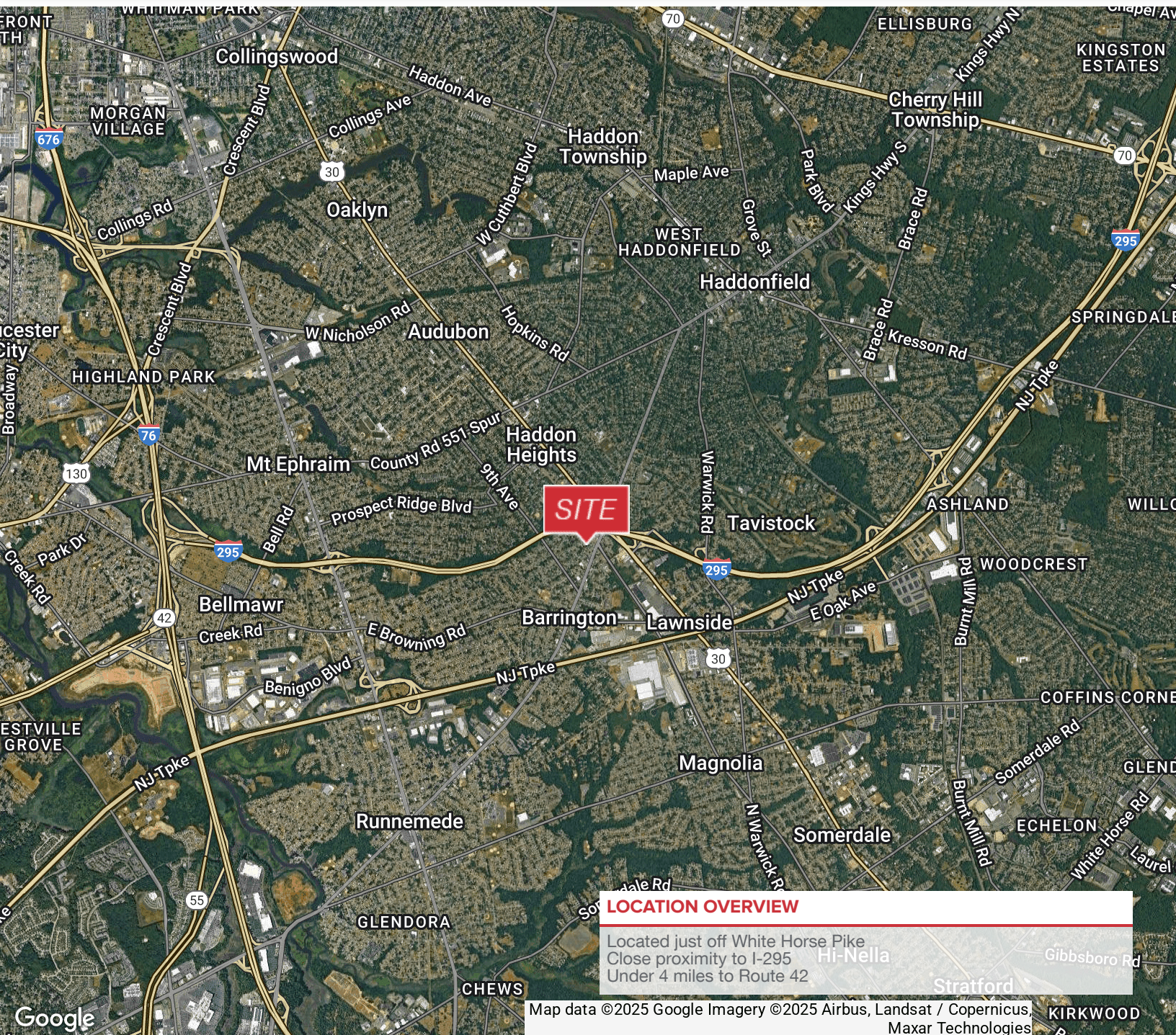
FOR LEASE



OFFICE



3,456+/- SF



## LOCATION OVERVIEW

Located just off White Horse Pike  
Close proximity to I-295  
Under 4 miles to Route 42

Map data ©2025 Google Imagery ©2025 Airbus, Landsat / Copernicus, Maxar Technologies

## FOR MORE INFORMATION

Rebecca Ting, SIOR

856.234.9600 x206

rebecca.ting@naimertz.com

Julie Kronfeld

856.802.6516

julie.kronfeld@naimertz.com

NAI MERTZ DISCLAIMER: NO WARRANTY OR REPRESENTATION, EXPRESS OR IMPLIED, IS MADE AS TO THE ACCURACY OF THE INFORMATION CONTAINED HEREIN, AND THE SAME IS SUBMITTED SUBJECT TO ERRORS, OMISSIONS, CHANGE OF PRICE, RENTAL OR OTHER CONDITIONS, PRIOR SALE, LEASE OR FINANCING, OR WITHDRAWAL WITHOUT NOTICE, AND OF ANY SPECIAL LISTING CONDITIONS IMPOSED BY OUR PRINCIPALS NO WARRANTIES OR REPRESENTATIONS ARE MADE AS TO THE CONDITION OF THE PROPERTY OR ANY HAZARDS CONTAINED THEREIN ARE ANY TO BE IMPLIED. OUTLINES ARE APPROXIMATE AND SHOWN ONLY TO IDENTIFY THE PARCEL IN CONSIDERATION.

# NAI Mertz



NAI Mertz | 21 Roland Avenue

Mount Laurel, NJ 08054

856.234.9600 | [naimertz.com](http://naimertz.com)

