

REFER TO GENERAL NOTES ON A002 FOR ADDITIONAL INFORMATION  
SEE A920 FOR PARTITION SCHEDULE & STANDARD PARTITION DETAILS

The diagram shows a vertical line representing a wall on the left. To its right is a rectangular box divided into three horizontal sections. The top section contains the text 'PARTITION TYPE: REFERENCE DETAILED TYPE INFORMATION & SCHEDULE ON A920'. The middle section contains the text 'PARTITION TAG'. The bottom section contains the text 'PARTITION HEIGHT: BLANK - INDICATES NON-RATED PARTITIONS EXTEND TO ABOVE CEILING & RATED PARTITIONS EXTEND TO DECK. SEE TYPICAL DETAILS BELOW'. To the right of the box, there is a vertical line segment labeled 'DECK - INDICATES PARTITION EXTENDS TO UNDERSIDE OF STRUCTURAL DECK, TYPICAL FOR ALL RATED PARTITIONS. SEE TYPICAL DETAIL BELOW'. Below the deck line, there is a horizontal line segment labeled 'X" X" - INDICATES SPECIFIC HEIGHT OF PARTITION ABOVE TOP OF SLAB'.

WALL

PARTITION TYPE:  
REFERENCE DETAILED TYPE INFORMATION &  
SCHEDULE ON A920

PARTITION TAG

PARTITION HEIGHT:  
BLANK - INDICATES NON-RATED PARTITIONS  
EXTEND TO ABOVE CEILING & RATED PARTITIONS  
EXTEND TO DECK. SEE TYPICAL DETAILS BELOW

DECK - INDICATES PARTITION EXTENDS TO  
UNDERSIDE OF STRUCTURAL DECK, TYPICAL FOR  
ALL RATED PARTITIONS. SEE TYPICAL DETAIL BELOW

X" X" - INDICATES SPECIFIC HEIGHT OF  
PARTITION ABOVE TOP OF SLAB

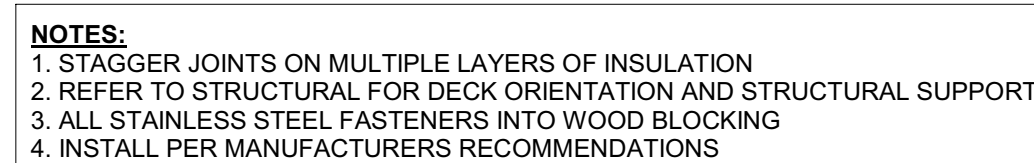
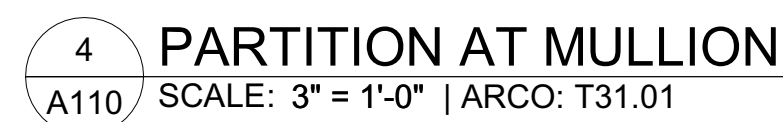
1 HOUR PARTITION

2 HOUR PARTITION

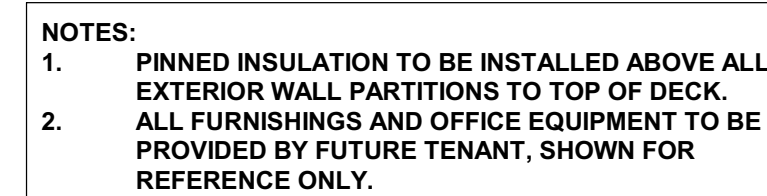
3 HOUR PARTITION

METAL STUD PARTITION

MASONRY PARTITION



2 ROOF MECHANICAL CURB  
A110 SCALE: 3" = 1'-0" | ARCO: A20.02



1 OFFICE PLAN  
A110 SCALE: 1/4" = 1'-0"