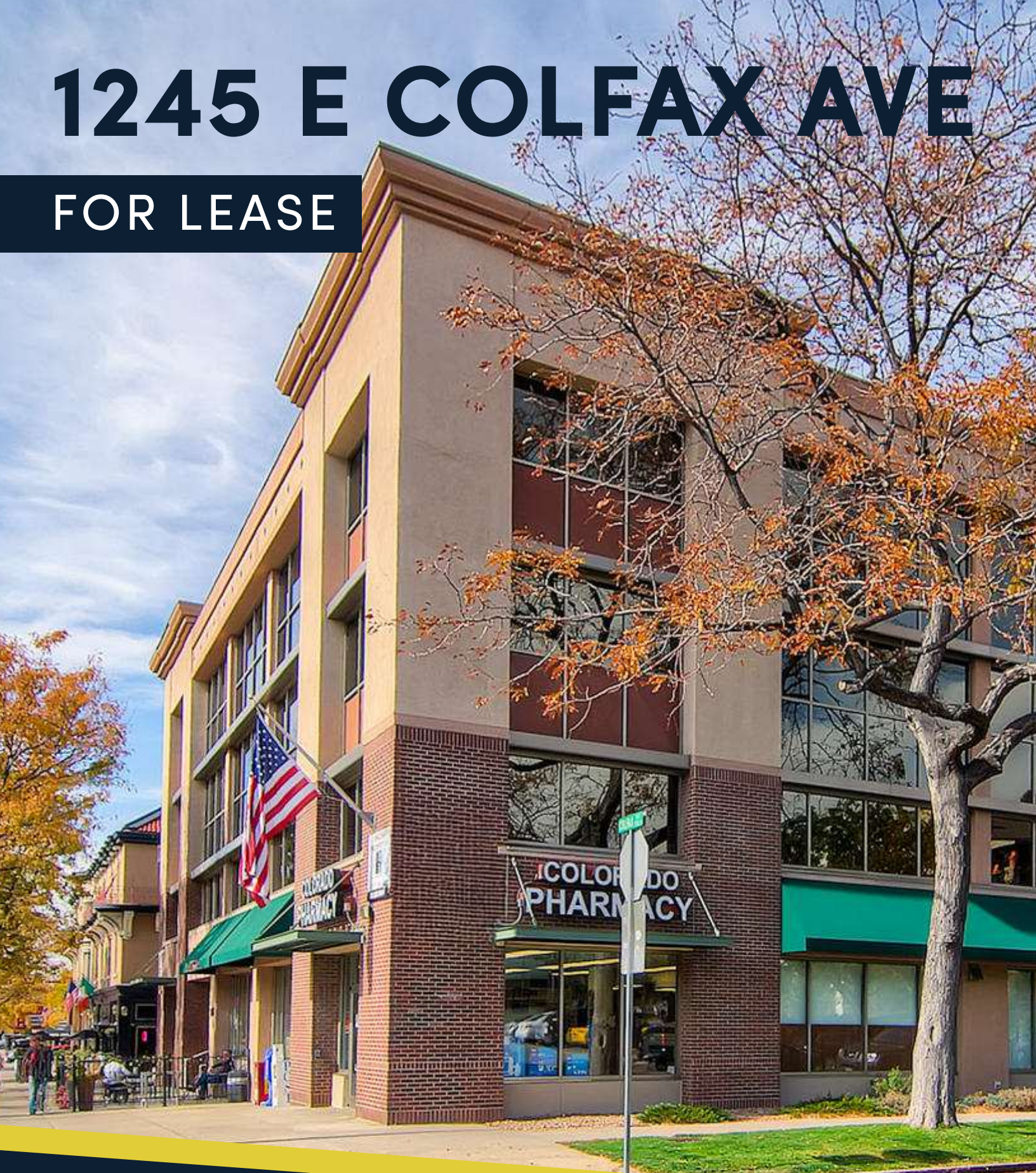


# 1245 E COLFAX AVE

FOR LEASE

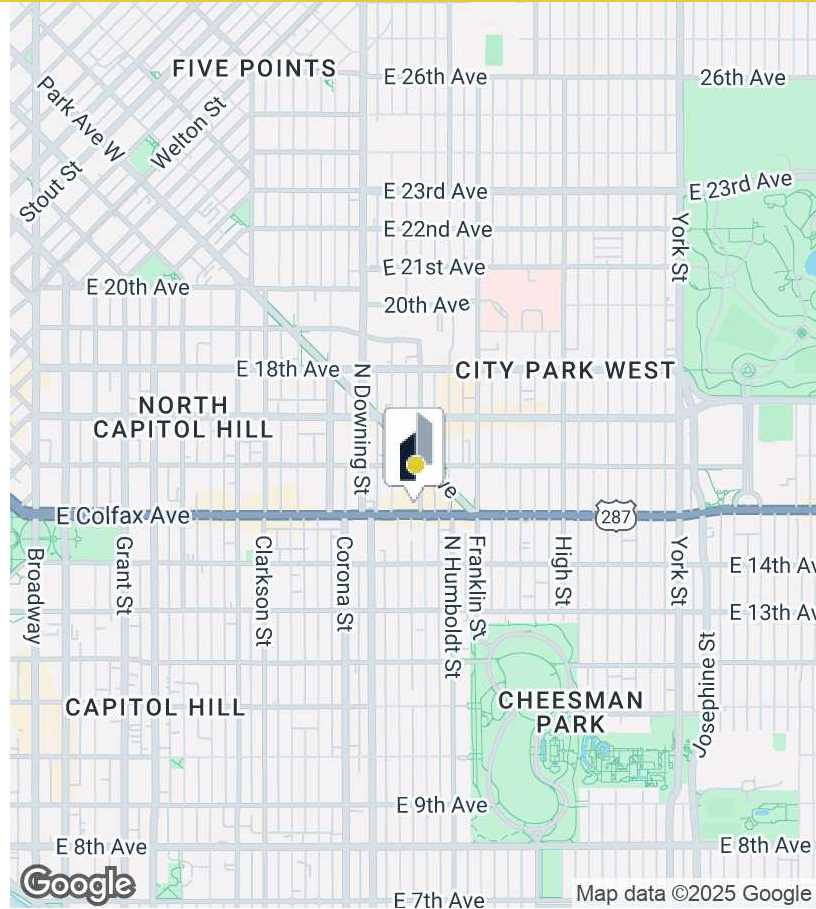




# PROPERTY OVERVIEW

## PROPERTY FEATURES

- Abundant surface parking for tenants and clients
- Option for garage parking available
- Modern and well-maintained property
- Prime location in Central Denver
- Easily accessible from major transportation routes
- \$21.00 SF/YR
- 756-1,102 SF Available





# ADDITIONAL PHOTOS







**Brian Lantzy**

Director | Associate Broker

303.518.7406

[blantzy@wheelhousecommercial.com](mailto:blantzy@wheelhousecommercial.com)



574 SANTA FE DRIVE | DENVER, CO 80204 | [WWW.INTELICACRE.COM](http://WWW.INTELICACRE.COM)