



4901 FITZHUGH AVENUE

RICHMOND, VA 23230

SECOND FLOOR: 1,600 SF

THIRD FLOOR: 1,100 SF + 4,148 SF (5,248 SF TOTAL)

 **\$21/PSF/Full Service**

PROPERTY HIGHLIGHTS

- ✓ WELL LOCATED
WILLOW LAWN AREA
- ✓ NEW BUILDING
EXTERIOR FINISH
- ✓ RENOVATED LOBBIES
AND RESTROOMS
- ✓ AVAILABLE SQ FT: 6,848 SF
- ✓ OFF STREET PARKING

KEN CAMPBELL | 804.387.8812 | KEN.CAMPBELL@ONESOUTHCOMMERCIAL.COM

ONE SOUTH COMMERCIAL
is pleased to present an
office space for lease in the
heart of Willow Lawn.

QUICK FACTS

ADDRESS | 4901 Fitzhugh Ave,
Richmond, VA 23230

RENTABLE SQ FT | 1,100 – 6,848 SF +/-
Second floor: 1,600 SF
Third floor: 1,100 SF + 4,148 SF
(5,248 SF Total)

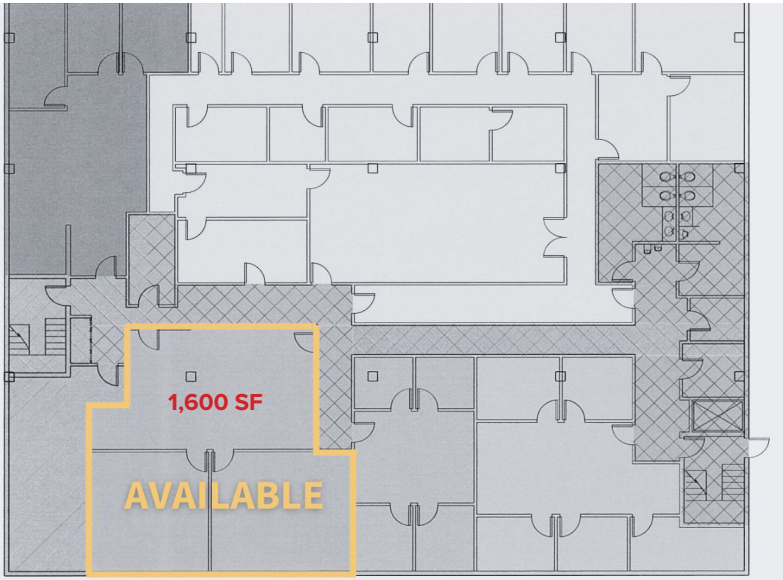
LISTING TYPE | Full Service

SPACE TYPE | Office

TENACY | Multi

LEASE TERM | Negotiable

RATE TYPE | \$21/PSF/Full Service



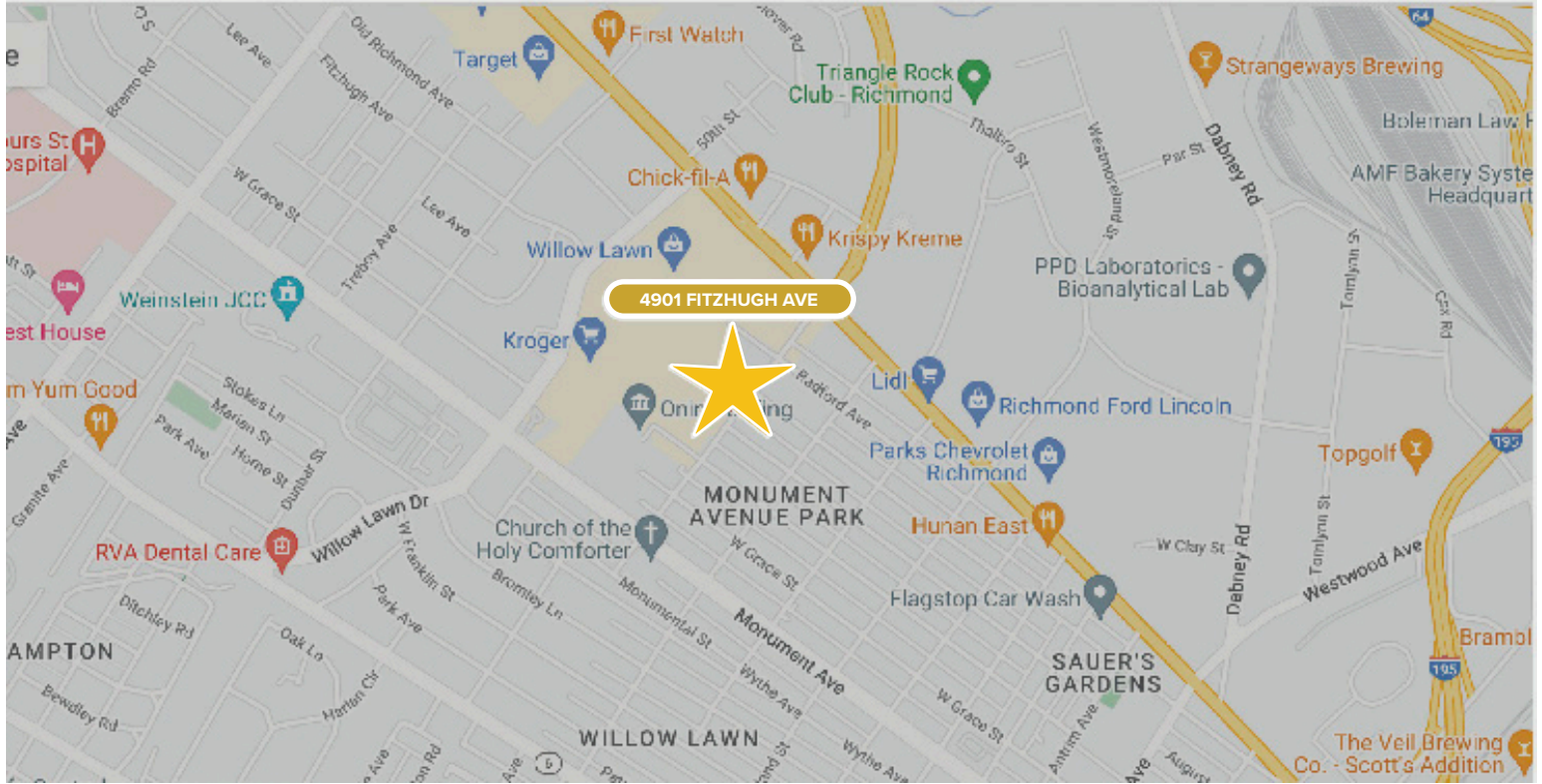
SECOND FLOOR



THIRD FLOOR



LOCATION AND AGENT



ONE SOUTH COMMERCIAL is a CoStar PowerBroker in the Richmond, VA investment sales market. Our reputation among those with local knowledge as the premier investment sales shop in the City of Richmond is built on a wide network of relationships with principals all over the world who trust us and our ability to effectively analyze the economics of any deal and represent them honestly.



KEN CAMPBELL | 804.387.8812
ken.campbell@onesouthcommercial.com

