

**FOR LEASE: OUTPATIENT MEDICAL SPACE ON "PILL HILL"**



## **Atlanta Medical Quarters**

**14,539 RSF Available**

**5555 Peachtree Dunwoody Road NE, Atlanta, GA 30342**

**Healthpeak®** | **DOC  
LISTED  
NYSE**

**SCOTT DUNKLE, VICE PRESIDENT - LEASING**  
**414.367.5556 | [SDunkle@healthpeak.com](mailto:SDunkle@healthpeak.com)**



## PROPERTY OVERVIEW

Strategically located on "Pill Hill"—Atlanta's premier medical destination—the Medical Quarters professional condominium building offers prime medical suites featuring on-site property management.

The building includes a three-story lobby with natural light, indoor greenery, seating, and a pharmacy with convenient access to Interstate 285, GA-400, T. Harvey Mathis Parkway, and the MARTA Medical Center station.

---

**CAMPUS SETTING** Located on Atlanta's "Pill Hill"

---

**BUILDING DETAILS** 11,473 RSF Available  
Five Units Available

---

**AVAILABLE** Suite G51: 3,260 RSF  
Suite 120: 1,040 RSF  
Suite 130: 1,035 RSF  
Suite 135: 2,177 RSF  
Suite 155: 1,256 RSF  
Suite 180: 1,810 RSF  
Suite 215: 3,961 RSF

---

**ACCESS** Convenient access to I-285

---

# ATLANTA MEDICAL QUARTERS

5555 PEACHTREE DUNWOODY RD, ATLANTA, GA 30342



## LOCAL HOSPITALS

Located in the heart of Atlanta's most dynamic health care market, Pill Hill is known as an exceptional center for medical innovation and patient care. The area features three nationally acclaimed hospitals: Northside Hospital of Atlanta, Emory at Saint Joseph's, and Children's Healthcare of Atlanta at Scottish Rite. These hospitals provide a diverse array of services to residents in and around Atlanta's metropolitan area. In addition to the hospitals, there are hundreds of physician practices and outpatient centers within the area, all served by a dedicated MARTA station, Medical Center Station.

## AREA OVERVIEW

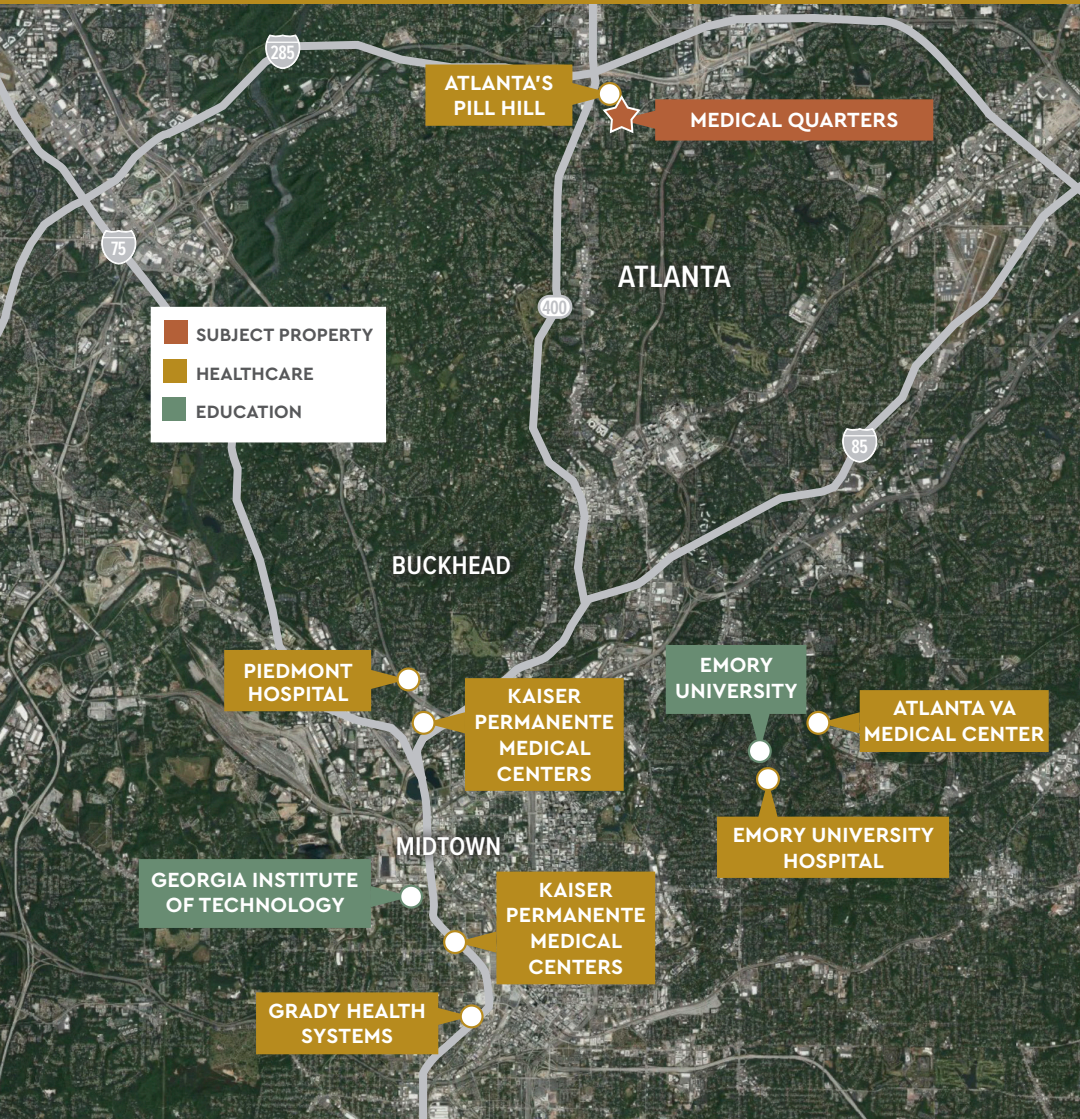
As the capital of Georgia and home to the world's most traveled airport, Hartsfield-Jackson Atlanta International Airport, Atlanta also has the country's third-largest concentration of Fortune 500 companies, including Coca-Cola, Delta Airlines, The Home Depot, UPS, Chick-fil-a, and Porsche. With more than 1.9 million jobs forecasted to be created by 2040 and the most affordable cost of living among the U.S.'s ten largest metro areas, this growing city offers a prime location for your medical practice.

Healthpeak® | **DOC LISTED NYSE**

SCOTT DUNKLE, VICE PRESIDENT - LEASING  
414.367.5556 | [SDunkle@healthpeak.com](mailto:SDunkle@healthpeak.com)

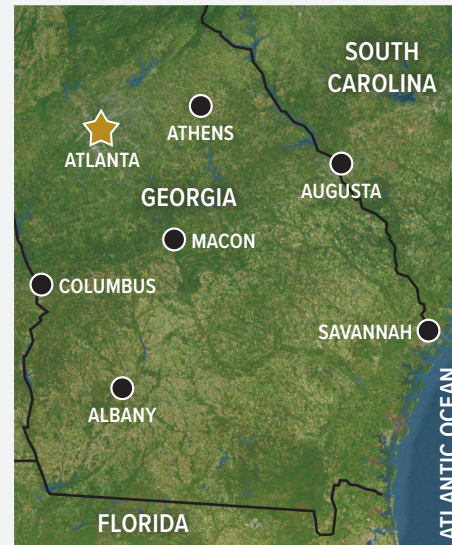
# ATLANTA MEDICAL QUARTERS

5555 PEACHTREE DUNWOODY RD, ATLANTA, GA 30342



## DEMOGRAPHICS

Distance	Total Population	Median Household Income
1-Mile	8,373	\$94,635
3-Miles	118,177	\$99,725
5-Miles	276,272	\$95,319



### Area Healthcare

- Athens, GA**
- St. Mary's Health Care System
  - Piedmont Athens Regional Medical Center
  - Landmark Hospital of Athens
- Augusta, GA**
- Doctors Hospital of Augusta
  - Charlie Norwood VA Medical Center
  - Augusta University Medical Center
- Columbus, GA**
- Piedmont Columbus Regional Midtown
  - Jack Hughston Memorial Hospital
  - Piedmont Columbus Regional Northside
  - St. Francis Medical Group
- Macon, GA**
- Atrium Health Navicent The Medical Center
  - Piedmont Macon Medical Center
  - Northside Hospital Cancer Institute Radiation Oncology - Macon
- Savannah, GA**
- Memorial Health University Medical Center
  - Candler Hospital

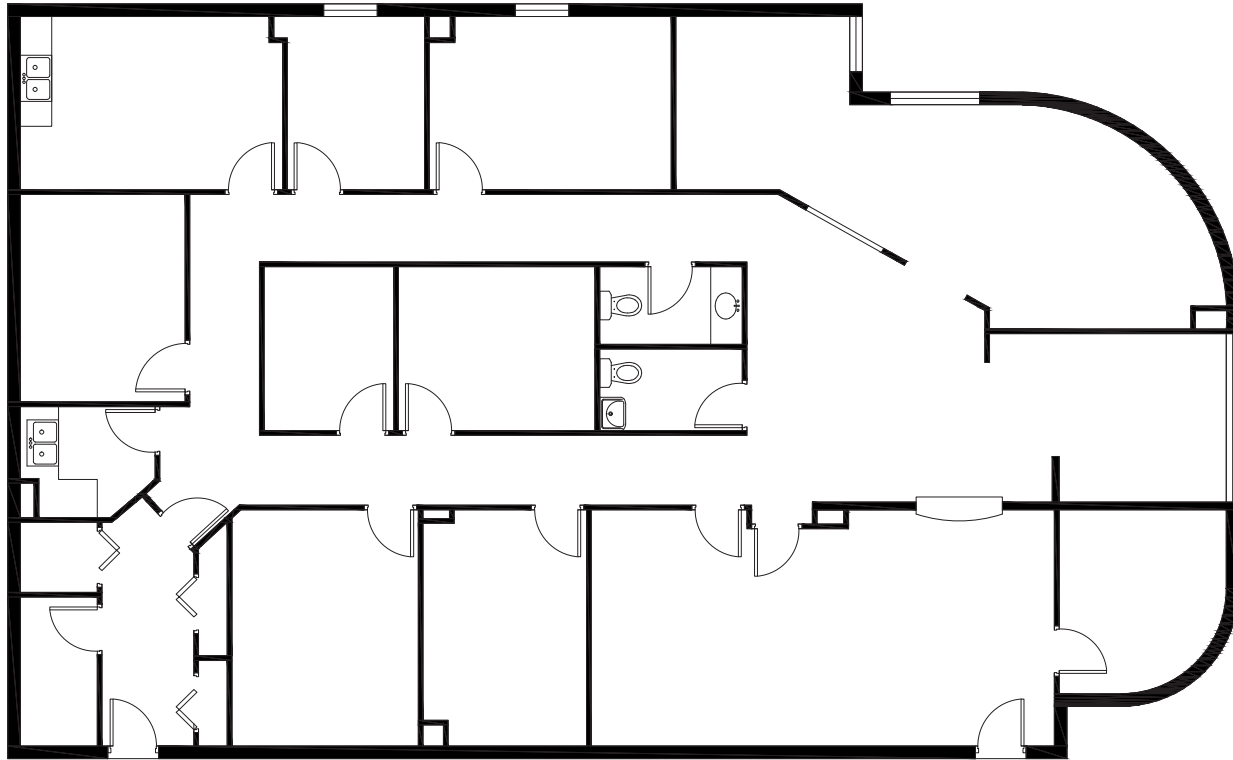
**Healthpeak**<sup>®</sup> | **DOC LISTED NYSE**

SCOTT DUNKLE, VICE PRESIDENT - LEASING  
414.367.5556 | SDunkle@healthpeak.com



Example of finishes that can be replicated in any of the existing suites in the building.

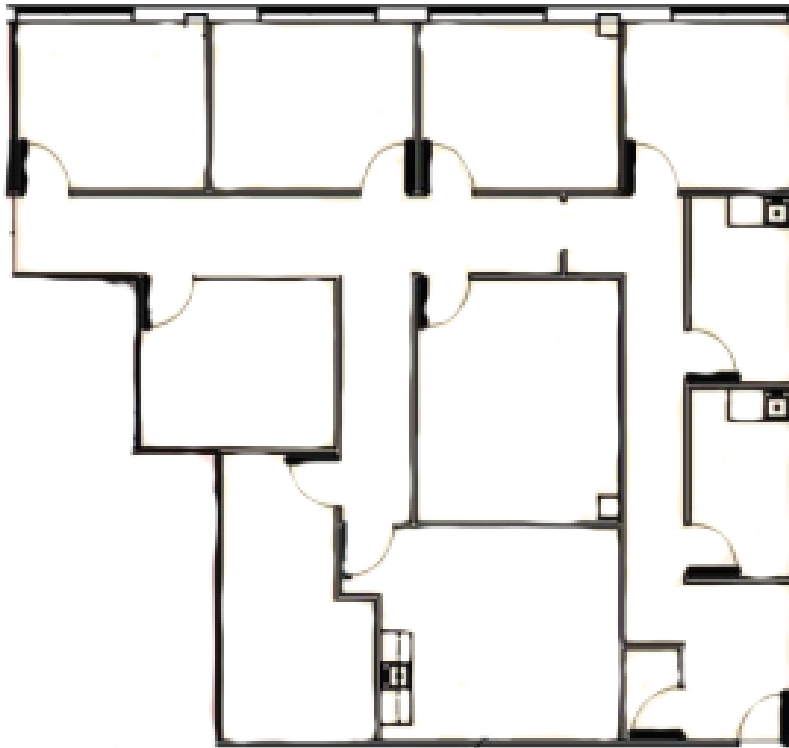




## GROUND FLOOR

---

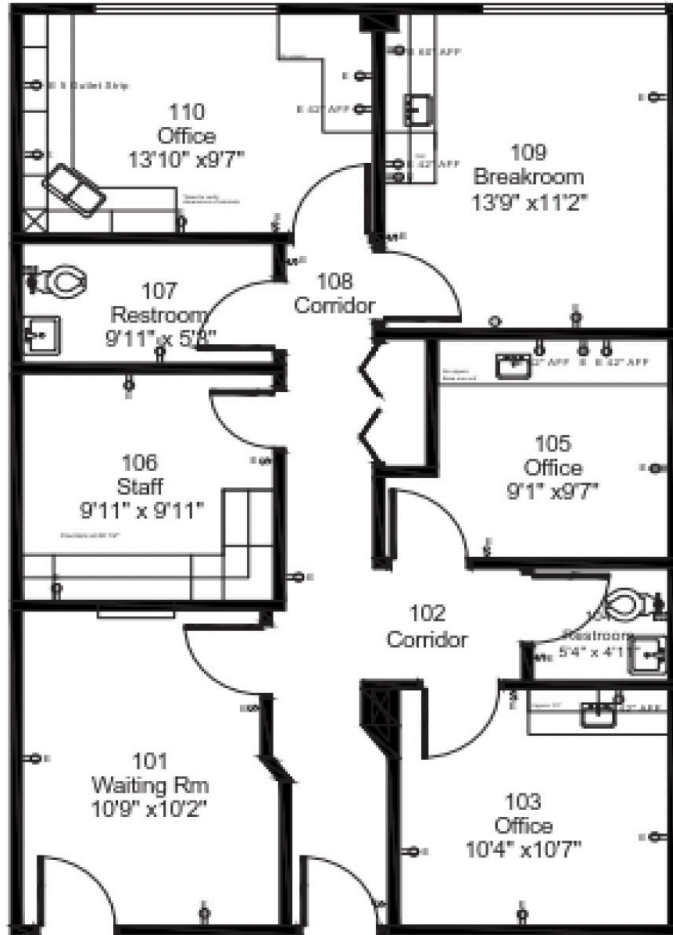
**Suite G51**  
**3,260 RSF**



## FIRST FLOOR

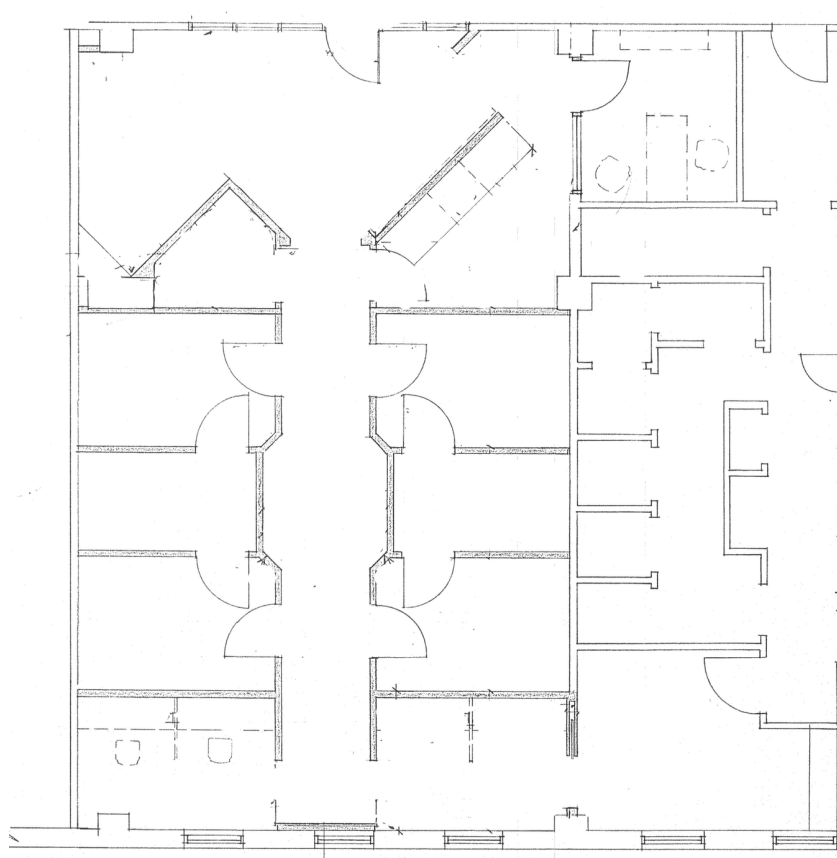
---

**Suite 135**  
**2,177 RSF**



## FIRST FLOOR

**Suite 120**  
**1,040 RSF**



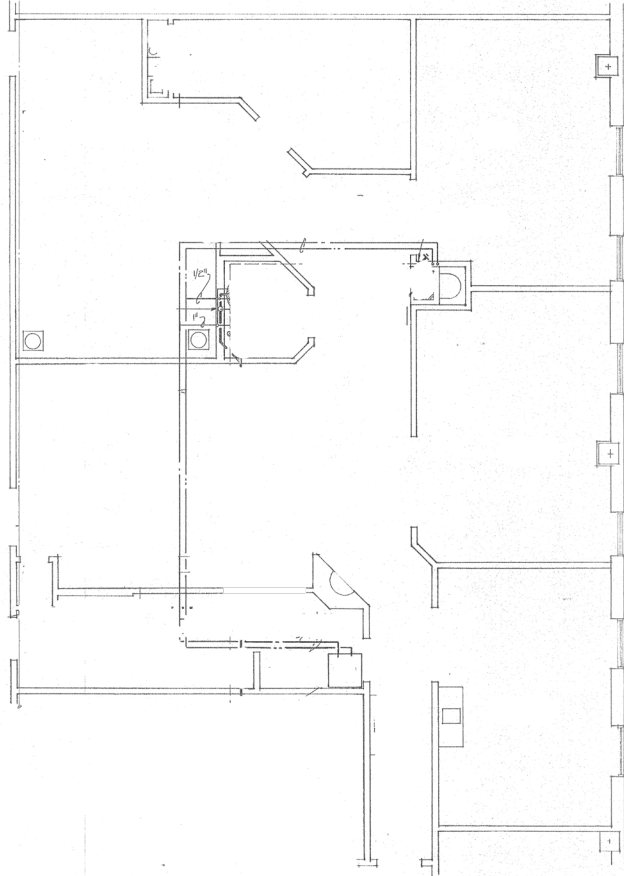
## FIRST FLOOR

---

**Suite 155**  
**1,256 RSF**

**Healthpeak**<sup>®</sup> | **DOC**  
**LISTED**  
**NYSE**

SCOTT DUNKLE, VICE PRESIDENT - LEASING  
414.367.5556 | [SDunkle@healthpeak.com](mailto:SDunkle@healthpeak.com)



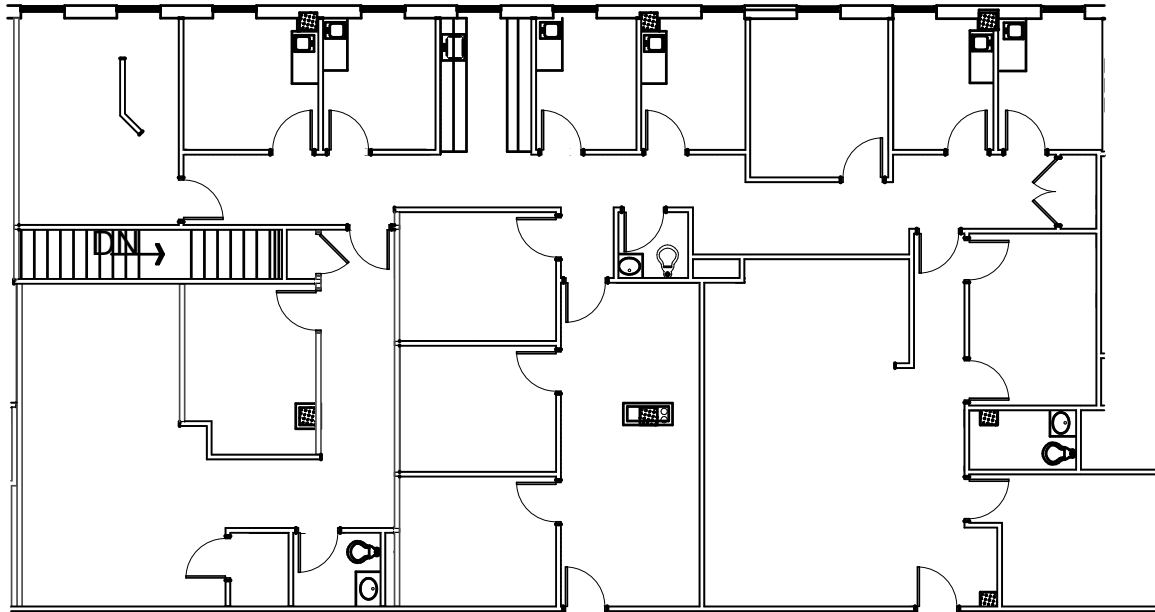
## FIRST FLOOR

---

**Suite 180**  
**1,810 RSF**

**Healthpeak**<sup>®</sup> | **DOC**  
**LISTED**  
**NYSE**

SCOTT DUNKLE, VICE PRESIDENT - LEASING  
414.367.5556 | [SDunkle@healthpeak.com](mailto:SDunkle@healthpeak.com)



## SECOND FLOOR

**Suite 215**  
**3,961 RSF**

## FIRST FLOOR

---

**Suite 130**  
**1,035 RSF**

*No floor plan available.*



Healthpeak®

DOC  
LISTED  
NYSE

SCOTT DUNKLE  
Direct 414.367.5556  
Mobile 407.620.1496  
SDunkle@healthpeak.com