 **JLL** SEE A BRIGHTER WAY

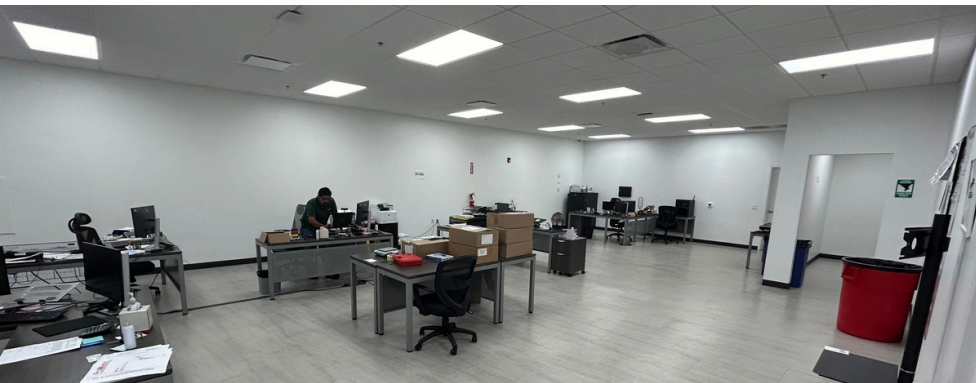
# For sublease

Renaissance Business Park

4136 Okeechobee Rd

Unit 47A-48A

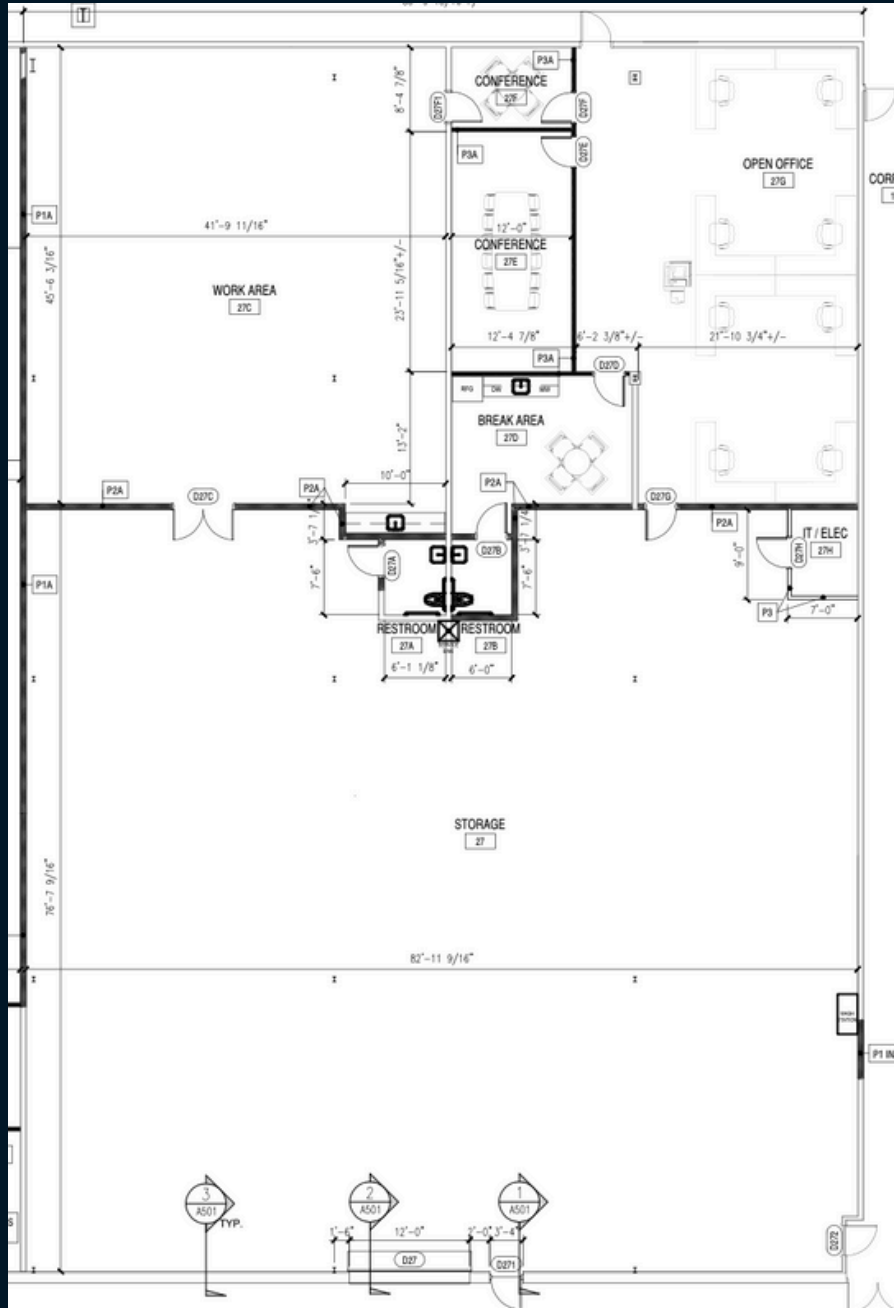
Fort Pierce, Florida 34947



## Property Features

- 11,278 total sf
- 2,500 sf open office
- 1,500 sf lab space
- Climate controlled and fully air-conditioned
- 16' x 16' overhead door
- 19'6" ceiling height
- Epoxy floors
- Abundant parking
- Four minutes from I-95 and nine minutes to Florida's turnpike
- Multiple bathrooms

Term expires April 2028  
Please call for pricing



**Rob Foster**  
 +1 561 787 7110  
 Rob.Foster@jll.com

**Ryann Foster**  
 +1 561 602 8072  
 Ryann.Foster@jll.com

**Sky Groden, SIOR**  
 +1 954 817 0188  
 Sky.Groden@jll.com