



For Lease

# ***MOOREFIELD I, II & III***

812, 808 & 804 Moorefield Park Drive,  
Chesterfield County, Virginia



# Moorefield I, II & III

## Office Building Portfolio

- 3 office buildings totalling 145,766 SF
- New common area updates!
- Newly renovated move-in ready suites
- Amenity-rich area off of Midlothian Turnpike
- One mile west of Powhite Parkway
- Ample parking ratio at 4/1000
- New institutional ownership
- \$18.50/SF, full service



Park setting



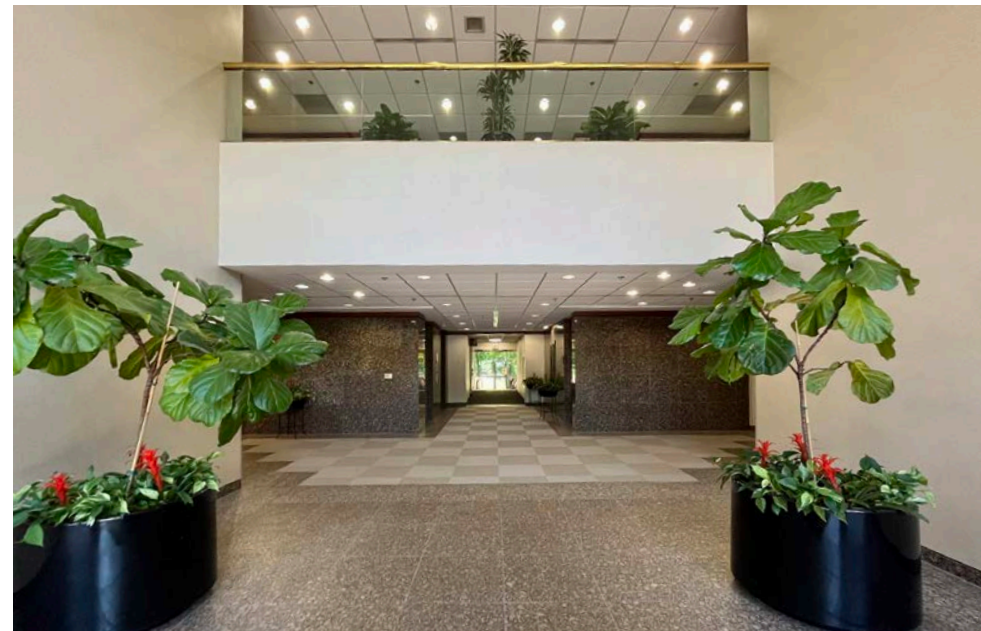
Walking paths



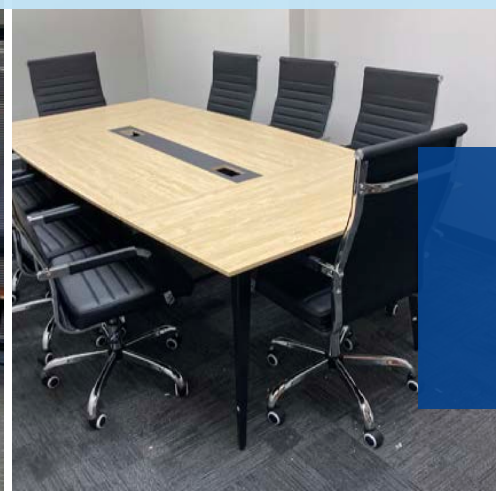
Lake views



Outdoor seating



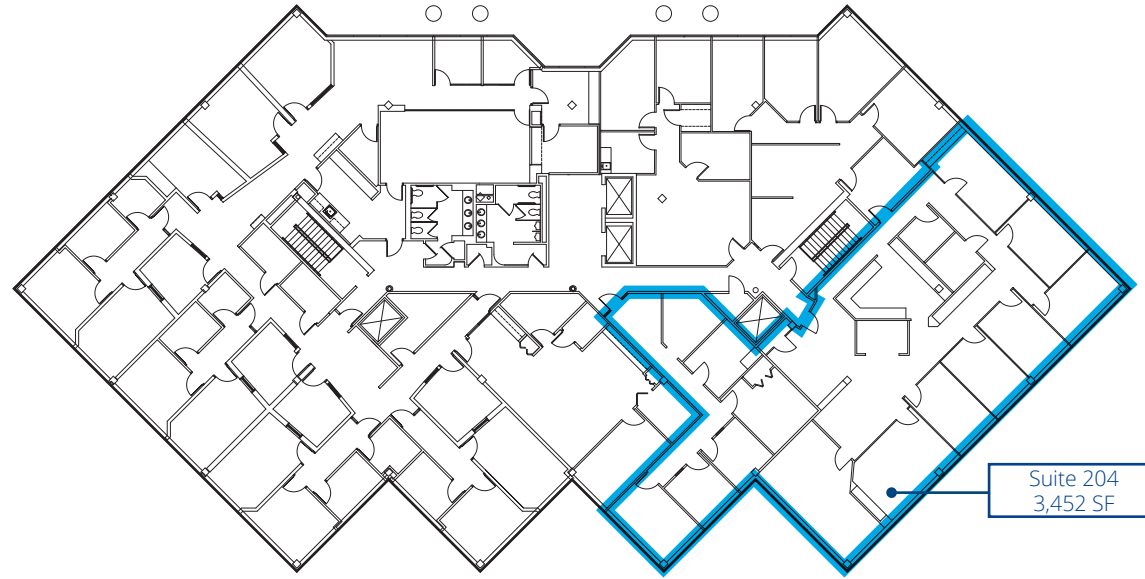
***New on-site grab and go café & shared conference room***



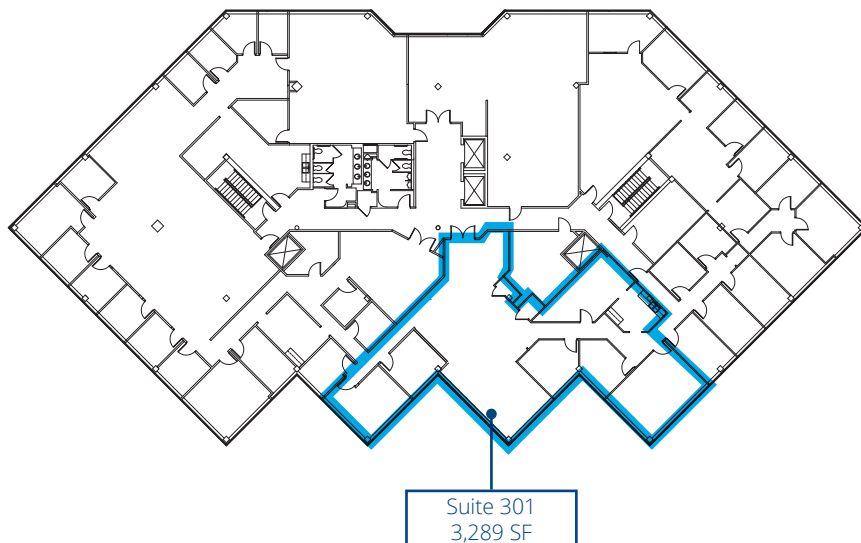
**Suites available for tenants from  
1,088 SF to 17,261 SF**

# Moorefield I Second Floor

Suite	SF
204	3,452
301	3,289



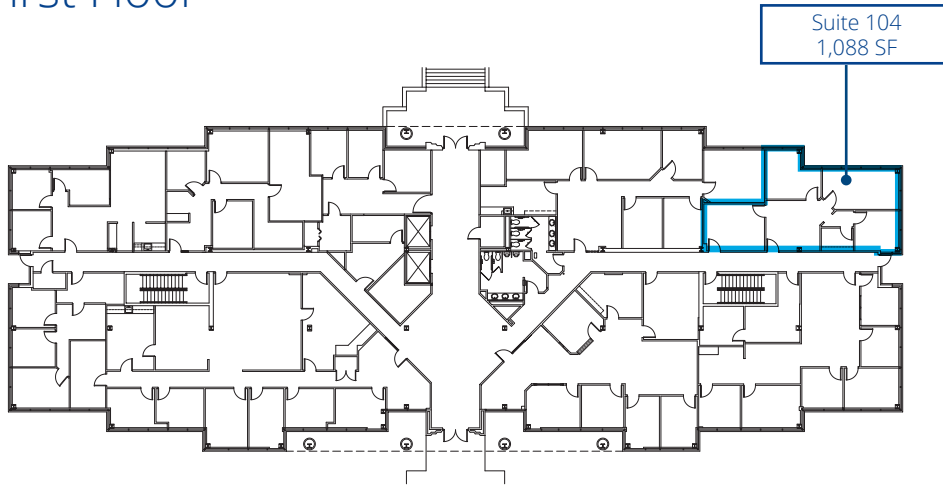
# Third Floor



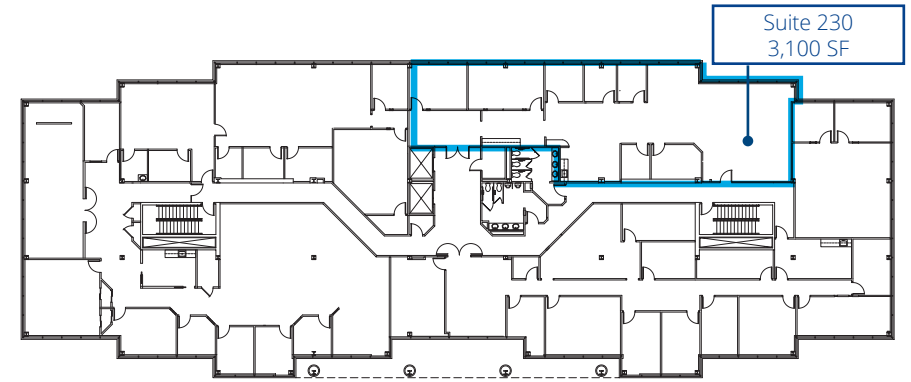
# Moorefield II

Suite	SF
104	1,088
230	3,100
300	17,261

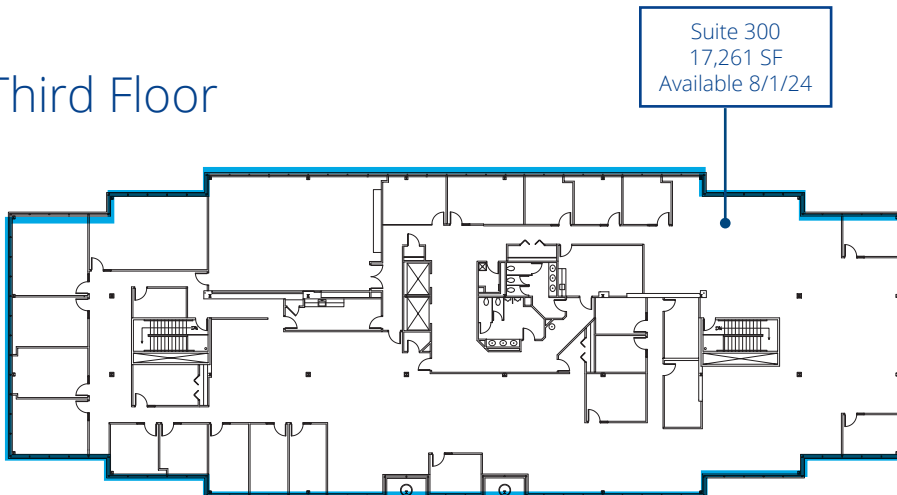
## First Floor



## Second Floor

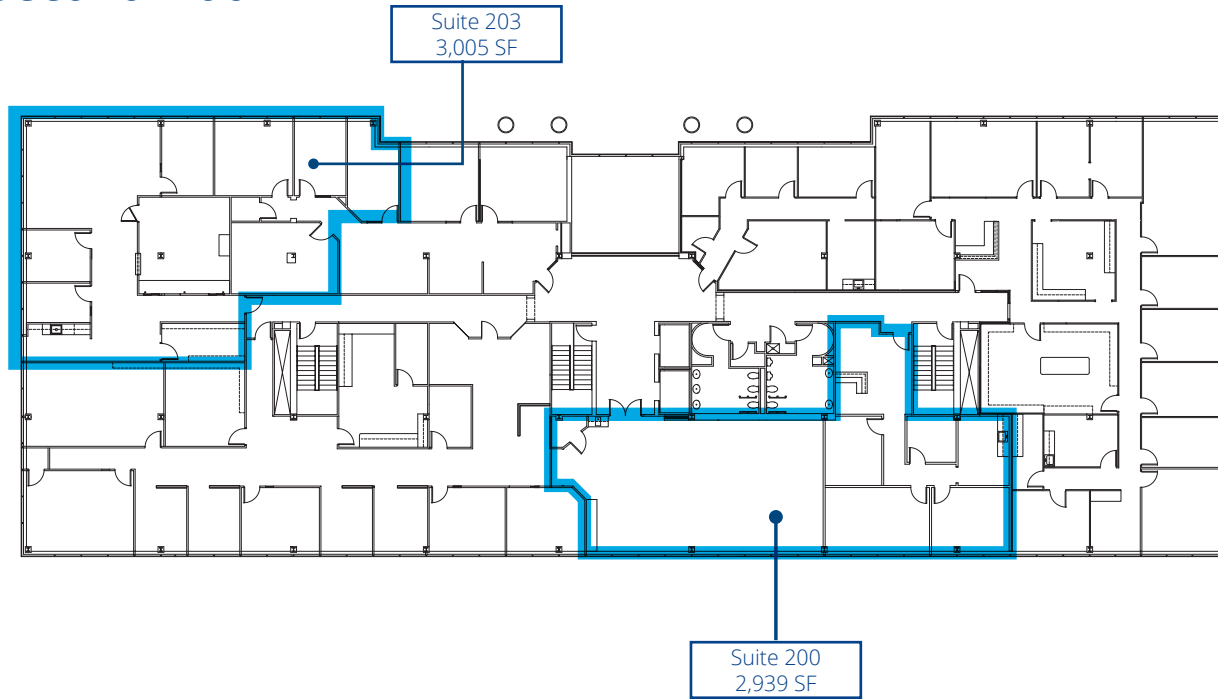


## Third Floor



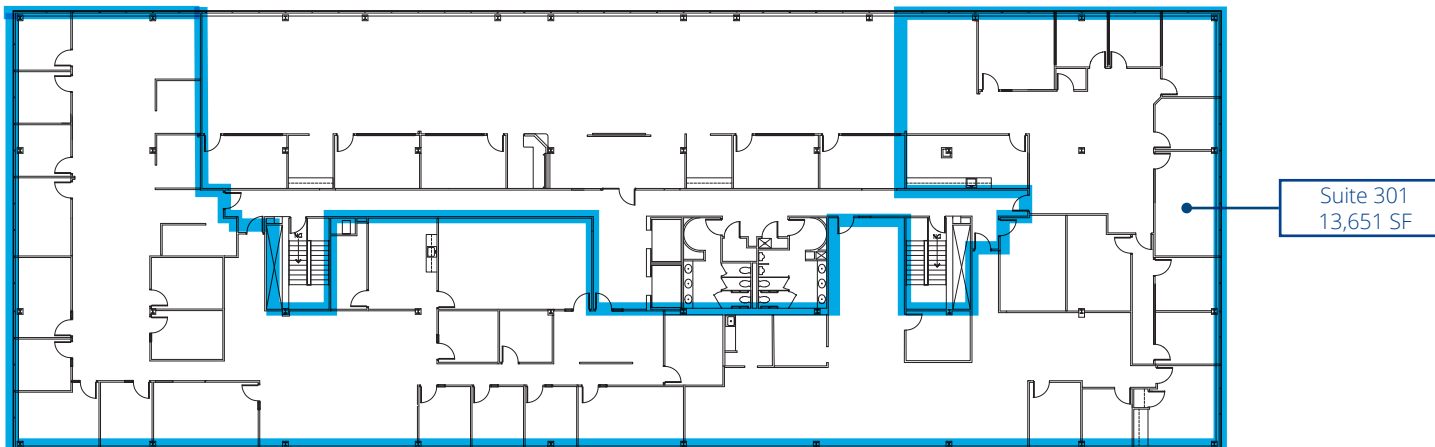
# Moorefield III

## Second Floor



Suite	SF
200	2,939
203	3,005
301	3,000
302	3,246
303	7,056

## Third Floor - Suites from 3,000 - 13,651



# Moorefield I, II & III



## Drivetimes

Chesterfield Towne Center	4 mins
Johnston Willis Hospital	5 mins
Stony Point	13 mins.
Chippenham Hospital	10 mins.
Downtown Richmond	16 mins.
Richmond International Airport	30 mins.

## Catherine Walker

Senior Associate  
 +1 434 941 8341  
 catherine.walker@colliers.com

## Gray Bryant

Senior Associate  
 +1 804 237 8087  
 gray.bryant@colliers.com

## Austin Makepeace

Associate  
 +1 804 467 3211  
 austin.makepeace@colliers.com



2221 Edward Holland Dr  
 Suite 600 | Richmond, VA  
 P: +1 804 320 5500  
 colliers.com/richmond