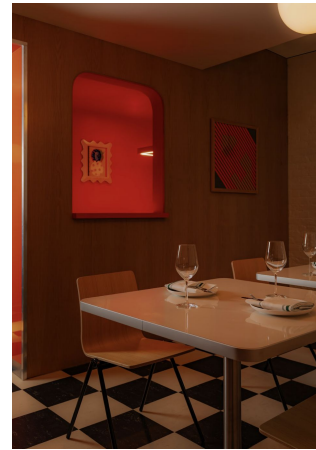
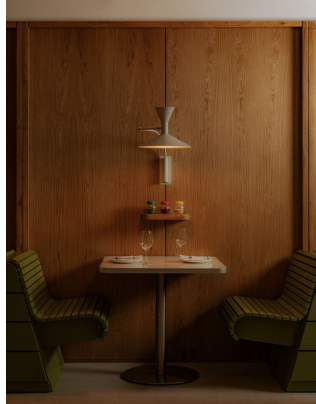


**157 West 18th Street: Key Money
Upon Request**

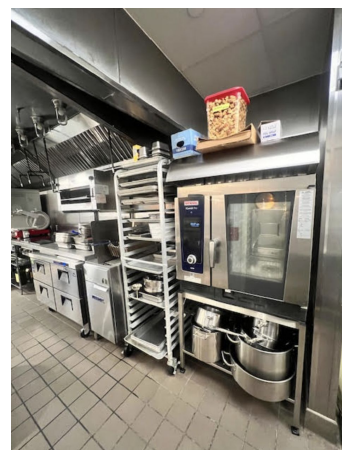
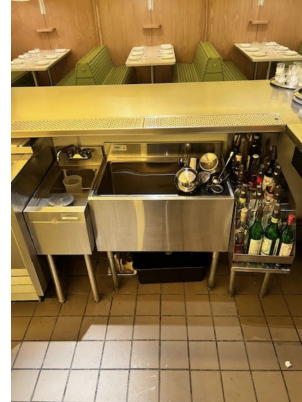


**2,518 SF Ground
Floor/ 1,966 SF Lower
Level (Selling)**

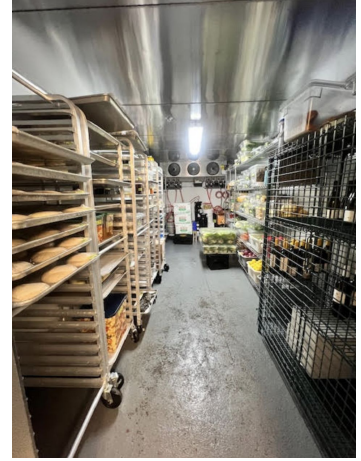
Front of House



Back of House Ground Floor

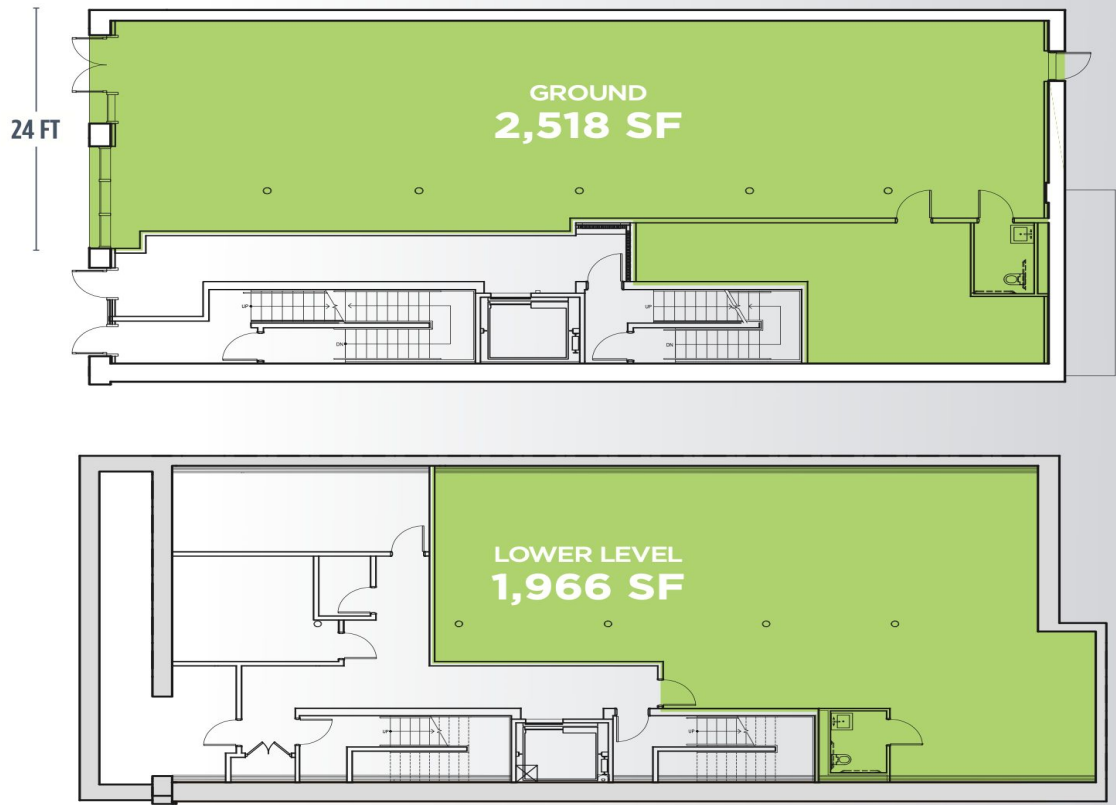


Back of House Basement

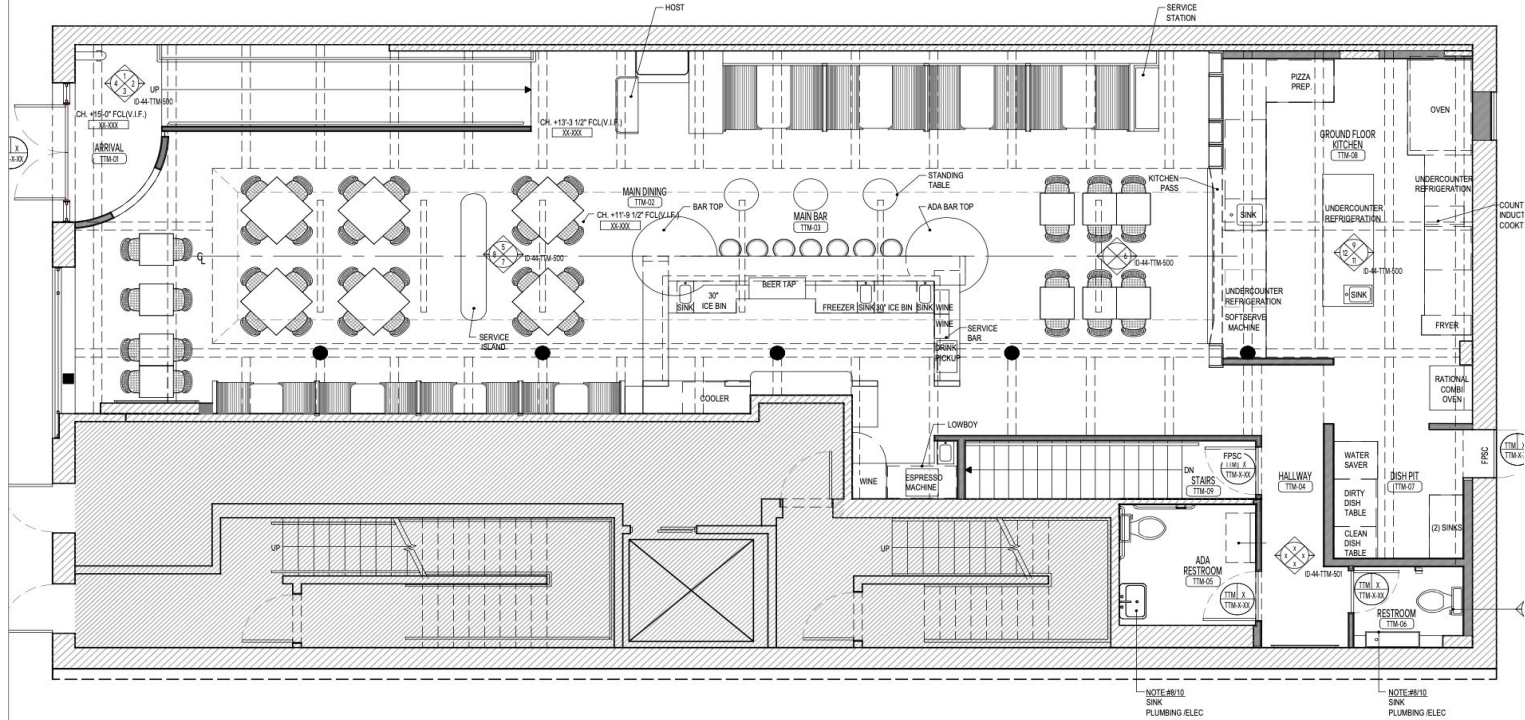


Floor Plans

WEST 18TH STREET



Ground Floor



Basement Level Plan Details:

- PREP KITCHEN (TM-7):** Includes a MIXER, 2 COMP, 8" SINK, and 31" ICE. Note: #8/10 SINK PLUMBING IELEC.
- CELLAR RESTROOM 2 (TM-14):** Located near the Prep Kitchen.
- CELLAR CORRIDOR (TM-6):** Central corridor with multiple doorways and stairs labeled "UP".
- PRIVATE DINING RM 1 (TM-10):** Features a large table and chairs. Notes: CH +9'-10" FCL(V.I.F.) XX-XXX, CH +9'-4" FCL(V.I.F.) XX-XXX, SOFFIT +8'-0" FCL(V.I.F.) XX-XXX.
- PRIVATE DINING RM 2 (TM-11):** Features a large table and chairs. Notes: CH HIGHEST POINT +6'-6" FCL(V.I.F.) XX-XXX, SOFFIT +8'-0" FCL(V.I.F.) XX-XXX, CH +9'-4" FCL(V.I.F.) XX-XXX.
- CELLAR RESTROOM (TM-13):** Located near the Cellar Corridor.
- POR BAR (TM-12):** Includes a 36" LOW BOY, 8" SINK, 30" ICE BIN, and 21" SINK.
- LOCKER:** Located near the Private Dining RM 1.
- STORAGE:** STORAGE BELOW GLASS WASHER BELOW SHELF ABOVE.

NOTE #8/10
SINK
PLUMRING /FL FC



Nick Martin - (678)-367-1383 - Nick@friendofchef.com