



# WAREHOUSE/STORAGE & INDUSTRIAL SPACE | FOR LEASE

MULTIPLE UNITS | CHESPAK DRIVE | GASTONIA

Three units, each one 1,500 SF, are available for lease in close proximity to I-85.

- Perfect for storage, business or hobby
- 12'x14' Drive-in doors
- 15'-17' clear heights
- Climate controlled units with restrooms are available
- Gated with 24/7 access

**JAMES RICE**  
c 859 953 1065  
[jrice@mecacommercial.com](mailto:jrice@mecacommercial.com)







## PROPERTY INFORMATION

### 1848 B:

- 1,500 sqft
- \$1,375 Monthly
- \$11.00 Rate/SF
- Has Restroom

### 1850 E:

- 1,500 sqft
- \$1,125 Monthly
- \$9.00 Rate/SF
- No Restroom

### 1842 B:

- 1,500 sqft
- \$1,125 Monthly
- \$9.00 Rate/SF
- No Restroom

### 1850 B:

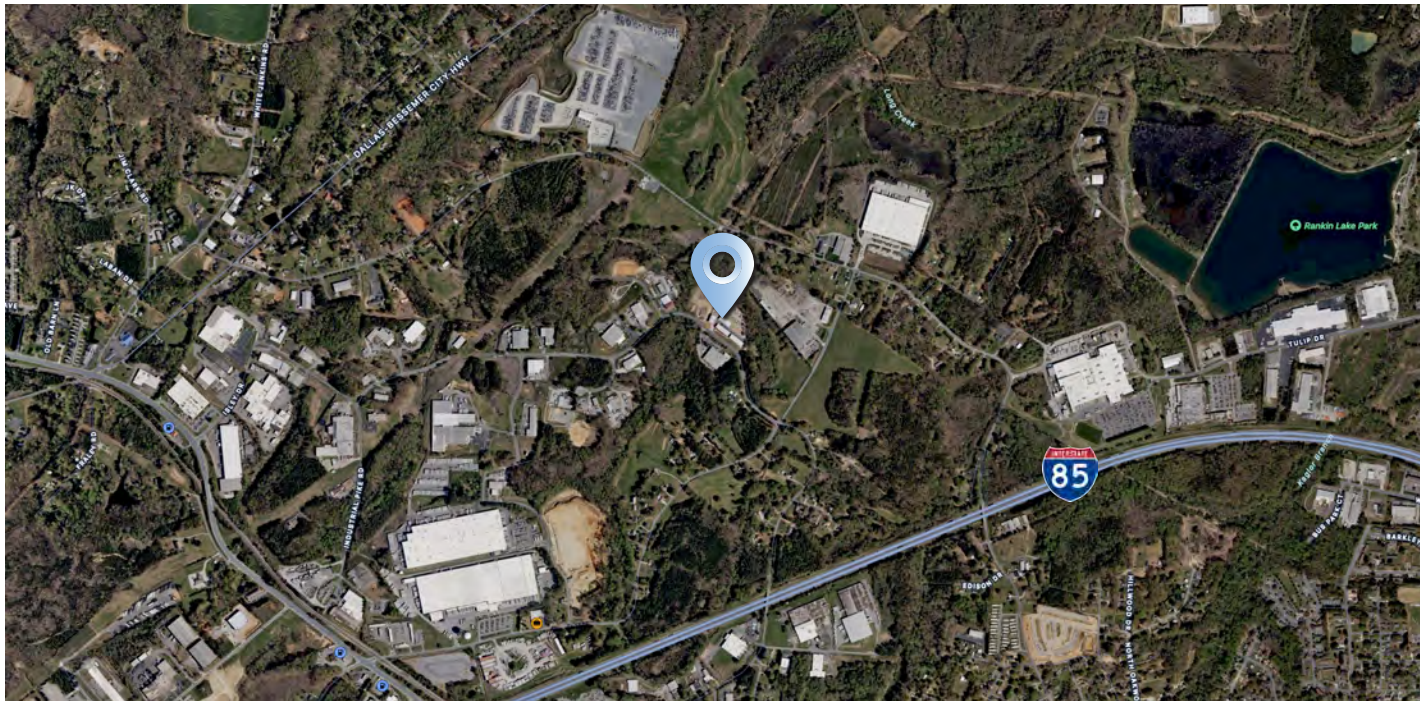
- 1,500 sqft
- \$1,375 Monthly
- \$11.00 Rate/SF
- Has Restroom

## UPCOMING SPACE

### 1848 D:

- 1,500 sqft
- \$1,375 Monthly
- \$11.00 Rate/SF
- Has Restroom

*Will be available as of 8/31/2025.*



[mecacommercial.com](http://mecacommercial.com)

© 2025 Metro Realty, LLC. All rights reserved. Metro Realty, LLC fully supports the principles of the Fair Housing Act and the Equal Opportunity Act.

\*The land acreage and/or building square footage was obtained from the County's Geographical Information System or other electronic resources. For exact square footage and/or acreage, we recommend that prior to purchase, a prospective Buyer/Tenant obtain a boundary survey or have the building measured professionally.



**MECA**  
COMMERCIAL REAL ESTATE