

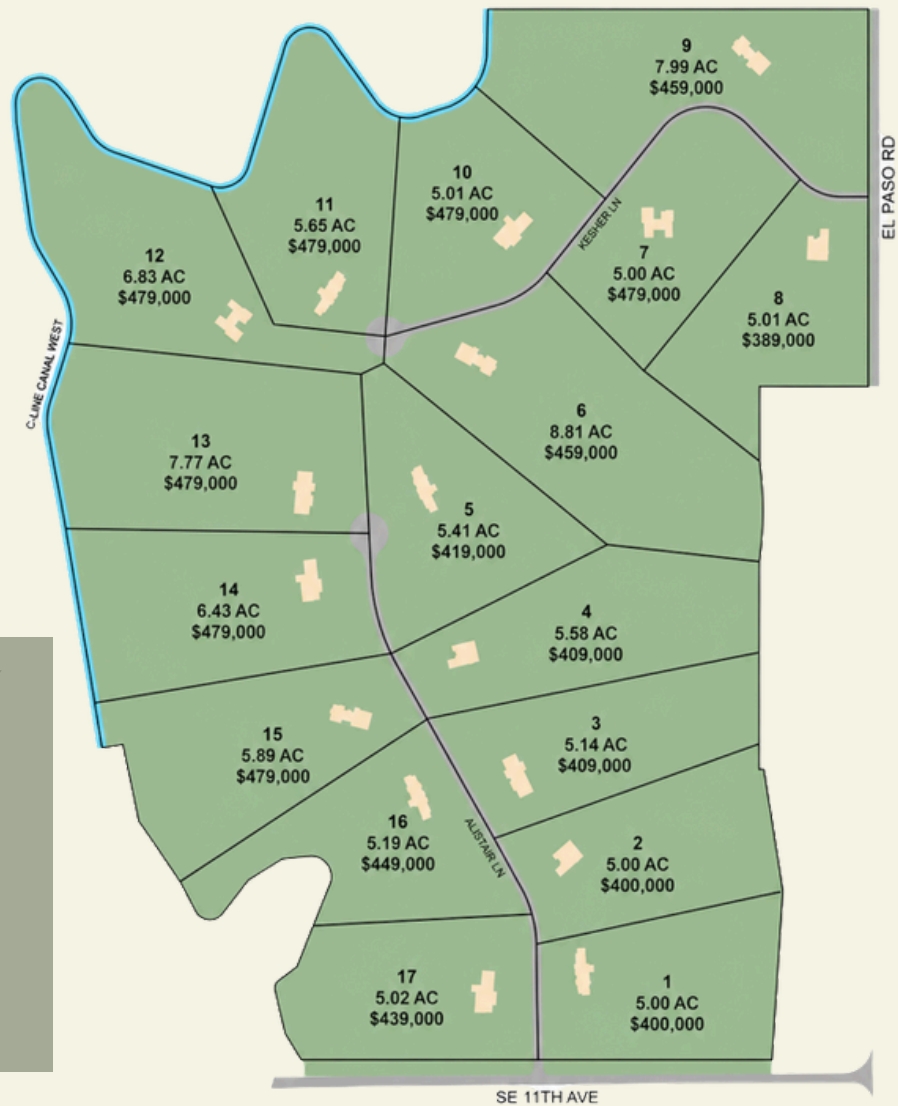


DESERT EDGE COMMERCIAL

DOBIE RD & EL PASO RD
CALDWELL, IDAHO

FOR SALE

DOBIE RANCH



ACCESS & CONNECTIVITY



- Frontage along El Paso Rd with direct access to SE 11th Ave
- Internal private lanes and cul-de-sacs designed for low traffic and privacy
- Easy connections to I-84 via Middleton and Caldwell interchanges
- Near Cañe Canal West and rural open space corridors
- Positioned for both quiet residential living and convenient regional access



ABOUT THE PROPERTY

This thoughtfully planned subdivision spans ±100 acres and features 17 estate-sized lots ranging from ±5 to 8 acres each. Dobie Ranch blends open space and rural character with a community design that provides privacy, generous lot sizes, and an ideal setting for custom homes.

IMAGE FOR ILLUSTRATIVE PURPOSES ONLY



IMAGE FOR ILLUSTRATIVE PURPOSES ONLY

SITE COMPONENTS



100 ACRES

- ±100-acre planned subdivision
- 17 estate-sized lots ranging from ±5–8 acres each
- Designed for custom homes with privacy and open space
- Rural character with proximity to Middleton/Caldwell amenities

GET IN TOUCH

NATALIE JONSSON

208.247.8200

www.desertedgecommercial.com



AREA HIGHLIGHTS



DESERT EDGE
COMMERCIAL

NATALIE JONSSON

208.247.8200

Natalie@desertedgecommercial.com

www.desertedgecommercial.com