



CUSHMAN &
WAKEFIELD



1,932 SF AVAILABLE
FOR SUBLEASE

11910

**GREENVILLE
AVENUE
SUITE B101**

Forest Green Office Park
Dallas, Texas

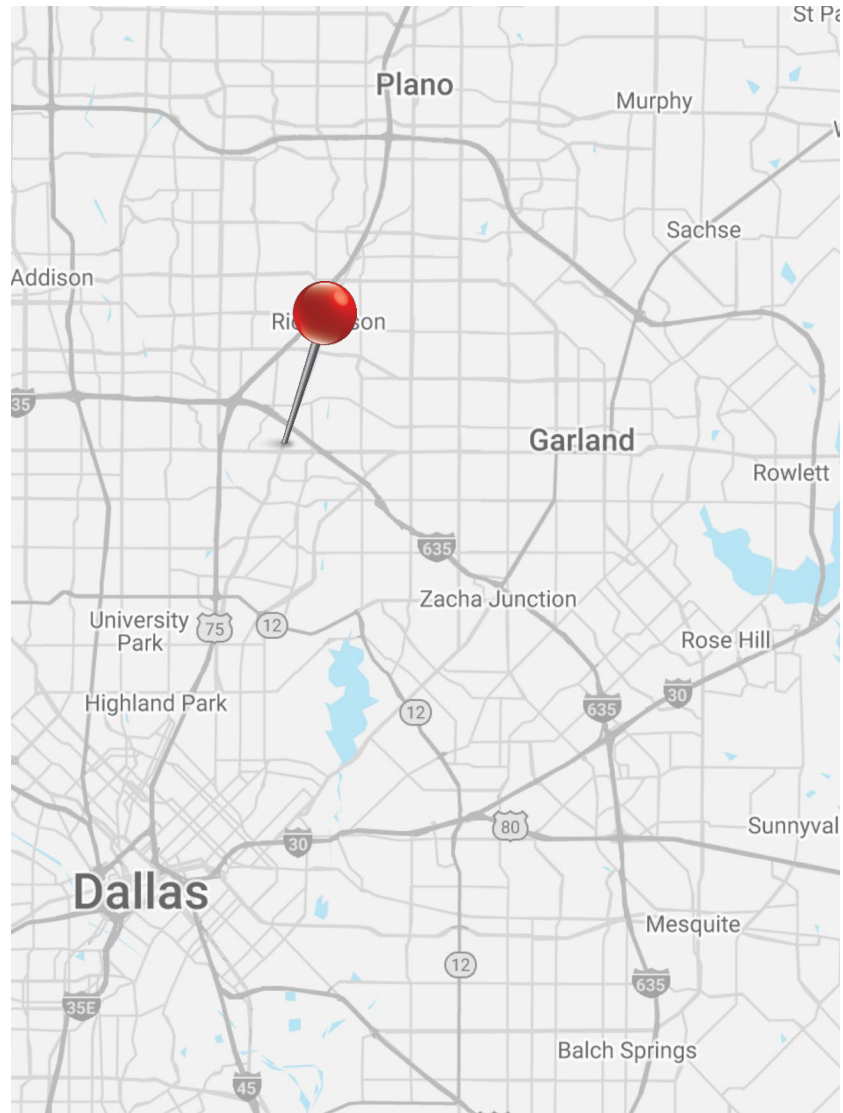


ABOUT THE BUILDING

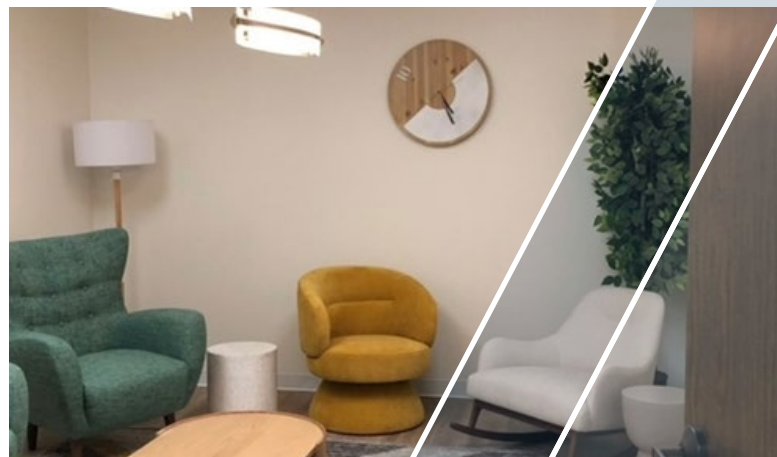
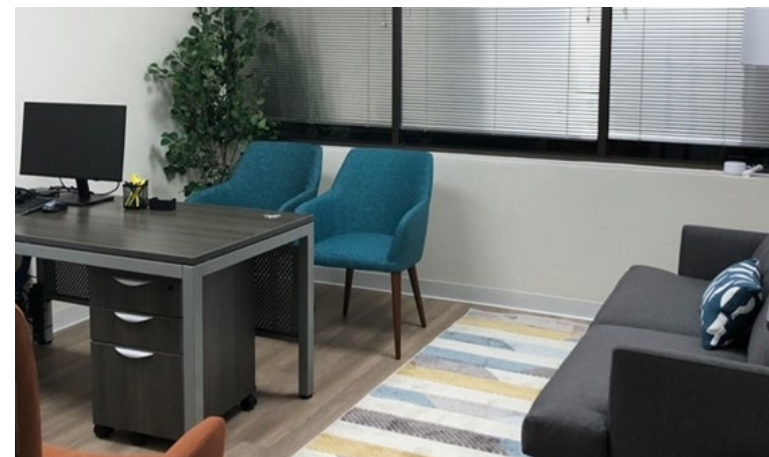
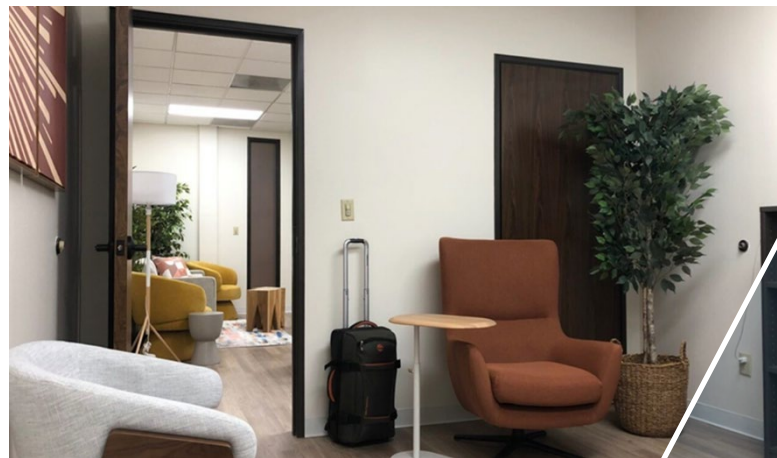
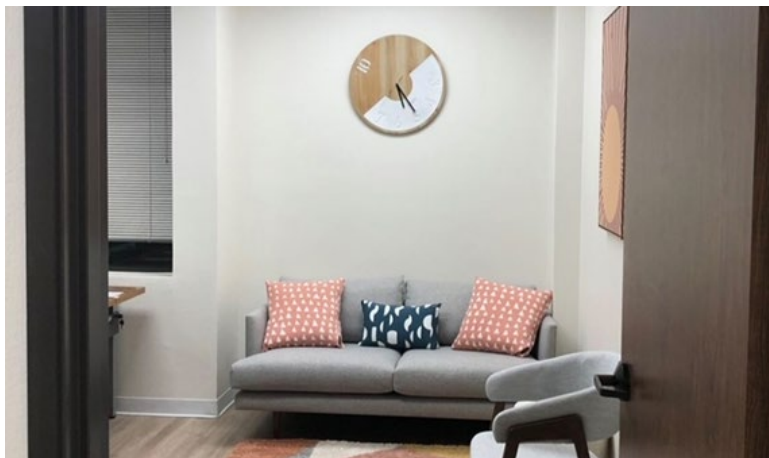


SUBLEASE HIGHLIGHTS

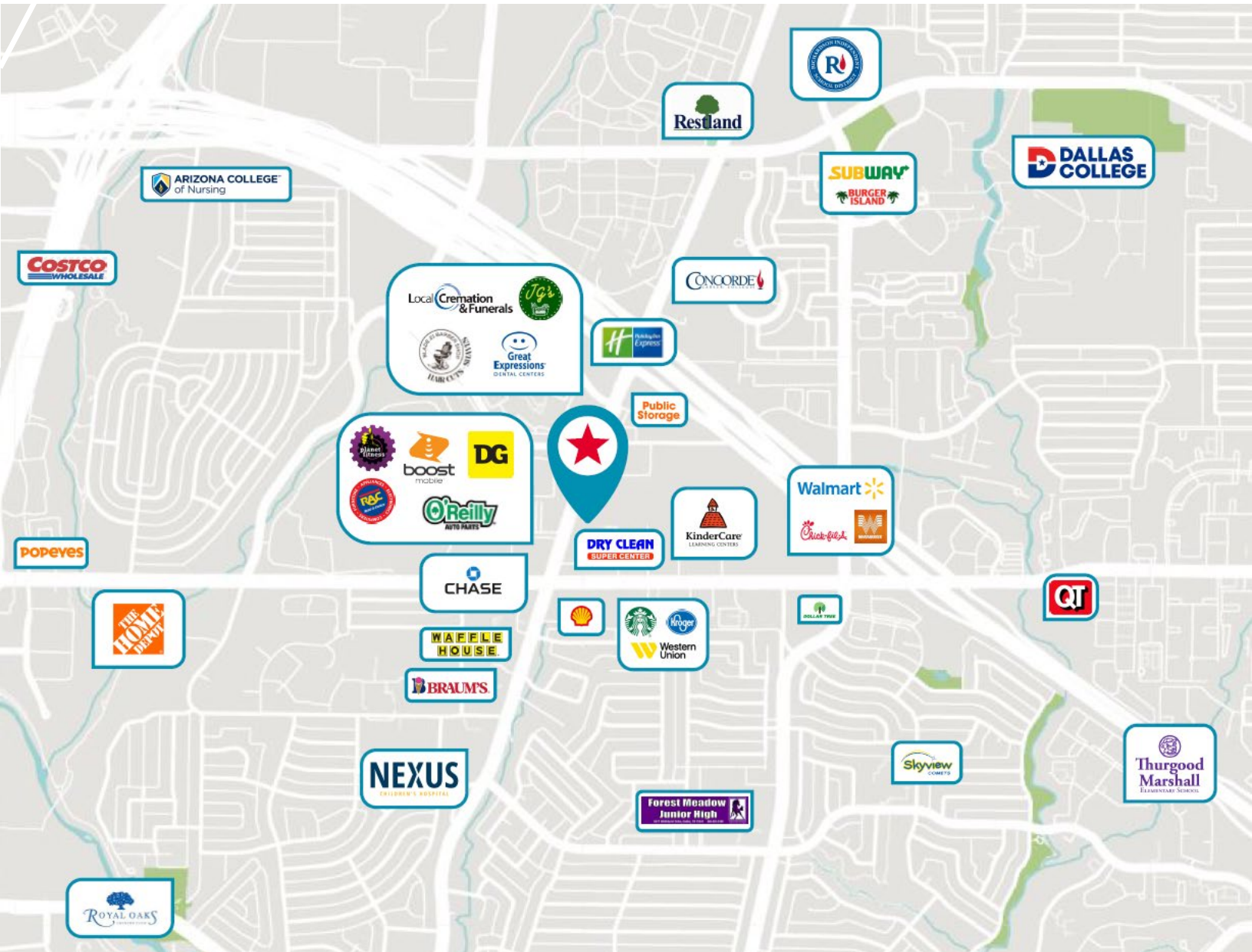
- 1,932 SF For Sublease
- Four (4) private offices
- Open work area
- Conference room and kitchenette located in suite
- Easy access from I-635
- Sublease expiration: 11/31/27
- Sublease rate: \$13.25/SF



FLOORPLAN & SUITE PHOTOS



LOCATION



DEMOGRAPHICS

383,657

Population

\$98,968

Median Household
Income

36

Median Age

CONTACT

CURTIS CHICKERNEO

Director

+1 602 229 5932

curtis.chickerneo@cushwake.com

KARLA OROZCO

Senior Associate

+1 972 663 9987

karla.a.orozco@cushwake.com