

Crossroads Medical Center

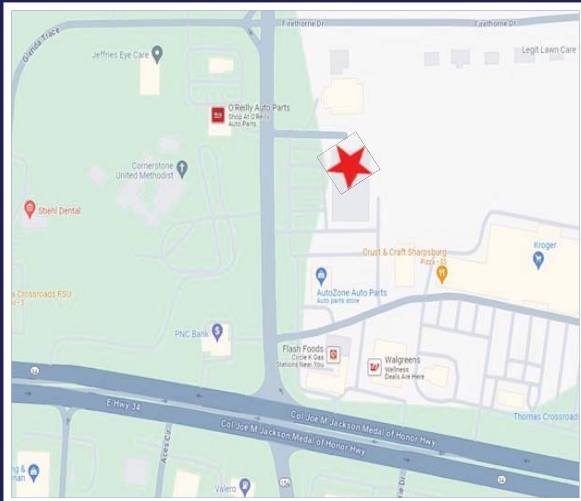


2959 Sharpsburg McCullum Rd
Newnan, GA 30265
(Coweta County)

Space Available: 2,500sf - 11,282sf
Lease Rate: \$20.00/sf (NNN)

Property Details:

- Built Out Medical Suites Available: 2,500sf - 11,282sf
- Suite 101 / 102: 2,500sf (Max Contiguous 11,282sf)
- Suite T: 7,576sf
(Dedicated Side Main Entrance to Terrace Level)
- Existing Medical Tenants Include: Vein Specialist, MedSpa and Endocrinology
- Excellent Visibility on Sharpsburg McCullum Road with Monument Signage
- Proximity to I-85 and Piedmont Newnan Hospital Campus



For more information, please contact:

Michael Ulin

(c) 404-966-6698

(o) 770-393-2006

mulin@rg-re.com

Jay Hammond

(c) 404-840-6225

(o) 770-393-2006

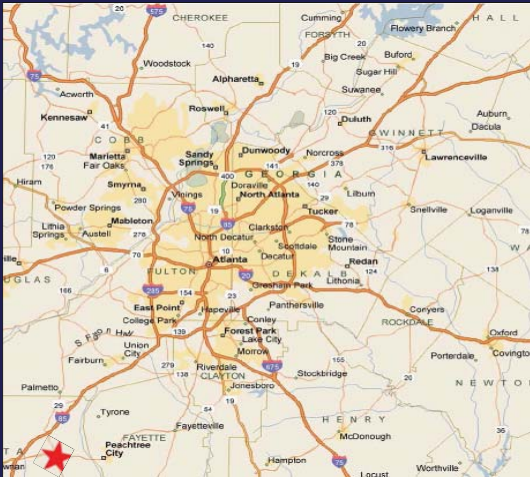
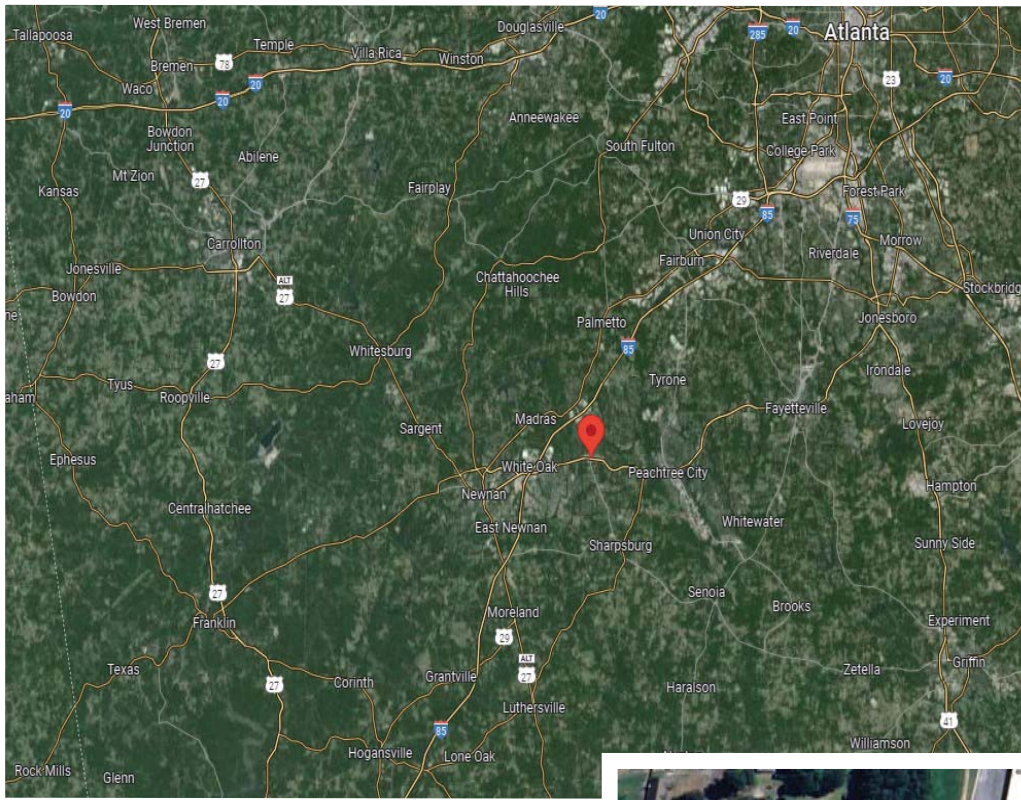
jhammond@rg-re.com



1835 Savoy Drive | Suite 105 | Atlanta, GA 30341 | Work. 770-393-2006 | www.rg-re.com

(Information contained herein has been obtained from sources we deem reliable. We have no reason to doubt its accuracy, but we do not guarantee it.)

2959 Sharpsburg McCullum Road



For more information, please contact:

Michael Ulin

(c) 404-966-6698

(o) 770-393-2006

mulin@rg-re.com

Jay Hammond

(c) 404-840-6225

(o) 770-393-2006

jhammond@rg-re.com

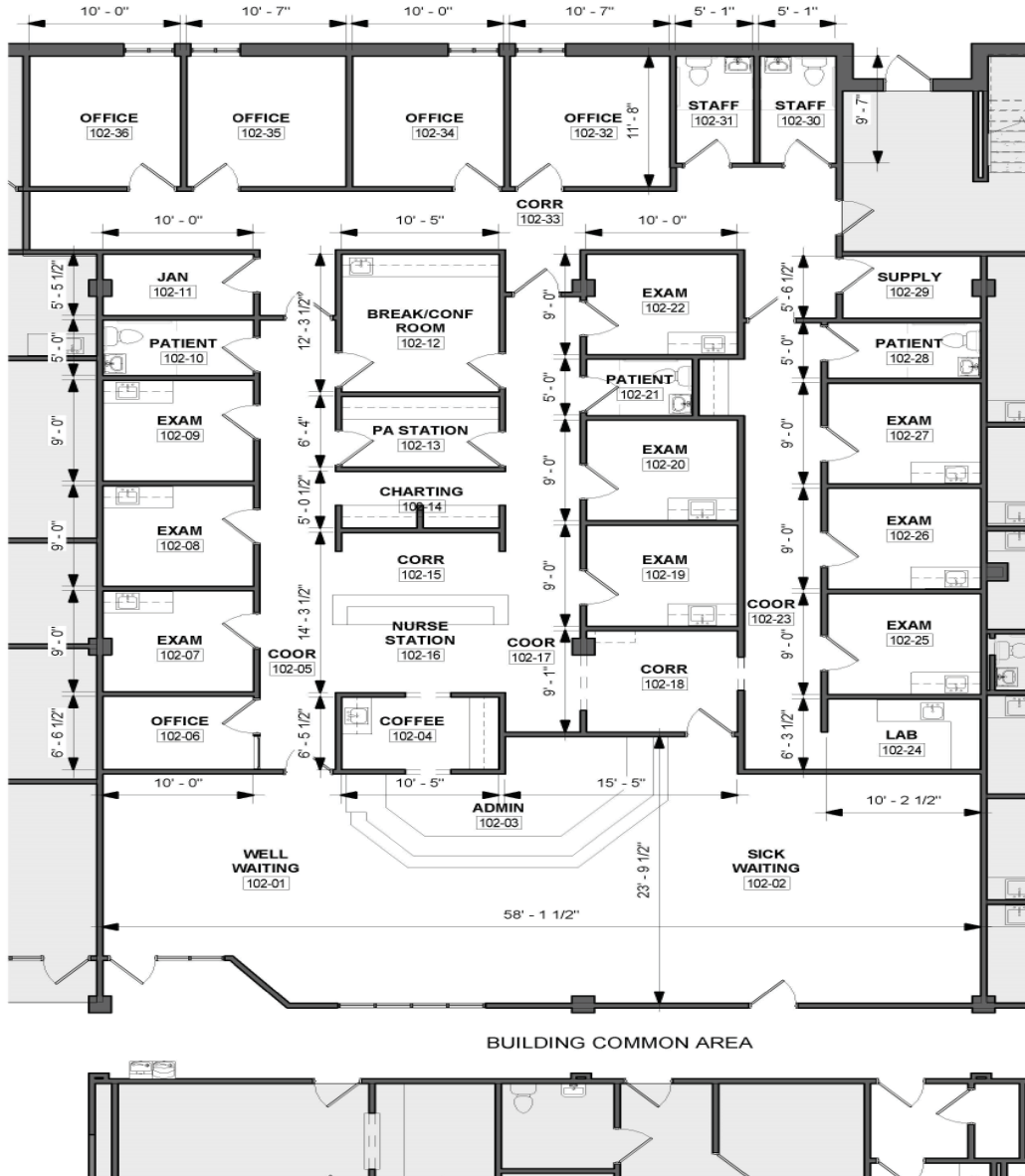


1835 Savoy Drive | Suite 105 | Atlanta, GA 30341 | Work. 770-393-2006 | www.rg-re.com

(Information contained herein has been obtained from sources we deem reliable. We have no reason to doubt its accuracy, but we do not guarantee it.)

2959 Sharpsburg McCullum Road

Suite 101
5,494 SF



FLOOR PLAN - SUITE 101
5,494 RSF



For more information, please contact:

Michael Ulin

(c) 404-966-6698

(o) 770-393-2006

mulin@rg-re.com

Jay Hammond

(c) 404-840-6225

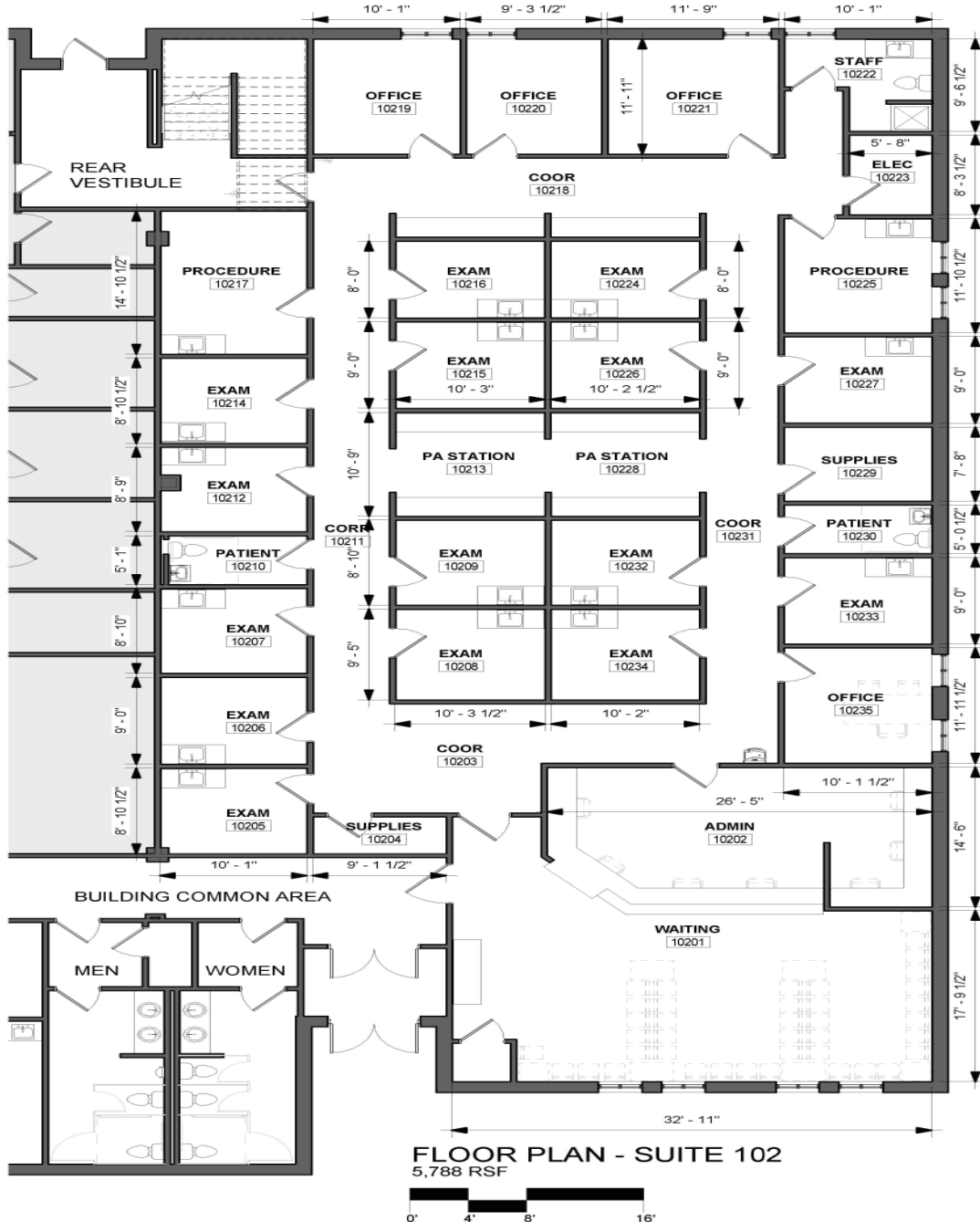
(o) 770-393-2006

jhammond@rg-re.com



2959 Sharpsburg McCullum Road

Suite 102
5,788 SF



For more information, please contact:

Michael Ulin

(c) 404-966-6698

(o) 770-393-2006

mulin@rg-re.com

Jay Hammond

(c) 404-840-6225

(o) 770-393-2006

jhammond@rg-re.com



2959 Sharpsburg McCullum Road

**Suite T
(Terrace Level)
7,576 SF**



For more information, please contact:

Michael Ulin

(c) 404-966-6698

(o) 770-393-2006

mulin@rg-re.com

Jay Hammond

(c) 404-840-6225

(o) 770-393-2006

jhammond@rg-re.com

