

FOR LEASE

Panorama City Plaza

8267 Sepulveda Blvd., Panorama City, CA 91402



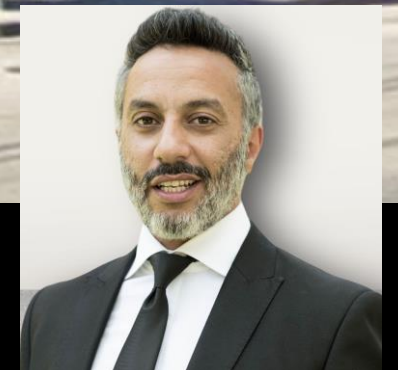
NAI Capital

Commercial Real Estate Services, Worldwide

Direct: 818.473.9994

Sam Nobel

Associate Broker
DRE 01995634



No warranty, express or implied, is made as to the accuracy of the information contained herein. This information is submitted subject to errors, omissions, change of price, rental or other conditions, withdrawal without notice, and is subject to any special listing conditions imposed by our principals. Cooperating brokers, buyers, tenants and other parties who receive this document should not rely on it, but should use it as a starting point of analysis, and should independently confirm the accuracy of the information contained herein through a due diligence review of the books, records, files and documents that constitute reliable sources of the information described herein. Logos are for identification purposes only and may be trademarks of their respective companies.

NAI Capital, Inc. Cal DRE Lic. #02130474.

PANORAMA CITY

SITE



Prime
Location

Heavy Traffic Area

SEPULVEDA BLVD

ROSCOE BLVD

Heart of The Valley

118

5

14

405

NORTH HILLS

PARTHENIA ST

LANGDON AVE

SITE

ROSCOE BLVD

PANORAMA CITY

VAN NUYS

SEPULVEDA BLVD

NORTH HILLS

ARLINGTON

SITE



ROSCOE BLVD



PANORAMA CITY

SEPULVEDA BLVD



VAN NUYS

SATICOY ST



Anchored Tenants

National leading chain



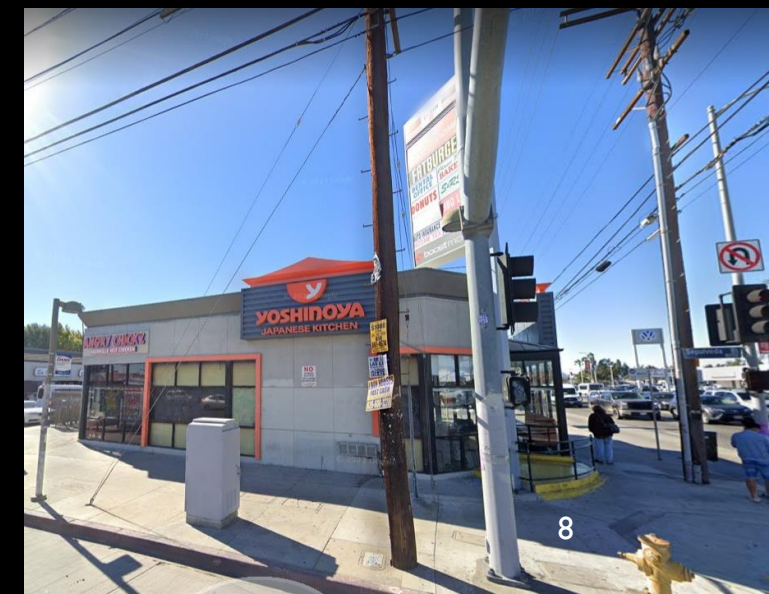
Anchored Tenants

National leading chain





ANCHOR TENANTS



Highly Desired Hair Salon Available



S&R
Detox Hearth Spa

Good Day
DONUTS
BREAKFAST SERVED ALL DAY

**DAISY'S BARBERSHOP
& SALON**
818 810-8618

**PANADERIA
La Antigua**
(PAN GUATEMALTECO Y MEXICANO)
DESAYUNOS · ALMUERZOS · LICUADOS

- 800 SF Hair Salon Space
- High Traffic Area
- Secured Gate
- Inline next to 7-11

FOR LEASE

Panorama City Plaza

8267 Sepulveda Blvd., Panorama City, CA 91402



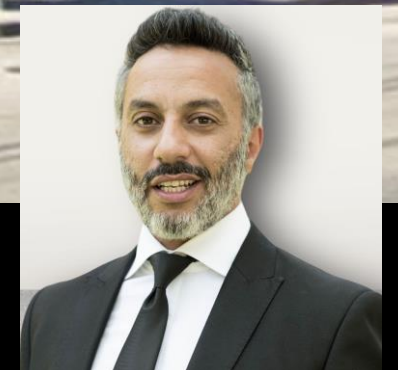
NAI Capital

Commercial Real Estate Services, Worldwide

Direct: 818.473.9994

Sam Nobel

Associate Broker
DRE 01995634



No warranty, express or implied, is made as to the accuracy of the information contained herein. This information is submitted subject to errors, omissions, change of price, rental or other conditions, withdrawal without notice, and is subject to any special listing conditions imposed by our principals. Cooperating brokers, buyers, tenants and other parties who receive this document should not rely on it, but should use it as a starting point of analysis, and should independently confirm the accuracy of the information contained herein through a due diligence review of the books, records, files and documents that constitute reliable sources of the information described herein. Logos are for identification purposes only and may be trademarks of their respective companies.

NAI Capital, Inc. Cal DRE Lic. #02130474.