



11.46 Ac Zoned Commercial- Jefferson Bypass

56 Old 82 Rd, Jefferson, GA 30549



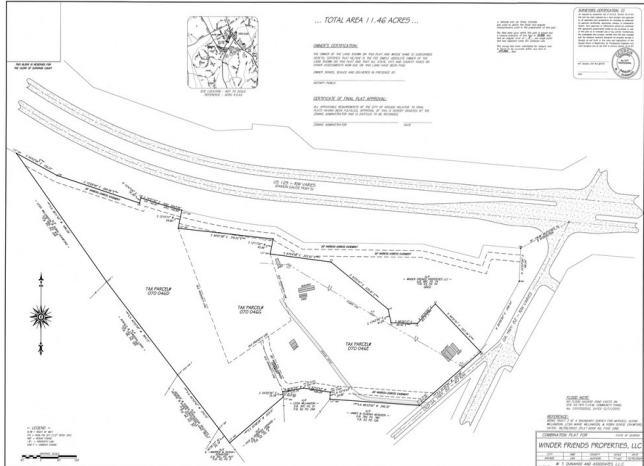
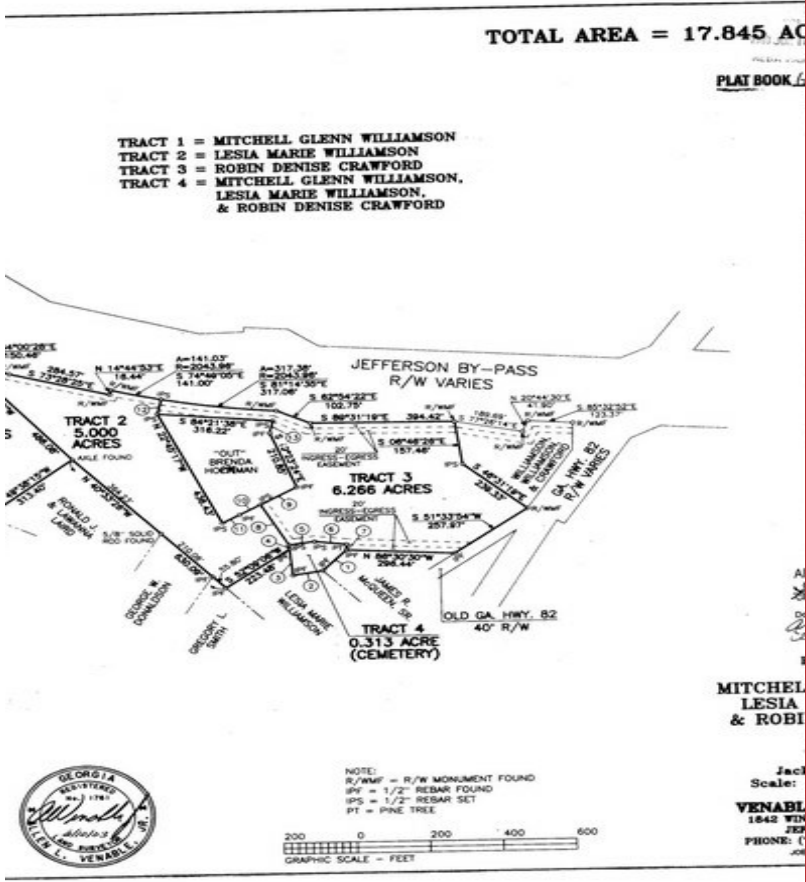
Wayne Bartlett, CCIM
Progressive Realty LLC
665 Exchange Cir, Suite 100, Bethlehem, GA 30620
wayneb118@gmail.com
(770) 307-6466

11.46 Ac Zoned Commercial-Jefferson Bypass

\$695,000

Mostly open land that fronts along the Jefferson Bypass and Old Hwy. 82. Great visibility to the Bypass. Property would be ideal for small industrial park or single tenant light industrial type uses....

Commercial zoning in place with the City of Arcade. This 11.46 Acres would be ideal for light industrial type uses, mini warehouses, or potential storage yard. The City of Arcade would need to be consulted to determine if specific uses are allowed. Property is very visible from the Jefferson Bypass with curb cut available along Hwy. 82. Property is mostly all open with gently sloping to level topography. Public Water is available. Sewer is NOT available in this location. Property...



Price:	\$695,000
Property Type:	Land
Property Subtype:	Commercial
Proposed Use:	Industrial Park
Sale Type:	Investment or Owner User
Total Lot Size:	11.46 AC
No. Lots:	1
Zoning Description:	Commercial
APN / Parcel ID:	-7- 046E, G & D



56 Old 82 Rd, Jefferson, GA 30549

Mostly open land that fronts along the Jefferson Bypass and Old Hwy. 82. Great visibility to the Bypass. Property would be ideal for small industrial park or single tenant light industrial type uses.

Property Photos

298

