



FOR LEASE

# 5450 Louie Ln, Suite 102

RENO, NV 89511



**\$0.95**

PSF PER MO.  
LEASE RATE  
(MG)

**±6.6K**

SQUARE FEET  
AVAILABLE

**1** DOCK-HIGH  
DOOR

**SHAWN JAENSON**

775.470.8865

[shawn.jaenson@kidder.com](mailto:shawn.jaenson@kidder.com)

LIC N° S.0188002



AVAILABLE  
NOW

**±886**

SF OFFICE  
SPACE

**1** GRADE LEVEL  
ROLL-UP DOOR

**STEVE KUCERA, SIOR, CCIM**

775.470.8866

[steve.kucera@kidder.com](mailto:steve.kucera@kidder.com)

LIC N° S.0172550

**Kidder  
Mathews**

This information supplied herein is from sources we deem reliable. It is provided without any representation, warranty, or guarantee, expressed or implied as to its accuracy. Prospective Buyer or Tenant should conduct an independent investigation and verification of all matters deemed to be material, including, but not limited to, statements of income and expenses. Consult your attorney, accountant, or other professional advisor.

[KIDDER.COM](http://KIDDER.COM)

**FOR LEASE**

# 5450 Louie Ln, Suite 102

RENO, NV 89511

## Features

**LEASE RATE** \$0.95 PSF,  
Modified Gross (MG)

**±6,655 SF** industrial flex space

**±886 SF** office

**AVAILABLE** now

**ONE** dock-high door with edge of  
dock leveler

**ONE** grade level (12' X 14') roll up  
door

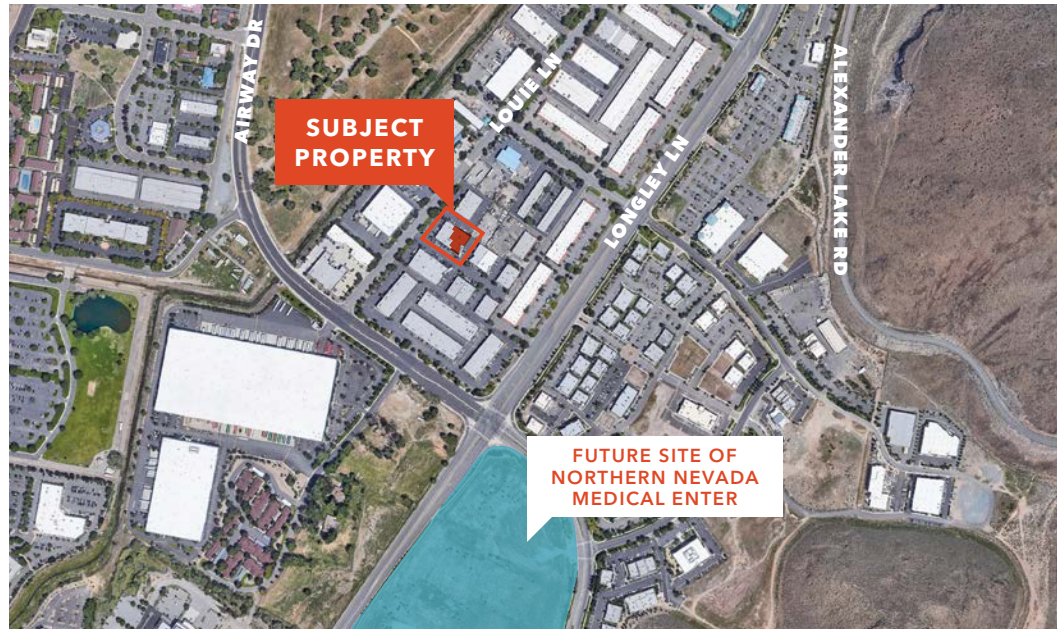
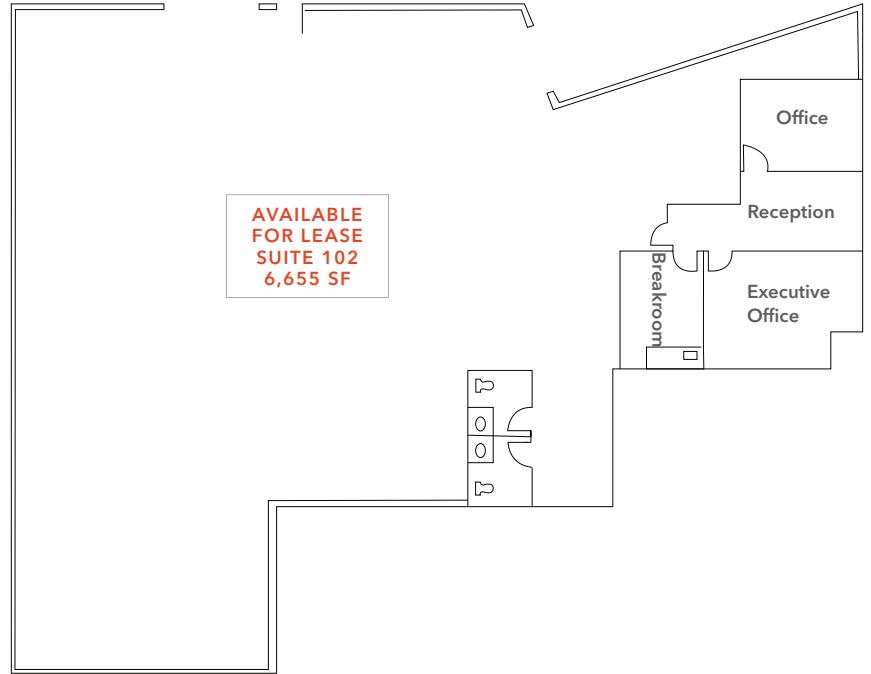
**15'** clear height

**POWER** 200 amps, 220 volts,  
3-phase

**REZNOR** heater

**SWAMP** cooler

## Floor Plan



**SHAWN JAENSON**

775.470.8865

[shawn.jaenson@kidder.com](mailto:shawn.jaenson@kidder.com)

LIC N° S.0188002

**STEVE KUCERA, SIOR, CCIM**

775.470.8866

[steve.kucera@kidder.com](mailto:steve.kucera@kidder.com)

LIC N° S.0172550

[KIDDER.COM](http://KIDDER.COM)

**km** Kidder  
Mathews

This information supplied herein is from sources we deem reliable. It is provided without any representation, warranty, or guarantee, expressed or implied as to its accuracy. Prospective Buyer or Tenant should conduct an independent investigation and verification of all matters deemed to be material, including, but not limited to, statements of income and expenses. Consult your attorney, accountant, or other professional advisor.