

GROUND LEASE AVAILABLE

84-276 Ikuone Place



**COLDWELL BANKER
COMMERCIAL
REALTY**

Waianae, HI 96792

PROPERTY OVERVIEW



Ground Lease Commercial Investment Opportunity!

84-276 Ikuone Pl Waianae, HI 96792

Land Size: 1.11 acres (48,351 SF)

Lease Rent: \$12,000 per month (Ground Lease)

Term: 10-30+ Years

TMK 1-8-4-24-47

Zoning: Country

RPT: \$3,341.10 (2023)

Residential (3,132 SF)

- 5 bedrooms 5 baths

Flat/Bank Barn (5,018 SF)

- Storage



Andriana Honda (S)
REALTOR® RS-86471
ANDRIANA.HONDA@CBREALTY.COM

Jordan P. Chow (PB, CCIM)
RB-21901
JORDANPCHOW@GMAIL.COM

Darrin Araki (S)
REALTOR® RS-61353
DARRIN.ARAKI@CBPACIFIC.COM

Flat Barn



Bank Barn



Residential



COLDWELL BANKER
COMMERCIAL
REALTY

Andriana Honda (S)
REALTOR® RS-86471
ANDRIANA.HONDA@CBREALTY.COM

Jordan P. Chow (PB, CCIM)
RB-21901
JORDANPCHOW@GMAIL.COM

Darrin Araki (S)
REALTOR® RS-61353
DARRIN.ARAKI@CBPACIFIC.COM

PROPERTY HIGHLIGHTS



Potential value-add property available with opportunity to ground lease a 1.11 acre site with 5 bedroom 5 bath dwellings, flat barn, and bank barn per C&C public records. Build to suit unfinished space! Lots of ground space in the back of the property for storage and vehicles. Bank barn specially built-out with organized compartments and storage containers. Live and work on your property or generate income by leasing residential and/or storage units! Buyer to do own due diligence.



**COLDWELL BANKER
COMMERCIAL
REALTY**

Andriana Honda (S)
REALTOR® RS-86471
ANDRIANA.HONDA@CBREALTY.COM

Jordan P. Chow (PB, CCIM)
RB-21901
JORDANPCHOW@GMAIL.COM

Darrin Araki (S)
REALTOR® RS-61353
DARRIN.ARAKI@CBPACIFIC.COM

BANK BARN - STORAGE/WORKSHOP



COLDWELL BANKER
COMMERCIAL
REALTY

Andriana Honda (S)
REALTOR® RS-86471
ANDRIANA.HONDA@CBREALTY.COM

Jordan P. Chow (PB, CCIM)
RB-21901
JORDANPCHOW@GMAIL.COM

Darrin Araki (S)
REALTOR® RS-61353
DARRIN.ARAKI@CBPACIFIC.COM

FLAT BARN - BUILD TO SUIT!



<https://my.matterport.com/show/?m=6DG5RT262cq&mls=1>



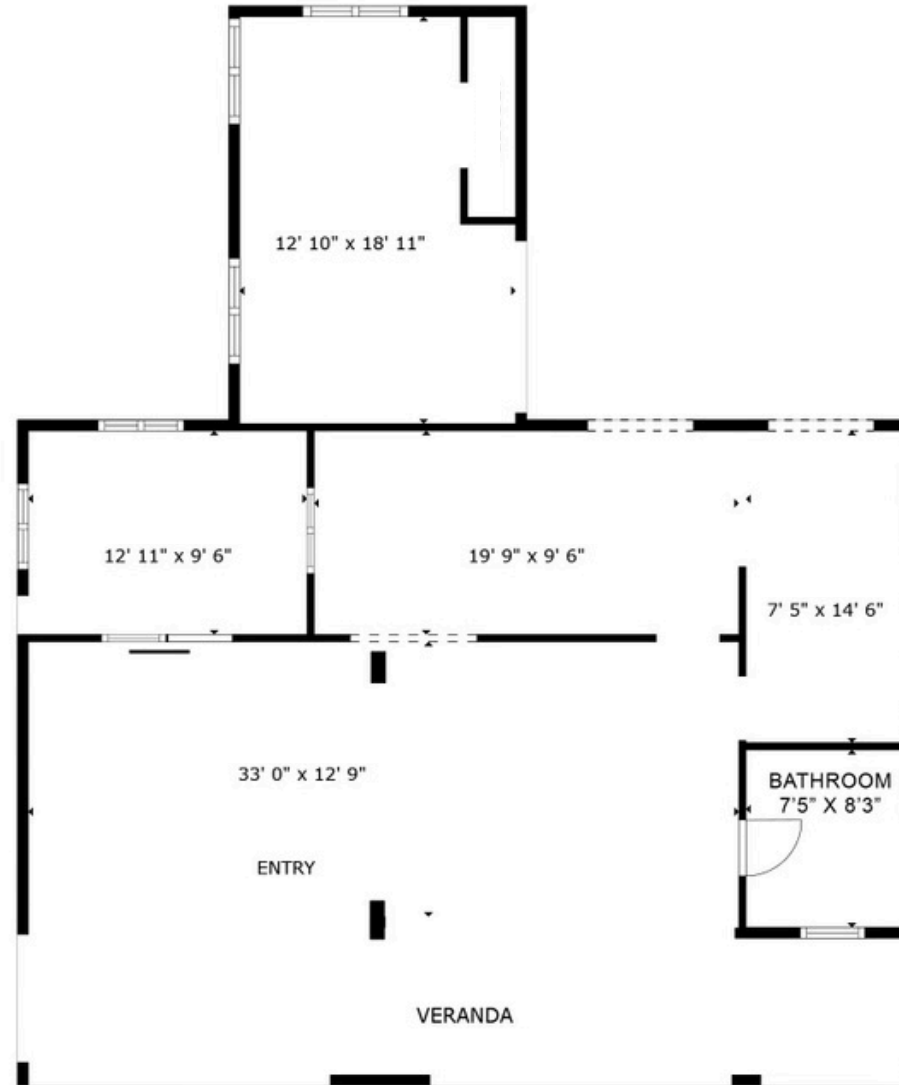
COLDWELL BANKER
COMMERCIAL
REALTY

Andriana Honda (S)
REALTOR® RS-86471
ANDRIANA.HONDA@CBREALTY.COM

Jordan P. Chow (PB, CCIM)
RB-21901
JORDANPCHOW@GMAIL.COM

Darrin Araki (S)
REALTOR® RS-61353
DARRIN.ARAKI@CBPACIFIC.COM

FLAT BARN LAYOUT



FLOOR PLAN

GROSS INTERNAL AREA
FLOOR PLAN 1,171 sq.ft.
EXCLUDED AREAS : VERANDA 276 sq.ft.
TOTAL : 1,171 sq.ft.

SIZES AND DIMENSIONS ARE APPROXIMATE, ACTUAL MAY VARY.



**COLDWELL BANKER
COMMERCIAL
REALTY**

Andriana Honda (S)
REALTOR® RS-86471
ANDRIANA.HONDA@CBREALTY.COM

Jordan P. Chow (PB, CCIM)
RB-21901
JORDANPCHOW@GMAIL.COM

Darrin Araki (S)
REALTOR® RS-61353
DARRIN.ARAKI@CBPACIFIC.COM

RESIDENTIAL



COLDWELL BANKER
COMMERCIAL
REALTY

Andriana Honda (S)
REALTOR® RS-86471
ANDRIANA.HONDA@CBREALTY.COM

Jordan P. Chow (PB, CCIM)
RB-21901
JORDANPCHOW@GMAIL.COM

Darrin Araki (S)
REALTOR® RS-61353
DARRIN.ARAKI@CBPACIFIC.COM



Property Website:
[https://www.gsdhawaii.com/
property/84-276-ikuone-
place](https://www.gsdhawaii.com/property/84-276-ikuone-place)



CONTACT US FOR MORE INFORMATION

www.teamgsdhawaii.com



Andriana Honda (S)
REALTOR® RS-86471
ANDRIANA.HONDA@CBREALTY.COM



Jordan P. Chow (PB, CCIM)
RB-21901
JORDANPCHOW@GMAIL.COM



Darrin Araki (S)
REALTOR® RS-61353
DARRIN.ARAKI@CBPACIFIC.COM

4211 Waialae Avenue Suite 9000 Honolulu HI 96816

©2023 Coldwell Banker. All Rights Reserved. Coldwell Banker Commercial® and the Coldwell Banker Commercial logos are trademarks of Coldwell Banker Real Estate LLC. The Coldwell Banker® System is comprised of company owned offices which are owned by a subsidiary of Anywhere Advisors LLC and franchised offices which are independently owned and operated. The Coldwell Banker System fully supports the principles of the Equal Opportunity Act.