



CRANE BUILDING - FOR LEASE

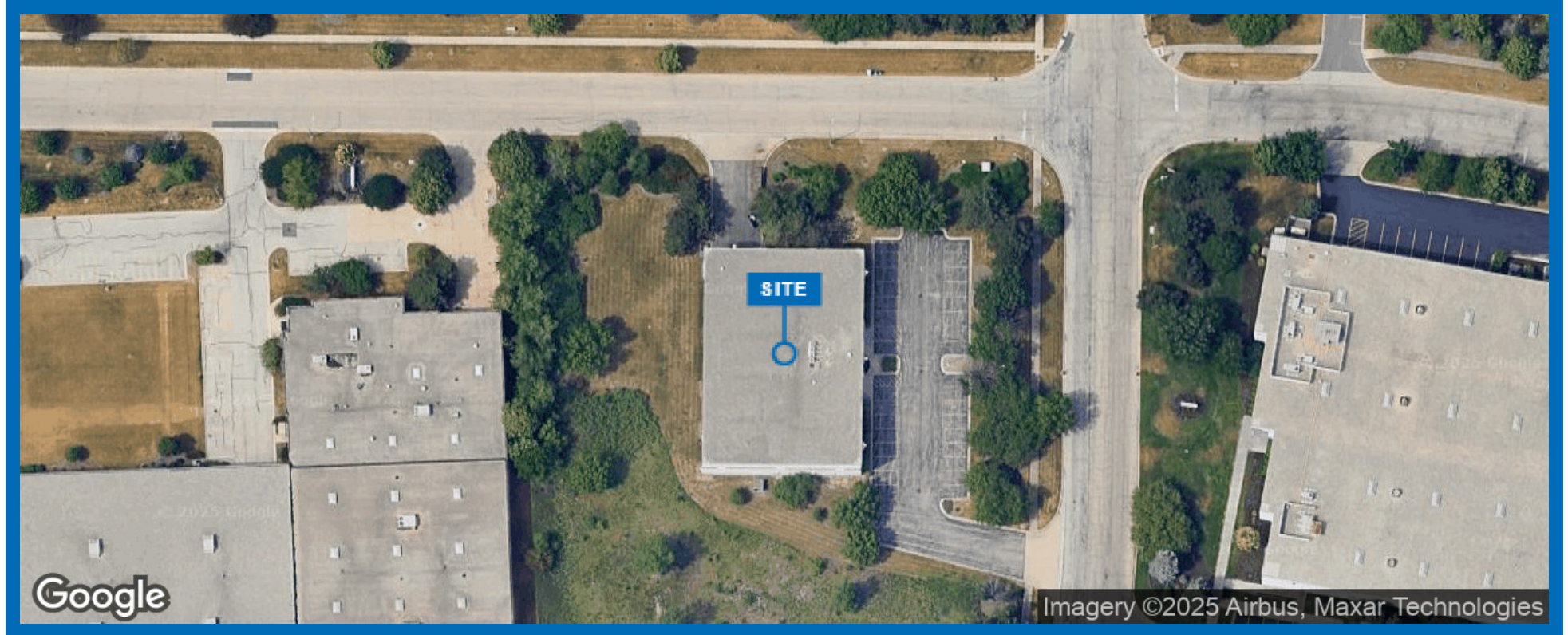
900 MUIRFIELD DR

HANOVER PARK, IL 60133

Licensed in Illinois as Newmark Midwest Region, LLC

The information contained herein has been obtained from sources deemed reliable but has not been verified and no guarantee, warranty or representation, either express or implied, is made with respect to such information. Terms of sale or lease and availability are subject to change or withdrawal without notice.

NEWMARK



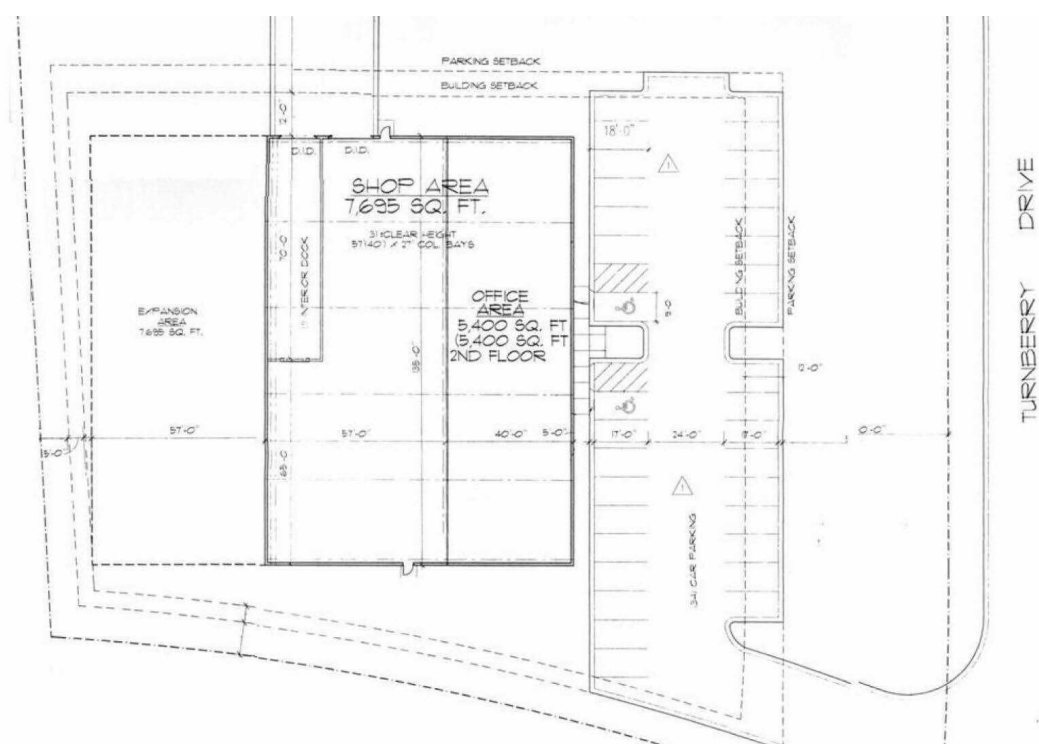
PROPERTY HIGHLIGHTS

- 5,400 SF Office
- 5,400 SF Mezzanine (2nd Story)
- 7,695 SF Shop/Warehouse
- 31' Clear Height
- 25-Ton Crane Capacity
- 1 Interior Dock
- 1 Drive-In Door
- 2,000 Amps @ 480 Volt Power
- 35 Car Parking
- Building or Parking can be expanded
- High Image Facility

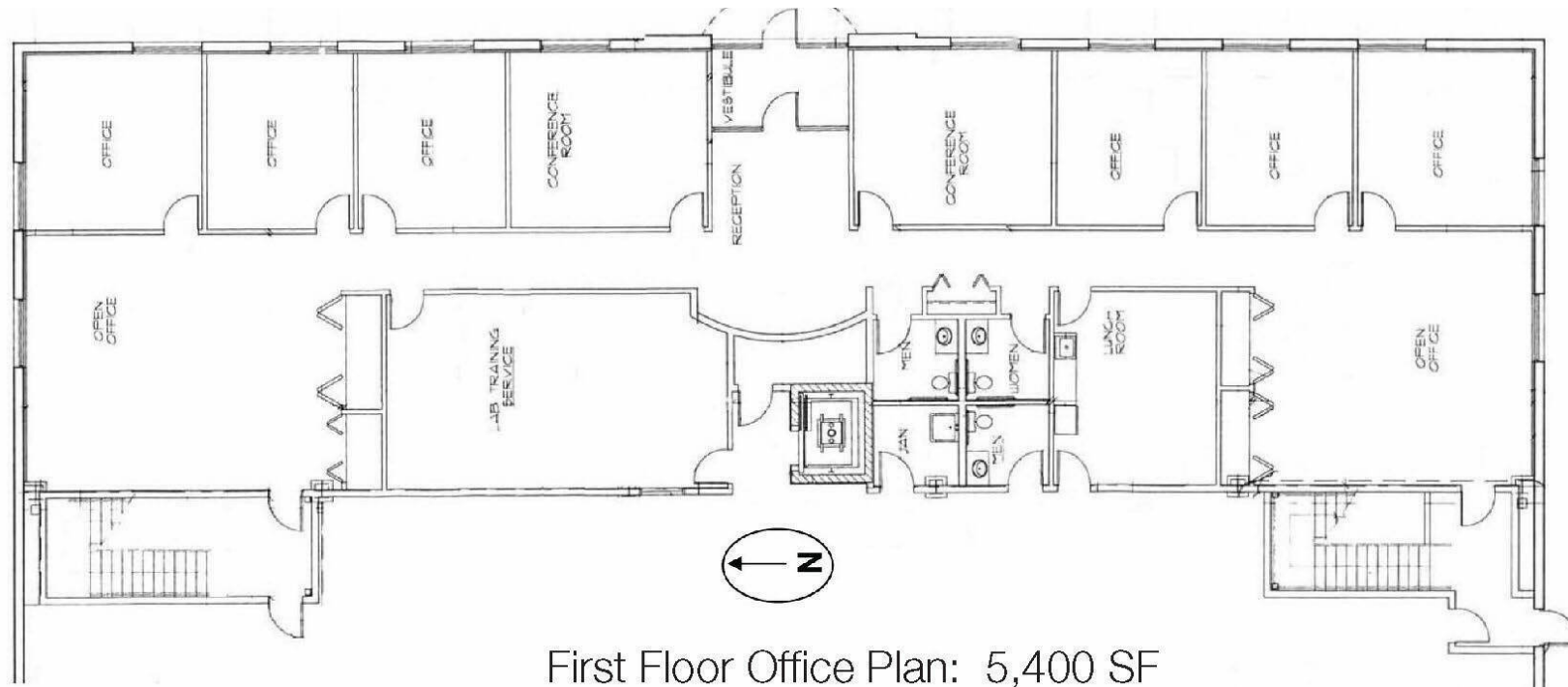
SUMMARY

Total Building Size:	18,495 SF
Lease Rate:	Subject to Offer
Real Estate Taxes (2024):	\$51,475 (\$2.78/SF)
Lot Size	1.75 Acres



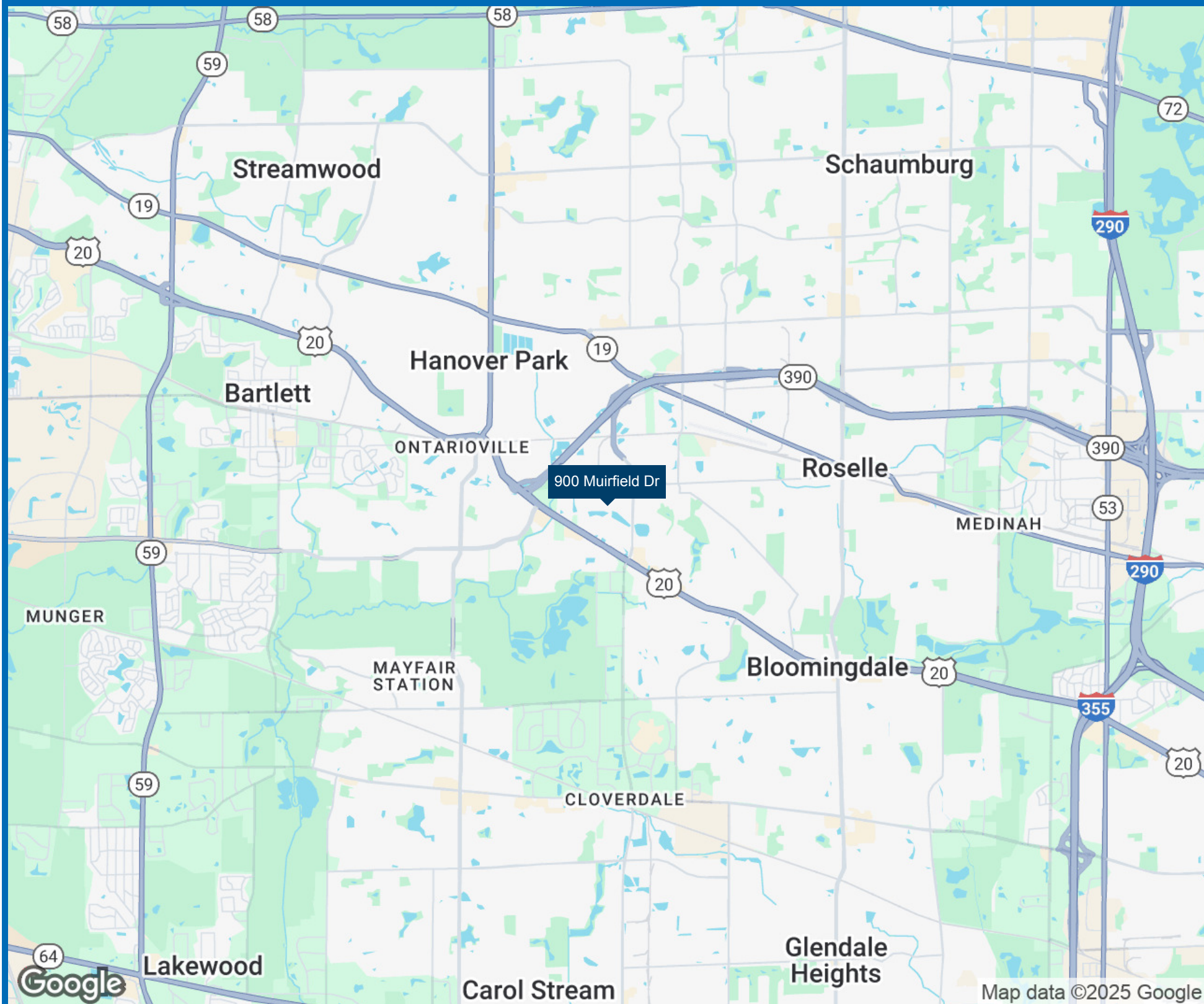


SITE PLAN



First Floor Office Plan: 5,400 SF

OFFICE FLOOR PLAN





Adam Marshall, SIOR, CCIM
Executive Managing Director
t 773-957-1428
adam.marshall@nmrk.com

Mark Deady, CCIM
Director
t 773-957-1443
mark.deady@nmrk.com

8750 W Bryn Mawr Ave Suite 350
Chicago, IL 60631



NEWMARK

nmrk.com