

8665 W. MARKET ST
GREENSBORO, NC

for
LEASE



- Total SF Available - +/- 48,710 SF
 - 7,712 SF of Total office/lab
 - 4,000 SF epoxy floor/lab space
- (3) Drive in doors – 12' wide x 13' 5" high
- (1) Dock High with edge of dock leveler
 - 12' wide x 13'5" high
- (2) Dock Highs with levelers
 - 8' wide x 8" high
- (1) Dock High 8' x 8' - No leveler
- Warehouse clear height – 15' 8"
- Column Spacing - 39' x 31'
- Radiant Gas Pack Heating
- Motion Activated LED Lights
- Freshly painted walls and roof deck in warehouse
- No sprinkler/fire suppression
- Compressed air lines
- Duke Energy Served – 277/480 Volt
3 Phase service available

NAI Piedmont Triad

Commercial Real Estate Services, World Wide

CHRIS LOWE, CCIM, SIOR

SHAREHOLDER & BROKER

(O) 336.358.3235

(C) 336.207.3245

clowe@naipt.com

BANKS HANDY

Broker

(O) 336.373.0995

(C) 336.808.6369

bhandy@naipt.com

348 N Elm Street | Greensboro, NC 27101 | naipt.com

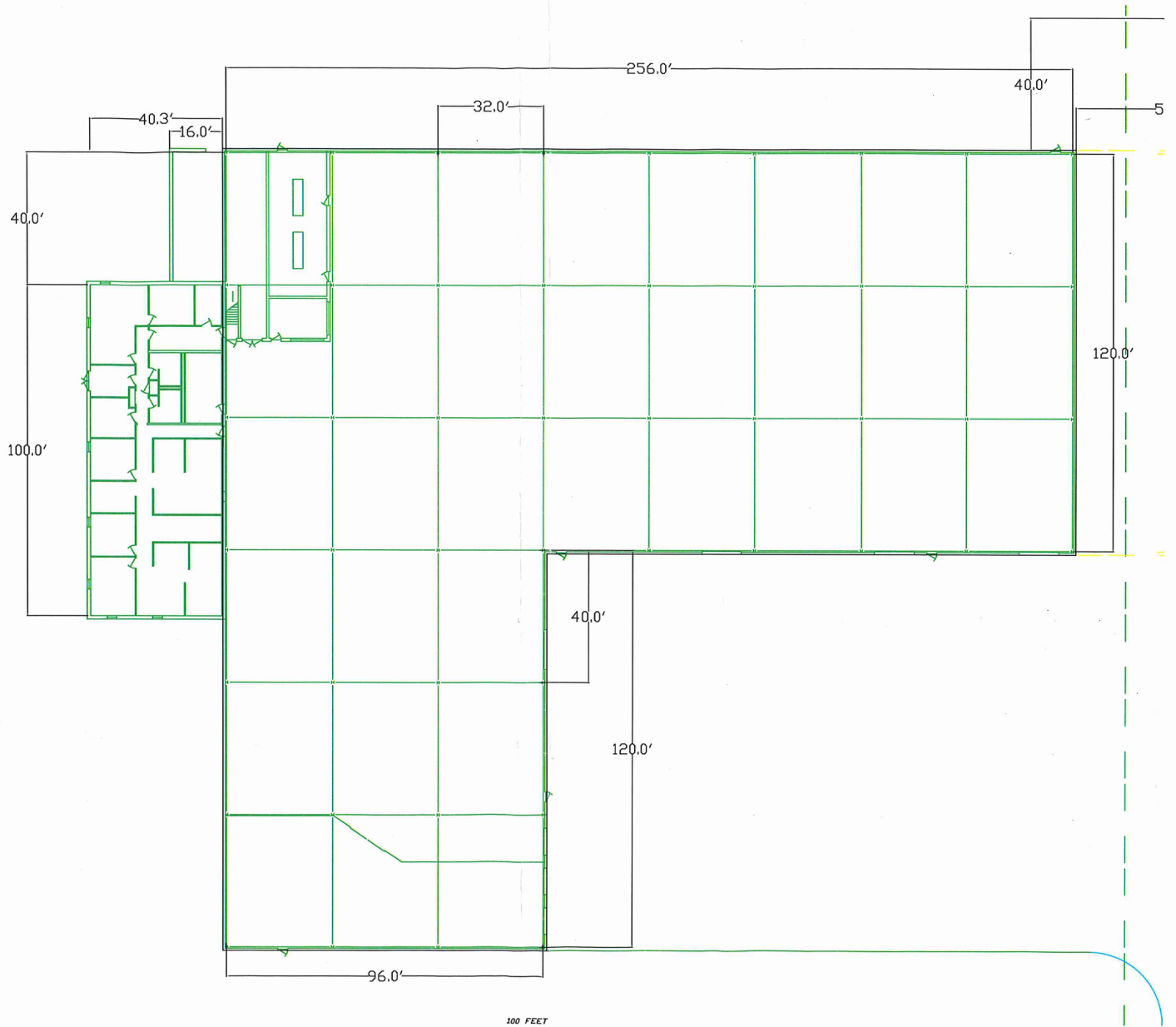


This material may contain content generated with AI assistance and publicly sourced data. NAI Piedmont Triad makes every effort to verify the information but makes no warranties or representations regarding the accuracy, completeness, or reliability of the information. Independent verification of all details is strongly encouraged. Prices, terms, and availability are subject to change without prior notice.

CHRIS LOWE, CCIM, SIOR
SHAREHOLDER & BROKER
(O) 336.358.3235
(C) 336.207.3245
clowe@naipt.com

BANKS HANDY
Broker
(O) 336.373.0995
(C) 336.808.6369
bhandy@naipt.com

348 N Elm Street | Greensboro, NC 27101 | naipt.com



This material may contain content generated with AI assistance and publicly sourced data. NAI Piedmont Triad makes every effort to verify the information but makes no warranties or representations regarding the accuracy, completeness, or reliability of the information. Independent verification of all details is strongly encouraged. Prices, terms, and availability are subject to change without prior notice.

CHRIS LOWE, CCIM, SIOR
SHAREHOLDER & BROKER
(O) 336.358.3235
(C) 336.207.3245
clowe@naipt.com

BANKS HANDY

Broker

(O) 336.373.0995

(C) 336.808.6369

bhandy@naipt.com

348 N Elm Street | Greensboro, NC 27101 | naipt.com