

Summary

- We are pleased to offer for lease approximately 1178.25 of prime office space located at 99 Taunton Rd in Medford, NJ (The Cedarbrook Building). The property is situated in a desirable location with easy access to major highways and transportation. The office space is well-maintained and features a variety of amenities, making it an ideal location for businesses of all sizes.
- The property is located at 99 Taunton Rd, Medford in Medford, NJ. The property is situated in a desirable location with easy access to major highways and transportation, including Route 70, Route 295, and the New Jersey Turnpike. The property is also located near a variety of restaurants, shops, and other amenities.
- The property is offered for lease at a competitive rental rate of \$ 15.00 per square foot per year. The lease terms are negotiable.
- We are confident that the property is an ideal location for businesses of all sizes. The property's convenient location, well-maintained office space, and variety of amenities make it an attractive option for businesses seeking a quality office environment.

Office dimensions

Front Office (Smaller)

14.5 X 12 Sq FT Front office

13.5 X 18 Sq Ft Back office

Back Office (Larger office)

38.5 X 14.5 Sq Ft Main office

14 X 14.5 Side office

Pictures

[Building front](#)

[Larger office Front](#)

[Large office second room](#)

[Smaller office 1](#)

[Smaller office 2](#)

Features

- **Highly visible location.**
- **Established Medical tenants.**
- **Competitive market rates**

[Other link](#)

Century 21 Alliance

**400 Stokes Rd, Medford, NJ
08055**

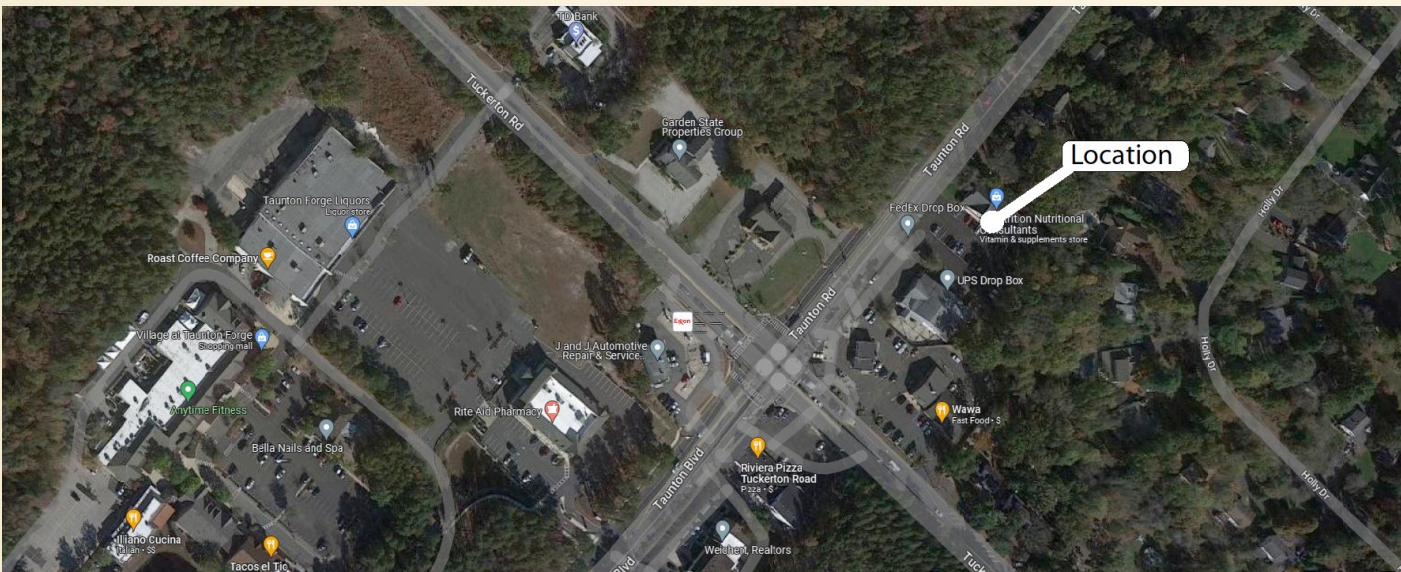
(609) 6548797

**For more information
contact:**

James Bergman

jbergmanc21@gmail.com

(609) 320-0572



Population Statistics

- Medford Township is a township in Burlington County, New Jersey, United States. The township's population was 24,497 at the 2020 United States census, an increase of 1,464 from the 2010 census count of 23,033.
- The township is in the western part of Burlington County and is bordered by the municipalities of Pemberton Township, Southampton Township, Shamong Township, Tabernacle Township, Woodland Township, Mount Laurel Township, Lumberton Township, and Evesham Township. Medford Township is part of the Philadelphia-Camden-Wilmington metropolitan area.
- The median income for a household in the township was \$92,871, and the median income for a family was \$113,367. Males had a median income of \$84,046 versus \$57,794 for females. The per capita income for the township was \$46,953.