

RANDOLPH MEDICAL PARK

3535 & 3541 Randolph Road, Charlotte, NC



Creating Exceptional

Randolph Medical Park features two medical office buildings located at 3535 Randolph Road and 3541 Randolph Road. The medical office buildings feature ample surface parking, excellent co-tenancy, and generous tenant improvement allowances. Located in the heart of the Cotswold Medical District, this building has onsite management staff and covered canopy parking for patient convenience.

The Cotswold Medical District is home to Atrium Main Hospital, Novant Presbyterian Hospital, and Atrium Mercy Hospital, making Randolph Medical Park an ideal location for your medical practice.



Randolph Medical Park Cotswold Area Map



Aerial Map






LOCATION HIGHLIGHTS

RANDOLPH MEDICAL PARK

3535 & 3541 Randolph Rd, Charlotte, NC

Randolph Medical Park is a two building complex conveniently located near uptown in the Cotswold neighborhood of Charlotte, North Carolina. Randolph Medical Park is within minutes of four area hospitals: Atrium Main Hospital, Atrium Behavioral Health, Novant Presbyterian Hospital, and Atrium Mercy Hospital making Randolph Medical Park an ideal location for a medical practice.



TRANSPORTATION		
 PUBLIC TRANSPORTATION		
BUS 15, 39 - Billingsley Rd & Randolph Rd	3 min walk	0.2 mi
 NEARBY HOSPITALS		
Atrium Main Hospital	7 min drive	2.9 mi
Novant Presbyterian Hospital	6 min drive	2.3 mi
Atrium Mercy Hospital	5 min drive	1.9 mi
Atrium Behavioral Health	9 min walk	0.5 mi
 UPTOWN MUSEUMS, LANDMARKS, RESTAURANTS, GARDENS & SHOPPING		
Uptown Charlotte	8 min drive	3.8 mi

Location Map



DEMOGRAPHICS

RANDOLPH MEDICAL PARK



POPULATION AND HOUSEHOLDS

POPULATION	1 Mile	5 Mile
2021 Total Population	11,330	321,522
2026 Total Population	12,002	345,421
Population Growth 2021-2026	5.93%	7.43%
Average Age	36.30	36.90
HOUSEHOLDS	1 Mile	5 Mile
2021 Total Households	4,623	139,314
2026 Total Households	4,880	149,928
Growth 2021-2026	5.56%	7.62%
Average Household Size	2.40	2.20
Median Home Value	\$779,529	\$354,115
Median Year Built	1969	1981

AVAILABLE SPACE

78,344 SF BUILDING

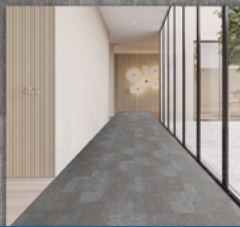
- Two building complex
- Conveniently located in the Cotswold area and near Uptown, Charlotte
- Close proximity to Atrium Main Hospital, Atrium Mercy Hospital, Novant Presbyterian Hospital, and Atrium Behavioral Health
- Common area redevelopment underway
- Ample surface with covered canopy parking
- On-site management staff
- Balanced mix of healthcare specialties and diagnostic services, including a pharmacy
- Competitive lease package
- Easy access to I-277 and I-74

LOBBY TILE: TRINITY DYNASTY WHITE
24"X24" TILES WITH MATTE FINISH USED ON FLOOR
3"X6" OR 24"X48" TILE WITH POLISHED FINISH USED ON WALLS



MAIN STAIR CARPET: EF
CONTRACT LANDLINE
LND17 HANG UP

CORRIDOR CARPET TILE: SHAW STRUCTURE TILE
5T297, 24"X24" METALLIC BEIGE 94760



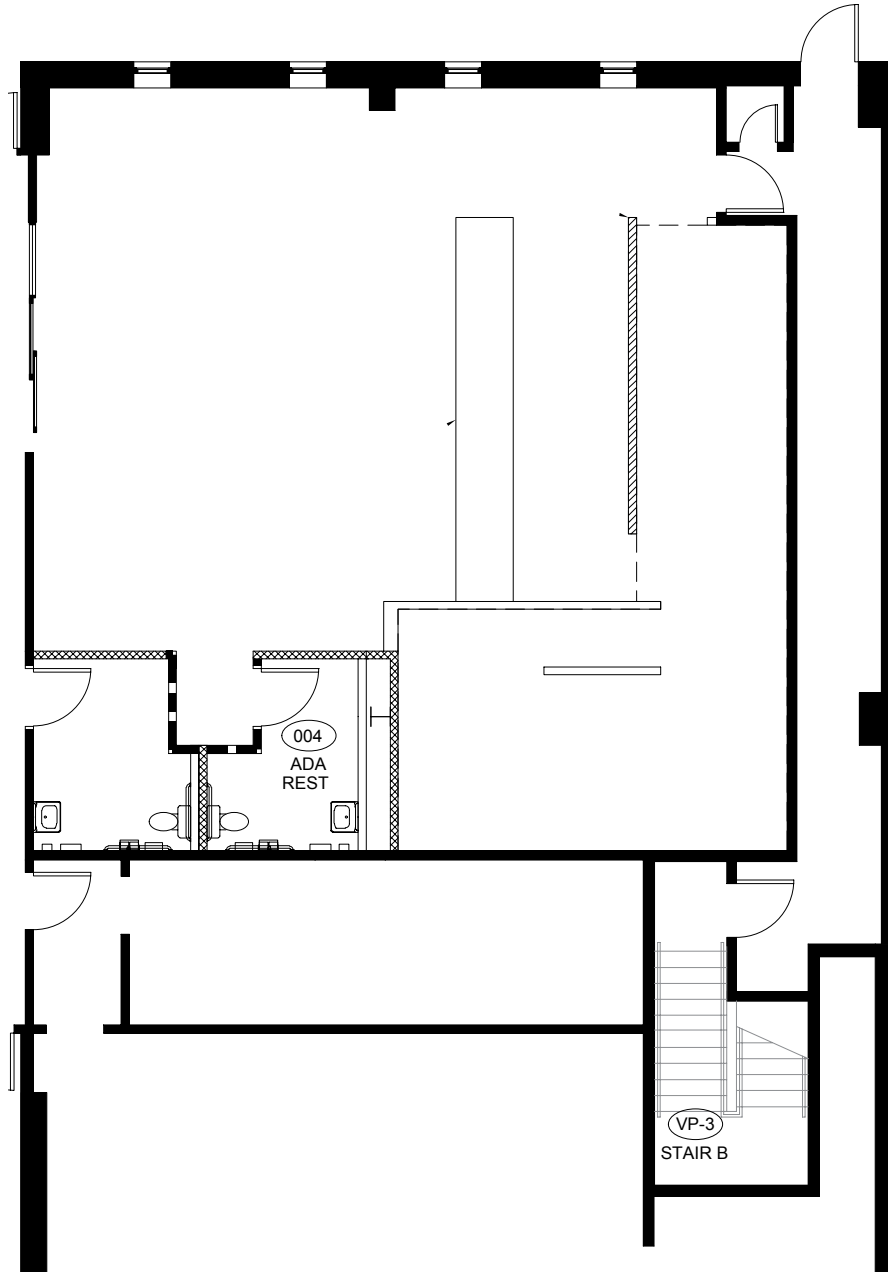
For Leasing Information

Contact Regional Leasing Director
Erreca White at (706) 373-2889
Erreca.White@Lillibridge.com

SUITE PLAN

Randolph Medical Park
3535 Randolph Road
Charlotte, NC

B100
1,781 SF



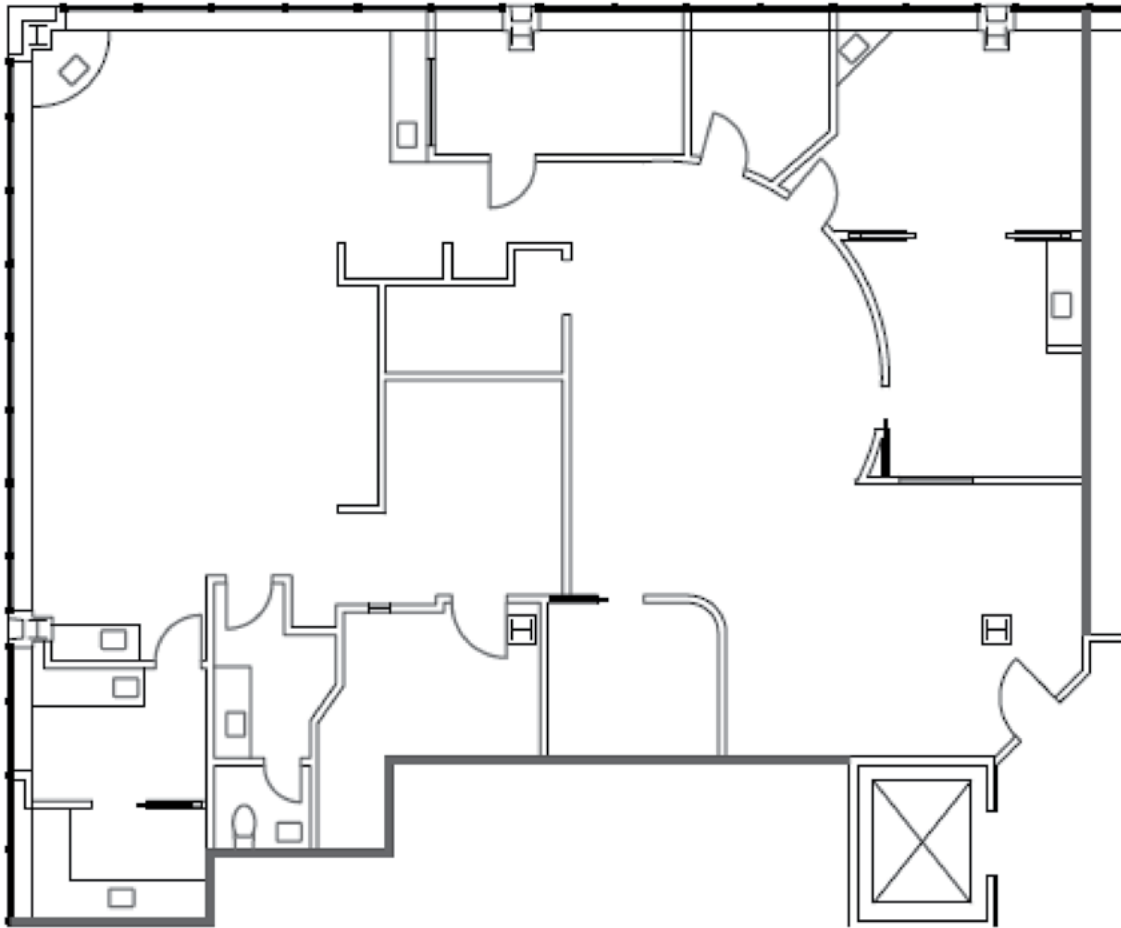
For Leasing Information

Contact Regional Leasing Director
Erreca White at (706) 373-2889
Erreca.White@Lillibridge.com

SUITE PLAN

Randolph Medical Park
3535 Randolph Road
Charlotte, NC

SUITE 206R
2,923 SF



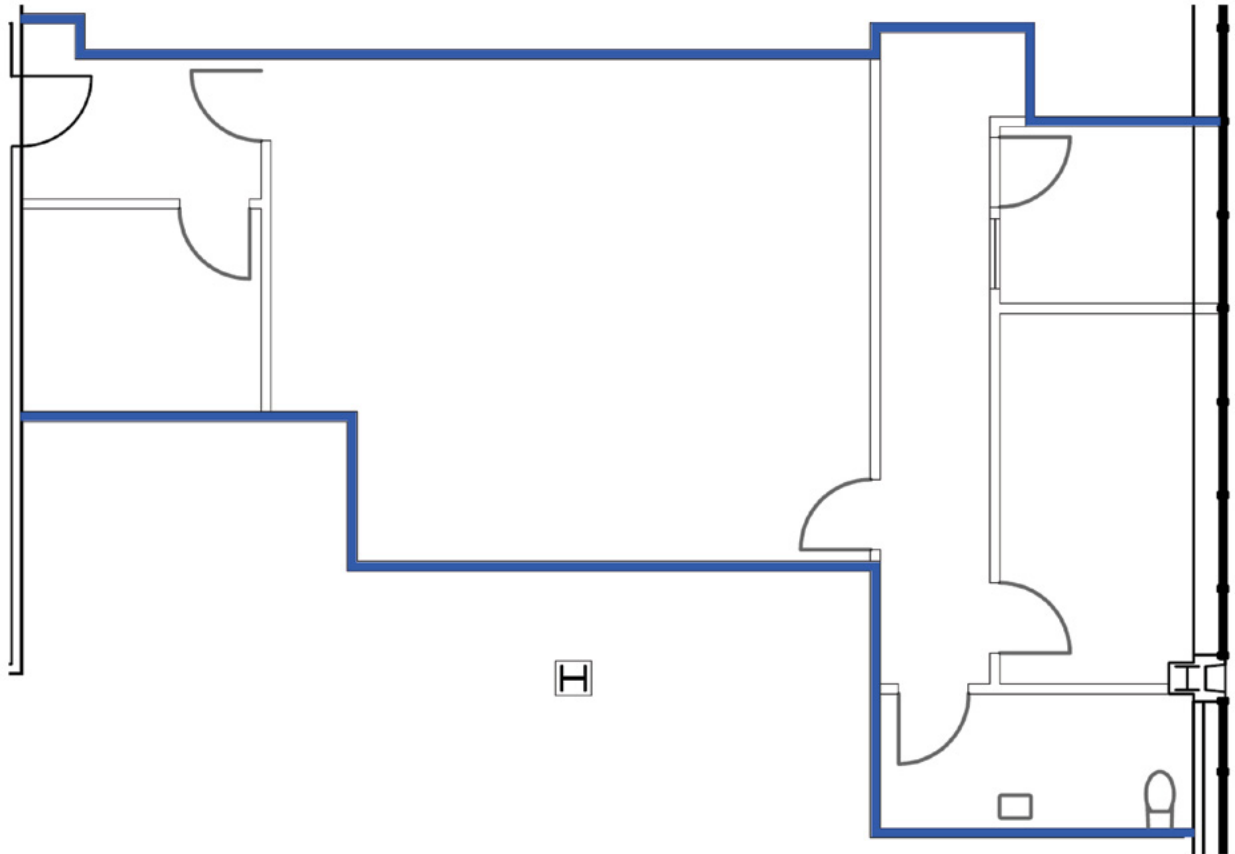
For Leasing Information

Contact Regional Leasing Director
Erreca White at (706) 373-2889
Erreca.White@Lillibridge.com

SUITE PLAN

Randolph Medical Park
3535 Randolph Road
Charlotte, NC

SUITE 209R
1,599 SF



For Leasing Information

Contact Regional Leasing Director
Erreca White at (706) 373-2889
Erreca.White@Lillibridge.com



ABOUT LILLIBRIDGE

We Create Exceptional Places of Care

350+

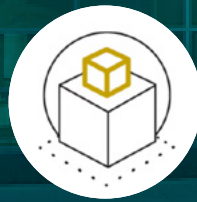
Medical Office
Buildings



WE ADVISE

150+

Hospital
Partners



WE LEASE

30+

States With
Properties



WE MANAGE



WE MONETIZE

Healthcare is a Rapidly Changing Environment

Lillibridge Healthcare Services is driven by a mission to create exceptional places of care. We consistently maintain state-of-the-art facilities, prioritize tenant satisfaction, and strive to exceed the expectations of healthcare providers and their patients.

Our commitment to tenant satisfaction is reflected in the multiple awards we have received for our exceptional performance in this area, recognizing our dedication to delivering an outstanding tenant experience.

To ensure we meet your specific needs, our regional leasing directors offer unique insights into local markets. Their expertise enables us to find the perfect medical office space tailored to your requirements, taking into account the importance of location and strategic opportunities aligned with your goals.

As a wholly owned property management and leasing subsidiary of Ventas, a leading real estate investment trust with approximately 1,200 properties in its diversified portfolio, Lillibridge Healthcare Services remains committed to delivering outstanding environments that support optimal patient care and provider success.



OUR COMMITMENT

Delivering exceptional places of care to the communities we serve is our mission.

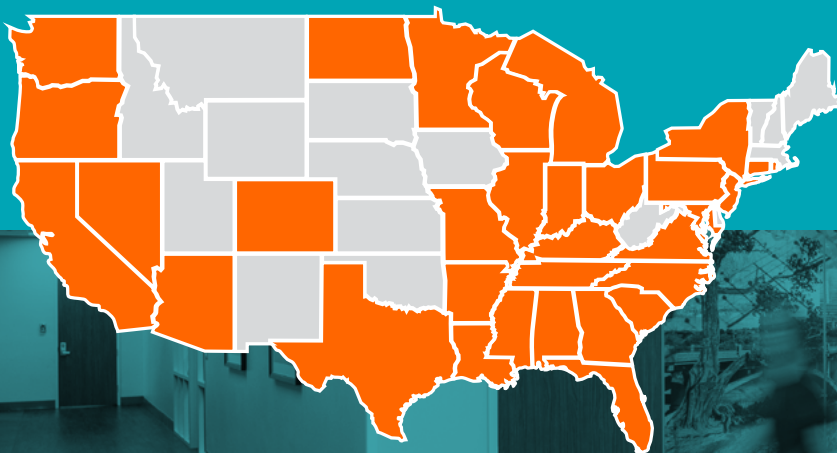
Working in conjunction with our corporate team, our dedicated onsite property management teams are there on the frontlines to help ensure that our buildings are maintained to promote the highest level of health and safety, elevate efficiency, and deliver a high-quality experience to our tenants and their patients.

	<p>KINGLSEY EXCELLENCE AWARD— TOP 25% IN TENANT SATISFACTION</p>
	<p>TOBY AWARDS FOR DOCTOR'S CENTER AT EMORY ST. JOSEPH'S</p>
<p>ESG ACHIEVEMENTS</p>	
	
	<p>2021 TOP ENERGY STAR CERTIFIED OWNER/OPERATOR OF MEDICAL OFFICE BUILDINGS</p>

Our Reach

Our medical office buildings are strategically located on highly-rated hospital campuses and medical centers in core markets throughout the country.

As the most capable and experienced team in healthcare real estate, the Lillibridge team is here to help you find the right location and space to grow your business.



Our Tenant Resources

Delivering exceptional places of care to our healthcare tenants and their patients is our commitment. Working in conjunction with our corporate team, our dedicated onsite property management teams are there on the frontlines to help ensure that our outpatient medical buildings are maintained to promote the highest level of health and safety, elevate efficiency, and deliver a high-quality experience to our tenants and their patients.

We Prioritize Tenant Satisfaction

> Kingsley Index

We strive to provide the best tenant experience in our medical office buildings, which is why we implemented the Kingsley Survey, the premier real estate industry tenant satisfaction tool. Our continuous efforts have placed us in the Kingsley Index's Top Quartile of Overall Tenant Satisfaction.

> Tenant Service Requests

We strive to satisfactorily complete priority tenant service requests within 8 hours.

> Tenant Appreciation

We coordinate annual tenant events at our properties to show our appreciation and create a sense of community.

EMPLOYEE & TENANT SAFETY

Daily health assessments for building staff, compliance with OSHA guidelines and continued training and communication to promote safe work practices.

BUILDING SAFETY

Completed safety audits at 100% of our managed properties to identify and minimize safety hazards to our employee's, tenants, and visitors.

SUSTAINABILITY PRACTICES

Named a Premier Member of the U.S. Environmental Protection Agency for achieving ENERGY STAR Certification. Energy Star recognizes the dedicated efforts our employees have made to ensure our properties meet the highest standard in environmental responsibility and resource efficiency.

RANDOLPH MEDICAL PARK

Regional Leasing Director:

ERRECA WHITE

Erreca.White@Lillibridge.com

(706) 373-2889



Lillibridge.com • (312) 408-1370
353 North Clark Street • Suite 3300
Chicago, IL 60654