



Iconic Brookside Building - New Listing!

FOR SALE OR LEASE | 22 W. 63rd St, Kansas City, MO



6,265 +/- SF Building | For Sale or Lease

DEMOGRAPHICS

	1 mile	3 miles	5 miles
Estimated Population	15,549	117,781	245,152
Avg. Household Income	\$175,739	\$111,393	\$94,787

- Former iconic fire/police station in Brookside
- Perfect for restaurant, retail, cafe, event space, office, etc.
- Two story building + basement, first floor is approximately 3,815 SF, second floor is approximately 2,450 SF of private office space
- Excellent location, traffic count, demographics
- Abundant parking with designated slots
- Space for patio/outdoor seating area

 [CLICK HERE TO VIEW MORE LISTING INFORMATION](#)

[For More Information Contact:](#)

CARSON ST. CLAIR | 816.412.7306 | cstclair@blockandco.com

DAVID BLOCK | 816.412.7400 | dblock@blockandco.com

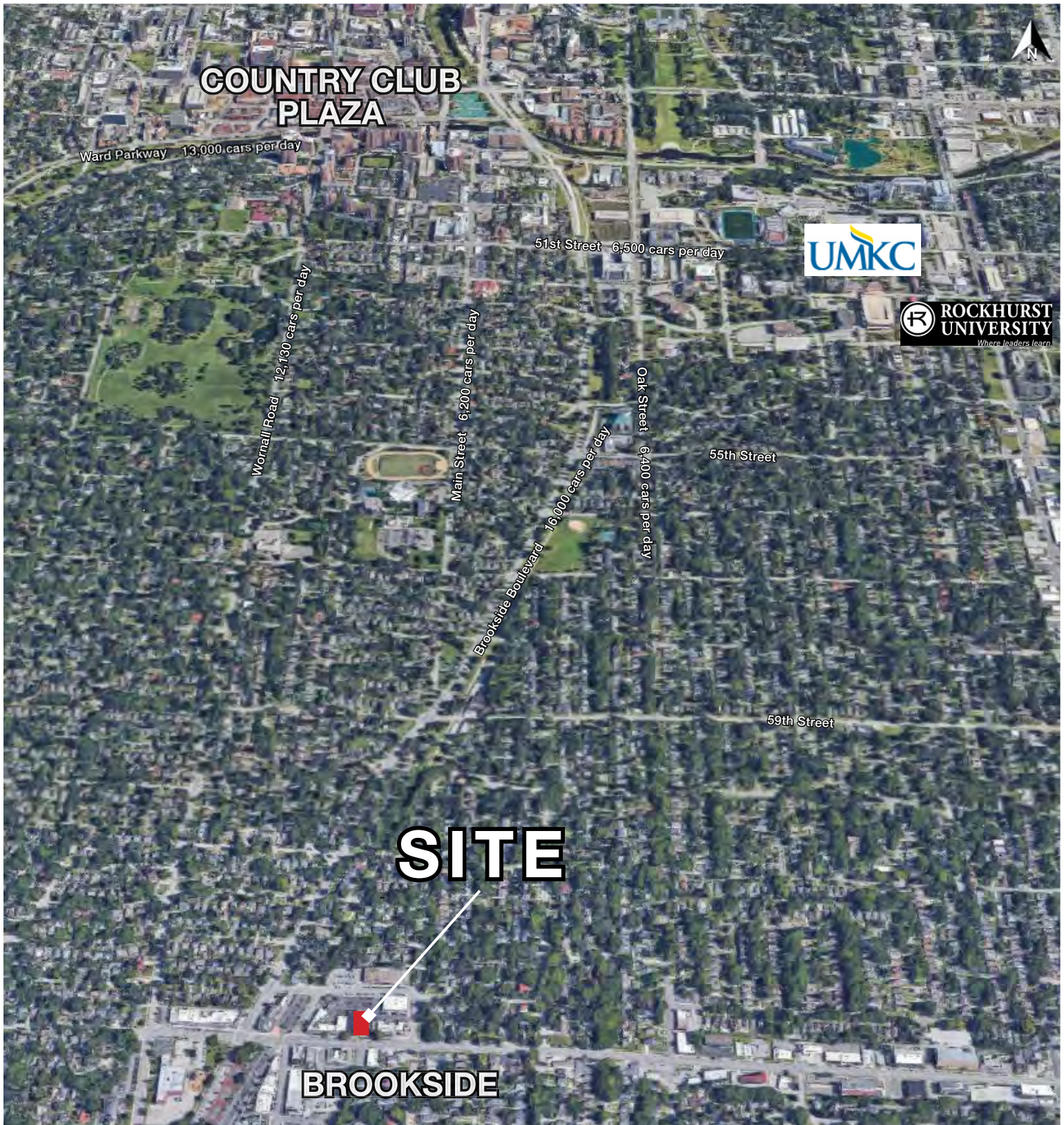
Exclusive Agents



PHOTOS



AERIAL

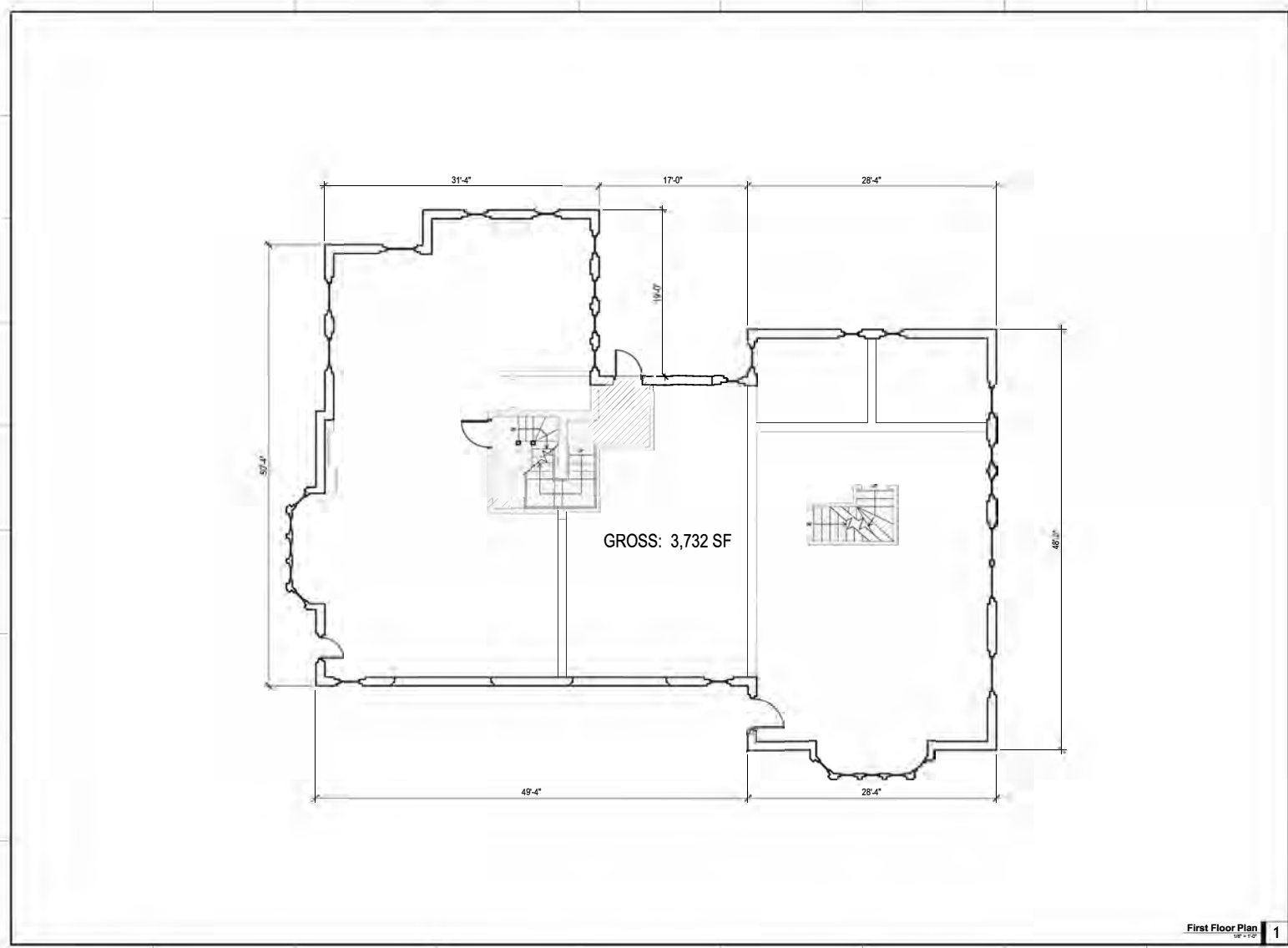




Iconic Brookside Building - New Listing!

FOR SALE OR LEASE | 22 W. 63rd St, Kansas City, MO

FIRST FLOOR PLAN



SAL
SLAGGIE
ARCHITECTS INC
Kansas City, Missouri • Omaha, Nebraska
slaggie.com 888-756-1956 © 2019

- GENERAL NOTES:**
1. It is the Tenant's responsibility to field verify all aspects of existing lease space prior to the start of Construction Documents. This LOD is preliminary and may not reflect the actual field conditions.
 2. Tenants shall be responsible for verification and compliance of all local codes and ordinances as well as A.D.A. requirements.
 3. This Drawing is for reference only. This is not a notice to proceed with construction. The final demised space is contingent upon the executed lease document.

Project #:
Fiddley Fig
22 West 63rd Street
Kansas City, MO 64113

Key Plan:

20 November, 2019

Sheet #:
1 of 2

First Floor Plan
06-11-19 1

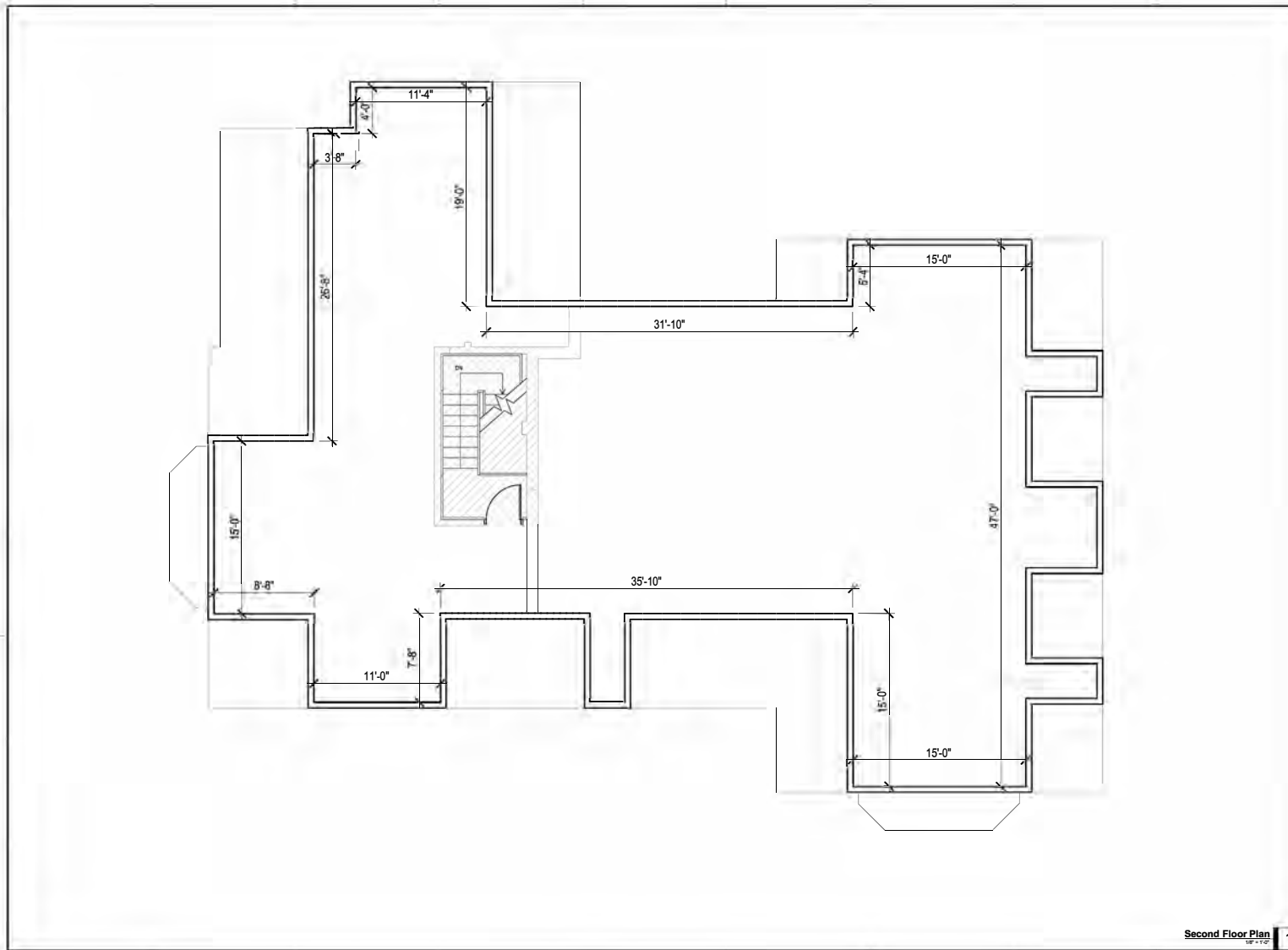




Iconic Brookside Building - New Listing!

FOR SALE OR LEASE | 22 W. 63rd St, Kansas City, MO

SECOND FLOOR PLAN



SAL
SLAGGIE
ARCHITECTS INC
 Kansas City, Missouri • Omaha, Nebraska
 slaggie.com 888-756-1956 © 2019

- GENERAL NOTES:**
1. It is the Tenant's responsibility to field verify all aspects of existing lease space prior to the start of Construction Documents. This LOD is preliminary and may not reflect the actual field conditions.
 2. Tenants shall be responsible for verification and compliance of all local codes and ordinances as well as A.D.A. requirements.
 3. This Drawing is for reference only. This is not a notice to proceed with construction. The final demised space is contingent upon the executed lease document.

Project #:
Fiddley Fig
 22 West 63rd Street
 Kansas City, MO 64113

Key Plan:

20 November, 2019

Sheet #:
2 of 2

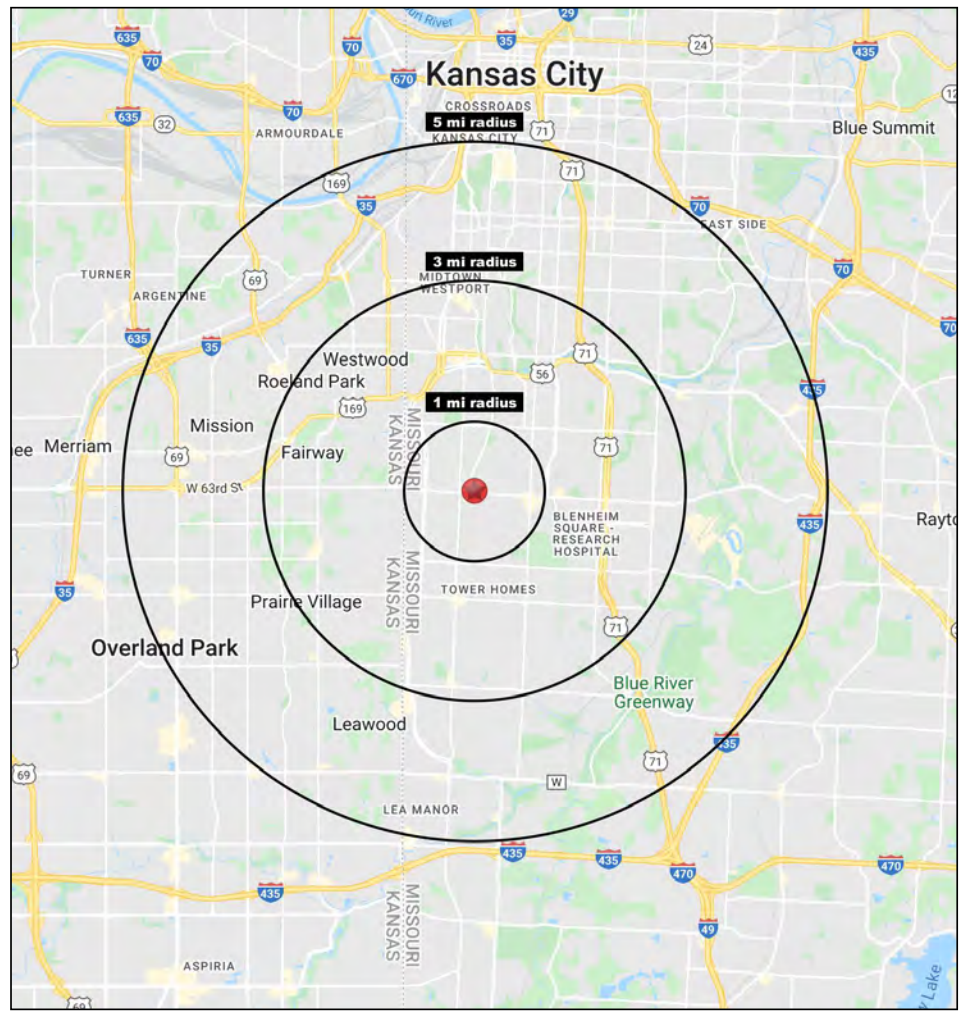
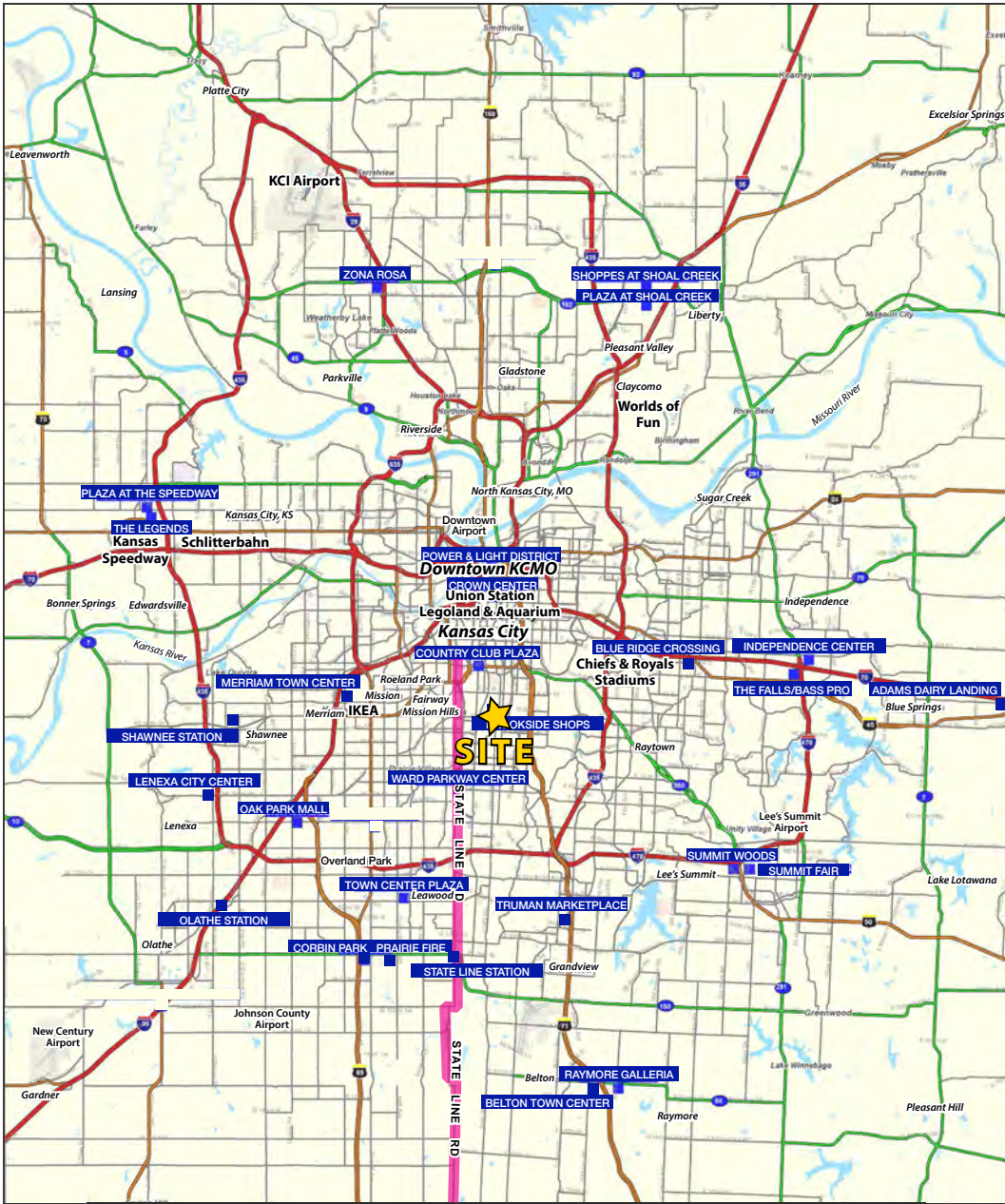
Second Floor Plan 1





Iconic Brookside Building - New Listing!

FOR SALE OR LEASE | 22 W. 63rd St, Kansas City, MO



Block & Company, Inc., Realtors | 605 W. 47th Street, Ste. 200, Kansas City, MO 64112 | 816.753.6000 | www.blockandco.com



All information furnished regarding property for sale or lease is from sources deemed reliable, but no warranty or representation is made as to the accuracy thereof and the same is subject to errors, omissions, changes of prices, rental or other conditions, prior sale or lease or withdrawal without notice.



Iconic Brookside Building - New Listing!

FOR SALE OR LEASE | 22 W. 63rd St, Kansas City, MO

22 W 63rd St Kansas City, MO 64113	1 mi radius	3 mi radius	5 mi radius
Population			
2021 Estimated Population	15,549	117,781	245,152
2026 Projected Population	15,502	117,838	247,359
2020 Census Population	15,523	117,612	244,714
2010 Census Population	14,948	114,361	235,866
Projected Annual Growth 2021 to 2026	-	-	0.2%
Historical Annual Growth 2010 to 2021	0.4%	0.3%	0.4%
2021 Median Age	40.3	37.8	38.2
Households			
2021 Estimated Households	6,779	54,165	113,623
2026 Projected Households	6,867	55,188	116,741
2020 Census Households	6,743	54,062	113,160
2010 Census Households	6,408	52,219	108,076
Projected Annual Growth 2021 to 2026	0.3%	0.4%	0.5%
Historical Annual Growth 2010 to 2021	0.5%	0.3%	0.5%
Race and Ethnicity			
2021 Estimated White	83.0%	57.9%	55.3%
2021 Estimated Black or African American	7.3%	27.8%	28.2%
2021 Estimated Asian or Pacific Islander	2.1%	4.0%	3.5%
2021 Estimated American Indian or Native Alaskan	0.2%	0.4%	0.5%
2021 Estimated Other Races	7.4%	9.9%	12.5%
2021 Estimated Hispanic	4.9%	7.3%	10.6%
Income			
2021 Estimated Average Household Income	\$175,739	\$111,393	\$94,787
2021 Estimated Median Household Income	\$118,988	\$80,280	\$70,978
2021 Estimated Per Capita Income	\$76,623	\$51,402	\$44,086
Education (Age 25+)			
2021 Estimated Elementary (Grade Level 0 to 8)	0.6%	1.5%	2.0%
2021 Estimated Some High School (Grade Level 9 to 11)	1.2%	4.5%	5.2%
2021 Estimated High School Graduate	8.0%	18.6%	20.7%
2021 Estimated Some College	13.7%	16.8%	18.8%
2021 Estimated Associates Degree Only	3.9%	5.4%	6.0%
2021 Estimated Bachelors Degree Only	39.5%	31.0%	28.1%
2021 Estimated Graduate Degree	33.2%	22.2%	19.2%
Business			
2021 Estimated Total Businesses	686	5,294	11,386
2021 Estimated Total Employees	4,963	68,863	165,690
2021 Estimated Employee Population per Business	7.2	13.0	14.6
2021 Estimated Residential Population per Business	22.7	22.2	21.5

©2022. Sites USA. Chandler. Arizona. 480-491-1112 Demographic Source: Applied Geographic Solutions 11/2021. TIGER Geographv - RS1

