

2360-2380 Vantage Drive, Elgin, IL

Available: 14,832 SF

New
Office
Renovations

FOR LEASE: 14,832 SF in High Image, Corporate HQ Facility

AVAILABLE: 14,832 SF

OFFICE: 1,970 SF

LAND AREA: 2.63 AC

CLEAR HEIGHT: 24'

LOADING: 2 Exterior Docks; 1 Drive-In Door

CAR PARKING: Ample

SPRINKLER: Wet

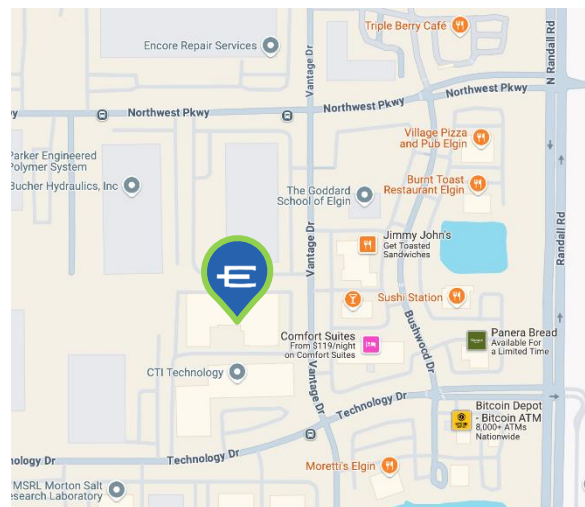
POWER: 400 Amps / 480 Volts Service

BUILT: 2006

RE TAXES: \$2.23 PSF (Paid in 2024)

CAM: \$1.00 PSF (Budgeted 2025)

LEASE RATE: \$8.95 PSF Net



SCAN FOR LISTING



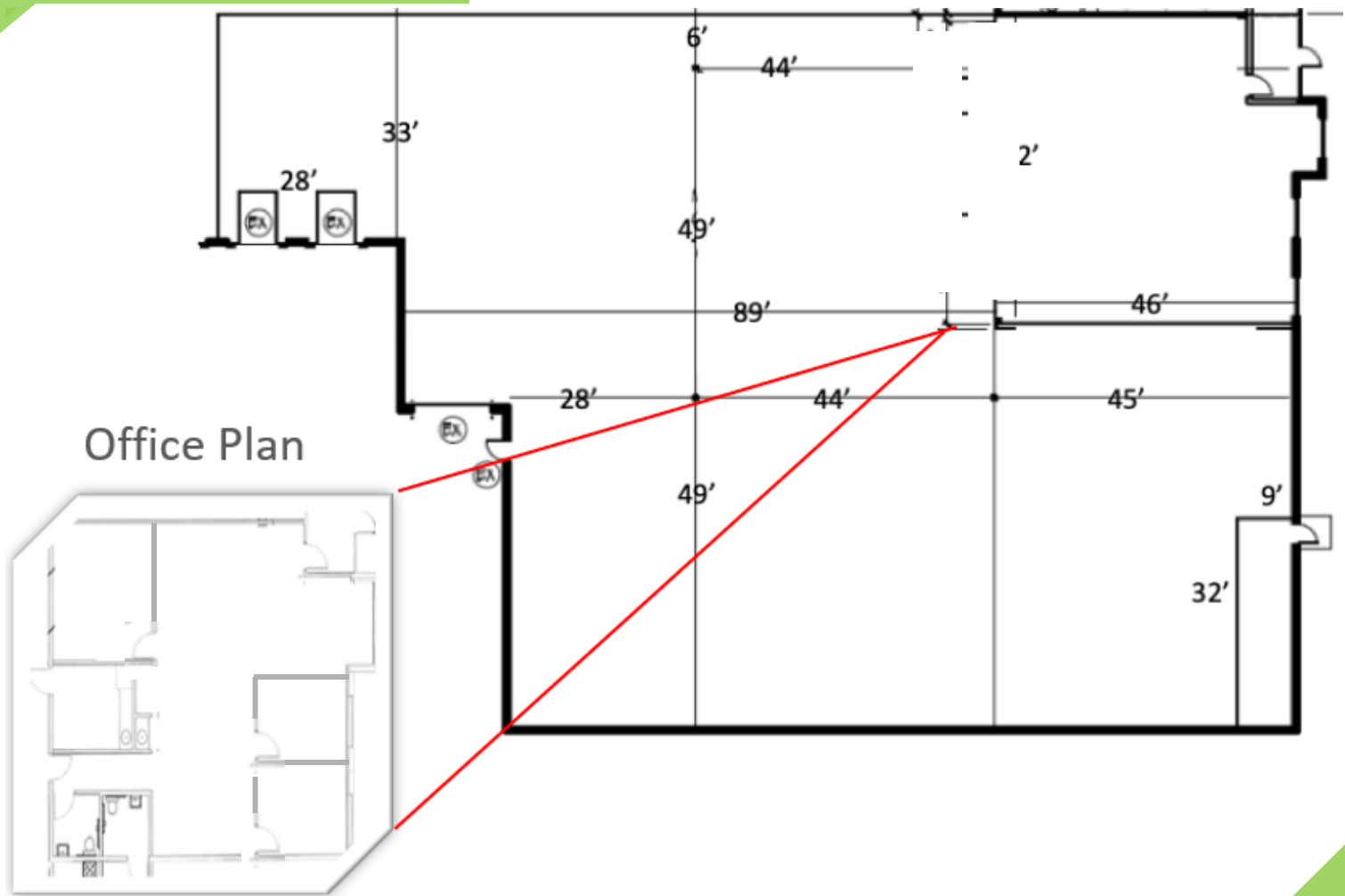
ENTRE
Commercial Realty LLC

Mike DeSerto
224-588-3026
mdeserto@entreccommercial.com

Cory Kay
224-532-2497
ckay@entreccommercial.com

Elisabeth Lazzara
847-310-4209
elazzara@entreccommercial.com

FLOOR PLAN



Unit Highlights



High Image,
Corporate HQ
Facility



Clear Height:
24'



Move-In Ready



Private Loading
Docks and DID

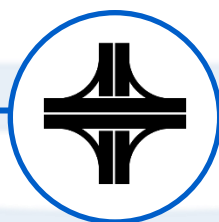
LOCATION



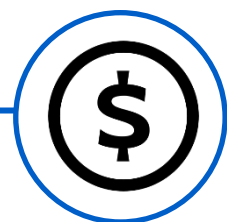
SCAN FOR MAP VIEW



**Located in the
Prestigious NW
Corp. Park**



**Less than ¼ Mile to
the I-90 / Randall Rd.
Interchange**



**Low Kane County
Property Taxes**

ENTRE
Commercial Realty LLC

Mike DeSerto
224-588-3026
mdeserto@entrecommercial.com

Cory Kay
224-532-2497
ckay@entrecommercial.com

Elisabeth Lazzara
847-310-4209
elazzara@entrecommercial.com