

FOR SUBLEASE

Office Building

58,902± SF | \$12.00/SF NNN



123 Darling Avenue, South Portland

Property Highlights

- *Class A Office Building*
- *Conveniently Located*
- *Generous On-site Parking*



Property Description

We are pleased to offer 58,902± SF of office space for sublease at this former WEX building. The space is subdividable down to 30,000± SF. Conveniently located in the Maine Mall area, the property is easily accessible via both I-95 & I-295. The space was recently renovated and is new condition. Class A kitchen and dining area included and extensive furnishings can be included.



Broker Contact

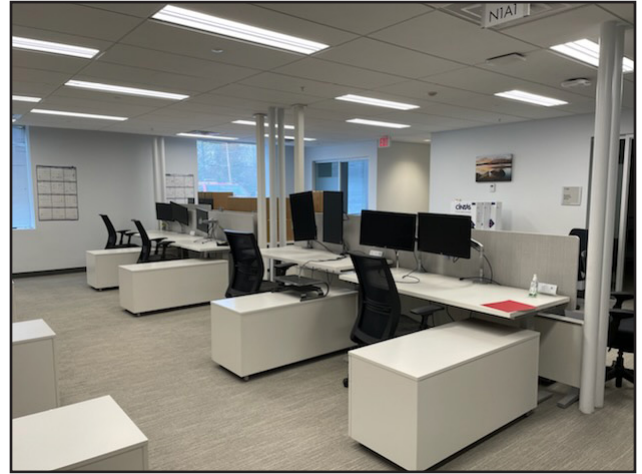
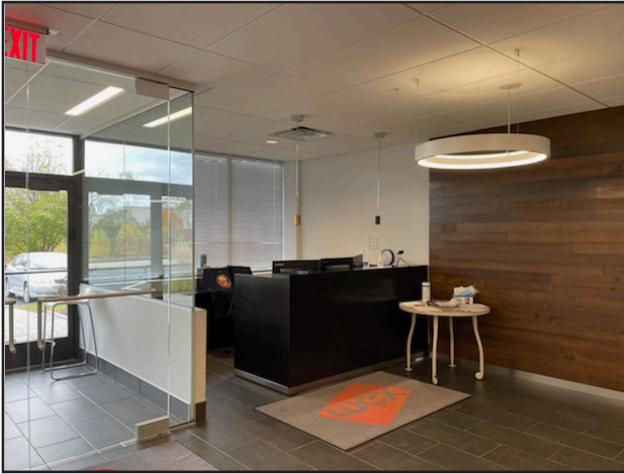
Charlie Craig
207.773.7100

charlescraig@dunhamgroup.com

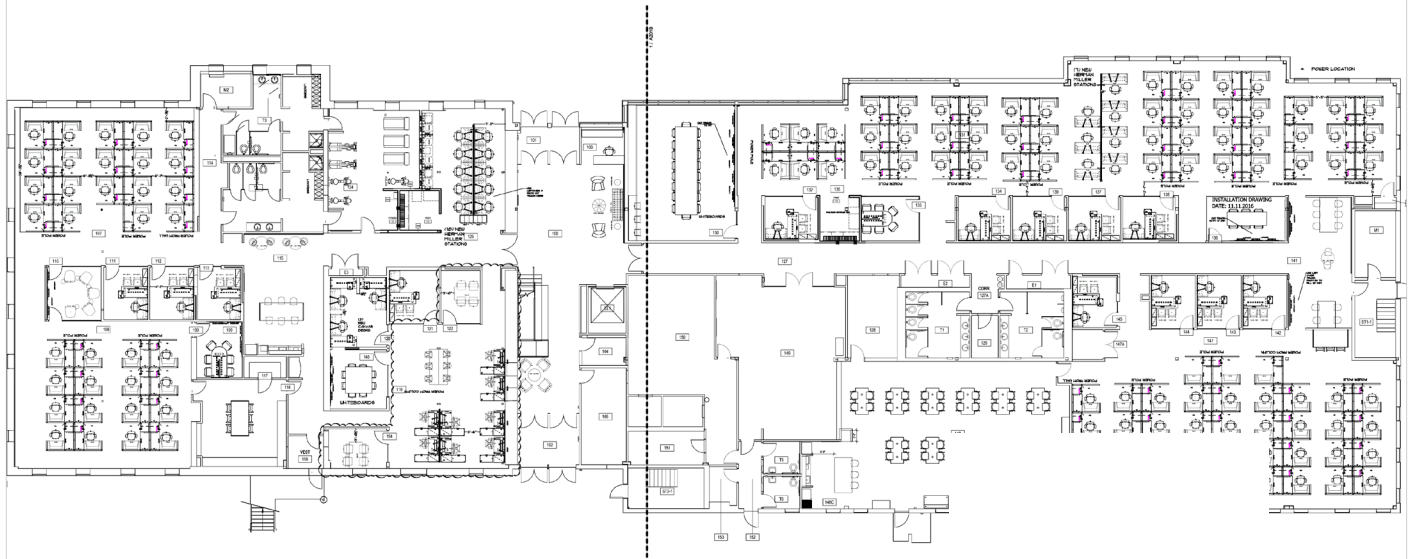
Property Overview

Owner	Darling Avenue Realty, LLC
Available Space	58,902± SF
Building Size	60,032± SF
Lot Size	3.72± acres
Assessor's Reference	Map 48, Lot 13A
Deed Reference	Book 32242, Page 35
Zoning	CCR
Year Built	1984
Construction	Steel frame, brick
Roof	Flat
Utilities	Municipal water and sewer
HVAC	Oil-fired, forced hot air
Sprinkler	Wet system
Parking	Ample on-site

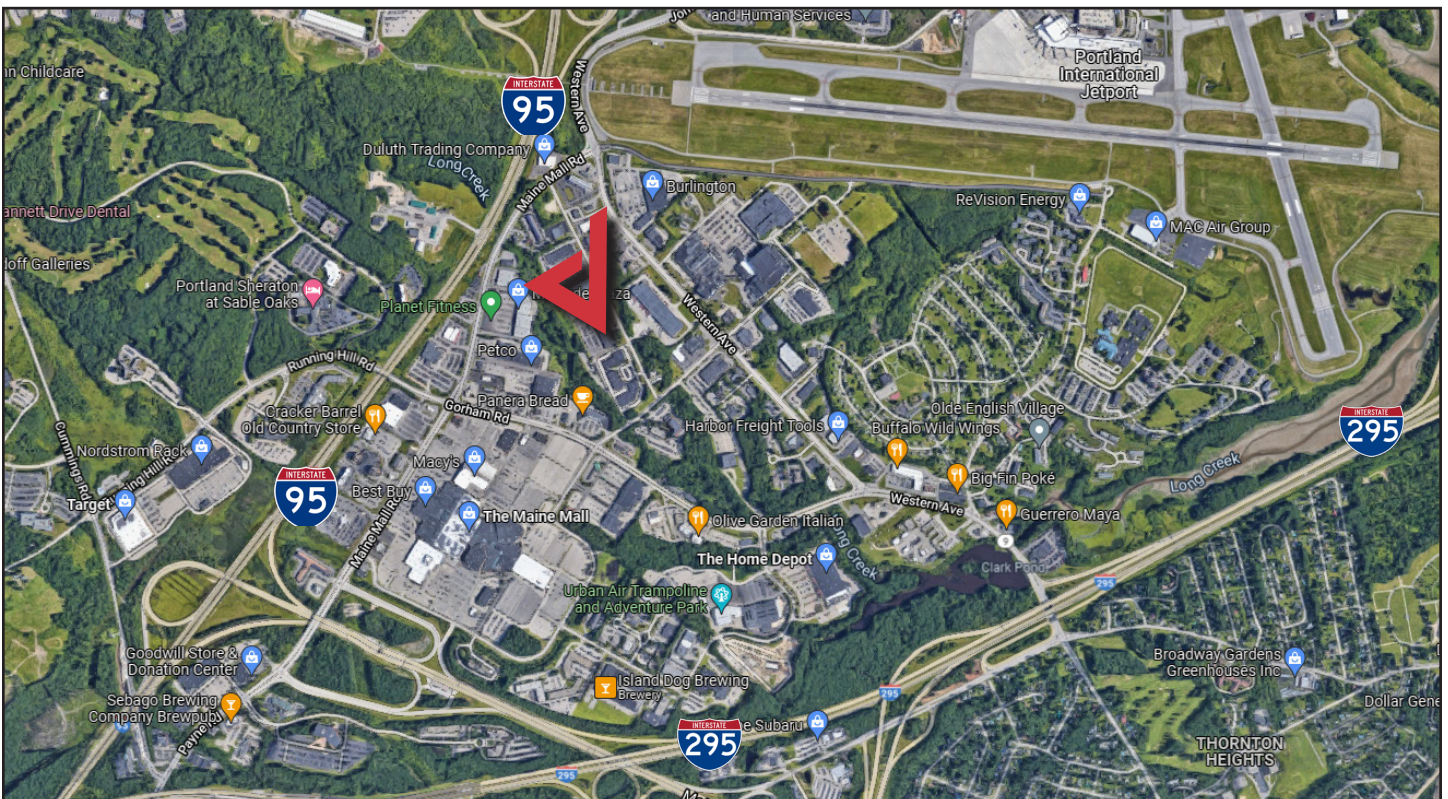
FOR SUBLEASE : \$12.00/SF NNN - Estimated NNN's : \$3.87/SF



123 Darling Avenue



123 DARLING AVE
SOUTH PORTLAND, MAINE
FLOOR 1



The information contained herein has been given to us by the owner of the property or other sources we deem reliable. We have no reason to doubt its accuracy, but we do not guarantee it. All information should be verified prior to purchase or lease.